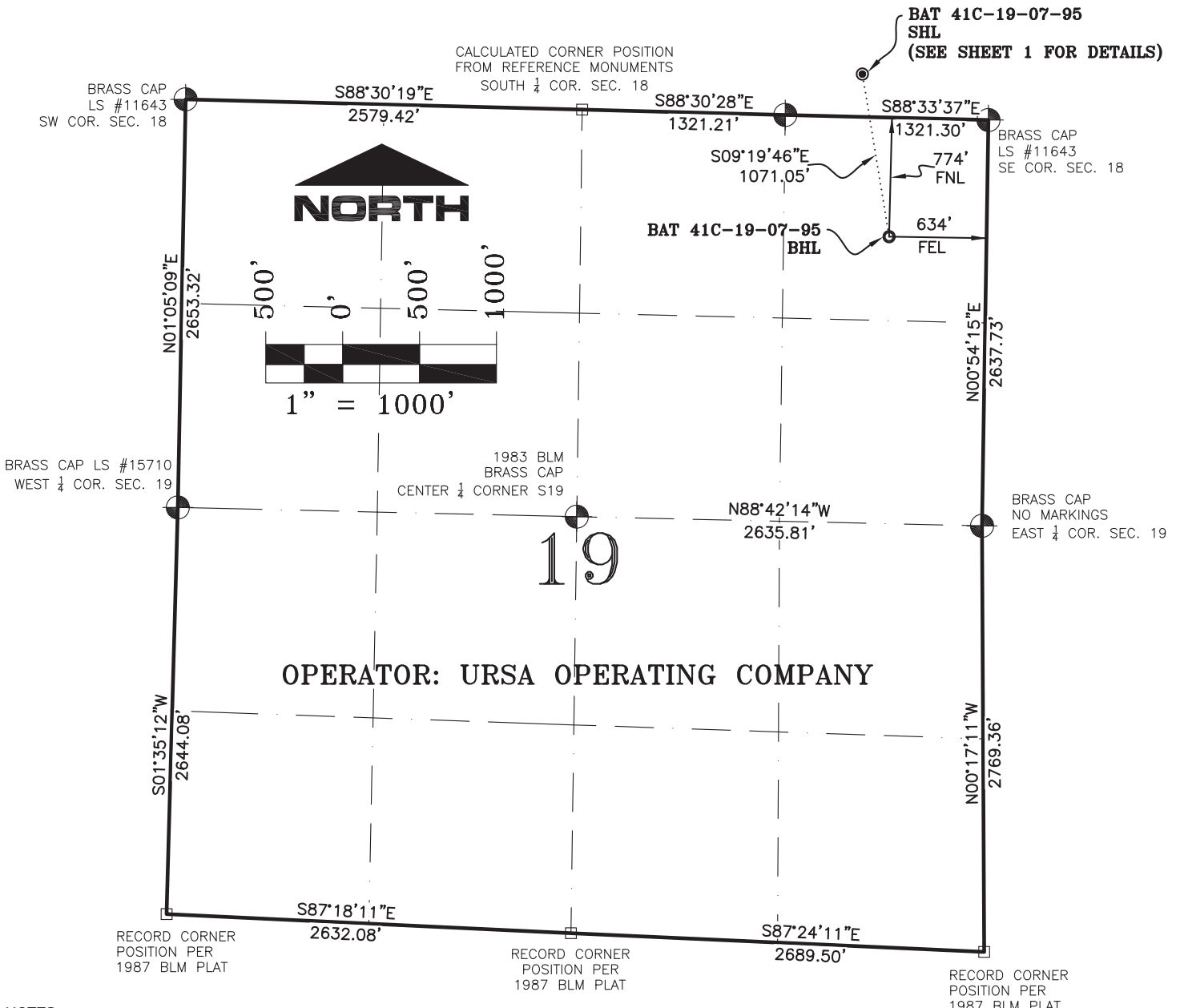


SECTION 19, T7S, R95W, 6th P.M.



NOTES:

1. GEODETIC POSITIONS ARE SHOWN IN DECIMAL DEGREES.
2. UNITS OF LINEAR MEASUREMENT: U.S. SURVEY FOOT
3. ELEVATIONS ARE BASED ON GPS OBSERVATIONS USING GEOID 03, NAVD88.
4. ALL SURFACE (SHL) AND BOTTOM (BHL) HOLE LOCATIONS ARE MEASURED AT 90° ANGLES FROM SECTION LINES.
5. BASIS OF BEARING: N00°52'49"E BETWEEN FOUND MONUMENTS AS SHOWN ON SHEET 1.
6. EXISTING GROUND ELEVATION: 5441'. PROPOSED PAD ELEVATION: 5441.2'.
7. GPS OPERATOR: KYLE TESKY OBSERVED AN AVERAGE PDOP OF ≤ 3.0 FOR ALL SURVEY MEASUREMENTS DEPICTED ON THIS AND SUBSEQUENT SHEETS. ALL GPS OBSERVATIONS ARE IN COMPLIANCE WITH COGCC RULE NO. 215
8. SURFACE USE: AGRICULTURAL LANDS
9. USGS QUAD MAP: PARACHUTE

SURVEYORS STATEMENT:

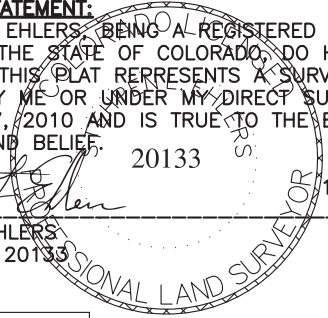
I, STEPHEN L. EHLERS, BEING A REGISTERED LAND SURVEYOR IN THE STATE OF COLORADO, DO HEREBY CERTIFY THAT THIS PLAT REPRESENTS A SURVEY PERFORMED BY ME OR UNDER MY DIRECT SUPERVISION SEPTEMBER 17, 2010 AND IS TRUE TO THE BEST OF MY KNOWLEDGE AND BELIEF.

20133

16 JULY, 2013

STEPHEN L. EHLERS
 COLORADO LS 20133

DATE

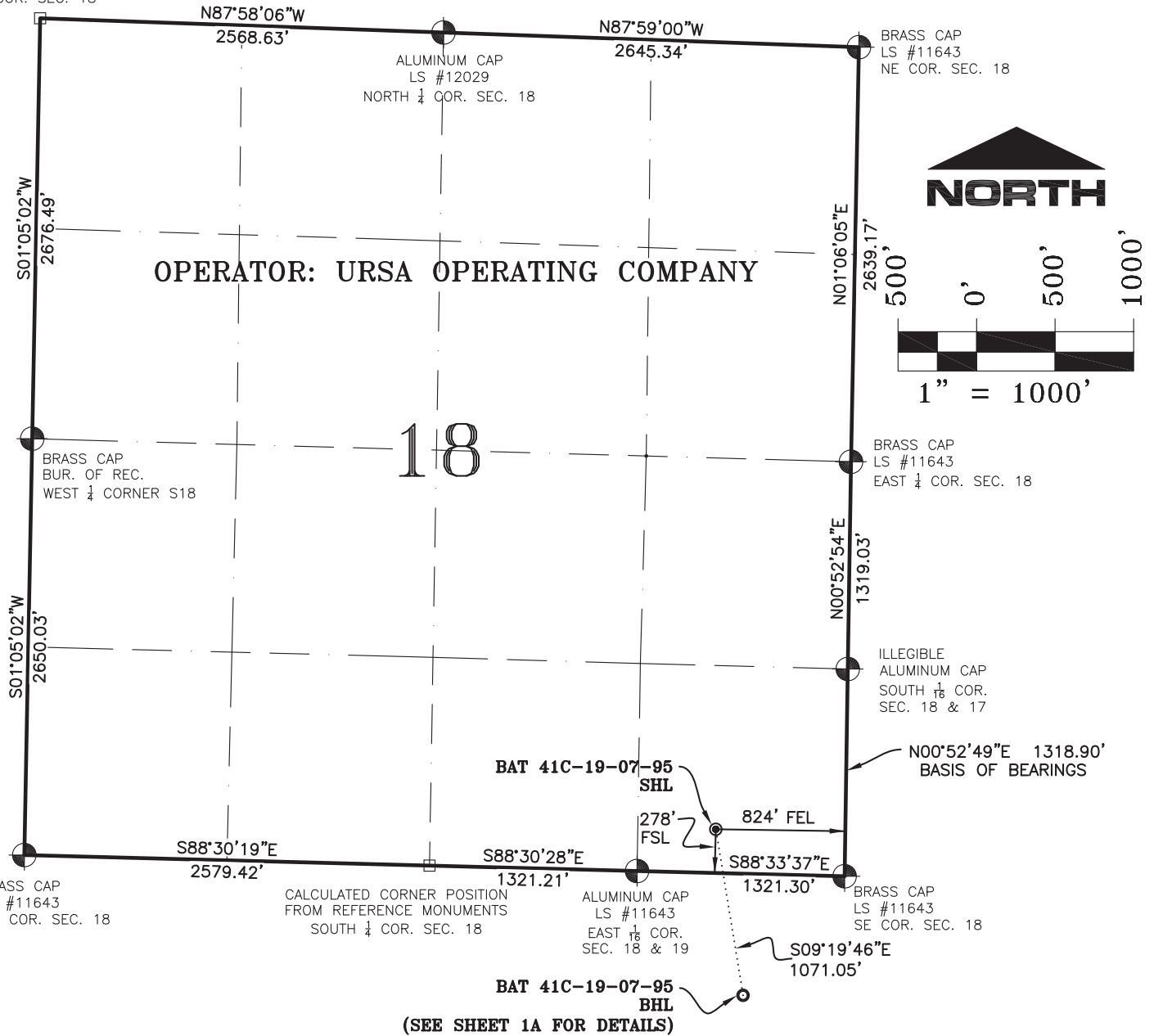


WELL No.	SECTION LINES TIES		NAD 83		NAD 27	
	FOOTAGES	FOOTAGES	LATITUDE	LONGITUDE	LATITUDE	LONGITUDE
BAT 41C-18-07-95	278' FSL	824' FEL	39.431188°	-108.033247°	39.431210°	-108.032618°
SURFACE HOLE (SHL)	278' FSL	824' FEL	39.431188°	-108.033247°	39.431210°	-108.032618°
BOTTOM HOLE (BHL)	774' FNL	634' FEL	39.428302°	-108.032529°	39.428324°	-108.031899°

	<p>118 West Sixth Street, Suite 200 Glenwood Springs, CO 81601 970.945.1004 www.sgm-inc.com</p>	Scale: 1" = 1000'	WELL LOCATION PLAT - URSA BAT 41C-19-07-95			
		Sheet 1A of 1A	BHL LOCATED IN NE1/4NE1/4 SECTION 19, T. 7 S., R 95 W., 6TH P.M., GARFIELD COUNTY, CO			
WLP		Job# 2013-413.001	Date: 7.15.13	By: REB	File: MonRidUrsa	

SECTION 18, T7S, R95W, 6th P.M.

CALCULATED POSITION
NW COR. SEC. 18



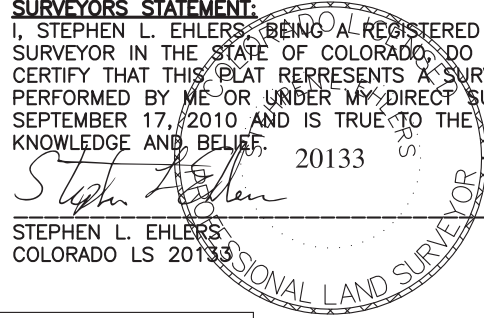
NOTES:

1. GEODETIC POSITIONS ARE SHOWN IN DECIMAL DEGREES.
2. UNITS OF LINEAR MEASUREMENT: U.S. SURVEY FOOT
3. ELEVATIONS ARE BASED ON GPS OBSERVATIONS USING GEOID 03, NAVD88.
4. ALL SURFACE (SHL) AND BOTTOM (BHL) HOLE LOCATIONS ARE MEASURED AT 90° ANGLES FROM SECTION LINES.
5. BASIS OF BEARING: N00°52'49"E BETWEEN FOUND MONUMENTS AS SHOWN HEREON.
6. EXISTING GROUND ELEVATION: 5441'. PROPOSED PAD ELEVATION: 5441.2'.
7. GPS OPERATOR: KYLE TESKY OBSERVED AN AVERAGE PDOP OF ≤ 3.0 FOR ALL SURVEY MEASUREMENTS DEPICTED ON THIS AND SUBSEQUENT SHEETS. ALL GPS OBSERVATIONS ARE IN COMPLIANCE WITH COGCC RULE NO. 215
8. SURFACE USE: AGRICULTURAL LANDS
9. USGS QUAD MAP: PARACHUTE

SURVEYORS STATEMENT:

I, STEPHEN L. EHLERS, BEING A REGISTERED LAND SURVEYOR IN THE STATE OF COLORADO, DO HEREBY CERTIFY THAT THIS PLAT REPRESENTS A SURVEY PERFORMED BY ME OR UNDER MY DIRECT SUPERVISION SEPTEMBER 17, 2010 AND IS TRUE TO THE BEST OF MY KNOWLEDGE AND BELIEF.

Stephen L. Ehlers 20133
 16 JULY, 2013
 STEPHEN L. EHLERS DATE
 COLORADO LS 20133



WELL No.	SECTION LINES TIES		NAD 83		NAD 27	
BAT 41C-18-07-95	FOOTAGES	FOOTAGES	LATITUDE	LONGITUDE	LATITUDE	LONGITUDE
SURFACE HOLE (SHL)	278' FSL	824' FEL	39.431188°	-108.033247°	39.431210°	-108.032618°
BOTTOM HOLE (BHL)	774' FNL	634' FEL	39.428302°	-108.032529°	39.428324°	-108.031899°

	<p>118 West Sixth Street, Suite 200 Glenwood Springs, CO 81601 970.945.1004 www.sgm-inc.com</p>	Scale: 1" = 1000'	WELL LOCATION PLAT - URSA BAT 41C-19-07-95		
		Sheet 1 of 1A	SHL LOCATED IN SE1/4SE1/4 SECTION 18, T. 7 S., R 95 W., 6TH P.M., GARFIELD COUNTY, CO		
WLP		Job# 2013-413.001	Date: 7.15.13	By: REB	File: MonRidUrsa