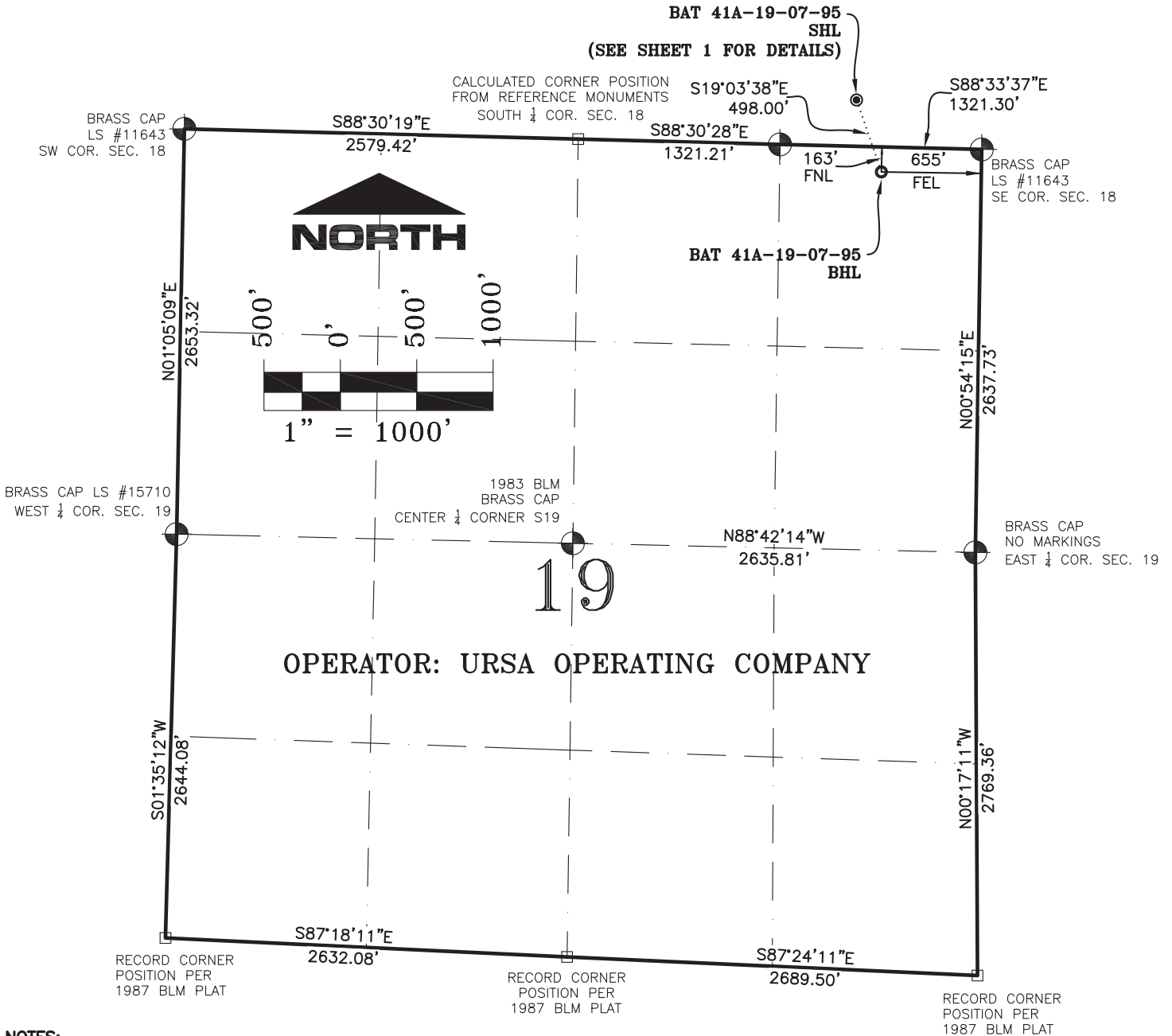


SECTION 19, T7S, R95W, 6th P.M.

BAT 41A-19-07-95
SHL
(SEE SHEET 1 FOR DETAILS)

CALCULATED CORNER POSITION
FROM REFERENCE MONUMENTS
SOUTH 1/4 COR. SEC. 18



OPERATOR: URSA OPERATING COMPANY

NOTES:

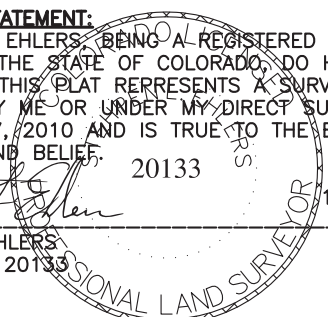
1. GEODETIC POSITIONS ARE SHOWN IN DECIMAL DEGREES.
2. UNITS OF LINEAR MEASUREMENT: U.S. SURVEY FOOT
3. ELEVATIONS ARE BASED ON GPS OBSERVATIONS USING GEOID 03, NAVD88.
4. ALL SURFACE (SHL) AND BOTTOM (BHL) HOLE LOCATIONS ARE MEASURED AT 90° ANGLES FROM SECTION LINES.
5. BASIS OF BEARING: N00°52'49"E BETWEEN FOUND MONUMENTS AS SHOWN ON SHEET 1.
6. EXISTING GROUND ELEVATION: 5441'. PROPOSED PAD ELEVATION: 5441.2'.
7. GPS OPERATOR: KYLE TESKY OBSERVED AN AVERAGE PDOP OF ≤ 3.0 FOR ALL SURVEY MEASUREMENTS DEPICTED ON THIS AND SUBSEQUENT SHEETS. ALL GPS OBSERVATIONS ARE IN COMPLIANCE WITH COGCC RULE NO. 215
8. SURFACE USE: AGRICULTURAL LANDS
9. USGS QUAD MAP: PARACHUTE

SURVEYORS STATEMENT:

I, STEPHEN L. EHLERS, BEING A REGISTERED LAND SURVEYOR IN THE STATE OF COLORADO, DO HEREBY CERTIFY THAT THIS PLAT REPRESENTS A SURVEY PERFORMED BY ME OR UNDER MY DIRECT SUPERVISION SEPTEMBER 17, 2010 AND IS TRUE TO THE BEST OF MY KNOWLEDGE AND BELIEF.

20133
16 JULY, 2013
DATE

STEPHEN L. EHLERS
COLORADO LS 20133

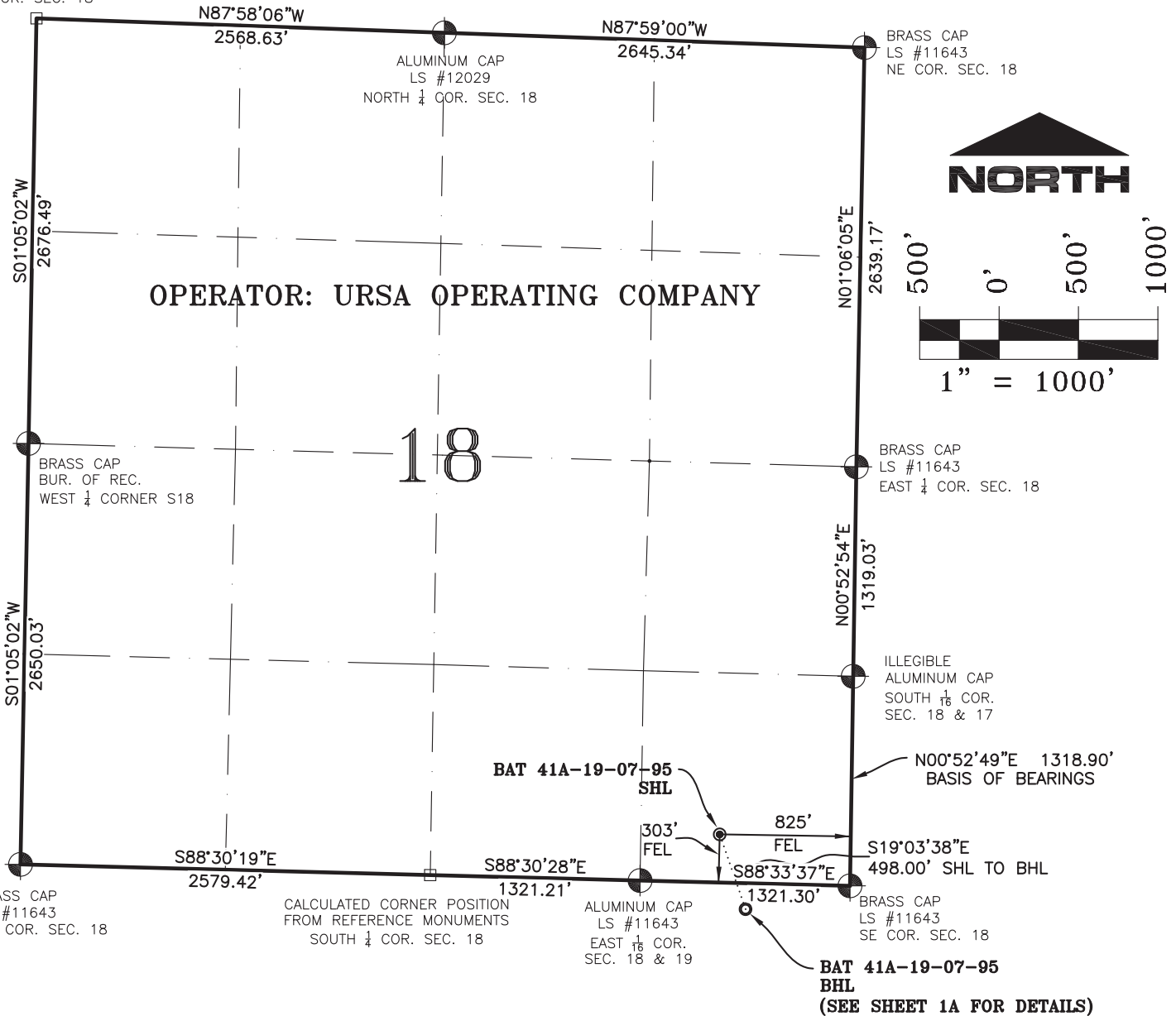


WELL No.	SECTION LINES TIES		NAD 83		NAD 27	
	FOOTAGES	FOOTAGES	LATITUDE	LONGITUDE	LATITUDE	LONGITUDE
BAT 41A-18-07-95	303' FSL	825' FEL	39.431257°	-108.033250°	39.431279°	-108.032620°
SURFACE HOLE (SHL)	163' FNL	665' FEL	39.429978°	-108.032628°	39.430000°	-108.031998°
BOTTOM HOLE (BHL)						

	<p>118 West Sixth Street, Suite 200 Glenwood Springs, CO 81601 970.945.1004 www.sgm-inc.com</p>	Scale: 1" = 1000'	WELL LOCATION PLAT - URSA BAT 41A-19-07-95			
		Sheet 1A of 1A	BHL LOCATED IN NE1/4NE1/4 SECTION 19, T. 7 S., R. 95 W., 6TH P.M., GARFIELD COUNTY, CO			
WLP		Job# 2013-413.001	Date: 7.15.13	By: REB	File: MonRidUrsa	

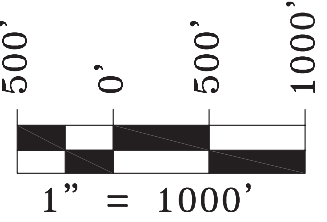
SECTION 18, T7S, R95W, 6th P.M.

CALCULATED POSITION
NW COR. SEC. 18



OPERATOR: URSA OPERATING COMPANY

18



NOTES:

1. GEODETIC POSITIONS ARE SHOWN IN DECIMAL DEGREES.
2. UNITS OF LINEAR MEASUREMENT: U.S. SURVEY FOOT
3. ELEVATIONS ARE BASED ON GPS OBSERVATIONS USING GEOID 03, NAVD88.
4. ALL SURFACE (SHL) AND BOTTOM (BHL) HOLE LOCATIONS ARE MEASURED AT 90° ANGLES FROM SECTION LINES.
5. BASIS OF BEARING: N00°52'49"E BETWEEN FOUND MONUMENTS AS SHOWN HEREON.
6. EXISTING GROUND ELEVATION: 5441'. PROPOSED PAD ELEVATION: 5441.2'.
7. GPS OPERATOR: KYLE TESKY OBSERVED AN AVERAGE PDOP OF ≤ 3.0 FOR ALL SURVEY MEASUREMENTS DEPICTED ON THIS AND SUBSEQUENT SHEETS. ALL GPS OBSERVATIONS ARE IN COMPLIANCE WITH COGCC RULE NO. 215
8. SURFACE USE: AGRICULTURAL LANDS
9. USGS QUAD MAP: PARACHUTE

SURVEYORS STATEMENT:

I, STEPHEN L. EHLERS, BEING A REGISTERED LAND SURVEYOR IN THE STATE OF COLORADO, DO HEREBY CERTIFY THAT THIS PLAT REPRESENTS A SURVEY PERFORMED BY ME OR UNDER MY DIRECT SUPERVISION SEPTEMBER 17, 2010 AND IS TRUE TO THE BEST OF MY KNOWLEDGE AND BELIEF.

20133
16 JULY, 2013
DATE

STEPHEN L. EHLERS
COLORADO LS 20133

**BAT 41A-19-07-95
BHL
(SEE SHEET 1A FOR DETAILS)**

WELL No.	SECTION LINES TIES		NAD 83		NAD 27	
BAT 41A-18-07-95	FOOTAGES	FOOTAGES	LATITUDE	LONGITUDE	LATITUDE	LONGITUDE
SURFACE HOLE (SHL)	303' FSL	825' FEL	39.431257°	-108.033250°	39.431279°	-108.032620°
BOTTOM HOLE (BHL)	163' FNL	665' FEL	39.429978°	-108.032628°	39.430000°	-108.031998°

Ursa

118 West Sixth Street, Suite 200
 Glenwood Springs, CO 81601
 970.945.1004 www.sgm-inc.com

Scale: 1" = 1000'

Sheet 1 of 1A

WLP

WELL LOCATION PLAT - URSA BAT 41A-19-07-95
SHL LOCATED IN SE1/4SE1/4 SECTION 18, T. 7 S., R 95 W., 6TH P.M., GARFIELD COUNTY, CO

Job# 2013-413.001

Date: 7.15.13

By: REB

File: MonRidUrsa