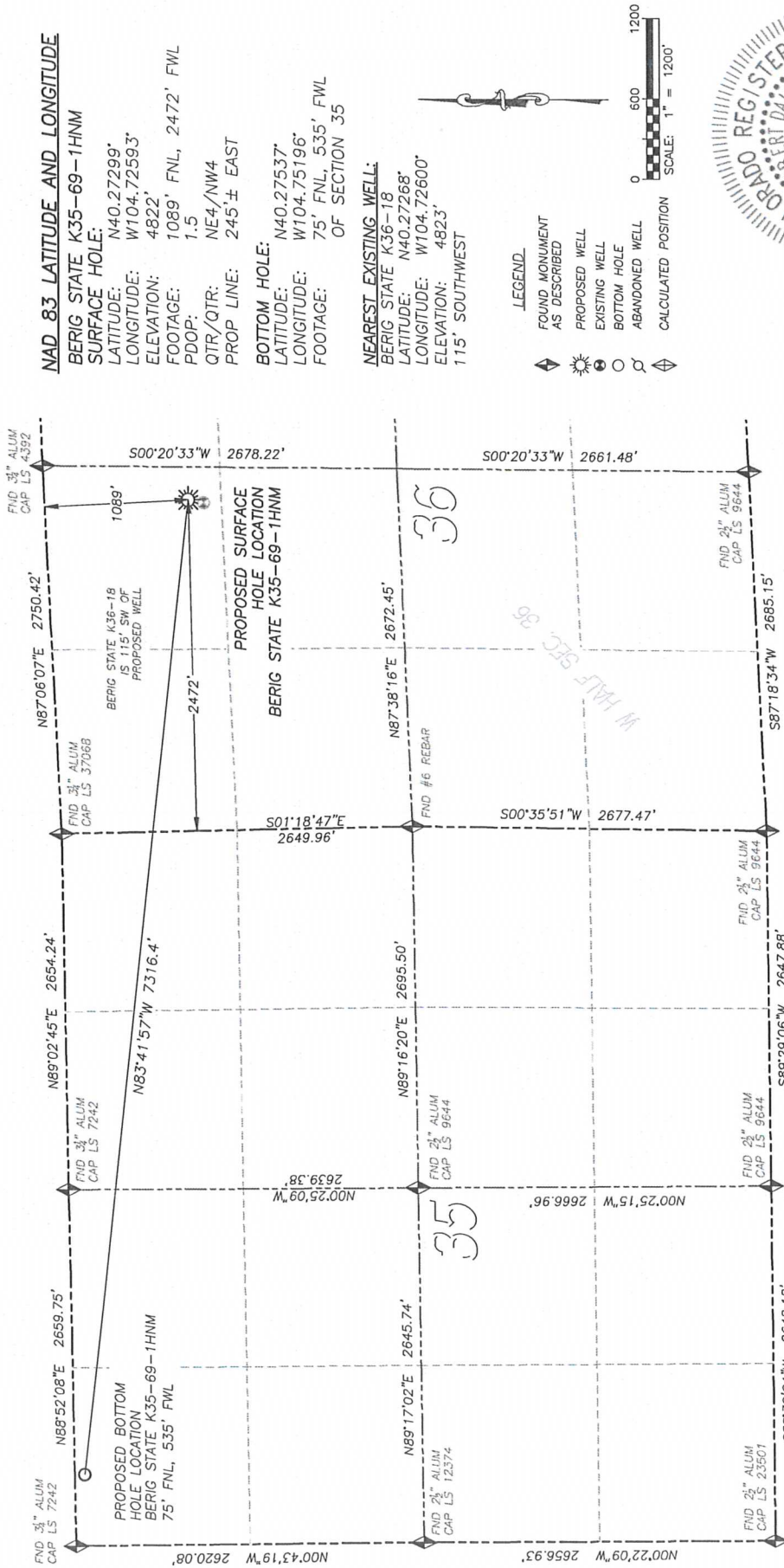


DALEY LAND SURVEYING, INC. PARKER, CO. 80134 303 953 9841

WELL LOCATION CERTIFICATE - BERIG STATE K35-69-1HNM

SECTION 36, TOWNSHIP 4 NORTH, RANGE 66 WEST OF THE 6TH PRINCIPAL MERIDIAN



IN ACCORDANCE WITH A REQUEST FROM MATT VERBIT OF NOBLE ENERGY INC., DALEY LAND SURVEYING, INC. HAS DETERMINED THE SURFACE LOCATION OF THE BERIG STATE K35-69-1HNM WELL TO BE 1089' FNL, 2472' FWL, AS MEASURED AT NINETY (90) DEGREES FROM THE SECTION LINES OF SECTION 36, TOWNSHIP 4 NORTH, RANGE 66 WEST OF THE 6TH PRINCIPAL MERIDIAN, WELD COUNTY, COLORADO. THE BOTTOM HOLE LOCATION, PROVIDED BY THE CLIENT, IS TO BE 75' FNL, 535' FWL OF SECTION 35, T.4N., R.66W.

I HEREBY CERTIFY THAT THIS WELL LOCATION CERTIFICATE WAS PREPARED BY ME OR UNDER MY DIRECT SUPERVISION, THAT THE WORK WAS COMPLETED ON 4/2/2012 FOR AND ON BEHALF OF NOBLE ENERGY, INC., AND THAT THIS MAP DOES NOT REPRESENT A BOUNDARY SURVEY, IT IS NOT A LAND SURVEY PLAT OR AN IMPROVEMENT SURVEY PLAT AND IT IS NOT TO BE RELIED UPON FOR THE ESTABLISHMENT OF FENCE, BUILDING OR OTHER FUTURE IMPROVEMENT LINES.

- NOTES:
- 1) BEARINGS FOR THIS MAP ARE ASSUMED AND BASED UPON GPS OBSERVATIONS MADE BETWEEN MONUMENTS LOCATED AT THE NORTHWEST CORNER AND NORTH QUARTER CORNER OF SECTION 36, T.4N., R.66W.
 - 2) HORIZONTAL DATUM IS NAD83.
 - 3) VERTICAL DATUM IS NAVD83 AND ORIGINATES FROM THE LOCAL C.O.R.S. NETWORK, UTILIZING THE GEOID09 MODEL.
 - 4) SEE LOCATION DRAWING FOR VISIBLE IMPROVEMENTS WITHIN 400' OF PROPOSED DISTURBED AREA.
 - 5) SURFACE USE: AGRICULTURAL.

- LEGEND:
- FOUND MONUMENT AS DESCRIBED
 - PROPOSED WELL
 - EXISTING WELL
 - BOTTOM HOLE
 - ABANDONED WELL
 - CALCULATED POSITION



FOR AND ON BEHALF OF
DALEY LAND SURVEYING INC.,
Robert Daley, PLS 35597

NOTICE: According to Colorado law you MUST commence any legal action based upon any defect in this W.L.C. within three years after you first discover such defect. In no event may any action based upon any such defect in this W.L.C. be commenced more than ten years from the date of the certification shown herein.

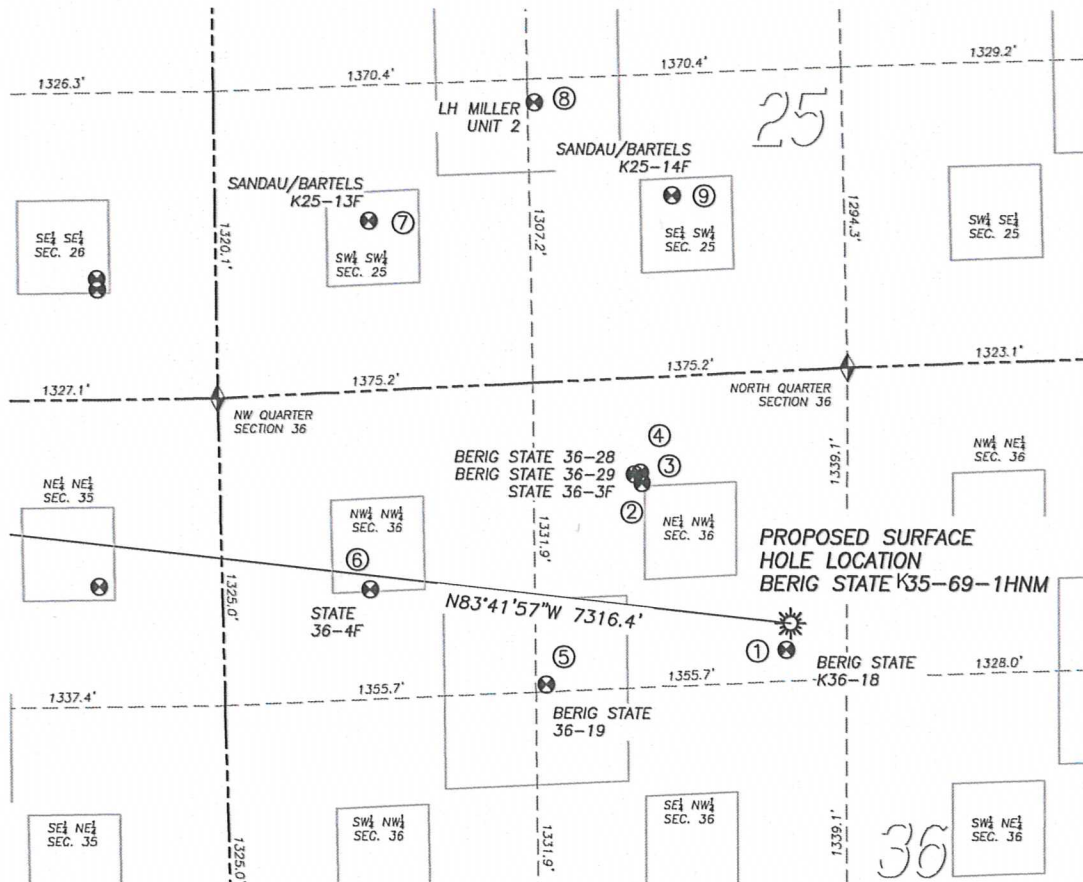
DALEY LAND SURVEYING, INC.

PARKER, CO. 80134

303 953 9841

SITE SKETCH BERIG STATE K35-69-1HNM

SECTION 36, TOWNSHIP 4 NORTH, RANGE 66 WEST OF THE 6TH PRINCIPAL MERIDIAN



	Well Name	Qtr - Qtr	Footage		Latitude	Longitude	Elevation	PDOP
1	BERIG STATE K36-18	NE NW 36	1201' FNL	2451' FWL	40.27268	-104.72600	4823	1.8
2	STATE 36-3F	NE NW 36	454' FNL	1841' FWL	40.27466	-104.72822	4812	1.5
3	BERIG STATE 36-29	NE NW 36	415' FNL	1810' FWL	40.27476	-104.72833	4811	1.5
4	BERIG STATE 36-28	NE NW 36	407' FNL	1833' FWL	40.27479	-104.72825	4811	1.5
5	BERIG STATE K36-19	NE NW 36	1300' FNL	1401' FWL	40.27229	-104.72975	4815	1.3
6	STATE 36-4F	NW NW 36	855' FNL	643' FWL	40.27342	-104.73249	4810	1.4
7	SANDAU/BARTELS 25-13F	SW SW 25	730' FSL	670' FWL	40.27778	-104.73245	4796	1.4
8	LH MILLER UNIT 2	SE SW 25	1205' FSL	1399' FWL	40.27917	-104.72984	4797	1.3
9	SANDAU/BARTELS 25-14F	SE SW 25	777' FSL	1996' FWL	40.27806	-104.7277	4802	1.3

NOTES:

1. THIS DOES NOT REPRESENT A BOUNDARY SURVEY
2. HORIZONTAL DATUM IS NAD83
3. VERTICAL DATUM IS NAVD88 AND ORIGINATES FROM THE LOCAL C.O.R.S. NETWORK, UTILIZING THE GEOID09 MODEL.



0 800
SCALE: 1" = 800'

LEGEND

- FOUND MONUMENT AS DESCRIBED
- PROPOSED WELL
- EXISTING WELL
- BOTTOM HOLE
- ABANDONED WELL
- CALCULATED POSITION

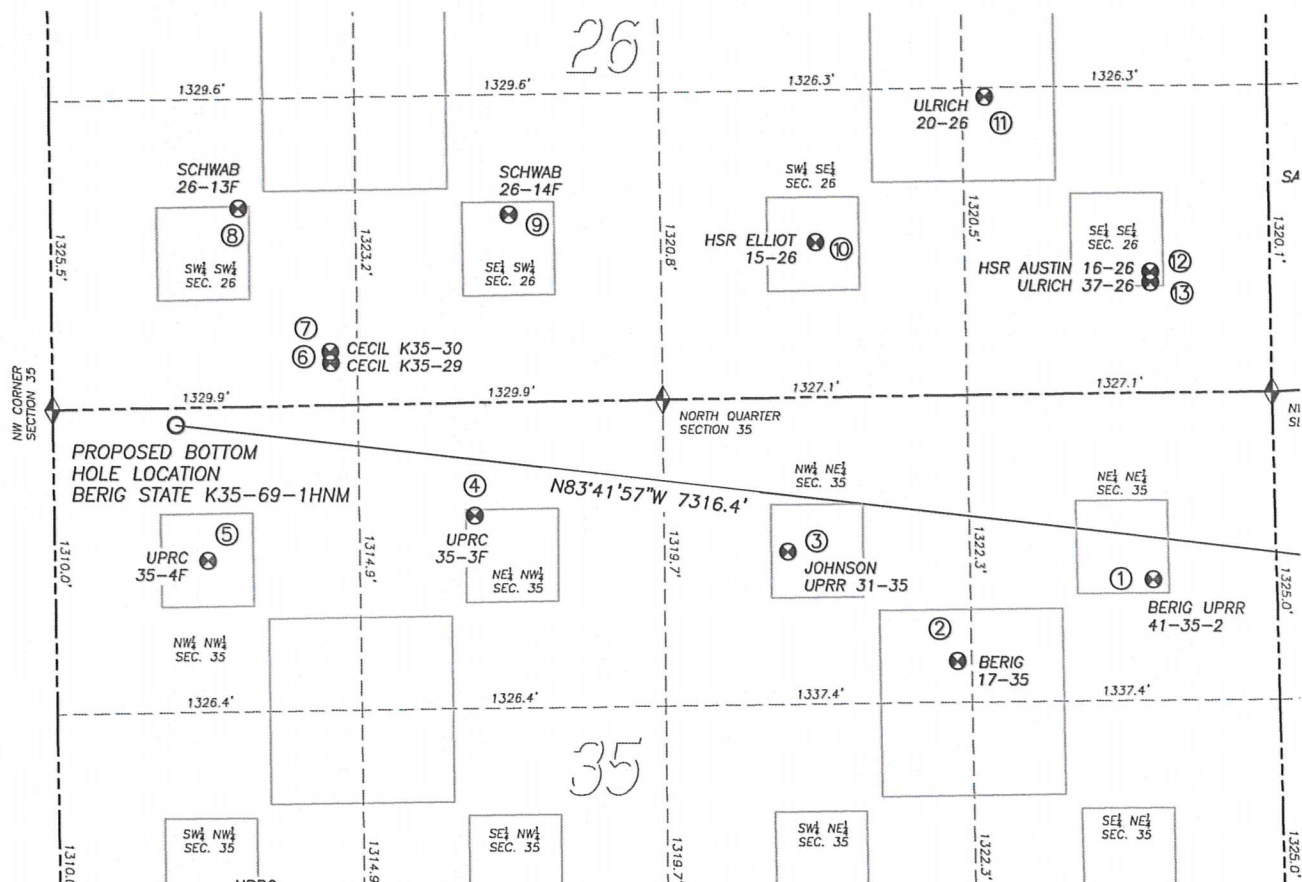
DALEY LAND SURVEYING, INC.

PARKER, CO. 80134

303 953 9841

SITE SKETCH BERIG STATE K35-69-1HNM

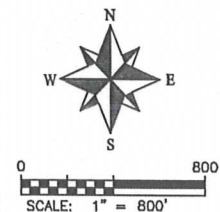
SECTION 36, TOWNSHIP 4 NORTH, RANGE 66 WEST OF THE 6TH PRINCIPAL MERIDIAN



	Well Name	Qtr - Qtr	Footage		Latitude	Longitude	Elevation	PDOP
1	BERIG UPRR 41-35 -2	NE NE 35	805' FNL	535' FEL	40.27348	-104.73671	4802	1.5
2	BERIG 17-35	NW NE 35	1146' FNL	1398' FEL	40.27252	-104.73979	4806	1.8
3	JOHNSON UPRR 31-35	NW NE 35	663' FNL	2128' FEL	40.27383	-104.74243	4800	1.6
4	UPRC 35-3F	NE NW 35	486' FNL	1831' FWL	40.27428	-104.74731	4793	1.3
5	UPRC 35-4F	NW NW 35	660' FNL	668' FWL	40.27377	-104.75147	4785	1.2
6	CECIL K35-29	SW SW 26	182' FSL	1211' FWL	40.27609	-104.74954	4781	1.3
7	CECIL K35-30	SW SW 26	230' FSL	1210' FWL	40.27622	-104.74954	4780	1.3
8	SCHWAB 26-13F	SW SW 26	852' FSL	819' FWL	40.27792	-104.75095	4777	1.3
9	SCHWAB 26-14F	SE SW 26	806' FSL	1996' FWL	40.27783	-104.74673	4779	1.3
10	HSR-ELLIOT 15-26	SW SE 26	665' FSL	1979' FEL	40.27748	-104.74194	4790	1.6
11	ULRICH 20-26	SE SE 26	1281' FSL	1230' FEL	40.27918	-104.73926	4783	1.5
12	HRS AUSTIN 16-26	SE SE 26	520' FSL	518' FEL	40.27711	-104.7367	4792	1.5
13	ULRICH 37-26	SE SE 26	474' FSL	517' FEL	40.27698	-104.7367	4792	1.5

NOTES:

1. THIS DOES NOT REPRESENT A BOUNDARY SURVEY
2. HORIZONTAL DATUM IS NAD83
3. VERTICAL DATUM IS NAVD88 AND ORIGINATES FROM THE LOCAL C.O.R.S. NETWORK, UTILIZING THE GEOID09 MODEL



LEGEND

- ◆ FOUND MONUMENT AS DESCRIBED
- ⊙ PROPOSED WELL
- ⊙ EXISTING WELL
- BOTTOM HOLE
- ⊙ ABANDONED WELL
- ◆ CALCULATED POSITION