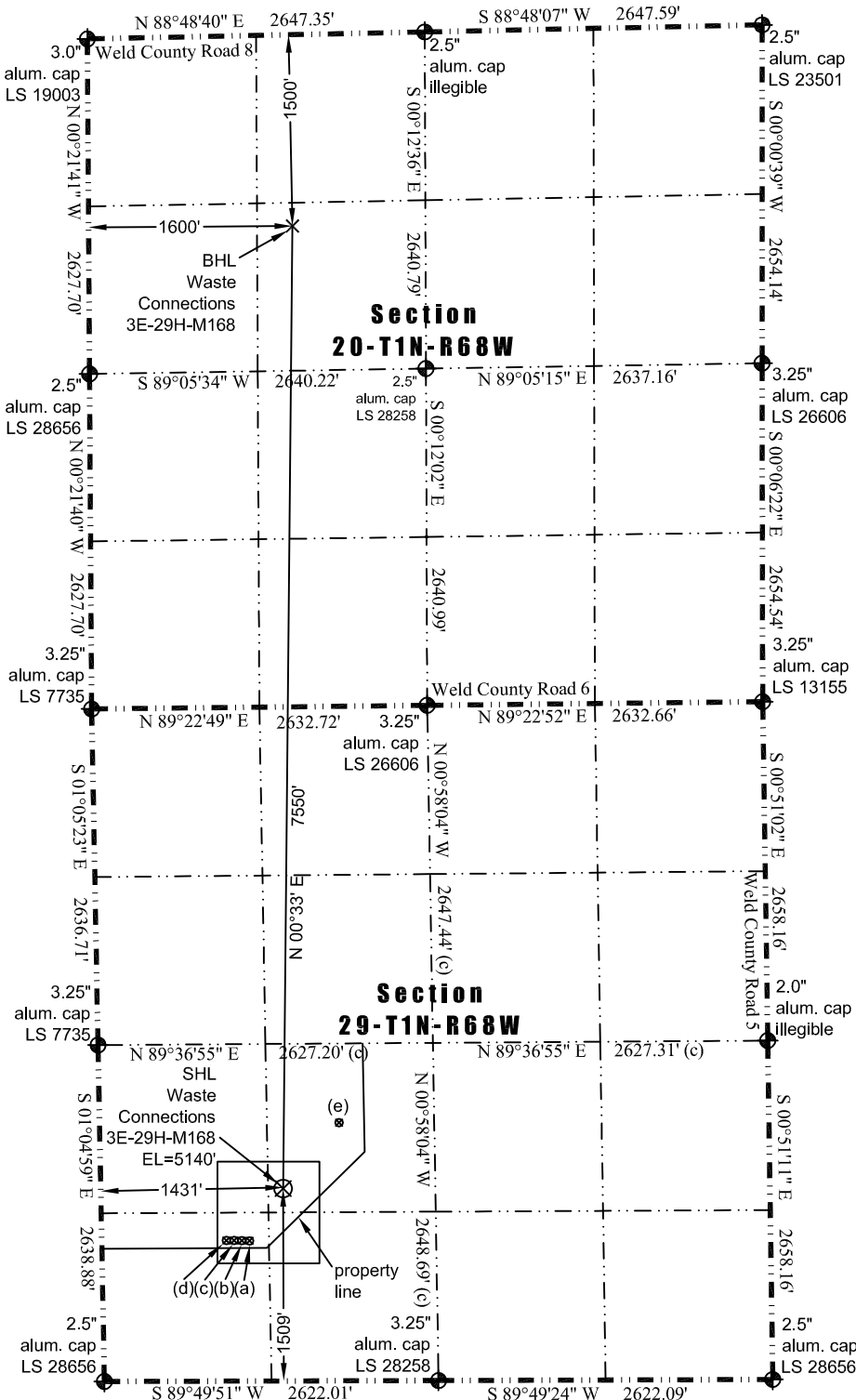


JR Land Surveying, LLC

8114 Northstar Drive
Windsor, Colorado 80528
P. 970-576-4641

WELL LOCATION CERTIFICATE

THIS MAP DOES NOT REPRESENT A BOUNDARY SURVEY



(a) Existing Well Data:
SRC Pratt 24-29D
Latitude: N 40.01778°
Longitude: W 105.03275°
FSL: 1099'
FWL: 1160'
ELEV: 5142'
PDOP: 1.9

(b) Existing Well Data:
Pratt #2
Latitude: N 40.01778°
Longitude: W 105.03282°
FSL: 1100'
FWL: 1141'
ELEV: 5142'
PDOP: 1.9

(c) Existing Well Data:
SRC Pratt 13-29D
Latitude: N 40.01778°
Longitude: W 105.03288°
FSL: 1100'
FWL: 1122'
ELEV: 5141'
PDOP: 2.1

(d) Existing Well Data:
SRC Pratt 14-29D
Latitude: N 40.01778°
Longitude: W 105.03296°
FSL: 1100'
FWL: 1102'
ELEV: 5141'
PDOP: 2.1

(e) Existing Well Data:
Pratt #1
Latitude: N 40.02032°
Longitude: W 105.03023°
FSL: 2025'
FWL: 1879'
ELEV: 5148'
PDOP: 2.2

Nearest:
Building: 1,662' southwest
Above Ground Utility: 3,957' northeast
Public Road: 1,477' southwest
Railroad: 9,777' northwest
Property Line: 242' southeast
Well Window: SHL is 213' inside
Existing Well: SRC Pratt 24-29D,
487' southwest

Proposed Surface Hole Data:
Latitude: N 40.01890° (BHL: 40.03963°)
Longitude: W 105.03180° (BHL: 105.03140°)
PDOP: 2.2

I hereby certify that this Well Location Certificate was prepared by me or under my direct supervision on 4/4/2013 for and on behalf of EnCana Oil & Gas (USA) Inc. That it is not a Land Survey Plat or an Improvement Survey Plat and that it is not to be relied upon for establishment of fences, buildings, or other future improvement lines.

John Robert McGhee LS#38215
Well: Waste Connections 3E-29H-M168 WLC.

Notes:

- 1) Bearings and distances based on NAD 83 Colorado North State Plane Coordinate.
- 2) Conversion factor to ground (1.0002793972).
- 3) Elevations based on NAVD 88 GPS heights and Geoid 2003 corrections.
- 4) See Location Drawing for visible improvements within 500 feet of Pad Site.
- 5) The surface use is a uncultivated field.

NOTICE: According to Colorado law you must commence any legal action based upon any defect in this W.L.C. within three years after you first discover such defect. In no event may any action based upon any defect in this W.L.C. be commenced more than ten years from this said date of the certification shown hereon.

