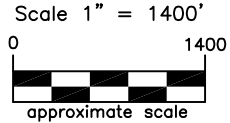
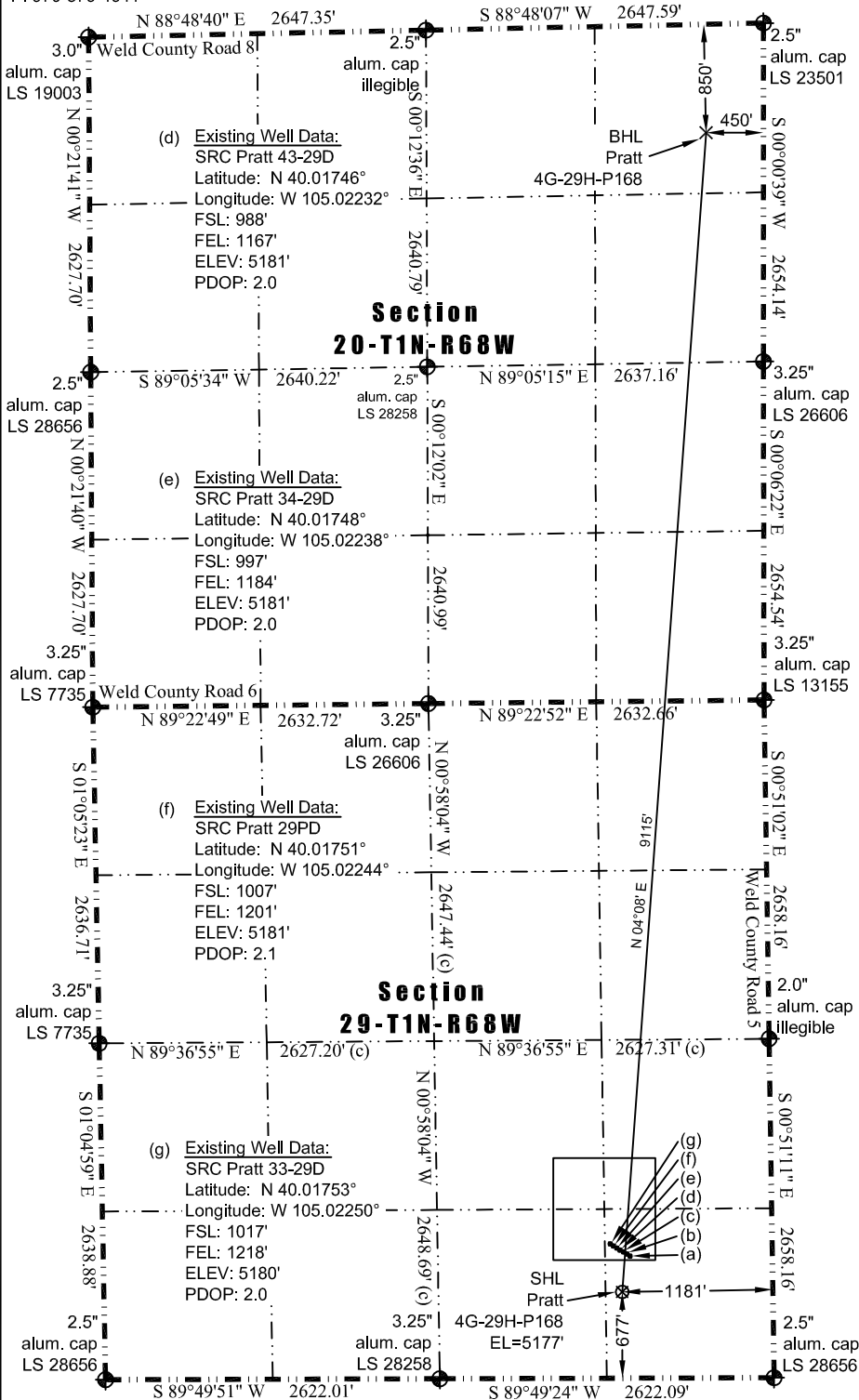


JR Land Surveying, LLC

8114 Northstar Drive
Windsor, Colorado 80528
P. 970-576-4641

WELL LOCATION CERTIFICATE

THIS MAP DOES NOT REPRESENT A BOUNDARY SURVEY



- LEGEND**
- ◆ - found survey monument
 - (C) - calculated dimension

- (a) **Existing Well Data:**
SRC Pratt 29TD
Latitude: N 40.01737°
Longitude: W 105.02213°
FSL: 957'
FEL: 1116'
ELEV: 5181'
PDOP: 2.0
- (b) **Existing Well Data:**
SRC Pratt 29XD
Latitude: N 40.01740°
Longitude: W 105.02220°
FSL: 969'
FEL: 1134'
ELEV: 5181'
PDOP: 2.0
- (c) **Existing Well Data:**
Pratt 29-3
Latitude: N 40.01743°
Longitude: W 105.02227°
FSL: 980'
FEL: 1155'
ELEV: 5180'
PDOP: 2.0

Nearest:
Building: 774' south
Above Ground Utility: 4,653' north
Public Road: 1,171' east
Railroad: 11,796' northwest
Property Line: 677' south
Well Window: SHL is 249' outside
Existing Well: SRC Pratt 29TD,
288' northeast

Proposed Surface Hole Data:
Latitude: N 40.01660° (BHL: 40.04155°)
Longitude: W 105.02236° (BHL: 105.01983°)
PDOP: 1.8

Notes:

- 1) Bearings and distances based on NAD 83 Colorado North State Plane Coordinate.
- 2) using RTK GPS observations taken 2/20/13 by operator John Rice.
- 3) Conversion factor to ground (1.0002793972).
- 4) Elevations based on NAVD 88 GPS heights and Geoid 2003 corrections.
- 5) See Location Drawing for visible improvements within 500 feet of Pad Site.
- 6) The surface use is a uncultivated field.

NOTICE: According to Colorado law you must commence any legal action based upon any defect in this W.L.C. within three years after you first discover such defect. In no event may any action based upon any defect in this W.L.C. be commenced more than ten years from this said date of the certification shown hereon.

I hereby certify that this Well Location Certificate was prepared by me or under my direct supervision on 4/4/2013 for and on behalf of EnCana Oil & Gas (USA) Inc. That it is not a Land Survey Plat or an Improvement Survey Plat and that it is not to be relied upon for establishment of fences, buildings, or other future improvement lines.

John Robert McGehee LS#38219
Well: Pratt 4G-29H-P168 WLC