

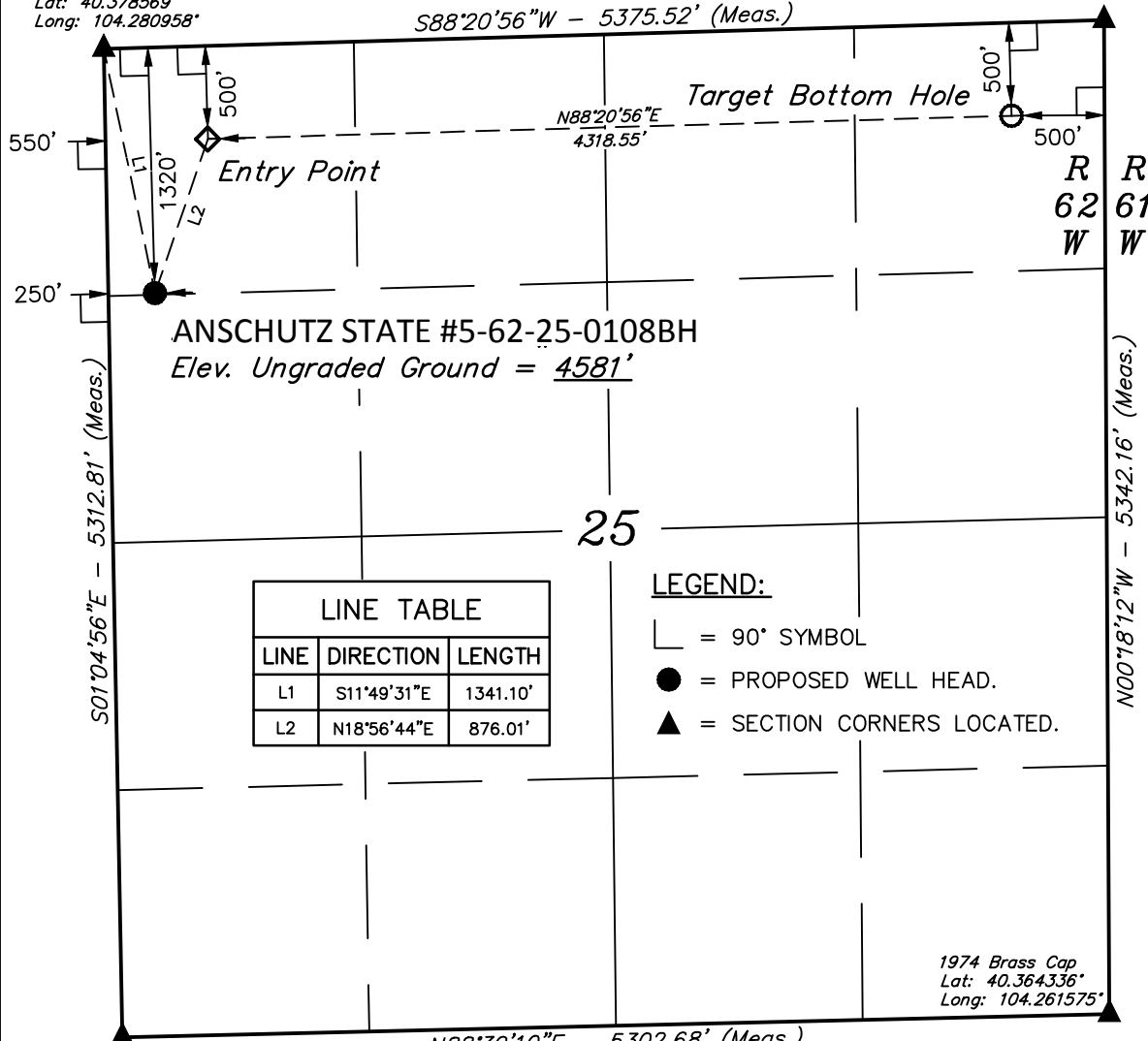
# T5N, R62W, 6th P.M.

## BILL BARRETT CORPORATION

2010 UELS Alum. Cap,  
0.6' High, "T" Post, Rebar  
Lat: 40.378569°  
Long: 104.280958°

2008 Alum. Cap  
0.1' Above Ground  
Lat: 40.378997°  
Long: 104.261678°

S88°20'56"W - 5375.52' (Meas.)



Well location, ANSCHUTZ STATE #5-62-25-0108BH, located as shown in the NW 1/4 NW 1/4 of Section 25, T5N, R62W, 6th P.M., Weld County, Colorado.

### BASIS OF ELEVATION

SPOT ELEVATION LOCATED AT THE NORTHWEST CORNER OF SECTION 19, T5N, R61W, 6th. P.M. TAKEN FROM THE POINT OF ROCKS, QUADRANGLE, COLORADO, WELD COUNTY, 7.5 MINUTE QUAD (TOPOGRAPHIC MAP) PUBLISHED BY THE UNITED STATES DEPARTMENT OF THE INTERIOR, GEOLOGICAL SURVEY. SAID ELEVATION IS MARKED AS BEING 4530 FEET.

### BASIS OF BEARINGS

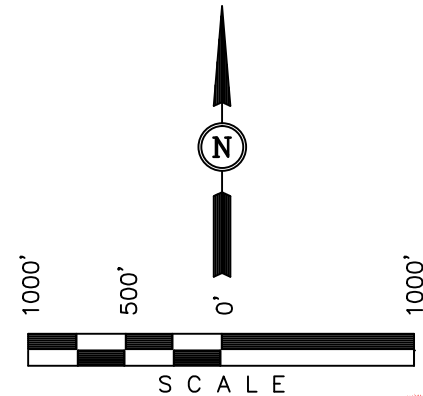
BASIS OF BEARINGS IS A G.P.S. OBSERVATION.

ANSCHUTZ STATE #5-62-25-0108BH  
Elev. Ungraded Ground = 4581'

| LINE TABLE |             |          |
|------------|-------------|----------|
| LINE       | DIRECTION   | LENGTH   |
| L1         | S11°49'31"E | 1341.10' |
| L2         | N18°56'44"E | 876.01'  |

### LEGEND:

- └ = 90° SYMBOL
- = PROPOSED WELL HEAD.
- ▲ = SECTION CORNERS LOCATED.



### CERTIFICATION

THIS IS TO CERTIFY THAT THE ABOVE PLAT WAS PREPARED FROM FIELD NOTES OF ACTUAL SURVEYS MADE BY ME OR UNDER MY SUPERVISION AND THAT THE SAME ARE TRUE AND CORRECT TO THE BEST OF MY KNOWLEDGE AND BELIEF.

REGISTERED LAND SURVEYOR  
REGISTRATION NO. 28285  
STATE OF COLORADO  
05-01-13

1974 Brass Cap  
1.0' Above Ground  
Lat: 40.363992°  
Long: 104.280594°

1974 Brass Cap  
Lat: 40.364336°  
Long: 104.261575°

N88°39'10"E - 5302.68' (Meas.)

PDOP = 1.3

## UINTAH ENGINEERING & LAND SURVEYING

85 SOUTH 200 EAST - VERNAL, UTAH 84078

(435) 789-1017

| NAD 83 (TARGET BOTTOM HOLE)            | NAD 83 (ENTRY POINT)                   | NAD 83 (SURFACE LOCATION)              |
|--|--|--|
| LATITUDE = 40°22'39.30" (40.377583)    | LATITUDE = 40°22'38.07" (40.377242)    | LATITUDE = 40°22'29.88" (40.374967)    |
| LONGITUDE = 104°15'48.46" (104.263461) | LONGITUDE = 104°16'44.23" (104.278953) | LONGITUDE = 104°16'47.90" (104.279972) |
| NAD 27 (TARGET BOTTOM HOLE)            | NAD 27 (ENTRY POINT)                   | NAD 27 (SURFACE LOCATION)              |
| LATITUDE = 40°22'39.37" (40.377603)    | LATITUDE = 40°22'38.13" (40.377258)    | LATITUDE = 40°22'29.95" (40.374986)    |
| LONGITUDE = 104°15'46.64" (104.262956) | LONGITUDE = 104°16'42.40" (104.278444) | LONGITUDE = 104°16'46.08" (104.279467) |
| STATE PLANE NAD 83                     | STATE PLANE NAD 83                     | STATE PLANE NAD 83                     |
| N: 1382796.21 E: 3344491.45            | N: 1382611.55 E: 3340177.97            | N: 1381779.32 E: 3339905.23            |
| STATE PLANE NAD 27                     | STATE PLANE NAD 27                     | STATE PLANE NAD 27                     |
| N: 382798.01 E: 2344641.48             | N: 382613.35 E: 2340327.99             | N: 381781.15 E: 2340055.26             |

|                         |                                  |                         |
|-------------------------|----------------------------------|-------------------------|
| SCALE<br>1" = 1000'     | DATE SURVEYED:<br>06-20-13       | DATE DRAWN:<br>06-25-13 |
| PARTY<br>B.L. D.W. K.O. | REFERENCES<br>G.L.O. PLAT        |                         |
| WEATHER<br>WARM         | FILE<br>BILL BARRETT CORPORATION |                         |