



May 23, 2013

Colorado Oil & Gas Conservation Commission
The Chancery Building
1120 Lincoln Street, Suite 801
Denver, CO 80203

Attn: Mr. Matt Lepore, Director

RE: Pratt 4C-29H-P168
Township 29, Range 1N, 6th P.M.
Section 29: 677' FSL; 1221' FEL (Surface Hole Location)
Section 20, 1N, 68W: 1150' FNL; 1950' FEL (Bottom Hole Location)
Weld County

Mr. Lepore,

Encana Oil & Gas (USA) Inc. ("Encana") is planning to drill the captioned boundary well in accordance with the provisions of COGCC Rule 318A.e.

Proposed spacing unit configuration:	T1N, R68W: Sec. 20: W/2E/2 Sec. 29: W/2E/2
Formation(s):	Codell
Spacing unit acreage:	320

Encana is the only working interest owner within the proposed spacing unit, therefore Encana hereby attests that no notice letters are required under COGCC Rule 318A.e.(6).

Enclosed is a copy of the map illustrating the proposed wellbore spacing unit to assist you in your review and approval of Encana's proposed APD for the captioned well.

Thank you for your time and attention to this matter. Encana respectfully requests that the COGCC review the enclosed information and approve the Application for Permit to Drill the captioned well.

Sincerely,

A handwritten signature in black ink, appearing to read "B. Lamond", written in a cursive style.

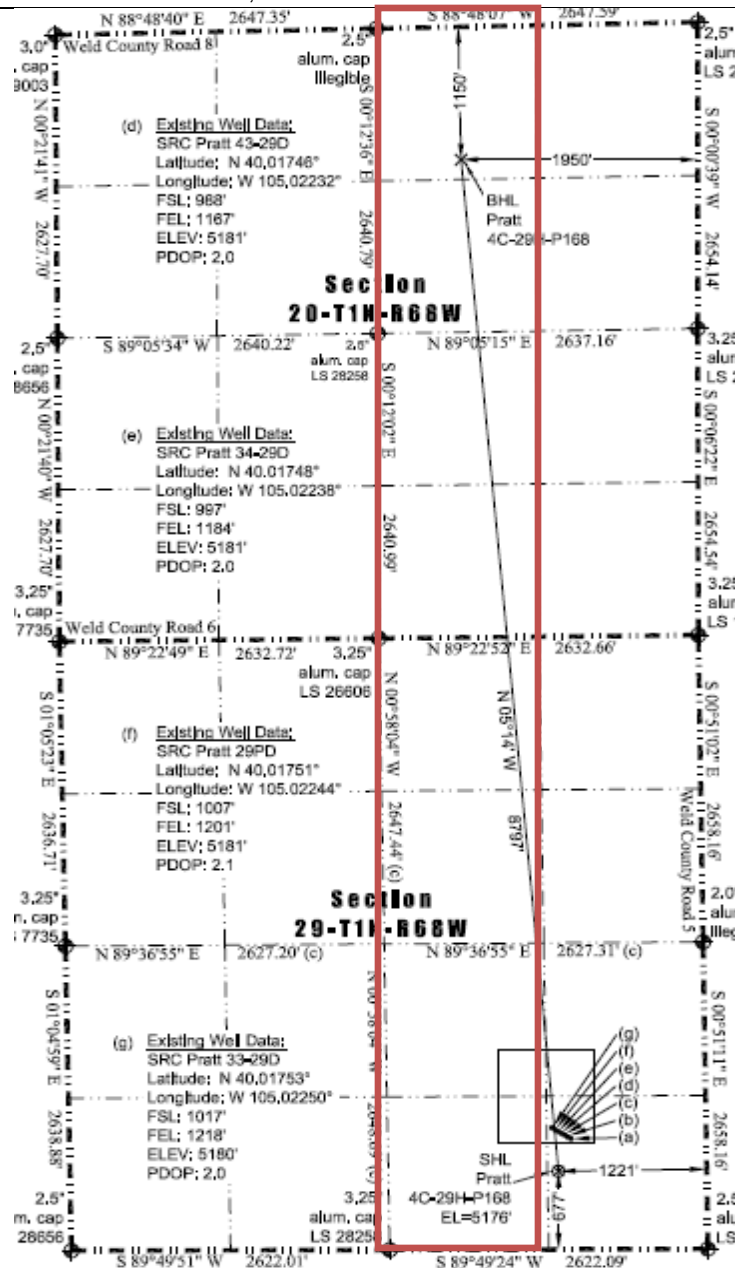
Bonnie Lamond
Permitting Technician

Pratt 4C-29H-P168 Spacing Unit

Red Outline = Proposed 320 acre Codell spacing unit
T1N R68W Section 20: W/2E/2, Section 29: W/2E/2
Weld County, Colorado

Surface Hole Location: T1N R68W, 6th P.M. Section 29: SE/4SE/4 677' FSL and 1221' FEL

Bottom Hole Location: T1N R68W, 6th P.M. Section 20: NW/4NE/4 1150' FNL and 1950' FEL





Encana Oil & Gas (USA) Inc.

Republic Plaza 370 17th Street Suite 1700 Denver CO 80202 USA 303.623.2300 encana.com