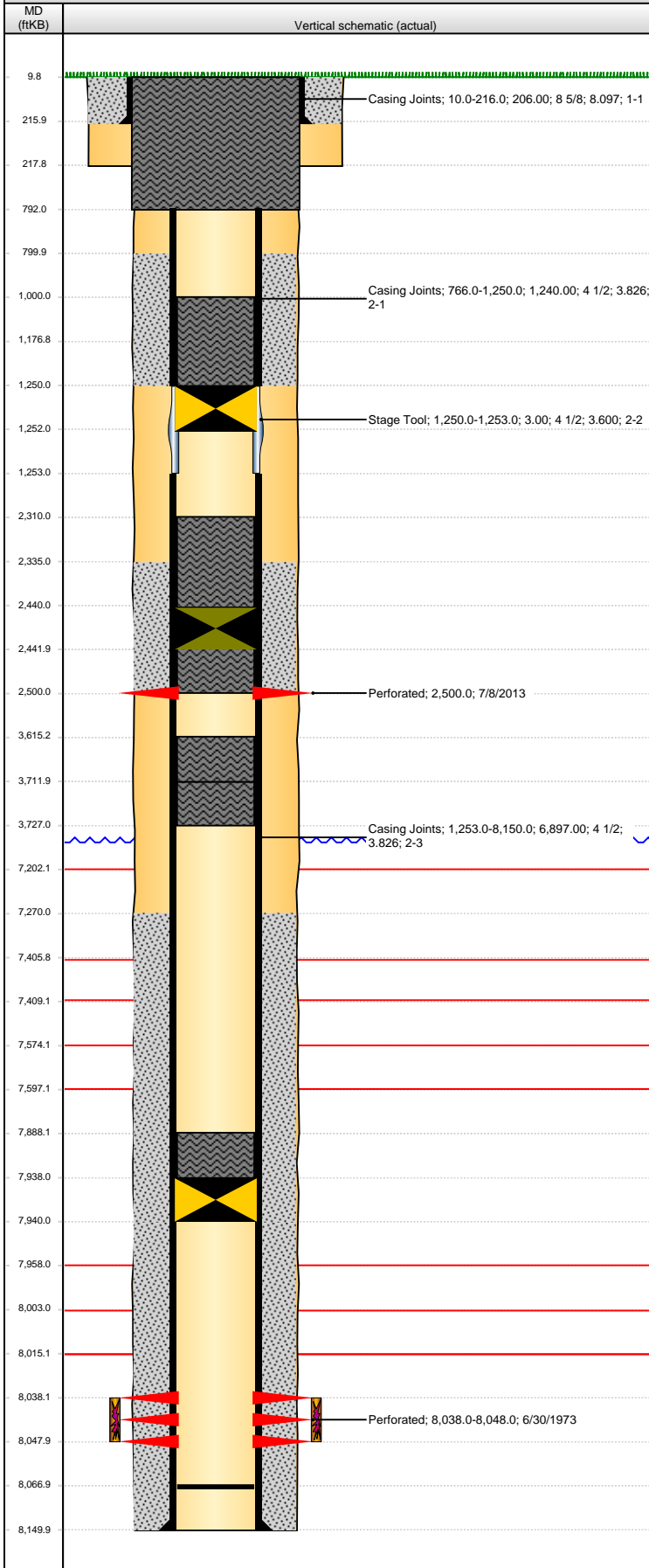


**Well Name: HECKENDORF 01**

VERTICAL - ORIGINAL HOLE, 7/26/2013 8:04:15 AM



## Well Header

API 05-001-06670	Business Unit WATTENBERG	District 15	Well Config VERTICAL
Original KB Elevation (ft) 5,060.00	KB - GL / MSL (ftKB) 10.00	Spud Date 5/4/1973	P & A Date 7/10/2013

Comment  
DV tool @ 1400' w/200x

Directions To Well

## Congressional Location

Quarter 1	Quarter 2	Quarter 3	Quarter 4	Section	Township	Twtnshp N...	Range	Rng E/W Dir
		NE	NE	14	1	S	66	W

## Bottom Hole Location

North-South Distance (ft)	From N or S Line	East-West Distance (ft)	From E or W Line

## Plug Back Total Depths

Date	Depth (ftKB)	Method	Com
5/15/1973	8,068.0	CASING TALLY	
7/1/2008	8,067.0	TAG	

## Wellbore Sections

Section Des	Size (in)	Act Top (ftKB)	Act Btm (ftKB)
SURFACE	12 1/4	10.0	218.0
PRODUCTION	7 7/8	218.0	8,150.0

## Zone Statuses

Zone Name	Status Date	Status	Job
J SAND	7/5/1973	PR	DRILLING/COMPLETION - ORIGINAL, 5/4/1973 00:00
J SAND	7/10/2013	P&A	ABANDON WELL, 6/27/2013 08:30

## Casing Strings

### Surface, 216.0ftKB

Casing Description	Run Date	OD (in)	Wt/Len (l...	Grade	Top (ftKB)	MD (ftKB)
Surface	5/5/1973	8 5/8	23.00	K-55	10.0	216.0

### Production, 8,150.0ftKB

Casing Description	Run Date	OD (in)	Wt/Len (l...	Grade	Top (ftKB)	MD (ftKB)
Production	5/15/1973	4 1/2	15.10		10.0	8,150.0

## Cement

Description	Top Depth (ftKB)	Bottom Depth (ftKB)
SURFACE CASING CEMENT	10.0	216.0
PRODUCTION CASING CEMENT	800.0	1,250.0
PRODUCTION CASING CEMENT	7,270.0	8,150.0
Cement Plug	7,888.0	7,938.0
Cement Plug	3,712.0	3,727.0
Cement Plug	3,615.0	3,712.0
Cement Plug	1,000.0	1,250.0
Cement Plug	2,310.0	2,440.0
Cement Plug	2,440.0	2,500.0
Cement Plug	2,335.0	2,500.0
Cement Plug	9.8	792.0

## Tubing Components

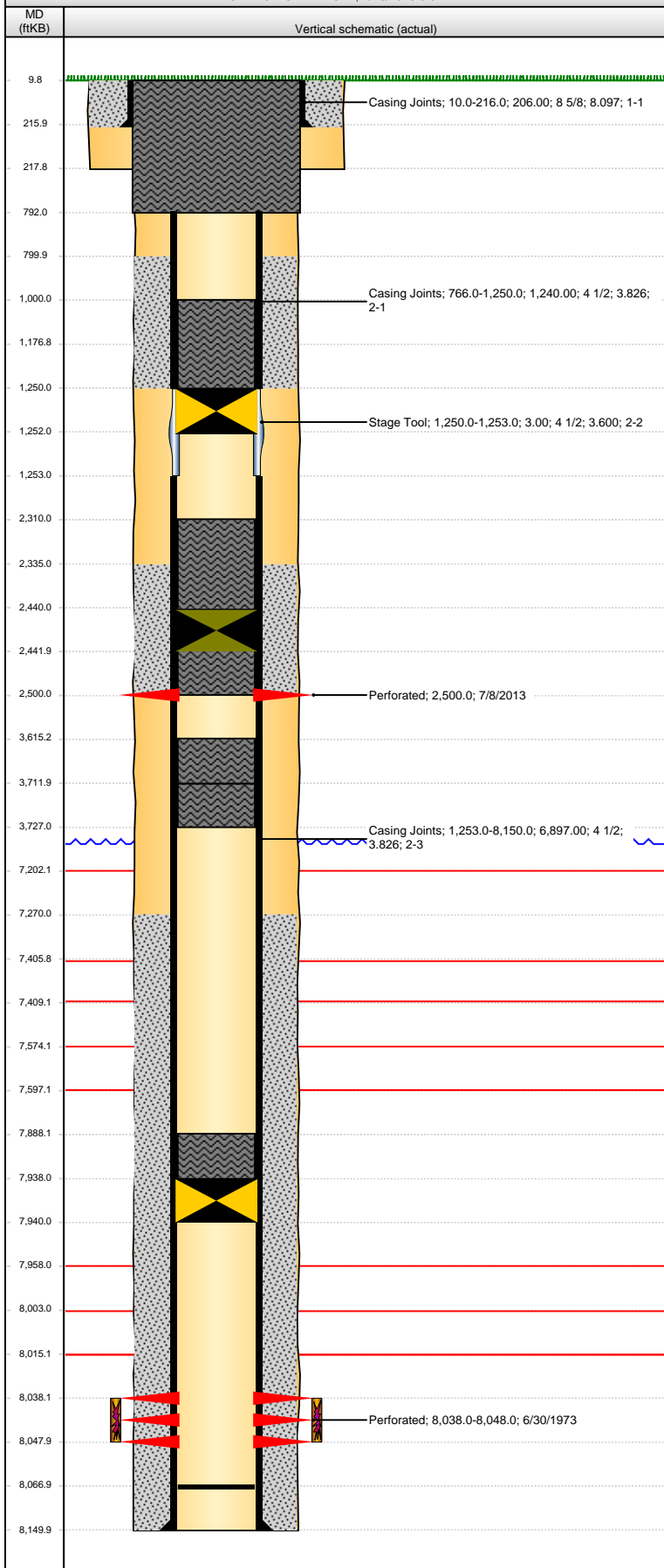
Item Des	OD (in)	Wt (lb/ft)	Grade	Jts	Len (ft)	Btm (ftKB)	Btm (TVD) (ftKB)

## Perforation Data

Zone	Bnch/St g	Entered Shot Total	Top (ftKB)	Btm (ftKB)	Date
		2	2,500.00	2,500.00	7/8/2013
J SAND, ORIGINAL HOLE		16	8,038.00	8,048.00	6/30/1973

**Well Name: HECKENDORF 01**

VERTICAL - ORIGINAL HOLE, 7/26/2013 8:04:17 AM



## Stimulations & Treatments

Date	Zone	Primary Job Type
7/1/1973	J SAND, ORIGINAL HOLE	
Technical Result	Tech Result Details	Tech Result Note

Comment

## Other In Hole

Run Date	Des	OD (in)	Top (ftKB)	Btm (ftKB)
6/27/2013	Cast Iron Bridge Plug	3.99	7,938.0	7,940.0
7/8/2013	Cast Iron Flow Through Plug	3.99	2,440.0	2,442.0
7/8/2013	Cast Iron Bridge Plug	3.99	1,250.0	1,252.0

## Logs

Date	Type	Top (ftKB)	Btm (ftKB)
5/15/1973	Induction	217.0	8,113.0