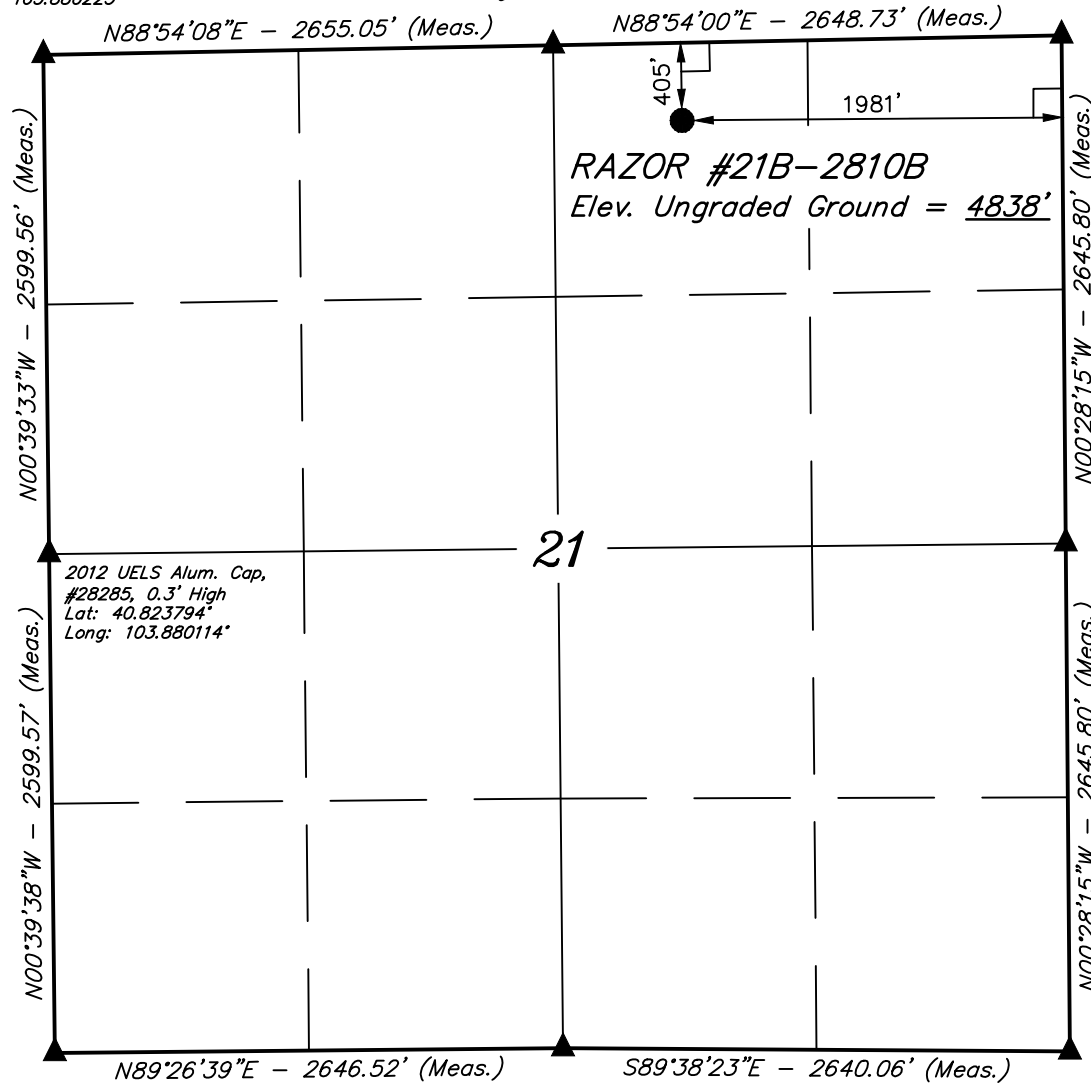


**T10N, R58W, 6th P.M.**

2011 UELS Alum. Cap,  
#17492  
Lat: 40.830928°  
Long: 103.880225°

2012 UELS Alum. Cap,  
#28285, 0.3' High  
Lat: 40.831072°  
Long: 103.870636°

2012 UELS Alum.  
Cap, #28285,  
0.5' Below Ground  
Lat: 40.831214°  
Long: 103.861069°



2010 UELS Alum. Cap,  
#17492, Flush W/ Ground  
Lat: 40.816664°  
Long: 103.880000°

2012 UELS Alum. Cap,  
0.5' High  
Lat: 40.816736°  
Long: 103.870442°

2010 UELS Alum. Cap,  
0.5' Below Ground  
Lat: 40.816692°  
Long: 103.860906°

**LEGEND:**

- └─┘ = 90° SYMBOL
- = PROPOSED WELL HEAD.
- ▲ = SECTION CORNERS LOCATED.

PDOP = 1.3

NAD 83 (SURFACE LOCATION)
LATITUDE = 40°49'47.98" (40.829994)
LONGITUDE = 103°52'05.56" (103.868211)
NAD 27 (SURFACE LOCATION)
LATITUDE = 40°49'48.04" (40.830011)
LONGITUDE = 103°52'03.75" (103.867708)

**WHITING OIL & GAS CORP.**

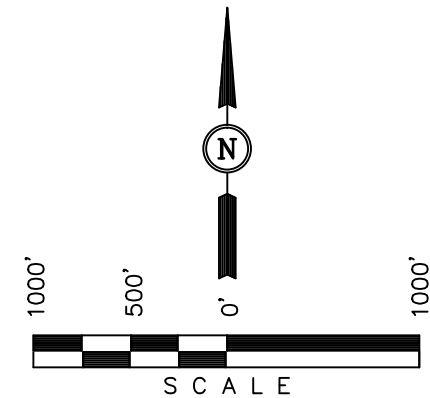
Well location, RAZOR #21B-2810B (SURFACE LOCATION), located as shown in the NW 1/4 NE 1/4 of Section 21, T10N, R58W, 6th P.M., Weld County, Colorado.

**BASIS OF ELEVATION**

SPOT ELEVATION LOCATED AT THE NORTHEAST CORNER OF SECTION 15, T9N, R58W, 6th P.M. TAKEN FROM THE GATEHOOK SPRING, QUADRANGLE, COLORADO, WELD COUNTY, 7.5 MINUTE QUAD (TOPOGRAPHIC MAP) PUBLISHED BY THE UNITED STATES DEPARTMENT OF THE INTERIOR, GEOLOGICAL SURVEY. SAID ELEVATION IS MARKED AS BEING 4679 FEET.

**BASIS OF BEARINGS**

BASIS OF BEARINGS IS A G.P.S. OBSERVATION.



**CERTIFICATE**

THIS IS TO CERTIFY THAT THE ABOVE PLAT WAS PREPARED FROM FIELD NOTES OF ACTUAL SURVEYS MADE BY ME OR UNDER MY SUPERVISION AND THAT THE SAME ARE TRUE AND CORRECT TO THE BEST OF MY KNOWLEDGE AND BELIEF.

REGISTERED LAND SURVEYOR  
REGISTRATION NO. 17492  
STATE OF COLORADO  
03-08-13

**UINTAH ENGINEERING & LAND SURVEYING**  
85 SOUTH 200 EAST - VERNAL, UTAH 84078  
(435) 789-1017

SCALE 1" = 1000'	DATE SURVEYED: 02-22-13	DATE DRAWN: 03-01-13
PARTY J.H. C.M. A.D.	REFERENCES G.L.O. PLAT	
WEATHER COLD	FILE WHITING OIL & GAS CORP.	

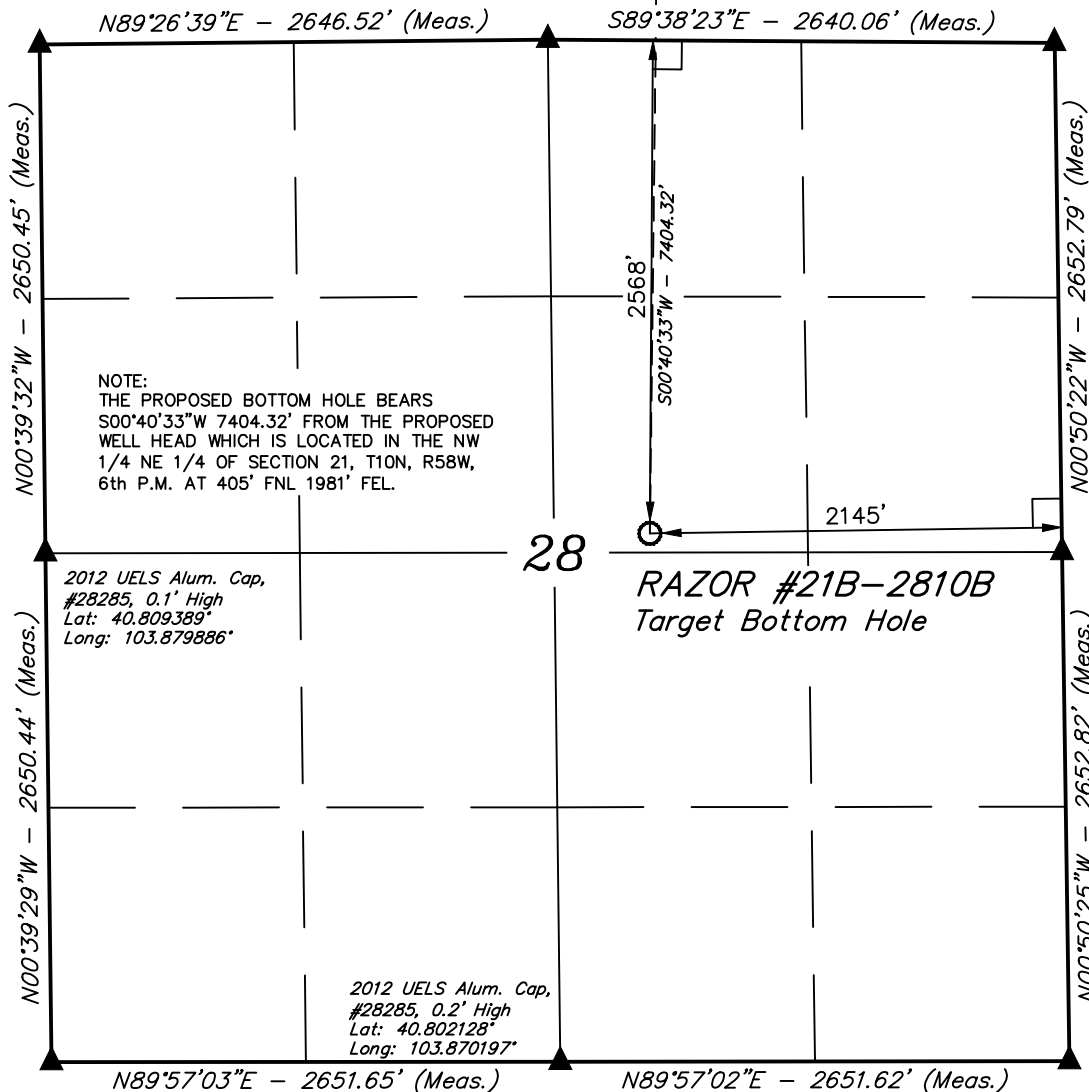
**T10N, R58W, 6th P.M.**

2010 UELS Alum. Cap,  
#17492, Flush W/Ground  
Lat: 40.816664°  
Long: 103.880000°

2012 UELS Alum.  
Cap, 0.5' High  
Lat: 40.816736°  
Long: 103.870442°

2010 UELS Alum. Cap,  
0.5' Below Ground  
Lat: 40.816692°  
Long: 103.860906°

● Surface  
Location



NOTE:  
THE PROPOSED BOTTOM HOLE BEARS  
S00°40'33"W 7404.32' FROM THE PROPOSED  
WELL HEAD WHICH IS LOCATED IN THE NW  
1/4 NE 1/4 OF SECTION 21, T10N, R58W,  
6th P.M. AT 405' FNL 1981' FEL.

2012 UELS Alum. Cap,  
#28285, 0.1' High  
Lat: 40.809389°  
Long: 103.879886°

2012 UELS Alum. Cap,  
#28285, 0.2' High  
Lat: 40.802128°  
Long: 103.870197°

2010 UELS Alum. Cap,  
0.3' High  
Lat: 40.802117°  
Long: 103.879772°

2010 UELS Alum. Cap,  
0.5' Below Ground  
Lat: 40.802136°  
Long: 103.860622°

### LEGEND:

- └─┘ = 90° SYMBOL
- = PROPOSED WELL HEAD.
- ▲ = SECTION CORNERS LOCATED.

NAD 83 (TARGET BOTTOM HOLE)	
LATITUDE	= 40°48'34.84" (40.809678)
LONGITUDE	= 103°52'06.66" (103.868517)
NAD 27 (TARGET BOTTOM HOLE)	
LATITUDE	= 40°48'34.89" (40.809692)
LONGITUDE	= 103°52'04.85" (103.868014)

## WHITING OIL & GAS CORP.

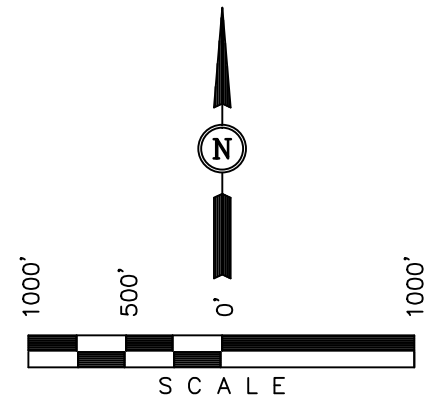
Well location, RAZOR #21B-2810B (TARGET  
BOTTOM HOLE), located as shown in the SW 1/4  
NE 1/4 of Section 28, T10N, R58W, 6th P.M.,  
Weld County, Colorado.

### BASIS OF ELEVATION

SPOT ELEVATION LOCATED AT THE NORTHEAST CORNER OF  
SECTION 15, T9N, R58W, 6th P.M. TAKEN FROM THE  
GATEHOOK SPRING, QUADRANGLE, COLORADO, WELD COUNTY,  
7.5 MINUTE QUAD (TOPOGRAPHIC MAP) PUBLISHED BY THE  
UNITED STATES DEPARTMENT OF THE INTERIOR, GEOLOGICAL  
SURVEY. SAID ELEVATION IS MARKED AS BEING 4679 FEET.

### BASIS OF BEARINGS

BASIS OF BEARINGS IS A G.P.S. OBSERVATION.



### CERTIFICATE

THIS IS TO CERTIFY THAT THE ABOVE PLAT WAS PREPARED FROM  
FIELD NOTES OF ACTUAL SURVEYS MADE BY ME OR UNDER MY  
SUPERVISION AND THAT THE SAME ARE TRUE AND CORRECT TO THE  
BEST OF MY KNOWLEDGE AND BELIEF.

REGISTERED LAND SURVEYOR  
REGISTRATION NO. 17492  
STATE OF COLORADO

REVISION: 04-04-13

**UINTAH ENGINEERING & LAND SURVEYING**  
85 SOUTH 200 EAST - VERNAL, UTAH 84078  
(435) 789-1017

SCALE 1" = 1000'	DATE SURVEYED: 02-22-13	DATE DRAWN: 03-01-13
PARTY J.H. C.M. A.D.	REFERENCES G.L.O. PLAT	
WEATHER COLD	FILE WHITING OIL & GAS CORP.	