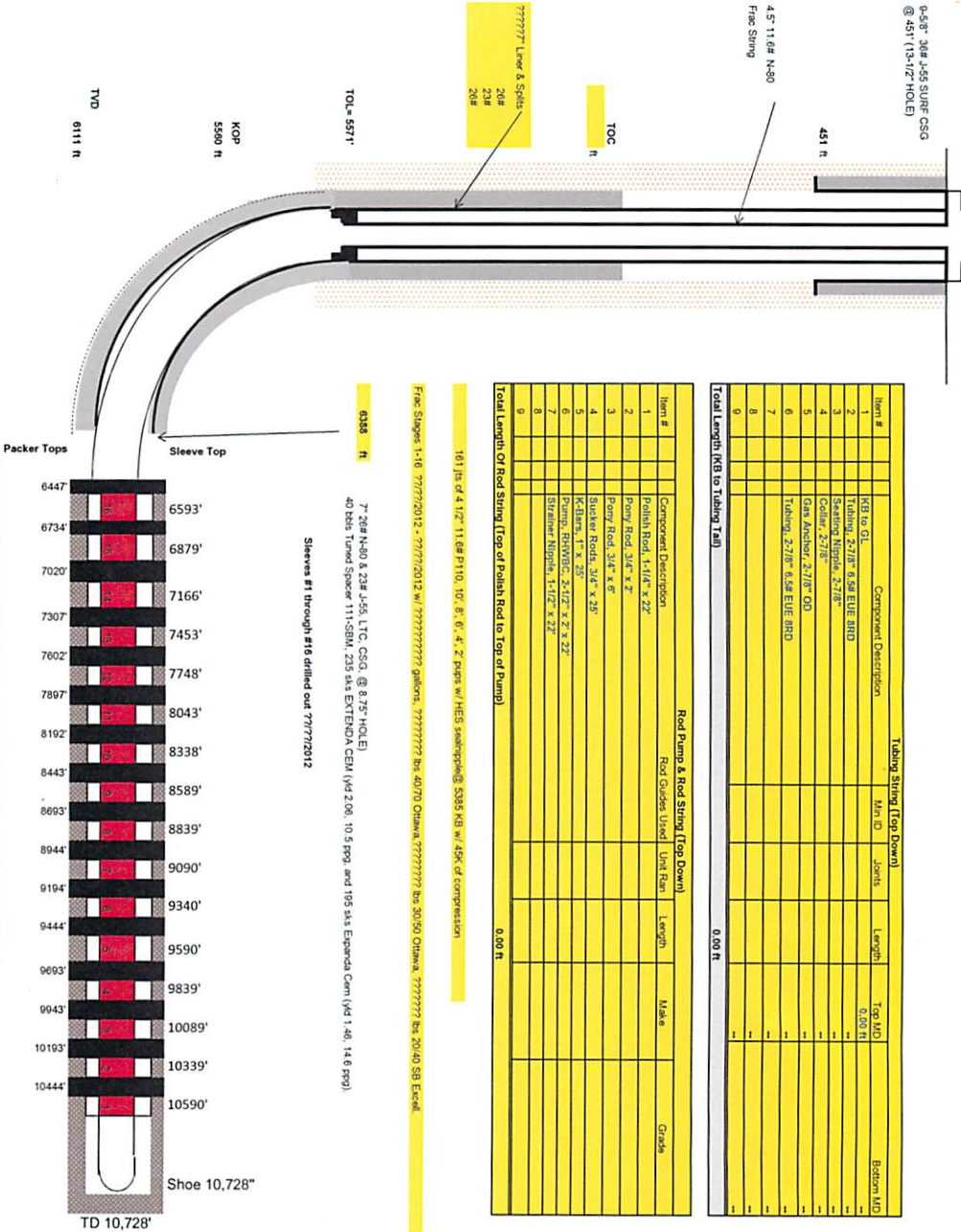


Spud Date: 3/29/2012

0.54" 36# 4.56 SURF CSG  
@ 451' (13-1/2" HOLE)



Tubing String (Top Down)					
Item #	Component Description	Blk ID	Joints	Length	Top MD / Bottom MD
1	KH to GL				
2	Tubing, 2 7/8" 6.5# EUE BRD			0.00 ft	
3	Sealing Nipple, 2 7/8"				
4	Collar, 2 7/8"				
5	Gas Anchor, 2 7/8" OD				
6	Tubing, 2 7/8" 4.5# EUE BRD				
7					
8					
9					
Total Length (KB to Tubing Tail)					0.00 ft

Rod Pump & Rod String (Top Down)					
Item #	Component Description	Blk ID	Length	Make	Grade
1	Concentric Description				
2	Polish Rod, 1 1/4" x 22'				
3	Pony Rod, 3/4" x 2'				
4	Pony Rod, 3/4" x 6'				
5	Sucker Rods, 3/4" x 25'				
6	K-Bar, 1" x 25'				
7	Pump, RHYMCO, 2 1/2" x 2' x 22'				
8	Starter Nipple, 1 1/2" x 22'				
9					
Total Length Of Rod String (Top of Polish Rod to Top of Pump)					0.00 ft

161 lbs of 4 1/2" 11.6# P110, 10', 6', 4', 2' pipe w/ HES seal/pack @ 5385 KB w/ 45% of compression

Free Shaps 1-16 777772012 - 777772012 w/ 7777777777 galena, 7777777777 bis 40700 Obama, 7777777777 bis 30100 Obama, 7777777777 bis 20100 SB Escal

6335 ft 7" 28# N-80 & 23# J-55, LTC, CSG, @ 8.75" HOLE  
40 Bbls Tuned Spacer 111-SBM, 235 s/s EXTEND CEM (w/ 2.06, 10.5 ppg, and 195 s/s Expanda Cem (w/ 1.46, 14.6 ppg)

Sleeves #1 through #16 drilled out 777772012

Step	Sleeve Top (ft)	Ball Size	Flush (Bbls)	Rounddown Flush (Bbls)	-30 Bbls Flush (Bbls)
1	10,590	2,307	164.57	164	134
2	10,339	2,379	160.67	160	130
3	10,089	2,452	156.78	156	126
4	9,839	2,527	152.80	152	122
5	9,590	2,603	149.03	149	119
6	9,340	2,681	145.14	145	115
7	9,090	2,761	141.26	141	111
8	8,839	2,842	137.36	137	107
9	8,589	2,925	133.47	133	103
10	8,338	3,009	129.57	129	99
11	8,088	3,104	124.69	124	94
12	7,837	3,201	120.40	120	90
13	7,587	3,301	115.82	115	85
14	7,336	3,414	111.36	111	81
15	7,085	3,531	106.80	106	76
16	6,833	3,650	102.46	102	72