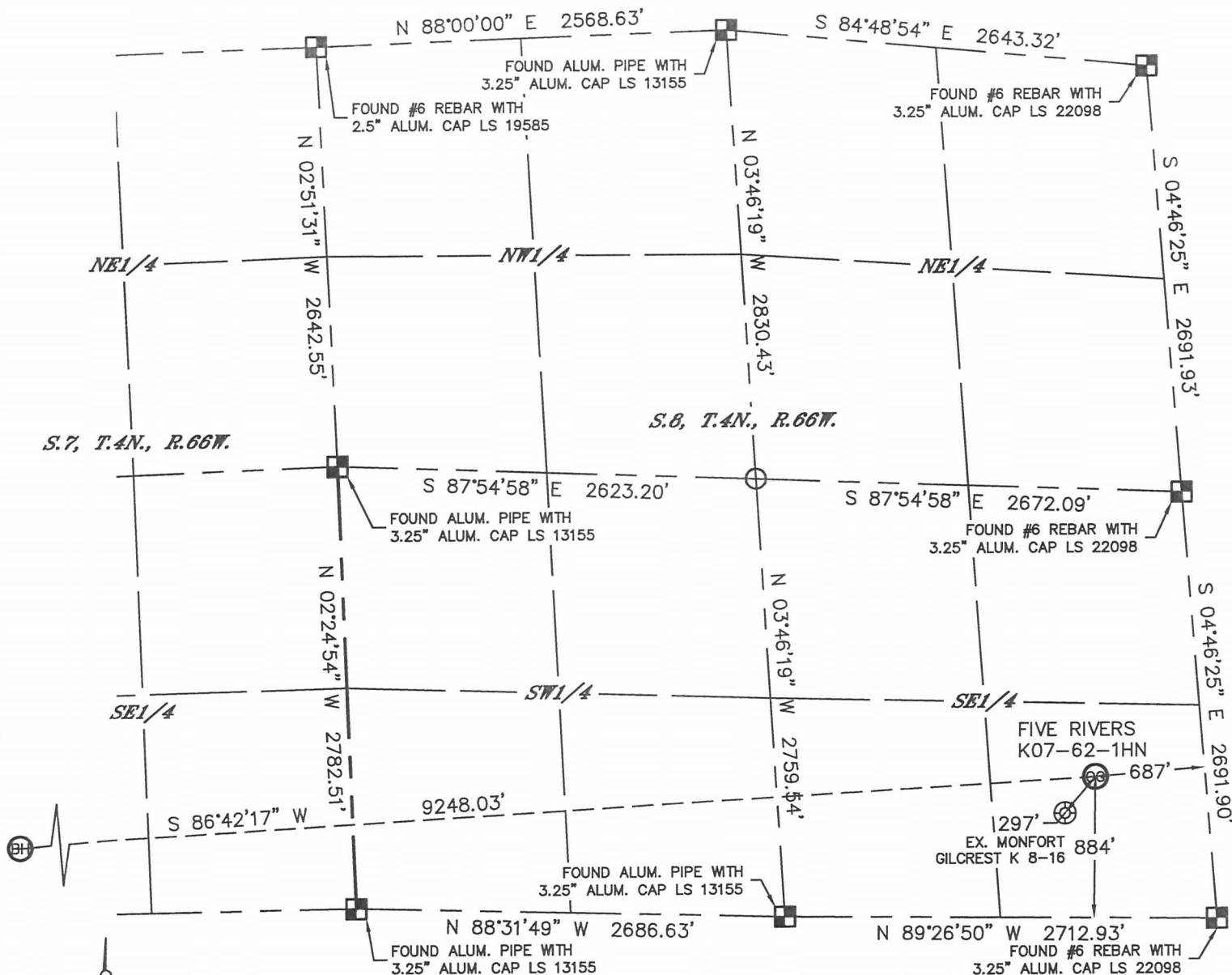


# WELL LOCATION CERTIFICATE

THIS MAP DOES NOT REPRESENT A BOUNDARY SURVEY

SECTION: 8  
TOWNSHIP: 4N  
RANGE: 66W



In accordance with a request from Brian DeRose with Noble Energy Inc. Lat40°, Inc. has determined the surface location of the FIVE RIVERS K07-62-1HN to be 884' from the SOUTH line and 687' from the EAST line as measured at right angles from the section lines of Section 8, Township 4 North, Range 66 West and the bottom hole to be 330' from the SOUTH line and 535' from the WEST line as measured at right angles from the section lines of Section 7, Township 4 North, Range 66 West of the Sixth Principal Meridian, County of Weld, State of Colorado.

I hereby state that this Well Location Certificate was prepared by me, or under my direct supervision, that the fieldwork was completed on 5/22/2013, for and on behalf of Noble Energy Inc. That this is not a Land Survey Plat or an Improvement Survey Plat, and that it is not to be relied upon for establishment of fence, building, or other future improvement lines.

## NOTE:

- 1) Bearings shown are Grid Bearings of the Colorado State Plane Coordinate System, North Zone, North American Datum 1983/2007. The lineal dimensions as contained herein are based upon the "U.S. Survey Foot."
- 2) Ground elevations are based on an observed GPS elevation (NAVD 1988 DATUM).
- 3) NEAREST EXISTING WELL: MONFORT GILCREST K8-16, 297'
- 4) IMPROVEMENTS: See LOCATION DRAWING for all visible improvements within 400' of disturbed area.
- 5) SURFACE USE: CROPLAND
- 6) INSTRUMENT OPERATOR: BRIAN ROTTINGHAUS

## SURFACE LOCATION

LAT: 40.32138°N  
LONG: 104.79468°W  
PDOP: 1.8  
ELEV: 4702'  
1/4, 1/4: SE1/4SE1/4  
NEAREST PROPERTY LINE: 465' NORTH

## BOTTOM HOLE

LAT: 40.32011°N  
LONG: 104.82780°W

## NOTE

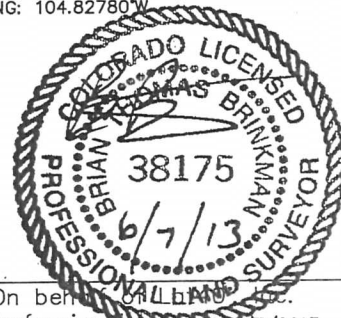
According to Colorado law, you must commence any legal action based upon any defect in this W.L.C. within three years after you discover such defect. In no event, may any action based upon any defect in this survey be commenced more than ten years after the date of the certificate shown hereon. (13-80-105 C.R.S.)

## LEGEND

- = ALIQUOT MONUMENT AS DESCRIBED
- = CALCULATED POSITION

## SHEET 1 OF 2

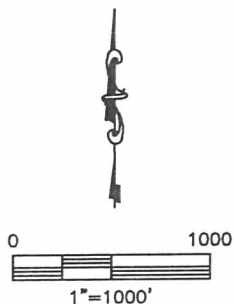
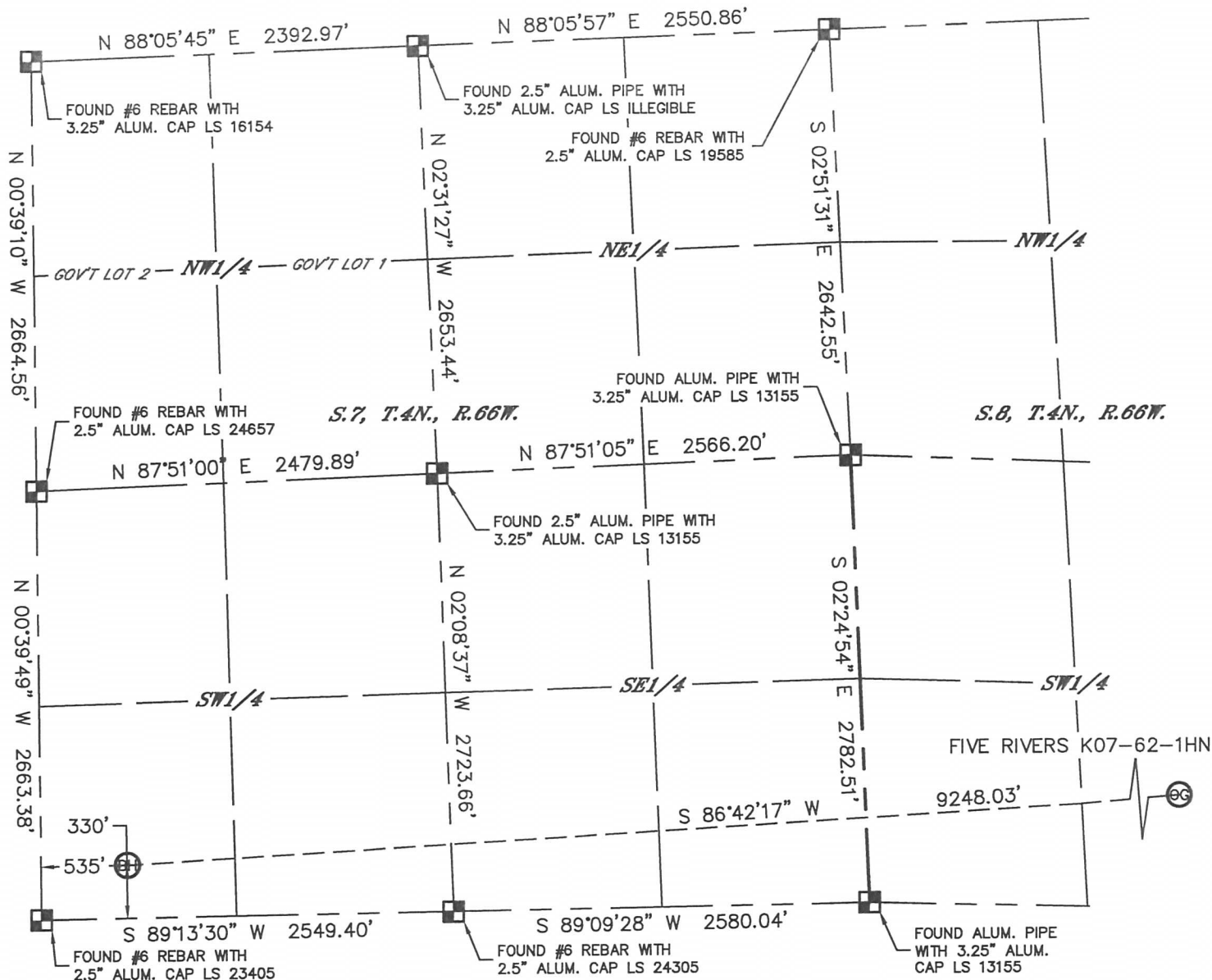
Brian T. Brinkman-On behalf of Lat40°, Inc.  
Colorado Licensed Professional Land Surveyor No. 38175  
DATE: 6/7/2013  
PROJECT#: 2013063



# WELL LOCATION CERTIFICATE

THIS MAP DOES NOT REPRESENT A BOUNDARY SURVEY

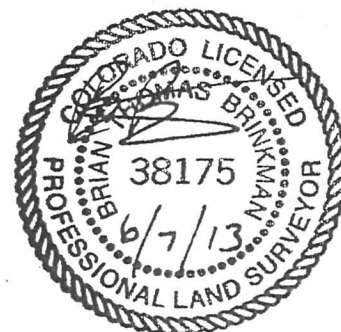
SECTION: 8  
TOWNSHIP: 4N  
RANGE: 66W



**NOTE**  
According to Colorado law, you must commence any legal action based upon any defect in this W.L.C. within three years after you discover such defect. In no event, may any action based upon any defect in this survey be commenced more than ten years after the date of the certificate shown hereon. (13-80-105 C.R.S.)

**LEGEND**

- = ALIQUOT MONUMENT AS DESCRIBED
- = CALCULATED POSITION



**SHEET 2 OF 2**

Brian T. Brinkman—On behalf of Lat40°, Inc.  
Colorado Licensed Professional  
Land Surveyor No. 38175

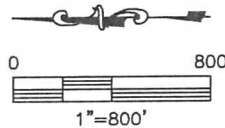
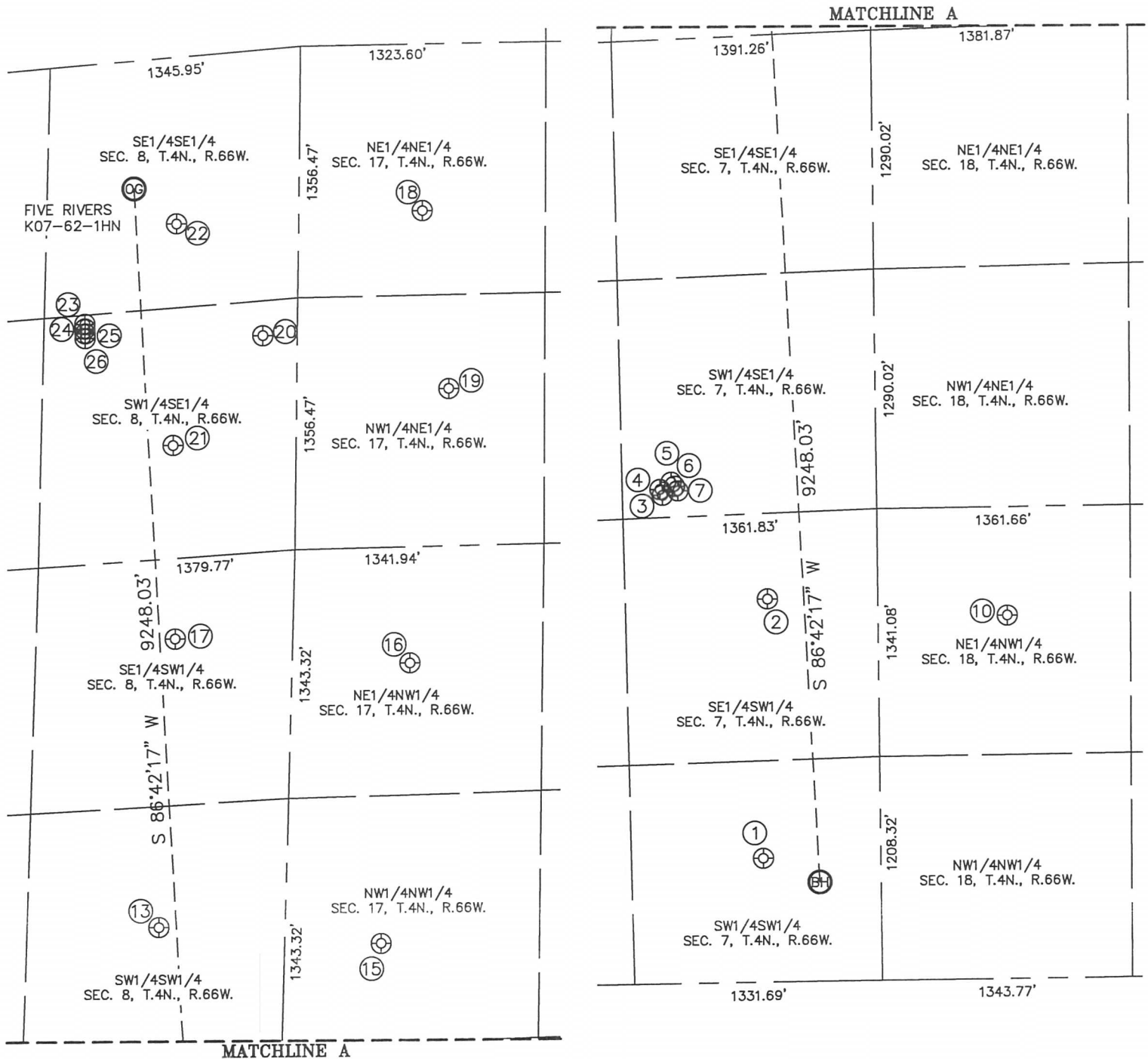
DATE: 6/7/2013  
PROJECT#: 2013063

# SITE SKETCH

FIVE RIVERS K07-62-1HN

(1 OF 2)

SECTION: 8  
TOWNSHIP: 4N  
RANGE: 66W



# SITE SKETCH

## FIVE RIVERS K07-62-1HN

(2 OF 2)

SECTION: 8  
TOWNSHIP: 4N  
RANGE: 66W

①

BERNHARDT 7-14  
SW1/4SW1/4  
631' FSL  
669' FWL  
LAT-40.32094°N  
LONG-104.82732°W  
PDOP: 3.9  
ELEV: 4737'

②

BERNHARDT 7-16  
SE1/4SW1/4  
593' FSL  
2068' FWL  
LAT-40.32086°N  
LONG-104.82230°W  
PDOP: 3.9  
ELEV: 4718'

③

BERNHARDT 7-31  
SW1/4SE1/4  
1149' FSL  
2453' FEL  
LAT-40.32240°N  
LONG-104.82026°W  
PDOP: 3.7  
ELEV: 4713'

④

KAMMERZELL 7-44  
SW1/4SE1/4  
1162' FSL  
2421' FEL  
LAT-40.32243°N  
LONG-104.82014°W  
PDOP: 5.0  
ELEV: 4713'

⑤

KAMMERZELL 7-43  
SW1/4SE1/4  
1101' FSL  
2384' FEL  
LAT-40.32227°N  
LONG-104.82001°W  
PDOP: 4.9  
ELEV: 4712'

⑥

GREENHEAD 18-11  
SW1/4SE1/4  
1084' FSL  
2408' FEL  
LAT-40.32222°N  
LONG-104.82009°W  
PDOP: 3.3  
ELEV: 4712'

⑦

GREENHEAD 18-12  
SW1/4SE1/4  
1066' FSL  
2432' FEL  
LAT-40.32217°N  
LONG-104.82017°W  
PDOP: 3.2  
ELEV: 4712'

⑩

EHRlich 3-18  
NE1/4NW1/4  
695' FNL  
1962' FWL  
LAT-40.31732°N  
LONG-104.82267°W  
PDOP: 1.6  
ELEV: 4714'

⑬

EDKAM 5-34  
SW1/4SW1/4  
677' FSL  
677' FWL  
LAT-40.32109°N  
LONG-104.80897°W  
PDOP: 2.6  
ELEV: 4707'

⑮

LEWIS 1-C  
NW1/4NW1/4  
519' FNL  
540' FWL  
LAT-40.31781°N  
LONG-104.80934°W  
PDOP: 2.1  
ELEV: 4711'

⑯

LEWIS #2-20  
NE1/4NW1/4  
635' FNL  
2049' FWL  
LAT-40.31736°N  
LONG-104.80391°W  
PDOP: 2.0  
ELEV: 4706'

⑰

MONFORT GILCREST  
K8-14  
SE1/4SW1/4  
631' FSL  
2231' FWL  
LAT-40.32082°N  
LONG-104.80338°W  
PDOP: 2.0  
ELEV: 4705'

⑱

FRONT RANGE 1-17  
NE1/4NE1/4  
665' FNL  
900' FEL  
LAT-40.31713°N  
LONG-104.79518°W  
PDOP: 2.0  
ELEV: 4733'

⑲

TIGGER K17-2  
NW1/4NE1/4  
819' FNL  
1858' FEL  
LAT-40.31675°N  
LONG-104.79861°W  
PDOP: 2.0  
ELEV: 4705'

⑳

FIVE RIVERS K17-27  
SW1/4SE1/4  
187' FSL  
1534' FEL  
LAT-40.31950°N  
LONG-104.79754°W  
PDOP: 4704  
ELEV: 2.1'

㉑

MONFORT GILCREST  
K8-15  
SW1/4SE1/4  
660' FSL  
2080' FEL  
LAT-40.32083°N  
LONG-104.79963°W  
PDOP: 2.4  
ELEV: 4704'

㉒

MONFORT GILCREST  
K8-16  
SE1/4SE1/4  
654' FSL  
895' FEL  
LAT-40.32075°N  
LONG-104.79537°W  
PDOP: 2.3  
ELEV: 4702'

㉓

FIVE RIVERS K09-33D  
SW1/4SE1/4  
1140' FSL  
1390' FEL  
LAT-40.32211°N  
LONG-104.79728°W  
PDOP: 2.2  
ELEV: 4703'

㉔

FIVE RIVERS K16-30D  
SW1/4SE1/4  
1140' FSL  
1414' FEL  
LAT-40.32211°N  
LONG-104.7737°W  
PDOP: 1.7  
ELEV: 4703'

㉕

FIVE RIVERS K08-23  
SW1/4SE1/4  
1139' FSL  
1440' FEL  
LAT-40.32211°N  
LONG-104.79746°W  
PDOP: 1.7  
ELEV: 4703'

㉖

FIVE RIVERS K08-24D  
SW1/4SE1/4  
1138' FSL  
1465' FEL  
LAT-40.32211°N  
LONG-104.79755°W  
PDOP: 2.7  
ELEV: 4703'