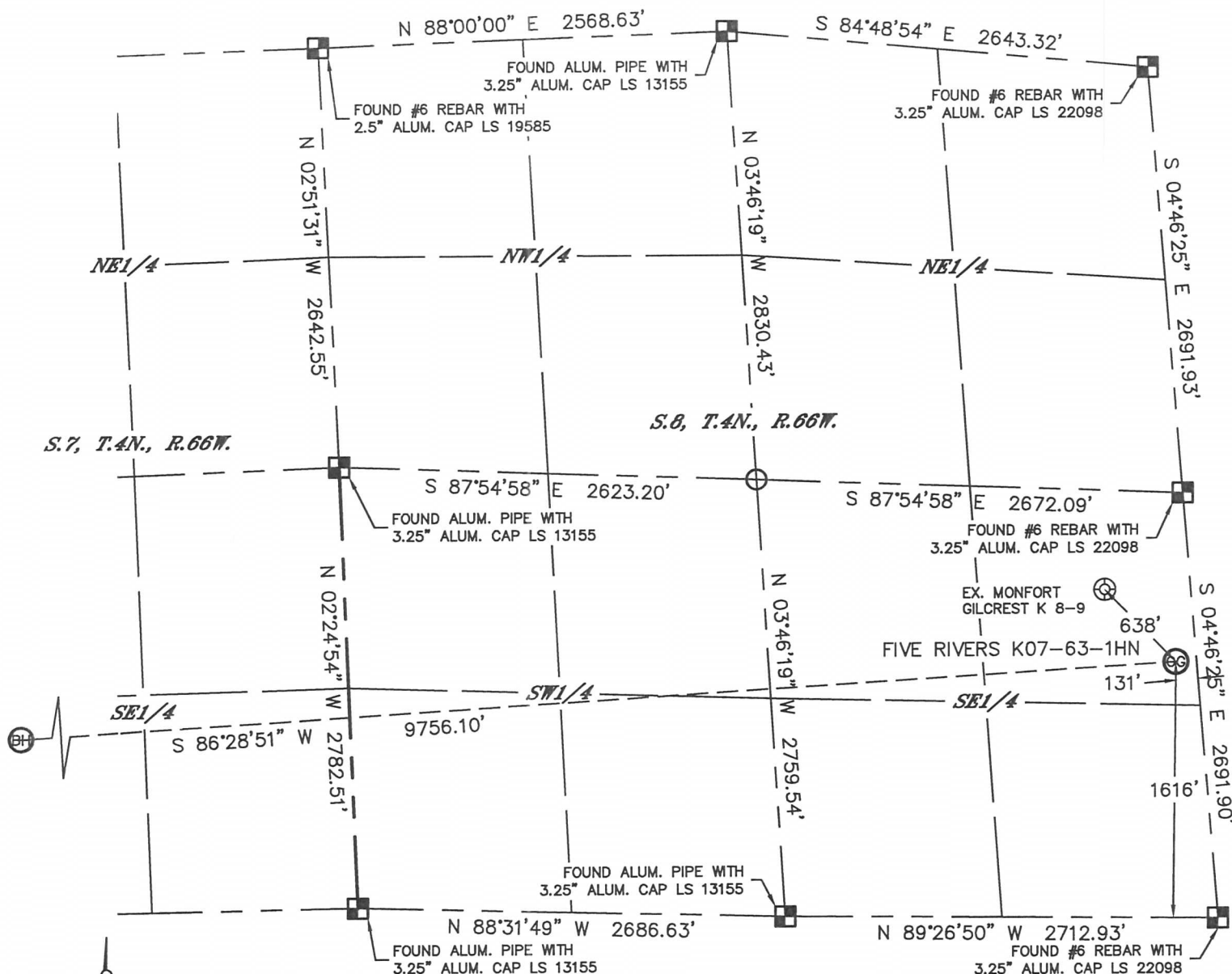


WELL LOCATION CERTIFICATE

THIS MAP DOES NOT REPRESENT A BOUNDARY SURVEY

SECTION: 8
TOWNSHIP: 4N
RANGE: 66W

In accordance with a request from Brian DeRose with Noble Energy Inc., Lat40°, Inc. has determined the surface location of the FIVE RIVERS K07-63-1HN to be 1616' from the SOUTH line and 131' from the EAST line as measured at right angles from the section lines of Section 8, Township 4 North, Range 66 West and the bottom hole to be 990' from the SOUTH line and 535' from the WEST line as measured at right angles from the section lines of Section 7, Township 4 North, Range 66 West of the Sixth Principal Meridian, County of Weld, State of Colorado.

I hereby state that this Well Location Certificate was prepared by me, or under my direct supervision, that the fieldwork was completed on 5/22/2013, for and on behalf of Noble Energy Inc. That this is not a Land Survey Plat or an Improvement Survey Plat, and that it is not to be relied upon for establishment of fence, building, or other future Improvement lines.

NOTE:

- 1) Bearings shown are Grid Bearings of the Colorado State Plane Coordinate System, North Zone, North American Datum 1983/2007. The lineal dimensions as contained herein are based upon the "U.S. Survey Foot."
- 2) Ground elevations are based on an observed GPS elevation (NAVD 1988 DATUM).
- 3) NEAREST EXISTING WELL: MONFORT GILCREST K8-9, 638'
- 4) IMPROVEMENTS: See LOCATION DRAWING for all visible improvements within 400' of disturbed area.
- 5) SURFACE USE: CROPLAND
- 6) INSTRUMENT OPERATOR: BRIAN ROTTINGHAUS

SURFACE LOCATION

LAT: 40.32336N
LONG: 104.79287W
PDOP: 2.1
ELEV: 4701'
1/4, 1/4: NE1/4SE1/4
NEAREST PROPERTY LINE: 131' EAST

BOTTOM HOLE

LAT: 40.32192N
LONG: 104.82780W

NOTE

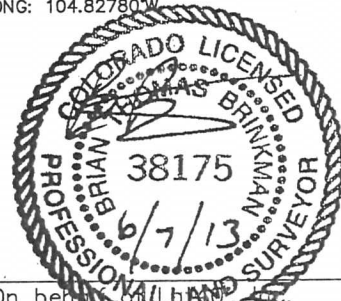
According to Colorado law, you must commence any legal action based upon any defect in this W.L.C. within three years after you discover such defect. In no event, may any action based upon any defect in this survey be commenced more than ten years after the date of the certificate shown hereon. (13-80-105 C.R.S.)

LEGEND

- = ALIQUOT MONUMENT AS DESCRIBED
○ = CALCULATED POSITION

SHEET 1 OF 2

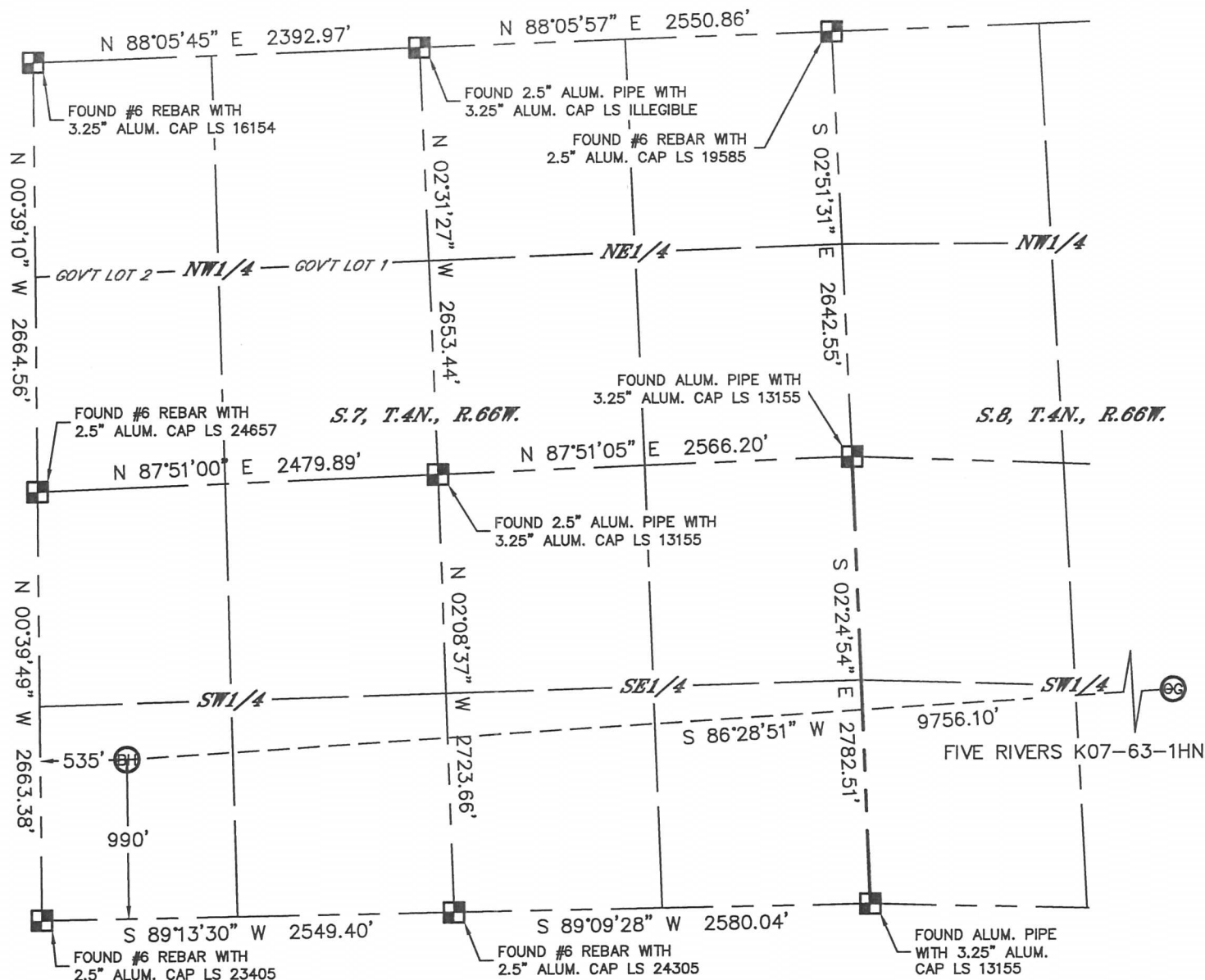
Brian T. Brinkman—On behalf of
Colorado Licensed Professional Surveyor No. 38175
PROJECT#: 2013063



WELL LOCATION CERTIFICATE

THIS MAP DOES NOT REPRESENT A BOUNDARY SURVEY

SECTION: 8
TOWNSHIP: 4N
RANGE: 66W



NOTE

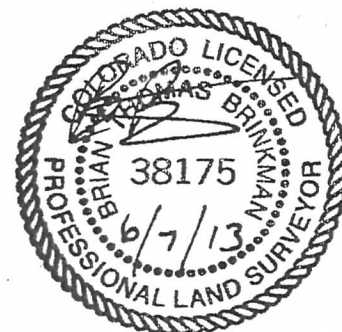
According to Colorado law, you must commence any legal action based upon any defect in this W.L.C. within three years after you discover such defect. In no event, may any action based upon any defect in this survey be commenced more than ten years after the date of the certificate shown hereon. (13-80-105 C.R.S.)

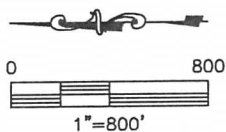
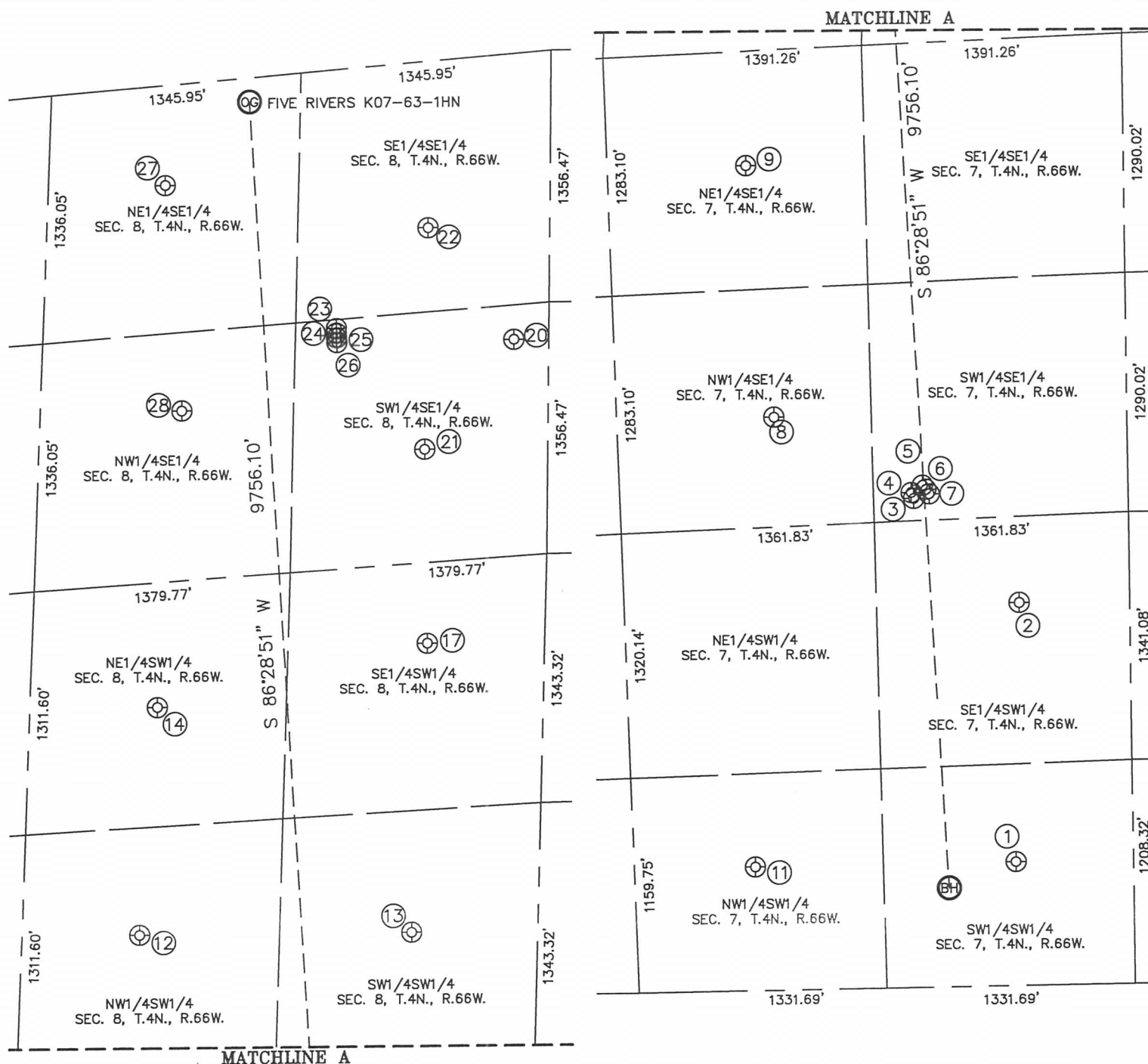
LEGEND

- = ALIQUOT MONUMENT AS DESCRIBED
- = CALCULATED POSITION

SHEET 2 OF 2

Brian T. Brinkman—On behalf of Lat40°, Inc.
Colorado Licensed Professional Land Surveyor No. 38175
DATE: 6/7/2013
PROJECT#: 2013063





SITE SKETCH

FIVE RIVERS K07-63-1HN

(2 OF 2)

SECTION: 8
TOWNSHIP: 4N
RANGE: 66W

①

BERNHARDT 7-14
SW1/4SW1/4
631' FSL
669' FWL
LAT-40.32094°N
LONG-104.82732°W
PDOP: 3.9
ELEV: 4737'

②

BERNHARDT 7-16
SE1/4SW1/4
593' FSL
2068' FWL
LAT-40.32086°N
LONG-104.82230°W
PDOP: 3.9
ELEV: 4718'

③

BERNHARDT 7-31
SW1/4SE1/4
1149' FSL
2453' FEL
LAT-40.32240°N
LONG-104.82026°W
PDOP: 3.7
ELEV: 4713'

④

KAMMERZELL 7-44
SW1/4SE1/4
1162' FSL
2421' FEL
LAT-40.32243°N
LONG-104.82014°W
PDOP: 5.0
ELEV: 4713'

⑤

KAMMERZELL 7-43
SW1/4SE1/4
1101' FSL
2384' FEL
LAT-40.32227°N
LONG-104.82001°W
PDOP: 4.9
ELEV: 4712'

⑥

GREENHEAD 18-11
SW1/4SE1/4
1084' FSL
2408' FEL
LAT-40.32222°N
LONG-104.82009°W
PDOP: 3.3
ELEV: 4712'

⑦

GREENHEAD 18-12
SW1/4SE1/4
1066' FSL
2432' FEL
LAT-40.32217°N
LONG-104.82017°W
PDOP: 3.2
ELEV: 4712'

⑧

KAMMERZELL 7-42
NW1/4SE1/4
1892' FSL
1980' FEL
LAT-40.32444°N
LONG-104.81865°W
PDOP: 3.0
ELEV: 4733'

⑨

KAMMERZELL 7-41
NE1/4SE1/4
2023' FSL
617' FEL
LAT-40.32483°N
LONG-104.81378°W
PDOP: 2.7
ELEV: 4709'

⑪

BERNHARDT 1-11
NW1/4SW1/4
2028' FSL
668' FWL
LAT-40.32478°N
LONG-104.82734°W
PDOP: 1.4
ELEV: 4734'

⑫

KAMMERZELL, ED 3-28
NW1/4SW1/4
2138' FSL
736' FWL
LAT-40.32510°N
LONG-104.80894°W
PDOP: 2.4
ELEV: 4713'

⑬

EDKAM 5-34
SW1/4SW1/4
677' FSL
677' FWL
LAT-40.32109°N
LONG-104.80897°W
PDOP: 2.6
ELEV: 4707'

⑭

EDKAM 4-33
NE1/4SW1/4
2072' FSL
1957' FWL
LAT-40.32480°N
LONG-104.80454°W
PDOP: 2.0
ELEV: 4705'

⑰

MONFORT GILCREST
K8-14
SE1/4SW1/4
631' FSL
2231' FWL
LAT-40.32082°N
LONG-104.80338°W
PDOP: 2.0
ELEV: 4705'

⑳

FIVE RIVERS K17-27
SW1/4SE1/4
187' FSL
1534' FEL
LAT-40.31950°N
LONG-104.79754°W
PDOP: 4704
ELEV: 2.1'

㉑

MONFORT GILCREST
K8-15
SW1/4SE1/4
660' FSL
2080' FEL
LAT-40.32083°N
LONG-104.79963°W
PDOP: 2.4
ELEV: 4704'

㉒

MONFORT GILCREST
K8-16
SE1/4SE1/4
654' FSL
895' FEL
LAT-40.32075°N
LONG-104.79537°W
PDOP: 2.3
ELEV: 4702'

㉓

FIVE RIVERS K09-33D
SW1/4SE1/4
1140' FSL
1390' FEL
LAT-40.32211°N
LONG-104.79728°W
PDOP: 2.2
ELEV: 4703'

㉔

FIVE RIVERS K16-30D
SW1/4SE1/4
1140' FSL
1414' FEL
LAT-40.32211°N
LONG-104.7737°W
PDOP: 1.7
ELEV: 4703'

㉕

FIVE RIVERS K08-23
SW1/4SE1/4
1139' FSL
1440' FEL
LAT-40.32211°N
LONG-104.79746°W
PDOP: 1.7
ELEV: 4703'

㉖

FIVE RIVERS K08-24D
SW1/4SE1/4
1138' FSL
1465' FEL
LAT-40.32211°N
LONG-104.79755°W
PDOP: 2.7
ELEV: 4703'

㉗

MONFORT GILCREST
K8-9
NE1/4SE1/4
2067' FSL
538' FEL
LAT-40.32462°N
LONG-104.79446°W
PDOP: 1.6
ELEV: 4700'

㉘

MONFORT GILCRST
K8-10
NW1/4SE1/4
1967' FSL
1755' FEL
LAT-40.32440°N
LONG-104.79882°W
PDOP: 1.6
ELEV: 4700'