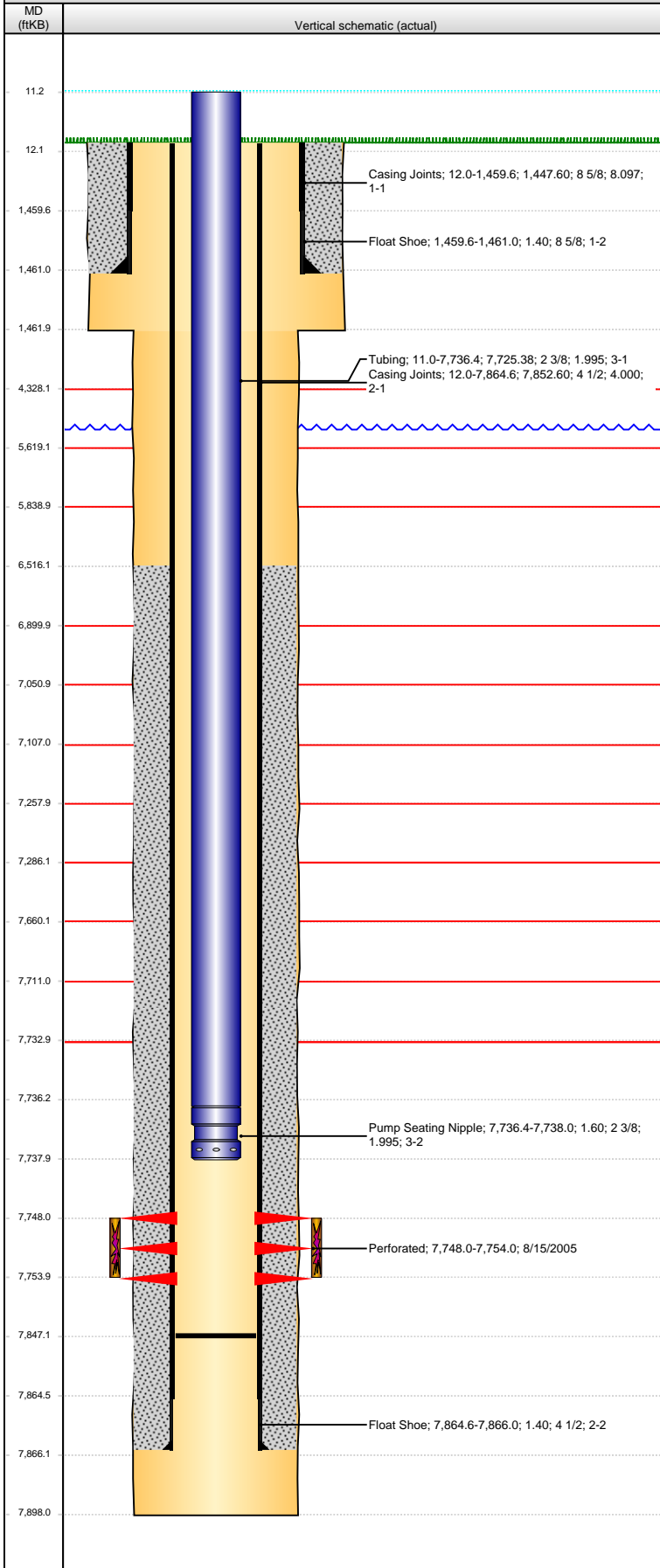


Well Name: CAVALIER 32-35

VERTICAL - ORIGINAL HOLE, 7/25/2013 9:56:48 AM



Well Header

API	Business Unit	District	Well Config
05-001-09544	WATTENBERG	15	VERTICAL
Original KB Elevation (ft)	KB - GL / MSL (ftKB)	Spud Date	P & A Date
5,222.00	12.00	7/28/2005	

Comment

Directions To Well

120th AVE & MANILLA RD, N 1/10, E INTO.

Congressional Location

Quarter 1	Quarter 2	Quarter 3	Quarter 4	Section	Township	Twnshp N...	Range	Rng E/W Dir
		SW	NE	35	1	S	64	W

Bottom Hole Location

North-South Distance (ft)	From N or S Line	East-West Distance (ft)	From E or W Line
---------------------------	------------------	-------------------------	------------------

Plug Back Total Depths

Date	Depth (ftKB)	Method	Com
8/3/2005	7,846.0	TAG	
6/2/2010	7,847.0	TAG	

Wellbore Sections

Section Des	Size (in)	Act Top (ftKB)	Act Btm (ftKB)
SURFACE	12 1/4	12.0	1,462.0
PRODUCTION	7 7/8	1,462.0	7,898.0

Zone Statuses

Zone Name	Status Date	Status	Job
J SAND	5/30/2006	PR	DRILLING/COMPLETION - ORIGINAL, 7/28/2005 00:00

Casing Strings

Surface Casing, 1,461.0ftKB

Casing Description	Run Date	OD (in)	Wt/Len (l...)	Grade	Top (ftKB)	MD (ftKB)
Surface Casing	7/28/2005	8 5/8	24.00		12.0	1,461.0

Production, 7,866.0ftKB

Casing Description	Run Date	OD (in)	Wt/Len (l...)	Grade	Top (ftKB)	MD (ftKB)
Production	8/4/2005	4 1/2	11.60	I-80	12.0	7,866.0

Cement

Description	Top Depth (ftKB)	Bottom Depth (ftKB)
SURFACE CASING CEMENT	12.0	1,461.0
PRODUCTION CASING CEMENT	6,516.0	7,866.0

Tubing Components

Item Des	OD (in)	Wt (lb/ft)	Grade	Jts	Len (ft)	Btm (ftKB)	Btm (TVD) (ftKB)
Tubing	2 3/8	4.70	J-55	253	7,725.38	7,736.4	
Pump Seating Nipple	2 3/8	4.70	J-55	1	1.60	7,738.0	

Perforation Data

Zone	Bnch/St g	Entered Shot Total	Top (ftKB)	Btm (ftKB)	Date
J SAND, ORIGINAL HOLE		24	7,748.00	7,754.00	8/15/2005

Stimulations & Treatments

Date	Zone	Primary Job Type
8/16/2005	J SAND, ORIGINAL HOLE	DRILLING/COMPLETION - ORIGINAL
Technical Result	Tech Result Details	Tech Result Note

Comment

Other In Hole

Run Date	Des	OD (in)	Top (ftKB)	Btm (ftKB)
----------	-----	---------	------------	------------

Logs

Date	Type	Top (ftKB)	Btm (ftKB)
8/4/2005	COMPENSATED DENSITY	1,461.0	7,898.0
8/12/2005	CEMENT BOND	6,400.0	7,851.0