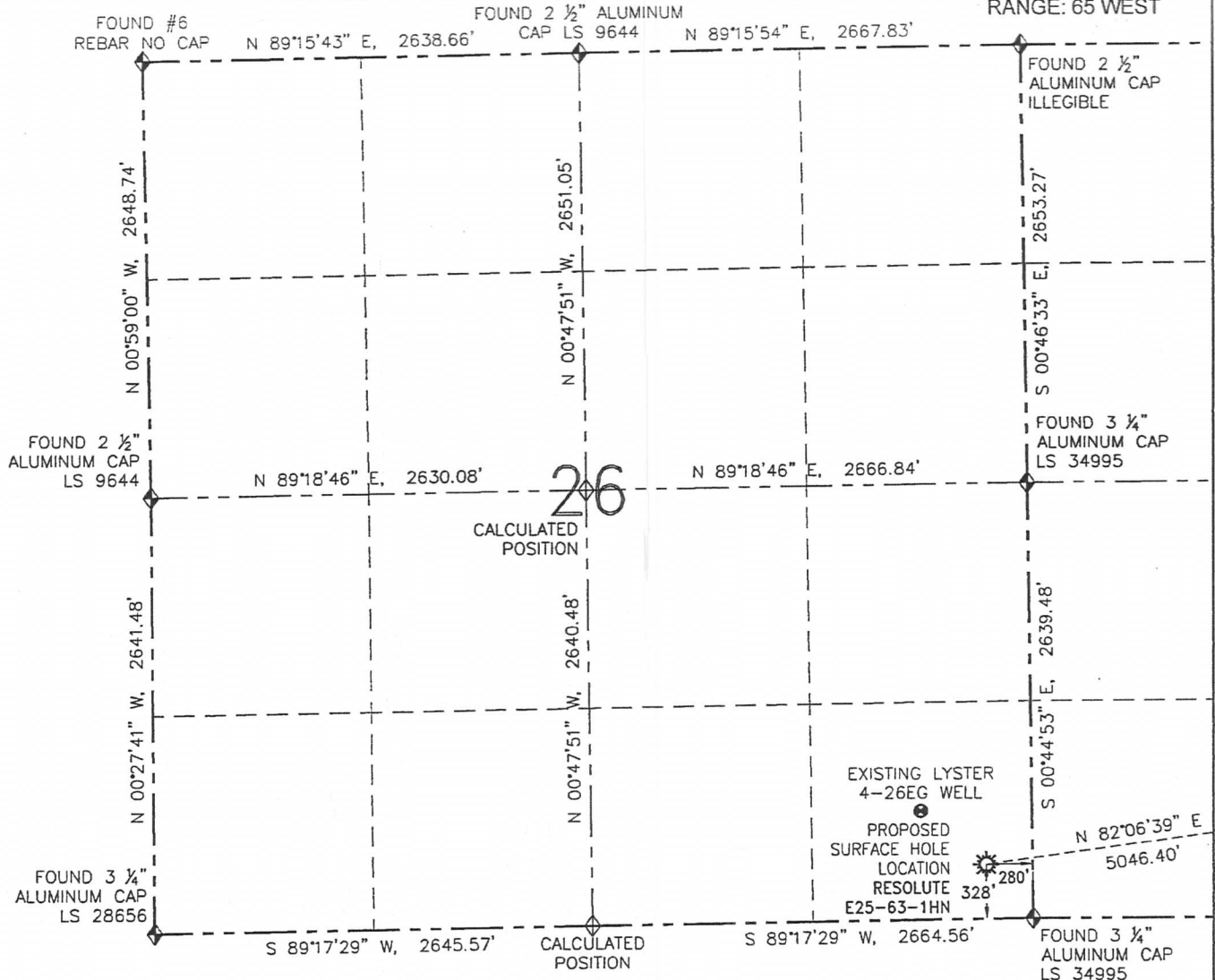


WELL LOCATION CERTIFICATE

RESOLUTE E25-63-1HN

THIS MAP DOES NOT REPRESENT A BOUNDARY SURVEY

SECTION: 26
TOWNSHIP: 6 NORTH
RANGE: 65 WEST



0 1000'
SCALE: 1" = 1000'

LEGEND

- ☀ PROPOSED WELL
- EXISTING WELL
- BOTTOM HOLE
- ◆ FOUND MONUMENT
- ◇ CALCULATED POSITION

SURFACE HOLE LOCATION (NAD 83)

LATITUDE: N 40.45059°
LONGITUDE: W 104.62175°
ELEVATION: 4676
PDOP: 2.0
1/4-1/4: SE SE
NEAREST PROPERTY LINE: 280' E

BOTTOM HOLE LOCATION

LATITUDE: N 40.45235°
LONGITUDE: W 104.60377°

NOTES:

1. BEARINGS ARE GRID BEARINGS OF THE COLORADO STATE PLANE COORDINATE SYSTEM, NORTH ZONE, NAD 83. THE LINEAL DIMENSIONS SHOWN HEREON ARE BASED UPON THE "U.S. SURVEY FOOT".
2. ELEVATIONS ARE BASED UPON NGS OPUS SOLUTION NAVD 88 DATUM COMPUTED USING GEOID09.
3. THE NEAREST EXISTING WELL IS: LYSER 4-26EG: 513' NW.
4. SEE LOCATION DRAWING FOR ALL IMPROVEMENTS WITHIN 400' OF THE OIL/GAS LOCATION.
5. SURFACE USE: CROPLAND.

IN ACCORDANCE WITH A REQUEST FROM MATT VERBIT-NOBLE ENERGY INC., R&R ENGINEERS-SURVEYORS, INC. HAS DETERMINED THE SURFACE HOLE LOCATION OF THE RESOLUTE E25-63-1HN WELL TO BE 328' FSL AND 280' FEL AS MEASURED AT (90) DEGREES FROM THE SECTION LINES OF SECTION 26, TOWNSHIP 6 NORTH, RANGE 65 WEST OF THE 6TH PRINCIPAL MERIDIAN, WELD COUNTY, COLORADO. THE BOTTOM HOLE LOCATION, AS PROVIDED BY THE CLIENT, IS TO BE 990' FSL AND 535' FEL OF SECTION 25, TOWNSHIP 6 NORTH, RANGE 65 WEST.

I HEREBY CERTIFY THAT THIS WELL LOCATION CERTIFICATE WAS PREPARED BY ME, OR UNDER MY DIRECT SUPERVISION, THAT THE FIELD WORK WAS COMPLETED ON 01/30/13, FOR AND ON BEHALF OF NOBLE ENERGY INC., THAT IT IS NOT A LAND SURVEY PLAT OR AN IMPROVEMENT SURVEY PLAT, AND THAT IT IS NOT TO BE RELIED UPON FOR ESTABLISHMENT OF FENCES, BUILDINGS, OR OTHER FUTURE IMPROVEMENT LINES.

PAGE 1 OF SHEET 1



ENGINEERS-SURVEYORS

FIELD DATE: 01/30/13

PLOT DATE: 03/12/13

DRAWN BY: MDW

JOB NO.: NE12383

SHEET NO.: 1 of 6

NOTICE:

ACCORDING TO COLORADO LAW, YOU MUST COMMENCE ANY LEGAL ACTION BASED UPON ANY DEFECT IN THIS W.L.C. WITHIN THREE YEARS AFTER YOU FIRST DISCOVER SUCH DEFECT. IN NO EVENT MAY ANY ACTION BASED UPON ANY DEFECT IN THIS W.L.C. BE COMMENCED MORE THAN TEN YEARS FROM THE DATE OF THE CERTIFICATION SHOWN HEREON (13-80-105 C.R.S.).



DAVID C. HOLMES, PLS 32828
FOR AND ON BEHALF OF R&R ENGINEERS-SURVEYORS, INC.

WELL LOCATION CERTIFICATE

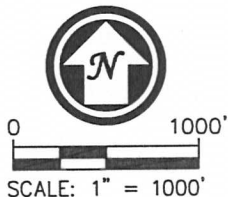
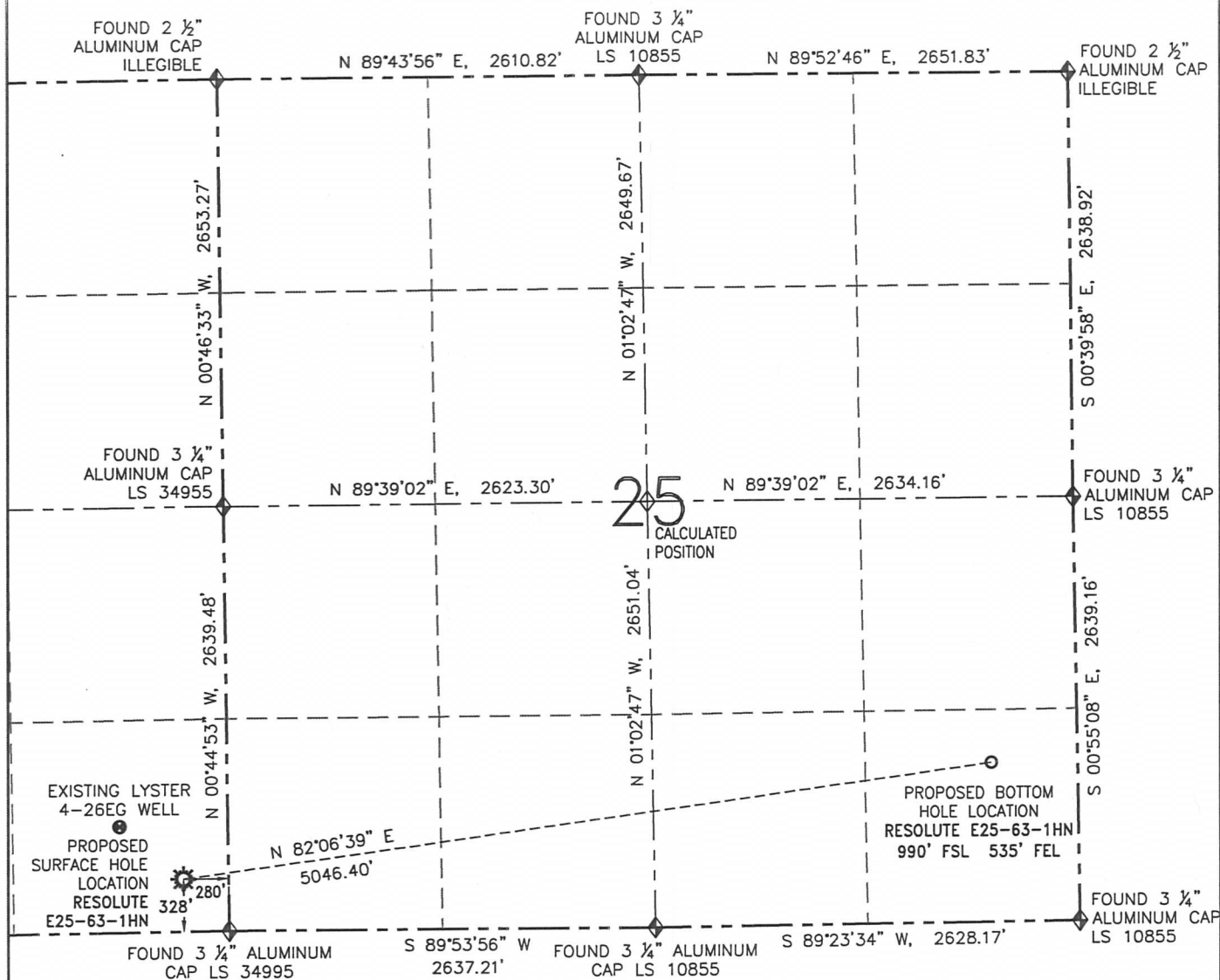
RESOLUTE E25-63-1HN

THIS MAP DOES NOT REPRESENT A BOUNDARY SURVEY

SHL-SECTION: 26

TOWNSHIP: 6 NORTH

RANGE: 65 WEST



SURFACE HOLE LOCATION (NAD 83)

LATITUDE: N 40.45059°
 LONGITUDE: W 104.62175°
 ELEVATION: 4676
 PDOP: 2.0
 1/4-1/4: SE SE
 NEAREST PROPERTY LINE: 280' E

BOTTOM HOLE LOCATION

LATITUDE: N 40.45235°
 LONGITUDE: W 104.60377°

PAGE 2 OF SHEET 1



FIELD DATE: 01/30/13
 PLOT DATE: 03/12/13
 DRAWN BY: MDW
 JOB NO.: NE12383
 SHEET NO.: 1 of 6

NOTICE:

ACCORDING TO COLORADO LAW, YOU MUST COMMENCE ANY LEGAL ACTION BASED UPON ANY DEFECT IN THIS W.L.C. WITHIN THREE YEARS AFTER YOU FIRST DISCOVER SUCH DEFECT. IN NO EVENT MAY ANY ACTION BASED UPON ANY DEFECT IN THIS W.L.C. BE COMMENCED MORE THAN TEN YEARS FROM THE DATE OF THE CERTIFICATION SHOWN HEREON (13-80-105 C.R.S.).

LEGEND

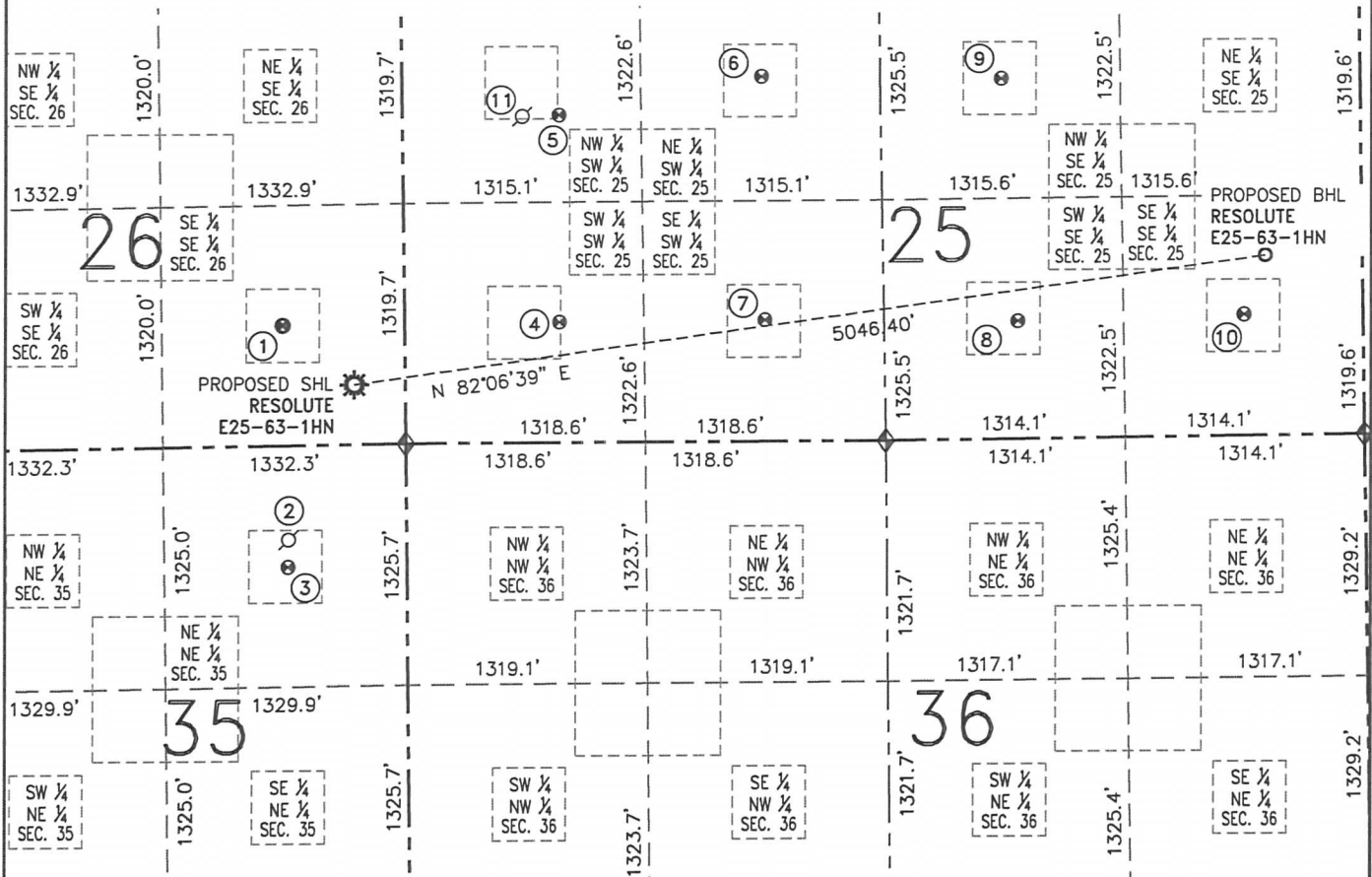
- PROPOSED WELL
- EXISTING WELL
- BOTTOM HOLE
- FOUND MONUMENT
- CALCULATED POSITION

SITE SKETCH

RESOLUTE E25-63-1HN

THIS MAP DOES NOT REPRESENT A BOUNDARY SURVEY

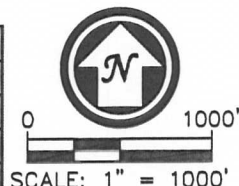
SECTION: 26
TOWNSHIP: 6 NORTH
RANGE: 65 WEST



- | | | | | |
|-------------------------------------------------------------------------------------------------------------------------|------------------------------------------------------------------------------------------------------------------------|-------------------------------------------------------------------------------------------------------------------|--------------------------------------------------------------------------------------------------------------------|----------------------------------------------------------------------------------------------------------------------|
| ① LYSTER 4-26EG
SE/SE SEC. 26
659' FSL
670' FEL
EL=4679
N 40.45149°
W 104.62316°
PDOP 2.2 | ② HOSHIKO 1-35
NE/NE SEC. 35
PER COGCC:
518' FNL
650' FEL
PLUGGED &
ABANDONED | ③ CEI-HOSHIKO NO.2
NE/NE SEC. 35
667' FNL
653' FEL
EL=4668
N 40.44785°
W 104.62309°
PDOP 2.0 | ④ NOFFSINGER E25-13
SW/SW SEC. 25
662' FSL
851' FWL
EL=4670
N 40.45149°
W 104.61769°
PDOP 1.5 | ⑤ NOFFSINGER E25-12X
NW/SW SEC. 25
1801' FSL
860' FWL
EL=4674
N 40.45461°
W 104.61767°
PDOP 1.6 |
| ⑥ NOFFSINGER
8-25EG
NE/SW SEC. 25
2009' FSL
1977' FWL
EL=4665
N 40.45516°
W 104.61366°
PDOP 1.6 | ⑦ NOFFSINGER
1-25EG
SE/SW SEC. 25
667' FSL
1981' FWL
EL=4655
N 40.45148°
W 104.61363°
PDOP 1.9 | ⑧ LITTLE WILL 9
SW/SE SEC. 25
647' FSL
1896' FEL
EL=4653
N 40.45141°
W 104.60865°
PDOP 1.9 | ⑨ LITTLE WILL 2
NW/SE SEC. 25
1984' FSL
1969' FEL
EL=4666
N 40.45508°
W 104.60894°
PDOP 1.6 | ⑩ LITTLE WILL 1
SE/SE SEC. 25
666' FSL
654' FEL
EL=4660
N 40.45146°
W 104.60419°
PDOP 2.2 |
| ⑪ NOFFSINGER
E25-12
NW/SW SEC. 25
PER COGCC:
1794' FSL
658' FWL
PLUGGED &
ABANDONED | | | | |



FIELD DATE: 01/30/13
PLOT DATE: 04/04/13
DRAWN BY: MDW
JOB NO.: NE12383
SHEET NO.: 2 of 6



NOTES:

- THIS SKETCH DOES NOT REPRESENT A BOUNDARY SURVEY.
- HORIZONTAL DATUM IS NAD 83.
- VERTICAL DATUM IS NAVD 88.

LEGEND

- PROPOSED WELL
- EXISTING WELL
- BOTTOM HOLE
- ABANDONED WELL
- FOUND MONUMENT
- CALCULATED POSITION