

WELL LOCATION CERTIFICATE

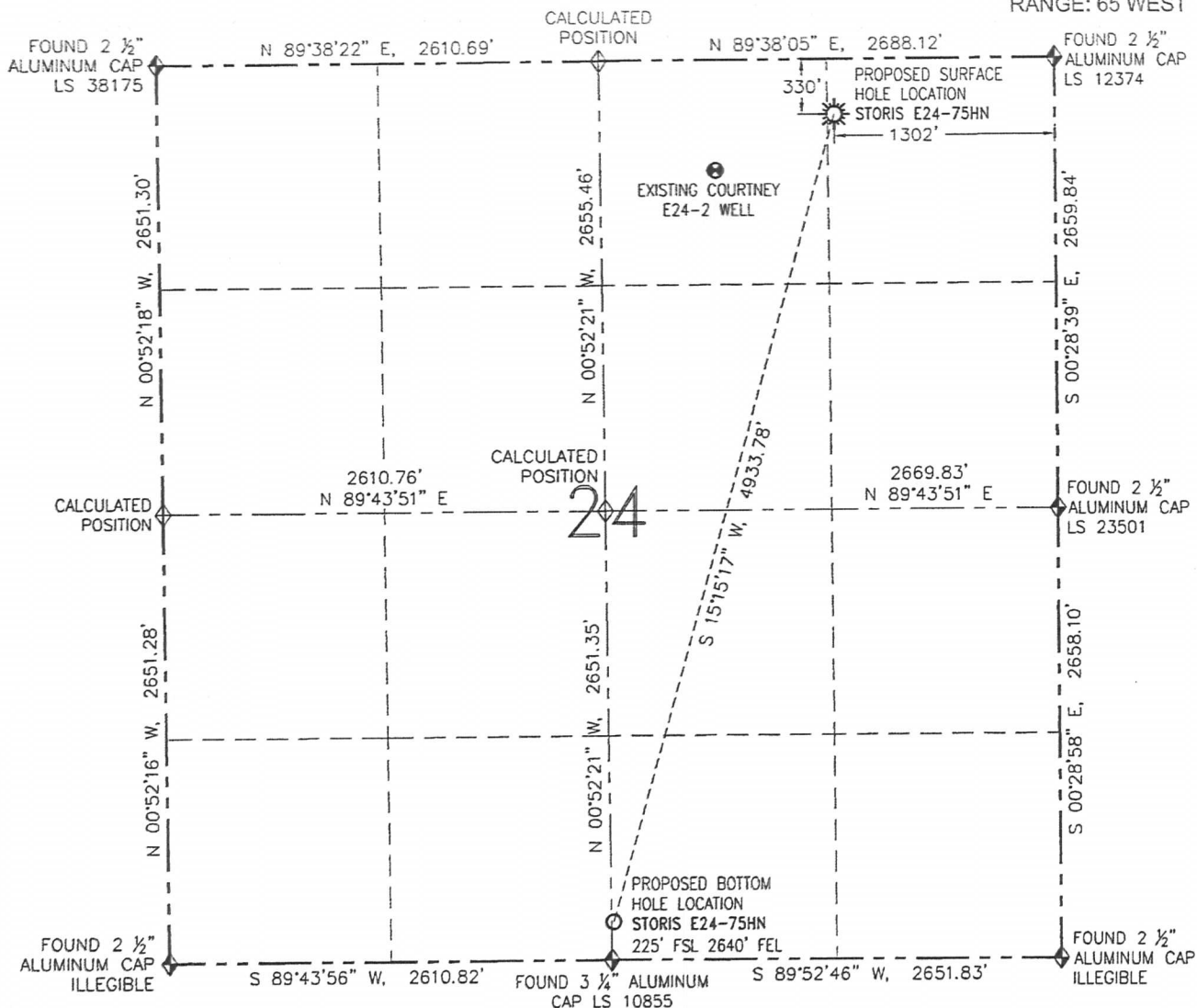
STORIS E24-75HN

THIS MAP DOES NOT REPRESENT A BOUNDARY SURVEY

SECTION: 24

TOWNSHIP: 6 NORTH

RANGE: 65 WEST



0 1000'
SCALE: 1" = 1000'

SURFACE HOLE LOCATION (NAD 83)

LATITUDE: N 40.47782°
LONGITUDE: W 104.60654°
ELEVATION: 4685
PDOP: 2.7
1/4-1/4: NE NE
NEAREST PROPERTY LINE: 41' W

BOTTOM HOLE LOCATION

LATITUDE: N 40.46479°
LONGITUDE: W 104.61138°

IN ACCORDANCE WITH A REQUEST FROM MIKE RODINE-NOBLE ENERGY INC., R&R ENGINEERS-SURVEYORS, INC. HAS DETERMINED THE SURFACE HOLE LOCATION OF THE STORIS E24-75HN WELL TO BE 330' FNL AND 1302' FEL AS MEASURED AT (90) DEGREES FROM THE SECTION LINES OF SECTION 24, TOWNSHIP 6 NORTH, RANGE 65 WEST OF THE 6TH PRINCIPAL MERIDIAN, WELD COUNTY, COLORADO. THE BOTTOM HOLE LOCATION, AS PROVIDED BY THE CLIENT, IS TO BE 225' FSL AND 2640' FEL OF SECTION 24, TOWNSHIP 6 NORTH, RANGE 65 WEST.

I HEREBY CERTIFY THAT THIS WELL LOCATION CERTIFICATE WAS PREPARED BY ME, OR UNDER MY DIRECT SUPERVISION, THAT THE FIELD WORK WAS COMPLETED ON 01/31/13, FOR AND ON BEHALF OF NOBLE ENERGY INC., THAT IT IS NOT A LAND SURVEY PLAT OR AN IMPROVEMENT SURVEY PLAT, AND THAT IT IS NOT TO BE RELIED UPON FOR ESTABLISHMENT OF FENCES, BUILDINGS, OR OTHER FUTURE IMPROVEMENT LINES.

LEGEND

- PROPOSED WELL
- EXISTING WELL
- BOTTOM HOLE
- FOUND MONUMENT
- CALCULATED POSITION

NOTES:

1. BEARINGS ARE GRID BEARINGS OF THE COLORADO STATE PLANE COORDINATE SYSTEM, NORTH ZONE, NAD 83. THE LINEAL DIMENSIONS SHOWN HEREON ARE BASED UPON THE "U.S. SURVEY FOOT".
2. ELEVATIONS ARE BASED UPON NGS OPUS SOLUTION NAVD 88 DATUM COMPUTED USING GEOID09.
3. THE NEAREST EXISTING WELL IS: COURTNEY E24-2 775' SW.
4. SEE LOCATION DRAWING FOR ALL IMPROVEMENTS WITHIN 400' OF THE OIL/GAS LOCATION.
5. SURFACE USE: CROPLAND.



FIELD DATE: 01/31/13
PLOT DATE: 03/08/13
DRAWN BY: KRS
JOB NO.: NE12383
SHEET NO.: 1 of 6

NOTICE:

ACCORDING TO COLORADO LAW, YOU MUST COMMENCE ANY LEGAL ACTION BASED UPON ANY DEFECT IN THIS W.L.C. WITHIN THREE YEARS AFTER YOU FIRST DISCOVER SUCH DEFECT. IN NO EVENT MAY ANY ACTION BASED UPON ANY DEFECT IN THIS W.L.C. BE COMMENCED MORE THAN TEN YEARS FROM THE DATE OF THE CERTIFICATION SHOWN HEREON (13-80-105 C.R.S.).



DAVID C. HOLMES, PLS 32828
FOR AND ON BEHALF OF R&R ENGINEERS-SURVEYORS, INC.

SITE SKETCH

STORIS E24-75HN

THIS MAP DOES NOT REPRESENT A BOUNDARY SURVEY

SECTION: 24

TOWNSHIP: 6 NORTH

RANGE: 65 WEST

① COURTNEY-BC E24-01
NE/NE SEC. 24
526' FNL
526' FEL
EL=4682
N 40.47727°
W 104.60376°
PDOP 2.5

② COURTNEY E24-2
NW/NE SEC. 24
657' FNL
2005' FEL
EL=4686
N 40.47693°
W 104.60907°
PDOP 2.6

③ OLE 21-24
NE/NW SEC. 24
464' FNL
1799' FWL
EL=4693
N 40.47747°
W 104.61443°
PDOP 2.0

④ COURTNEY E24-7
SW/NE SEC. 24
2016' FNL
1988' FEL
EL=4682
N 40.47320°
W 104.60902°
PDOP 1.6

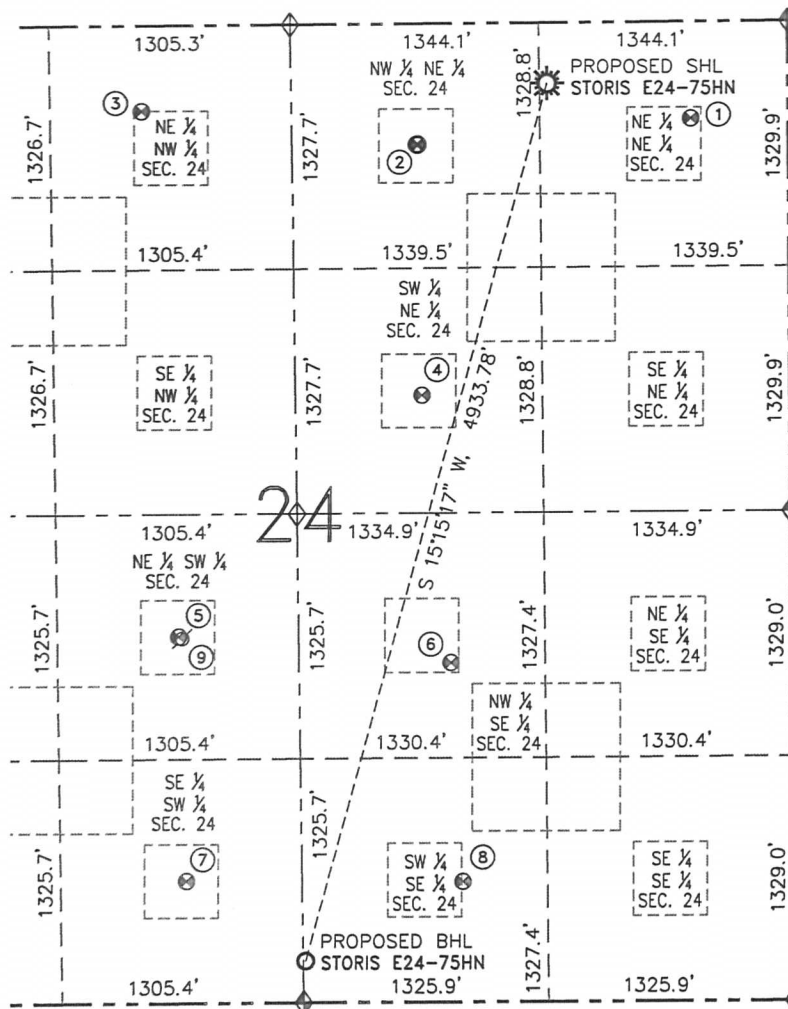
⑤ ANDERSON E24-11
NE/SW SEC. 24
1991' FSL
1962' FWL
EL=4685
N 40.46965°
W 104.61379°
PDOP 2.7

⑥ MILLER 33-24
NW/SE SEC. 24
1842' FSL
1842' FEL
EL=4679
N 40.46921°
W 104.60850°
PDOP 1.6

⑦ ANDERSON E24-14
SE/SW SEC. 24
663' FSL
1986' FWL
EL=4688
N 40.46600°
W 104.61368°
PDOP 2.1

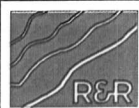
⑧ MILLER 34-24
SW/SE SEC. 24
653' FSL
1785' FEL
EL=4682
N 40.46595°
W 104.60831°
PDOP 1.5

⑨ ANDERSON EG1-24
NE/SW SEC. 24
PER COGCC:
1980' FSL
1980' FWL
DRILLED &
ABANDONED

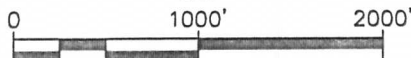


NOTES:

1. THIS SKETCH DOES NOT REPRESENT A BOUNDARY SURVEY.
2. HORIZONTAL DATUM IS NAD 83.
3. VERTICAL DATUM IS NAVD 88.



FIELD DATE: 01/31/13
PLOT DATE: 03/08/13
DRAWN BY: KRS
JOB NO.: NE12383
SHEET NO.: 2 of 6



SCALE: 1" = 1000'

LEGEND

- PROPOSED WELL
- EXISTING WELL
- BOTTOM HOLE
- ABANDONED WELL
- FOUND MONUMENT
- CALCULATED POSITION