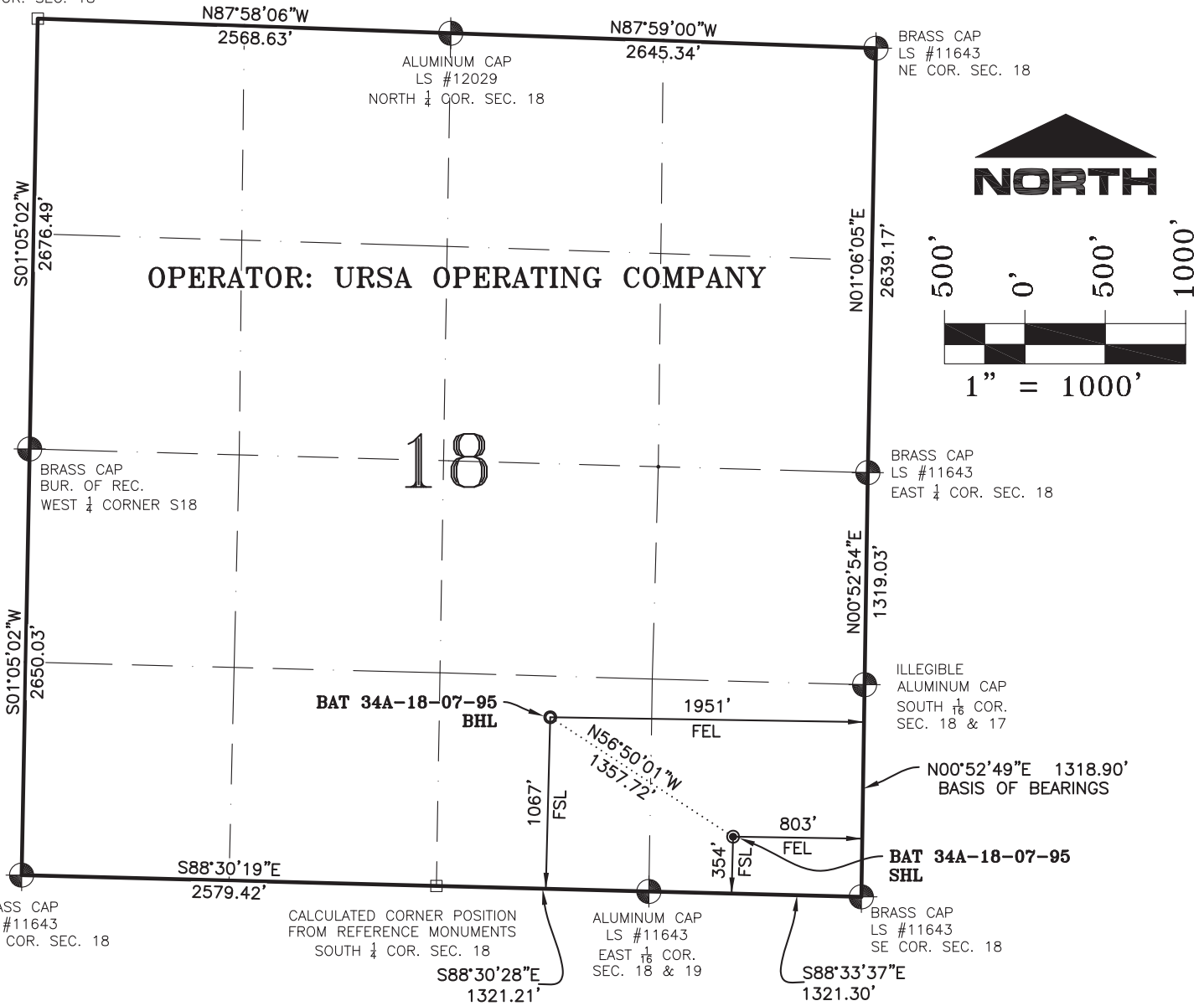


SECTION 18, T7S, R95W, 6th P.M.

CALCULATED POSITION
NW COR. SEC. 18



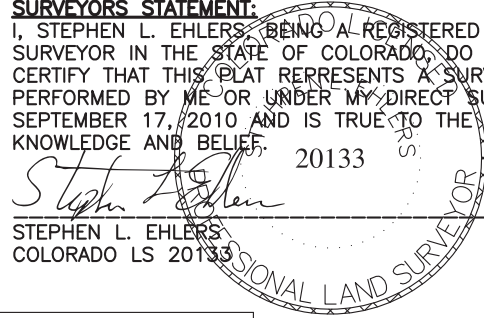
NOTES:

1. GEODETIC POSITIONS ARE SHOWN IN DECIMAL DEGREES.
2. UNITS OF LINEAR MEASUREMENT: U.S. SURVEY FOOT
3. ELEVATIONS ARE BASED ON GPS OBSERVATIONS USING GEOID 03, NAVD88.
4. ALL SURFACE (SHL) AND BOTTOM (BHL) HOLE LOCATIONS ARE MEASURED AT 90° ANGLES FROM SECTION LINES.
5. BASIS OF BEARING: N00°52'49"E BETWEEN FOUND MONUMENTS AS SHOWN HEREON.
6. EXISTING GROUND ELEVATION: 5441'. PROPOSED PAD ELEVATION: 5441.2'.
7. GPS OPERATOR: KYLE TESKY OBSERVED AN AVERAGE PDOP OF ≤ 3.0 FOR ALL SURVEY MEASUREMENTS DEPICTED ON THIS AND SUBSEQUENT SHEETS. ALL GPS OBSERVATIONS ARE IN COMPLIANCE WITH COGCC RULE NO. 215
8. SURFACE USE: AGRICULTURAL LANDS
9. USGS QUAD MAP: PARACHUTE

SURVEYORS STATEMENT:

I, STEPHEN L. EHLERS, BEING A REGISTERED LAND SURVEYOR IN THE STATE OF COLORADO, DO HEREBY CERTIFY THAT THIS PLAT REPRESENTS A SURVEY PERFORMED BY ME OR UNDER MY DIRECT SUPERVISION SEPTEMBER 17, 2010 AND IS TRUE TO THE BEST OF MY KNOWLEDGE AND BELIEF.

Stephen L. Ehlers
20133
16 JULY, 2013
STEPHEN L. EHLERS
COLORADO LS 20133
DATE



| WELL No. | SECTION LINES TIES | | NAD 83 | | NAD 27 | |
|--------------------|--------------------|-----------|------------|--------------|------------|--------------|
| BAT 34A-18-07-95 | FOOTAGES | FOOTAGES | LATITUDE | LONGITUDE | LATITUDE | LONGITUDE |
| SURFACE HOLE (SHL) | 354' FSL | 803' FEL | 39.431396° | -108.033175° | 39.431418° | -108.032545° |
| BOTTOM HOLE (BHL) | 1067' FSL | 1951' FEL | 39.433347° | -108.037269° | 39.433369° | -108.036639° |

| | | | | | |
|-----|---|-------------------|---|---------|------------------|
| | <p>118 West Sixth Street, Suite 200 Glenwood Springs, CO 81601 970.945.1004 www.sgm-inc.com</p> | Scale: 1" = 1000' | WELL LOCATION PLAT - URSA BAT 34A-18-07-95 | | |
| | | Sheet 1 of 1 | BHL LOCATED IN SW1/4SE1/4 SECTION 18, T. 7 S., R 95 W., 6TH P.M., GARFIELD COUNTY, CO | | |
| WLP | | Job# 2013-413.001 | Date: 7.15.13 | By: REB | File: MonRidUrsa |