

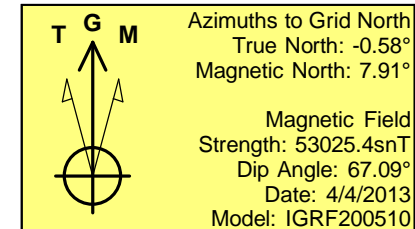
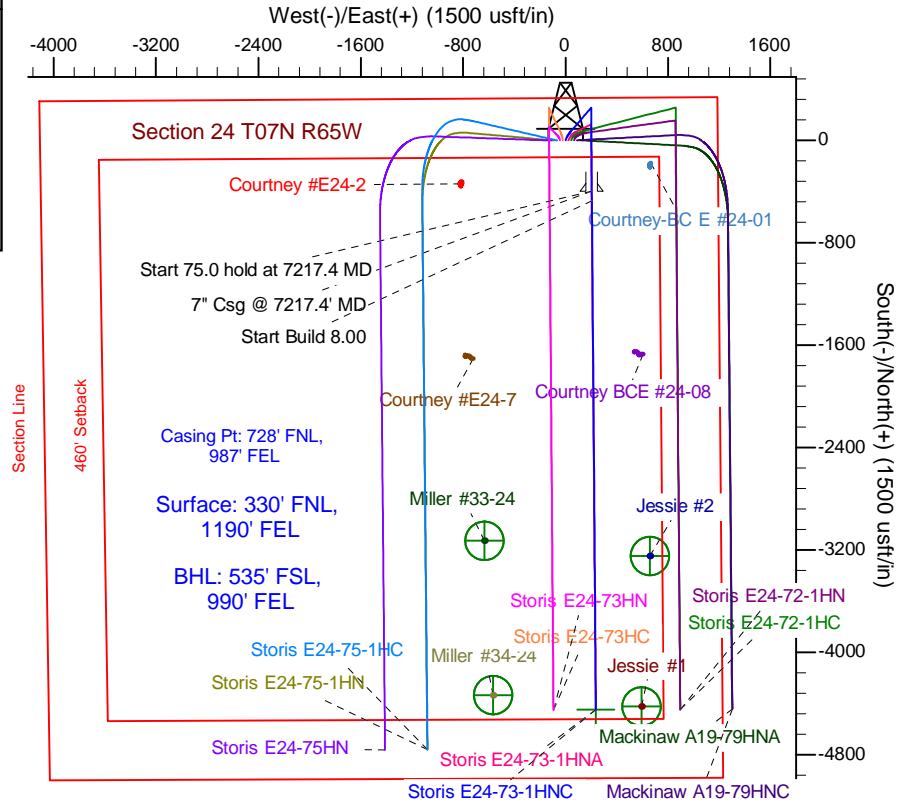
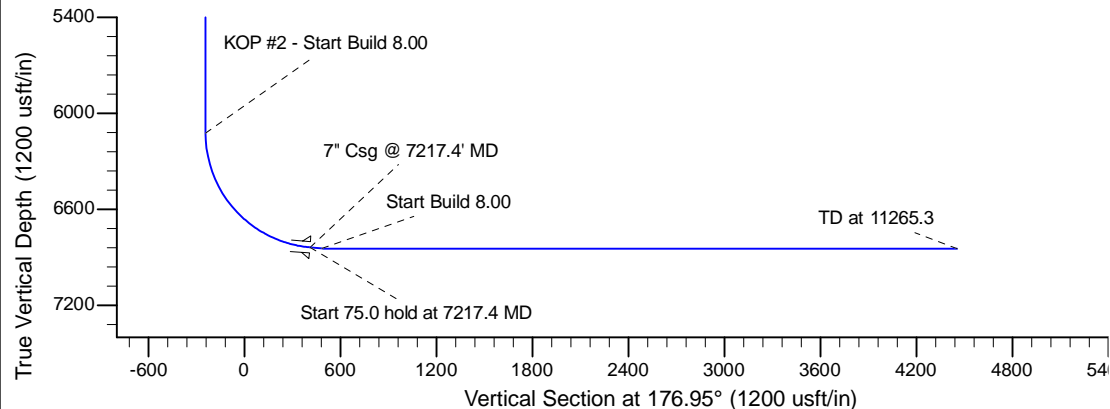
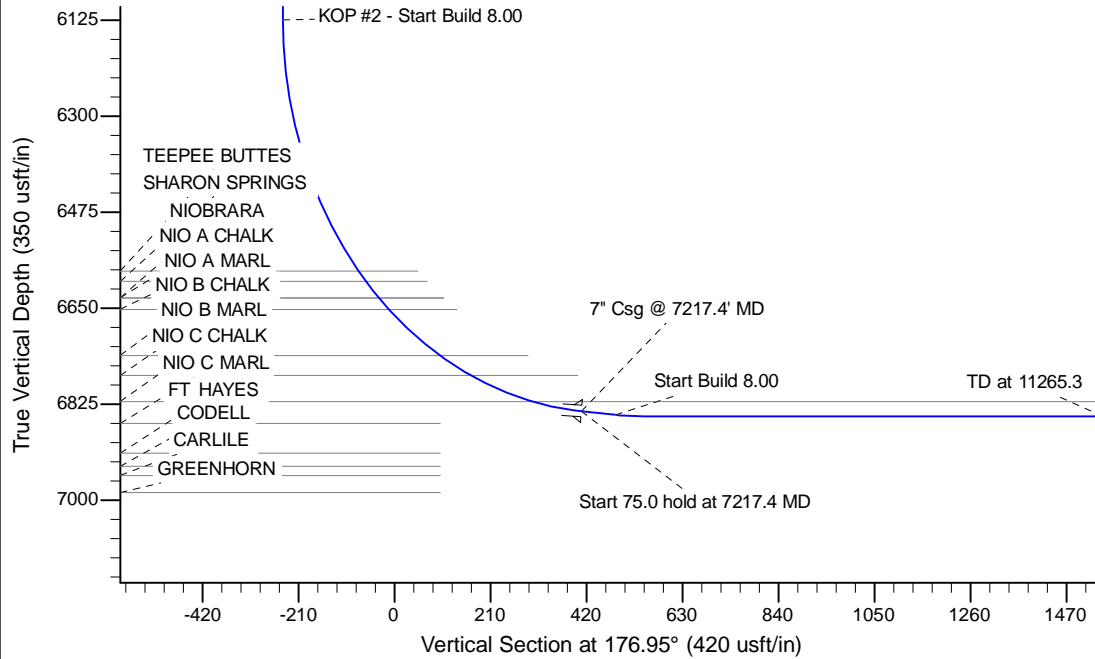
Project: Wattenberg Field  
Site: E (Sec.24-T06N-R65W) Weld County, CO  
Well: Storis E24-73-1HNC  
Wellbore: Original Drilling  
Design: APD - Rev 0

# Northern Region Drilling

Geodetic System: US State Plane 1983  
Datum: North American Datum 1983  
Ellipsoid: GRS 1980  
Zone: Colorado Northern Zone  
System Datum: Mean Sea Level

## SECTION DETAILS

Sec	MD	Inc	Azi	TVD	+N/-S	+E/-W	Dleg	TFace	Vsect	Target
1	0.0	0.00	0.00	0.0	0.0	0.0	0.00	0.00	0.0	
2	1900.0	0.00	0.00	1900.0	0.0	0.0	0.00	0.00	0.0	
3	2200.0	6.00	23.00	2199.5	14.4	6.1	2.00	23.00	-14.1	
4	2325.0	6.00	23.00	2323.8	26.5	11.2	0.00	0.00	-25.8	
5	2704.3	13.08	40.73	2697.7	77.3	47.0	2.00	31.46	-74.7	
6	3411.5	13.08	40.73	3386.5	198.6	151.5	0.00	0.00	-190.3	
7	4065.7	0.00	0.00	4035.0	255.0	200.0	2.00	180.00	-244.0	
8	6154.9	0.00	0.00	6124.3	255.0	200.0	0.00	0.00	-244.0	
9	7217.4	85.00	179.55	6837.7	-398.8	205.1	8.00	179.55	409.1	
10	7292.4	85.00	179.55	6844.3	-473.5	205.7	0.00	0.00	483.7	
11	7354.9	90.00	179.55	6847.0	-535.9	206.2	8.00	0.00	546.1	
12	11265.3	90.00	179.55	6847.0	-4446.1	236.8	0.00	0.00	4452.4	Storis E24-73-1HNC BHL 535'FSL, 990'FEL



WELL DETAILS: Storis E24-73-1HNC				
Ground Level: 4684.0				
0.0	0.0	Northing	Easting	Latitude
		1418163.49	3248659.28	40.477820
				Longitude
				-104.606140
Plan: APD - Rev 0 (Storis E24-73-1HNC/Original Drilling)				
Created By: Shailey Jewell		Date: 14:38, May 08 2013		
Checked: _____		Date: _____		
Reviewed: _____		Date: _____		
Approved: _____		Date: _____		