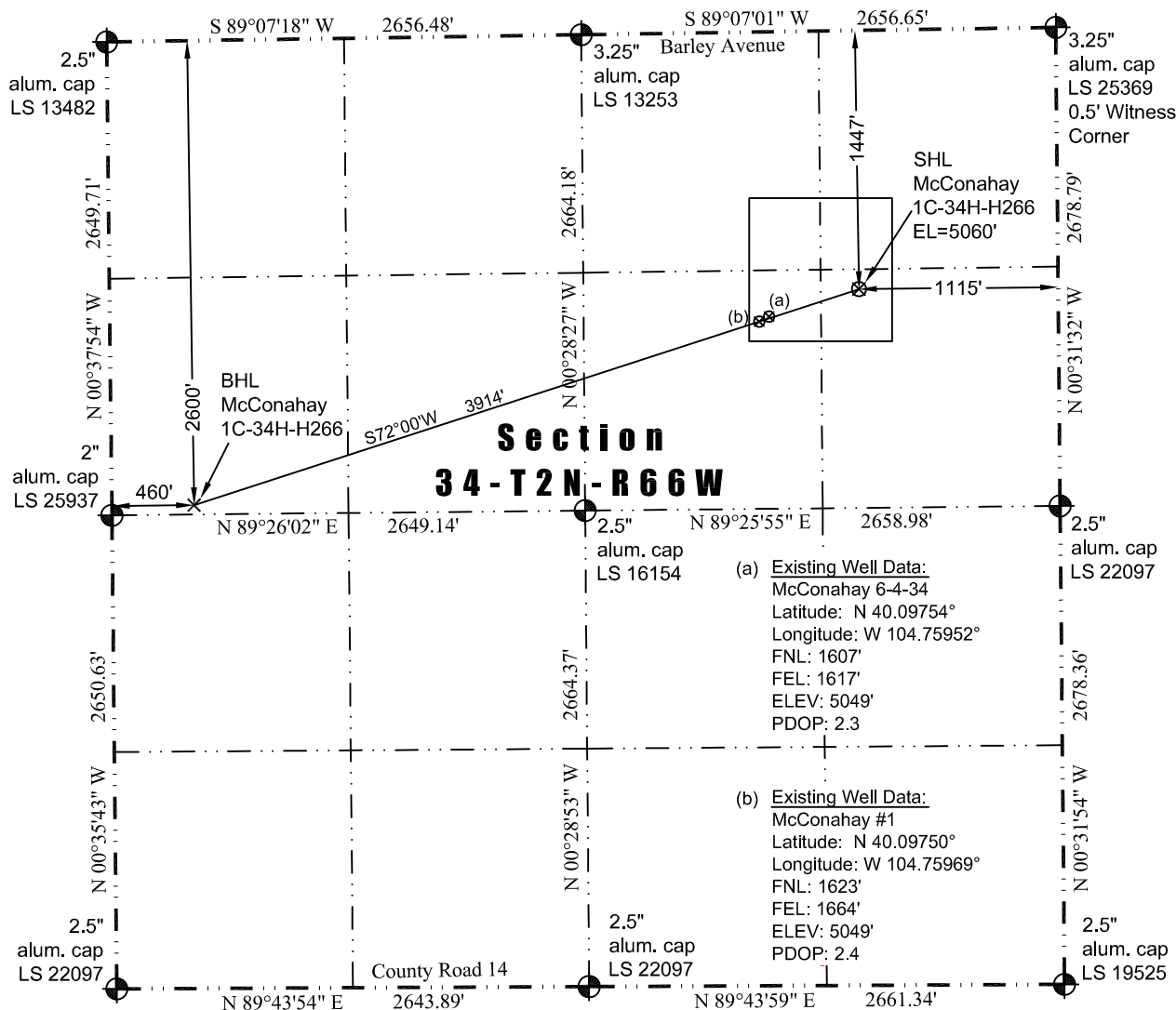


# JR Land Surveying, LLC

8114 Northstar Drive  
Windsor, Colorado 80528  
P. 970-576-4641

## WELL LOCATION CERTIFICATE

THIS MAP DOES NOT REPRESENT A BOUNDARY SURVEY



In accordance with a request from Jay Knutson of EnCana Oil & Gas (USA) Inc., JR Land Surveying, LLC has determined the location of the **McConahay 1C-34H-H266** well site to be SHL: 1447' FNL and 1115' FEL, (BHL: 2600' FNL and 460' FWL), as measured at ninety (90) degrees from the section lines of Section 34, Township 2 North, Range 66 West of the 6th Principal Meridian, Weld County Colorado.

### Proposed Surface Hole Data:

Latitude: N 40.09799° (BHL: 40.09475°)  
 Longitude: W 104.75773° (BHL: 104.77107°)  
 PDOP: 1.8

### Nearest:

Building: 1,186' southwest  
 Public Road: 1,436' north  
 Property Line: 214' west  
 Existing Well: McConahay 6-4-34, 528' southwest  
 Above Ground Utility: 1,144' east  
 Railroad: 14,166' west  
 Well Window: SHL is 185' inside

### Notes:

- 1) Bearings and distances based on NAD 83 Colorado North State Plane Coordinate. using RTK GPS observations taken 7/15/13 by operator John Rice.
- 2) Conversion factor to ground (1.000277319).
- 3) Elevations based on NAVD 88 GPS heights and Geoid 2003 corrections.
- 4) See Location Drawing for visible improvements within 500 feet of Pad Site.
- 5) The surface use is a cultivated field.

**NOTICE:** According to Colorado law you must commence any legal action based upon any defect in this W.L.C. within three years after you first discover such defect. In no event may any action based upon any defect in this W.L.C. be commenced more than ten years from this said date of the certification shown hereon.

I hereby certify that this Well Location Certificate was prepared by me or under my direct supervision on 7/15/2013 for and on behalf of EnCana Oil & Gas (USA) Inc. That it is not a Land Survey Plat or an Improvement Survey Plat and that it is not to be relied upon for establishment of fences, buildings, or other future improvement lines.

John Robert McConhee LS#38219  
 Well: McConahay 1C-34H-H266 WLC