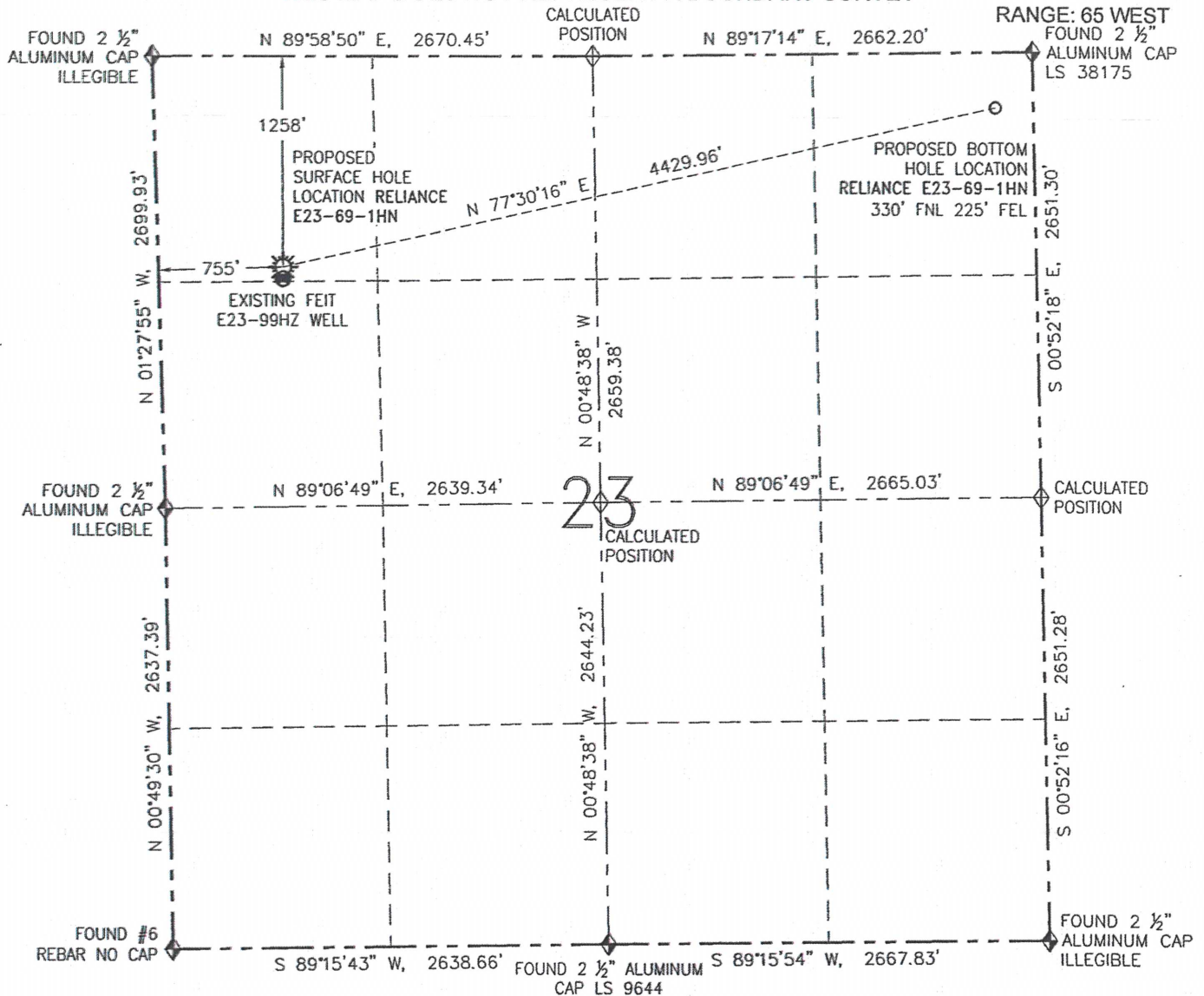


WELL LOCATION CERTIFICATE

RELiance E23-69-1HN

THIS MAP DOES NOT REPRESENT A BOUNDARY SURVEY

SECTION: 23
TOWNSHIP: 6 NORTH
RANGE: 65 WEST
FOUND 2 1/2" ALUMINUM CAP LS 38175



SURFACE HOLE LOCATION (NAD 83)

LATITUDE: N 40.47534°
LONGITUDE: W 104.63728°
ELEVATION: 4733
PDOP: 1.8
1/4-1/4: NW NW
NEAREST PROPERTY LINE: 755' W

BOTTOM HOLE LOCATION
LATITUDE: N 40.47786°
LONGITUDE: W 104.62171°

IN ACCORDANCE WITH A REQUEST FROM GREG WILSON-NOBLE ENERGY INC., R&R ENGINEERS-SURVEYORS, INC. HAS DETERMINED THE SURFACE HOLE LOCATION OF THE RELIANCE E23-69-1HN WELL TO BE 1258' FNL AND 755' FWL AS MEASURED AT (90) DEGREES FROM THE SECTION LINES OF SECTION 23, TOWNSHIP 6 NORTH, RANGE 65 WEST OF THE 6TH PRINCIPAL MERIDIAN, WELD COUNTY, COLORADO. THE BOTTOM HOLE LOCATION, AS PROVIDED BY THE CLIENT, IS TO BE 330' FNL AND 225' FEL OF SECTION 23, TOWNSHIP 6 NORTH, RANGE 65 WEST.

I HEREBY CERTIFY THAT THIS WELL LOCATION CERTIFICATE WAS PREPARED BY ME, OR UNDER MY DIRECT SUPERVISION, THAT THE FIELD WORK WAS COMPLETED ON 12/27/12, FOR AND ON BEHALF OF NOBLE ENERGY INC., THAT IT IS NOT A LAND SURVEY PLAT OR AN IMPROVEMENT SURVEY PLAT, AND THAT IT IS NOT TO BE RELIED UPON FOR ESTABLISHMENT OF FENCES, BUILDINGS, OR OTHER FUTURE IMPROVEMENT LINES.



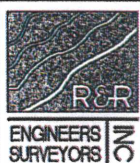
0 1000'
SCALE: 1" = 1000'

LEGEND

- PROPOSED WELL
- EXISTING WELL
- BOTTOM HOLE
- FOUND MONUMENT
- CALCULATED POSITION

NOTES:

1. BEARINGS ARE GRID BEARINGS OF THE COLORADO STATE PLANE COORDINATE SYSTEM, NORTH ZONE, NAD 83. THE LINEAL DIMENSIONS SHOWN HEREON ARE BASED UPON THE "U.S. SURVEY FOOT".
2. ELEVATIONS ARE BASED UPON NGS OPUS SOLUTION NAVD 88 DATUM COMPUTED USING GEOID09.
3. THE NEAREST EXISTING WELL IS: FEIT E23-99HZ 70' S.
4. SEE LOCATION DRAWING FOR ALL IMPROVEMENTS WITHIN 400' OF THE OIL/GAS LOCATION.
5. SURFACE USE: CROPLAND.



FIELD DATE: 12/27/12
PLOT DATE: 03/14/13
DRAWN BY: CJD
JOB NO.: NE12383
SHEET NO.: 1 of 3

NOTICE:

ACCORDING TO COLORADO LAW, YOU MUST COMMENCE ANY LEGAL ACTION BASED UPON ANY DEFECT IN THIS W.L.C. WITHIN THREE YEARS AFTER YOU FIRST DISCOVER SUCH DEFECT. IN NO EVENT MAY ANY ACTION BASED UPON ANY DEFECT IN THIS W.L.C. BE COMMENCED MORE THAN TEN YEARS FROM THE DATE OF THE CERTIFICATION SHOWN HEREON (13-80-105 C.R.S.).



DAVID C. HOLMES, PLS 32828
FOR AND ON BEHALF OF R&R ENGINEERS-SURVEYORS, INC.

SITE SKETCH

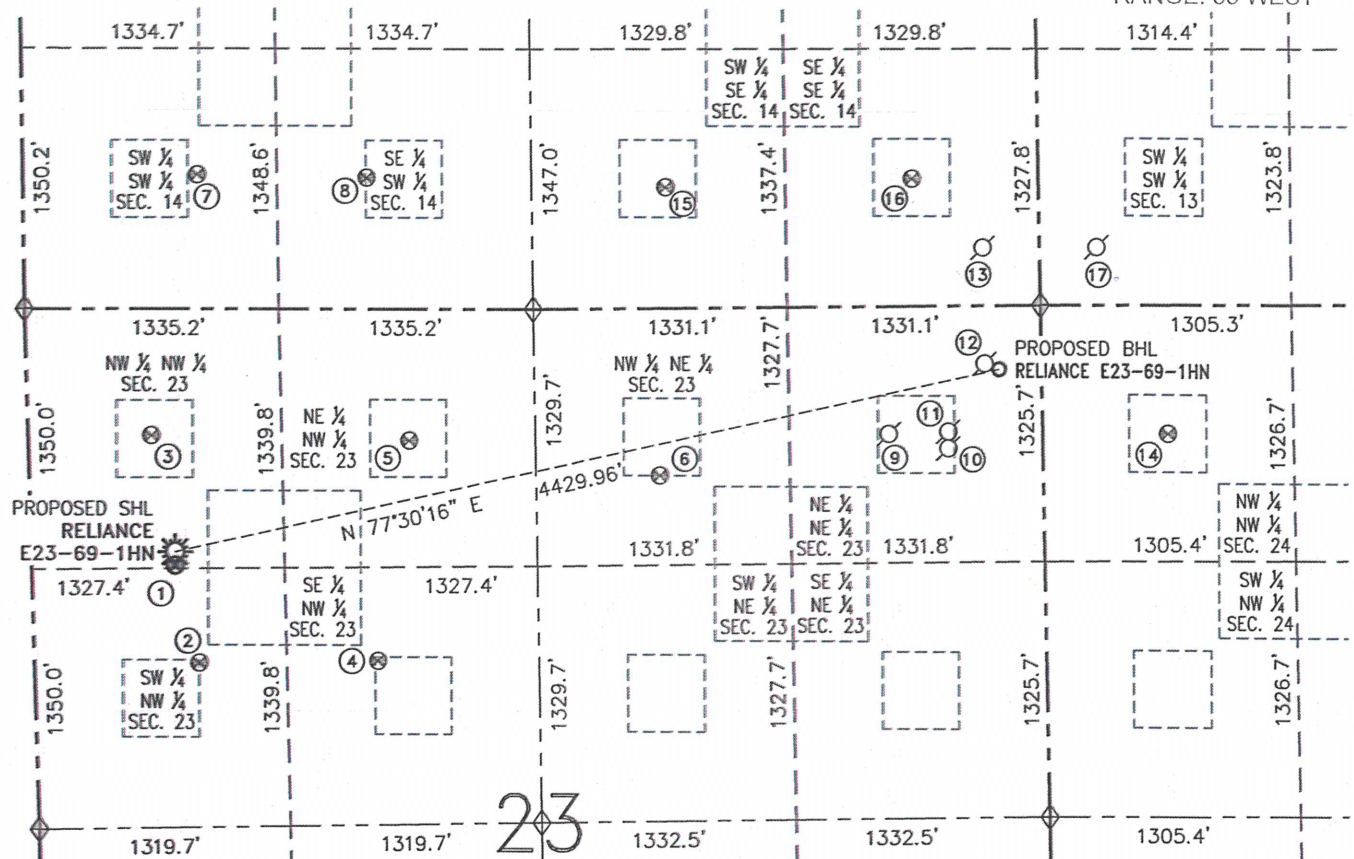
RELIANCE E23-69-1HN

THIS MAP DOES NOT REPRESENT A BOUNDARY SURVEY

SECTION: 23

TOWNSHIP: 6 NORTH

RANGE: 65 WEST



① FEIT E23-99HZ
NW/NW SEC. 23
1327' FNL
754' FWL
EL=4732
N 40.47515°
W 104.63728°
PDOP 2.6

② FEIT E23-5
SW/NW SEC. 23
1833' FNL
865' FWL
EL=4728
N 40.47376°
W 104.63685°
PDOP 1.8

③ FEIT 2-23EG
NW/NW SEC. 23
654' FNL
648' FWL
EL=4733
N 40.47700°
W 104.63770°
PDOP 1.6

④ FEIT E23-6
SE/NW SEC. 23
1821' FNL
1803' FWL
EL=4708
N 40.47377°
W 104.63348°
PDOP 1.7

⑤ FEIT E23-3
NE/NW SEC. 23
680' FNL
2001' FWL
EL=4706
N 40.47690°
W 104.63284°
PDOP 1.9

⑥ DINNER E23-2
NW/NE SEC. 23
865' FNL
2012' FEL
EL=4703
N 40.47638°
W 104.62812°
PDOP 2.0

⑦ DINNER 1
SW/SW SEC. 14
696' FSL
917' FWL
EL=4718
N 40.48070°
W 104.63677°
PDOP 2.8

⑧ DINNER 14-34
SE/SW SEC. 14
680' FSL
1806' FWL
EL=4712
N 40.48063°
W 104.63358°
PDOP 2.7

⑨ DINNER 23-1
NE/NE SEC. 23
PER COGCC:
660' FNL
810' FEL
DRILLED &
ABANDONED

⑩ CANNON NO.1-23X
NE/NE SEC. 23
PER COGCC:
719' FNL
500' FEL
PLUGGED &
ABANDONED

⑪ CANNON NO. 1-23
NE/NE SEC. 23
PER COGCC:
669' FNL
500' FEL
DRILLED &
ABANDONED

⑫ CANNON SURE
SHOT NO. 1-23P
NE/NE SEC. 23
PER COGCC:
300' FNL
300' FEL
DRILLED &
ABANDONED

⑬ SCHWISOW 5-14EG
SE/SE SEC. 14
PER COGCC:
300' FSL
300' FEL
PLUGGED &
ABANDONED

⑭ OLE 4-24
NW/NW SEC. 24
666' FNL
652' FWL
EL=4696
N 40.47693°
W 104.61855°
PDOP 2.0

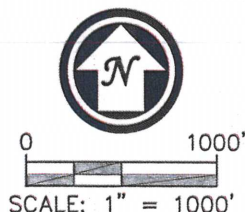
⑮ PALSER E14-15
SW/SE SEC. 14
626' FSL
1956' FEL
EL=4710
N 40.48047°
W 104.62795°
PDOP 1.5

NOTES:

1. THIS SKETCH DOES NOT REPRESENT A BOUNDARY SURVEY.
2. HORIZONTAL DATUM IS NAD 83.
3. VERTICAL DATUM IS NAVD 88.



FIELD DATE: 12/27/12
PLOT DATE: 03/15/13
DRAWN BY: CJD
JOB NO.: NE12383
SHEET NO.: 2 of 3



⑯ SCHWISOW E14-16
SE/SE SEC. 14
660' FSL
666' FEL
EL=4706
N 40.48057°
W 104.62331°
PDOP 1.9

⑰ DINNER 13-13
SW/SW SEC. 13
PER COGCC:
300' FSL
300' FWL
PLUGGED &
ABANDONED

- LEGEND**
- ☀ PROPOSED WELL
 - ⊗ EXISTING WELL
 - BOTTOM HOLE
 - ⊙ ABANDONED WELL
 - ◆ FOUND MONUMENT
 - ◆ CALCULATED POSITION