

## WELL LOCATION CERTIFICATE

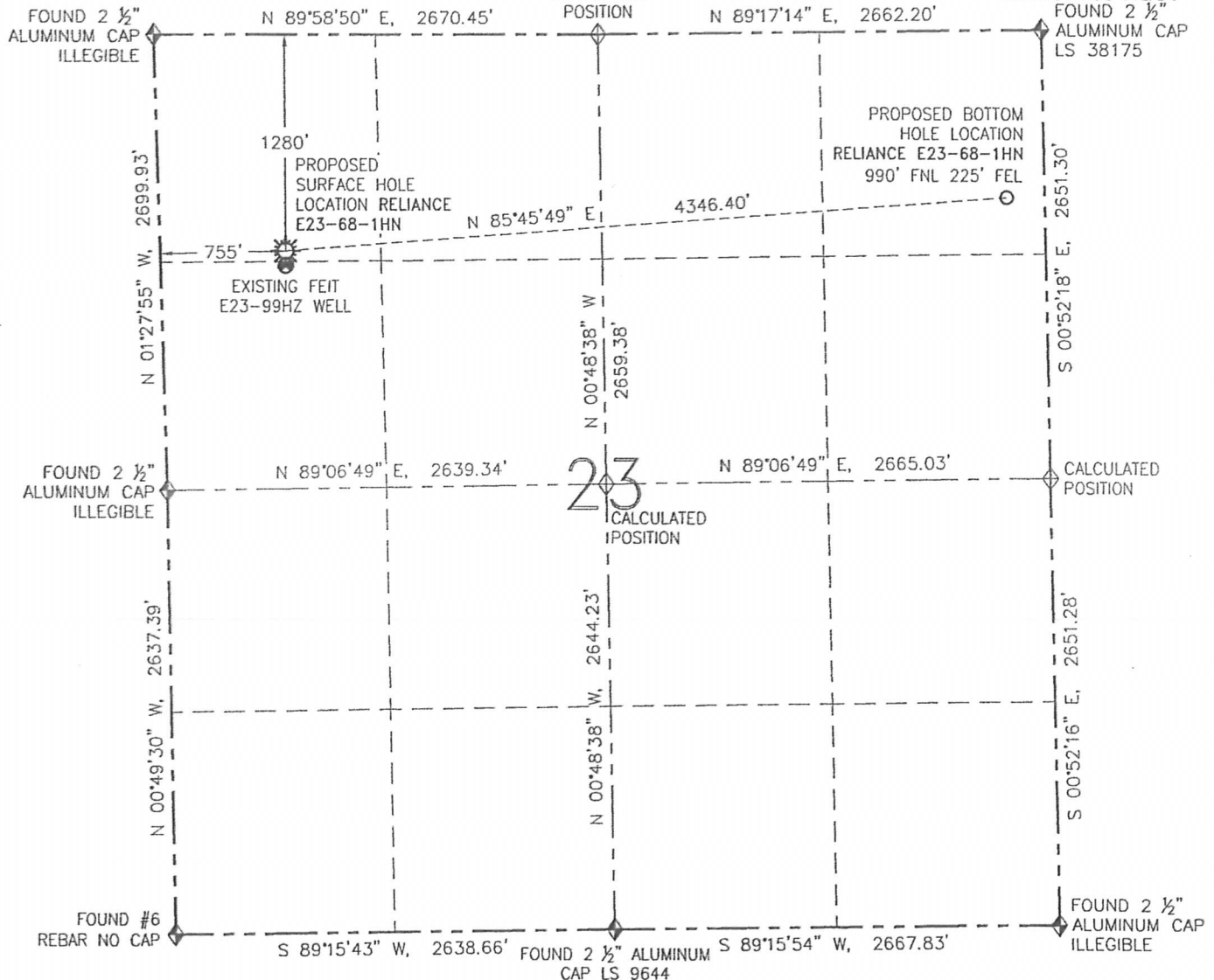
RELIANCE E23-68-1HN

THIS MAP DOES NOT REPRESENT A BOUNDARY SURVEY

SECTION: 23

TOWNSHIP: 6 NORTH

RANGE: 65 WEST

FOUND 2 1/2" ALUMINUM CAP  
LS 38175

## SURFACE HOLE LOCATION (NAD 83)

LATITUDE: N 40.47528°

LONGITUDE: W 104.63728°

ELEVATION: 4732

PDOP: 1.8

1/4-1/4: NW NW

NEAREST PROPERTY LINE: 755' W

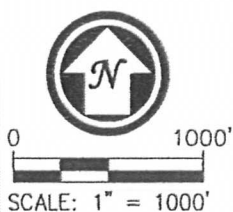
## BOTTOM HOLE LOCATION

LATITUDE: N 40.47605°

LONGITUDE: W 104.62169°

IN ACCORDANCE WITH A REQUEST FROM GREG WILSON-NOBLE ENERGY INC., R&R ENGINEERS-SURVEYORS, INC. HAS DETERMINED THE SURFACE HOLE LOCATION OF THE RELIANCE E23-68-1HN WELL TO BE 1280' FNL AND 755' FWL AS MEASURED AT (90) DEGREES FROM THE SECTION LINES OF SECTION 23, TOWNSHIP 6 NORTH, RANGE 65 WEST OF THE 6TH PRINCIPAL MERIDIAN, WELD COUNTY, COLORADO. THE BOTTOM HOLE LOCATION, AS PROVIDED BY THE CLIENT, IS TO BE 990' FNL AND 225' FEL OF SECTION 23, TOWNSHIP 6 NORTH, RANGE 65 WEST.

I HEREBY CERTIFY THAT THIS WELL LOCATION CERTIFICATE WAS PREPARED BY ME, OR UNDER MY DIRECT SUPERVISION, THAT THE FIELD WORK WAS COMPLETED ON 12/27/12, FOR AND ON BEHALF OF NOBLE ENERGY INC., THAT IT IS NOT A LAND SURVEY PLAT OR AN IMPROVEMENT SURVEY PLAT, AND THAT IT IS NOT TO BE RELIED UPON FOR ESTABLISHMENT OF FENCES, BUILDINGS, OR OTHER FUTURE IMPROVEMENT LINES.



## LEGEND

- ☼ PROPOSED WELL
- ⊙ EXISTING WELL
- BOTTOM HOLE
- ◆ FOUND MONUMENT
- ◇ CALCULATED POSITION

## NOTES:

1. BEARINGS ARE GRID BEARINGS OF THE COLORADO STATE PLANE COORDINATE SYSTEM, NORTH ZONE, NAD 83. THE LINEAL DIMENSIONS SHOWN HEREON ARE BASED UPON THE "U.S. SURVEY FOOT".
2. ELEVATIONS ARE BASED UPON NGS OPUS SOLUTION NAVD 88 DATUM COMPUTED USING GEOID09.
3. THE NEAREST EXISTING WELL IS: FEIT E23-99HZ 47' S.
4. SEE LOCATION DRAWING FOR ALL IMPROVEMENTS WITHIN 400' OF THE OIL/GAS LOCATION.
5. SURFACE USE: CROPLAND.



DAVID C. HOLMES, PLS 32828  
FOR AND ON BEHALF OF R&R ENGINEERS-SURVEYORS, INC.



FIELD DATE: 12/27/12

PLOT DATE: 03/14/13

DRAWN BY: CJD

JOB NO.: NE12383

SHEET NO.: 1 of 11

## NOTICE:

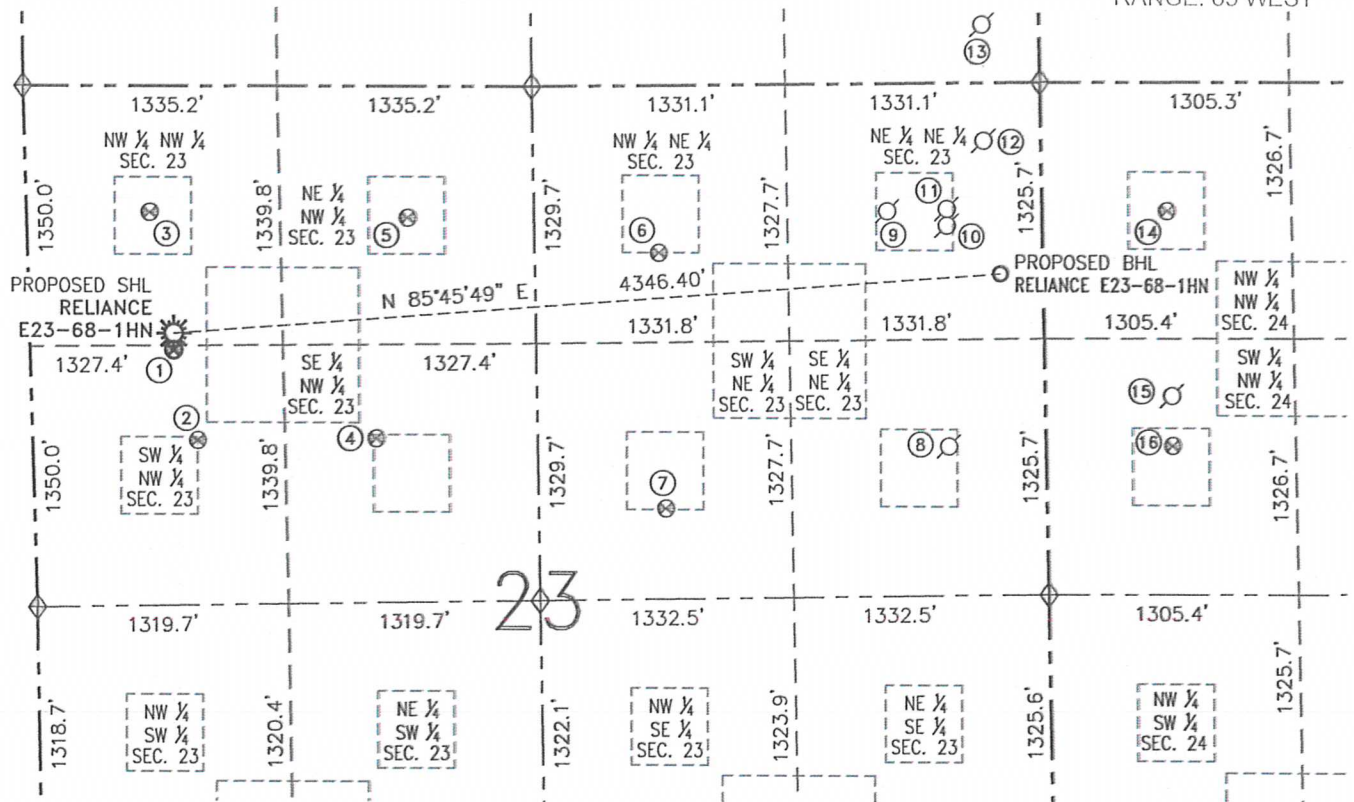
ACCORDING TO COLORADO LAW, YOU MUST COMMENCE ANY LEGAL ACTION BASED UPON ANY DEFECT IN THIS W.L.C. WITHIN THREE YEARS AFTER YOU FIRST DISCOVER SUCH DEFECT. IN NO EVENT MAY ANY ACTION BASED UPON ANY DEFECT IN THIS W.L.C. BE COMMENCED MORE THAN TEN YEARS FROM THE DATE OF THE CERTIFICATION SHOWN HEREON (13-80-105 C.R.S.).

# SITE SKETCH

RELIANCE E23-68-1HN

THIS MAP DOES NOT REPRESENT A BOUNDARY SURVEY

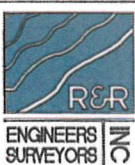
SECTION: 23  
TOWNSHIP: 6 NORTH  
RANGE: 65 WEST



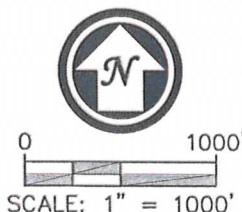
- ① FEIT E23-99HZ  
NW/NW SEC. 23  
1327' FNL  
754' FWL  
EL=4732  
N 40.47515°  
W 104.63728°  
PDOP 2.6
- ② FEIT E23-5  
SW/NW SEC. 23  
1833' FNL  
865' FWL  
EL=4728  
N 40.47376°  
W 104.63685°  
PDOP 1.8
- ③ FEIT 2-23EG  
NW/NW SEC. 23  
654' FNL  
648' FWL  
EL=4733  
N 40.47700°  
W 104.63770°  
PDOP 1.6
- ④ FEIT E23-6  
SE/NW SEC. 23  
1821' FNL  
1803' FWL  
EL=4708  
N 40.47377°  
W 104.63348°  
PDOP 1.7
- ⑤ FEIT E23-3  
NE/NW SEC. 23  
680' FNL  
2001' FWL  
EL=4706  
N 40.47690°  
W 104.63284°  
PDOP 1.9
- ⑥ DINNER E23-2  
NW/NE SEC. 23  
865' FNL  
2012' FEL  
EL=4703  
N 40.47638°  
W 104.62812°  
PDOP 2.0
- ⑦ DINNER E23-7  
SW/NE SEC. 23  
2188' FNL  
2000' FEL  
EL=4700  
N 40.47275°  
W 104.62805°  
PDOP 2.0
- ⑧ LI'L DARLIN'  
NO. 8-23  
SE/NE SEC. 23  
PER COGCC:  
1880' FNL  
510' FWL  
PLUGGED &  
ABANDONED
- ⑨ DINNER 23-1  
NE/NE SEC. 23  
PER COGCC:  
660' FNL  
810' FEL  
DRILLED &  
ABANDONED
- ⑩ CANNON NO.1-23X  
NE/NE SEC. 23  
PER COGCC:  
719' FNL  
500' FEL  
PLUGGED &  
ABANDONED
- ⑪ CANNON NO. 1-23  
NE/NE SEC. 23  
PER COGCC:  
669' FNL  
500' FEL  
DRILLED &  
ABANDONED
- ⑫ CANNON SURE  
SHOT NO. 1-23P  
NE/NE SEC. 23  
PER COGCC:  
300' FNL  
300' FEL  
DRILLED &  
ABANDONED
- ⑬ SCHWISOW 5-14EG  
SW/SW SEC. 14  
PER COGCC:  
300' FSL  
300' FEL  
PLUGGED &  
ABANDONED
- ⑭ OLE 4-24  
NW/NW SEC. 24  
666' FNL  
652' FWL  
EL=4696  
N 40.47693°  
W 104.61855°  
PDOP 2.0
- ⑮ LENA 24-6P  
SW/NW SEC. 24  
PER COGCC:  
1623' FNL  
660' FWL  
PLUGGED &  
ABANDONED
- ⑯ HERMAIN E24-5  
SW/NW SEC. 24  
1882' FNL  
660' FWL  
EL=4693  
N 40.47359°  
W 104.61850°  
PDOP 1.9

## NOTES:

1. THIS SKETCH DOES NOT REPRESENT A BOUNDARY SURVEY.
2. HORIZONTAL DATUM IS NAD 83.
3. VERTICAL DATUM IS NAVD 88.



FIELD DATE: 12/27/12  
PLOT DATE: 03/14/13  
DRAWN BY: CJD  
JOB NO.: NE12383  
SHEET NO.: 2 of 11



## LEGEND

- PROPOSED WELL
- EXISTING WELL
- BOTTOM HOLE
- ABANDONED WELL
- FOUND MONUMENT
- CALCULATED POSITION