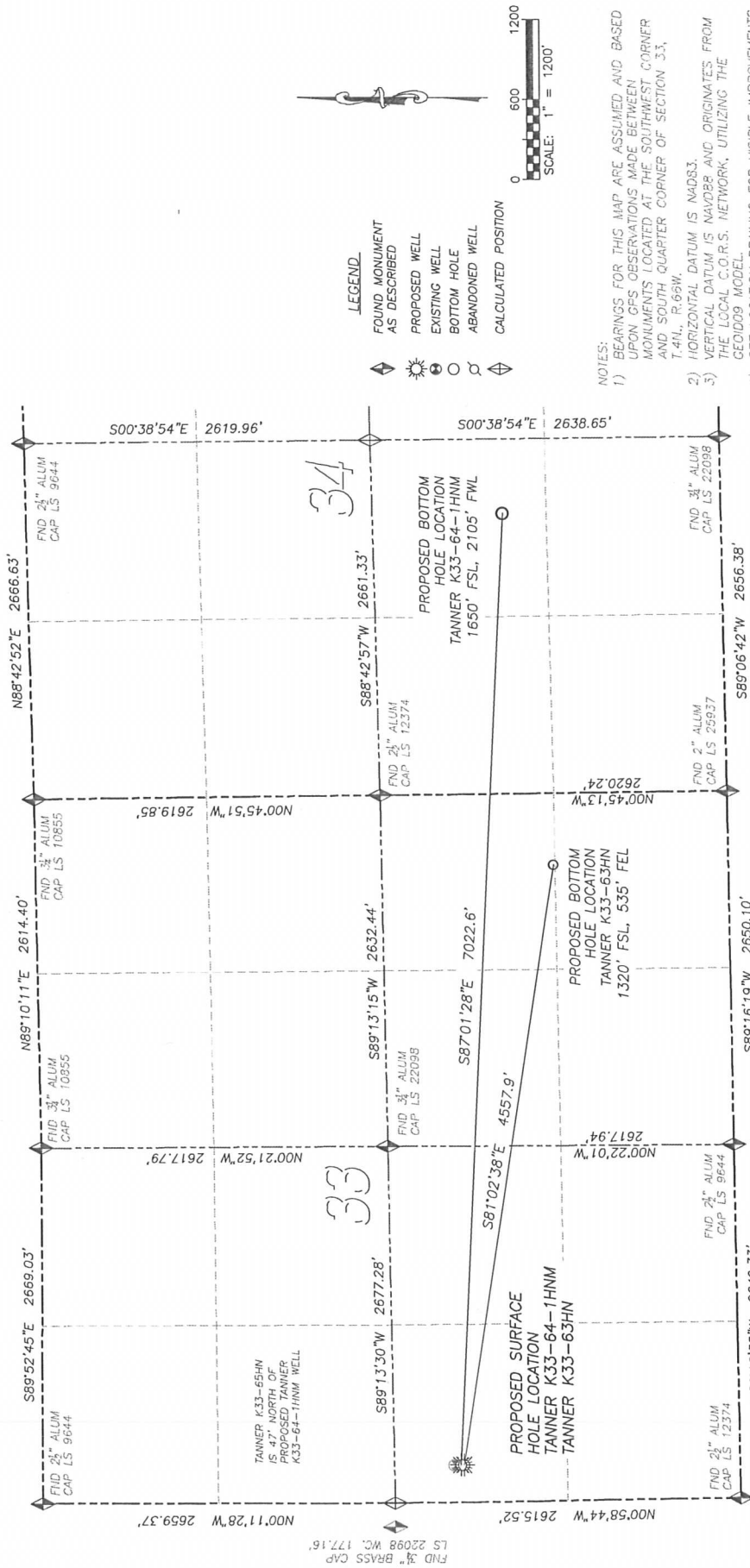
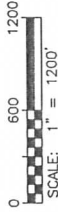


# MULTI-WELL PLAN DIRECTIONAL LAYOUT TANNER K33-64-1HNM & TANNER K33-63HN SECTION 33, TOWNSHIP 4 NORTH, RANGE 66 WEST OF THE 6TH PRINCIPAL MERIDIAN



- LEGEND.**
- ◆ FOUND MONUMENT AS DESCRIBED
  - ⊙ PROPOSED WELL
  - ⊙ EXISTING WELL
  - ⊙ BOTTOM HOLE
  - ⊙ ABANDONED WELL
  - ◇ CALCULATED POSITION



- NOTES:**
- 1) BEARINGS FOR THIS MAP ARE ASSUMED AND BASED UPON GPS OBSERVATIONS MADE BETWEEN MONUMENTS LOCATED AT THE SOUTHWEST CORNER AND SOUTH QUARTER CORNER OF SECTION 33, T.4N., R.66W.
  - 2) HORIZONTAL DATUM IS NAD83.
  - 3) VERTICAL DATUM IS NAVD88 AND ORIGINATES FROM THE LOCAL C.O.R.S. NETWORK, UTILIZING THE GEODID09 MODEL.
  - 4) SEE LOCATION DRAWING FOR VISIBLE IMPROVEMENTS WITHIN 400' OF PROPOSED DISTURBED AREA.
  - 5) SURFACE USE: AGRICULTURAL.

Well Name	Qtr - Qtr	Footage	Latitude	Longitude	Elevation	PDOP
SHL TANNER K33-64-1HNM	NW SW 33	2109' FSL	40.26669	-104.79094	4771	2.4
BHL TANNER K33-64-1HNM	NE SW 34	1650' FSL	40.26554	-104.76537		
SHL TANNER K33-63HN	NW SW 33	2087' FSL	40.26663	-104.79093	4771	2.4
BHL TANNER K33-63HN	NE SE 33	1320' FSL	40.26458	-104.77483		

NOTICE: According to Colorado law you MUST commence any legal action based upon any defect in this W.L.C. within three years after you first discover such defect. In no event may any action based upon any such defect in this W.L.C. be commenced more than ten years from the date of the certification shown hereon.

# MULTI-WELL PLAN LOCATION DRAWING TANNER K33-64-1HNM & TANNER K33-63HN

SECTION 33, TOWNSHIP 4 NORTH, RANGE 66 WEST OF THE 6TH PRINCIPAL MERIDIAN

