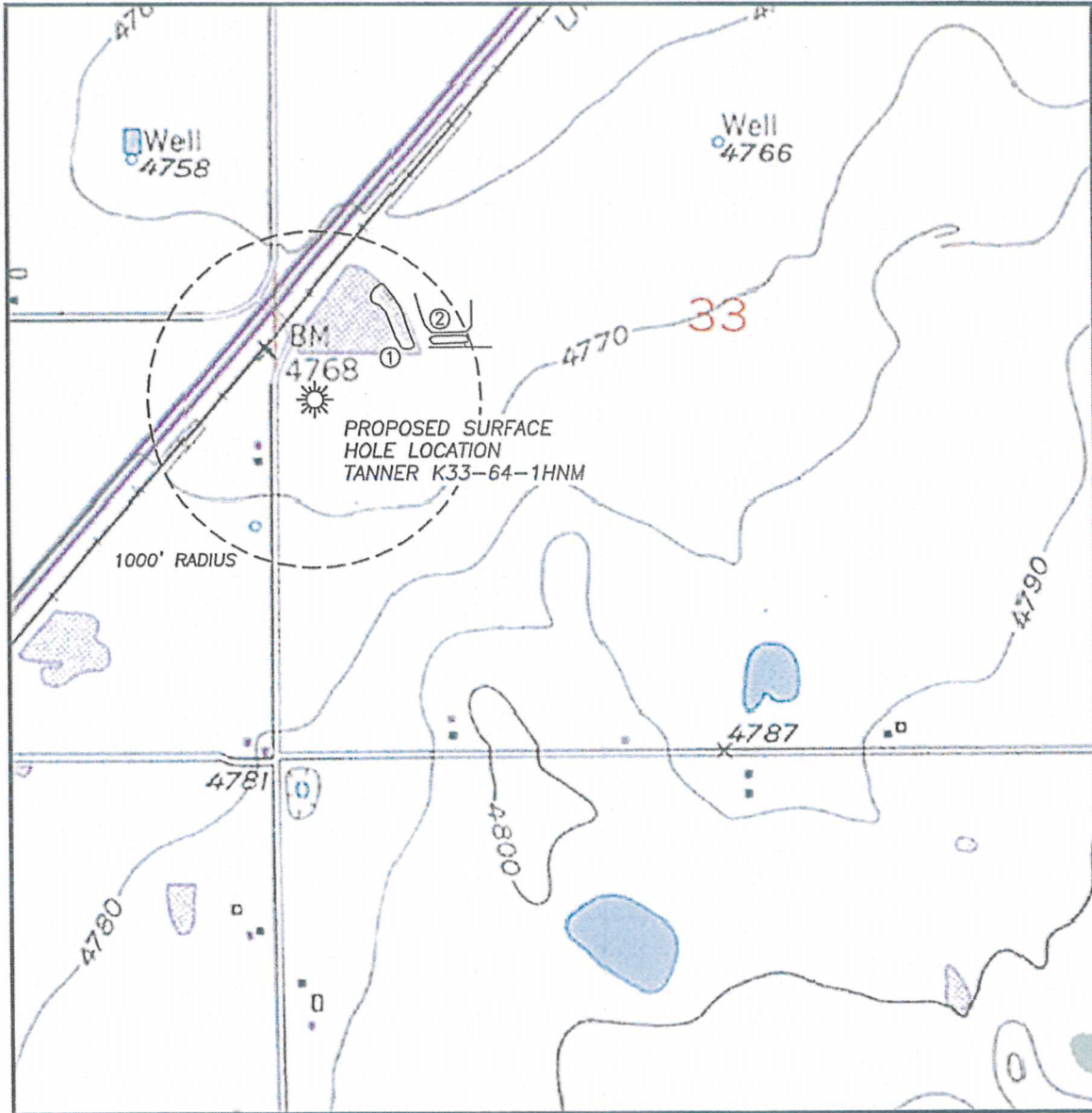


HYDROLOGY MAP TANNER K33-64-1HNM

SECTION 33, TOWNSHIP 4 NORTH, RANGE 66 WEST OF THE 6TH PRINCIPAL MERIDIAN



SURFACE WATER

- 1. IRR. POND: 605'± NE
- 2. IRR. PONDS: 780'± NE

