

Condor Energy

Well Name: **Wickstrom 17-1H**

Surface Location: Wickstrom 17-1H Pad Sec.17-T6N-R60W
North American Datum 1983 , US State Plane 1983 , Colorado Northern Zone

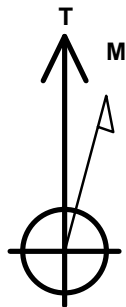
Ground Elevation: 4671.3

+N/-S	+E/-W	Northing	Easting	Latitude	Longitude	Slot
0.0	0.0	1421413.29	3383432.79	40.482000	-104.121550	

Original Well Elev WELL @ 4683.8ft (Original Well Elev)

WELLBORE TARGET DETAILS

Name	TVD	+N/-S	+E/-W	Shape
HARDLINE 600' BHL	1.0	9619.7	-1147.3	Polygon
HARDLINE 600' SHL	1.0	290.0	600.0	Polygon
SECTION LINE	1.0	-310.0	600.0	Polygon
SHL 310'FSL & 1740'FWL, SEC.17	1.0	0.0	0.0	Point
BHL 660'FNL & 660'FWL, SEC.8	6030.0	9559.8	-1087.3	Point
Landing Pt. 660'FSL & 660'FWL	6030.0	360.7	-1082.1	Point



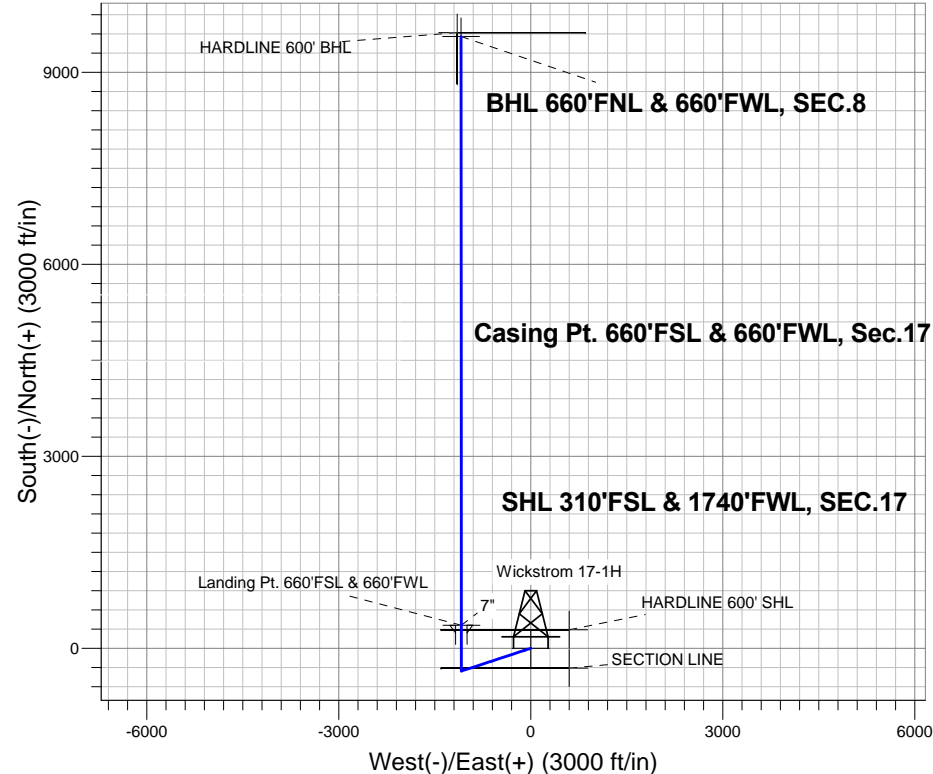
Azimuths to True North
Magnetic North: 8.24°

Magnetic Field
Strength: 53019.9snT
Dip Angle: 67.15°
Date: 7/24/2013
Model: IGRF2010

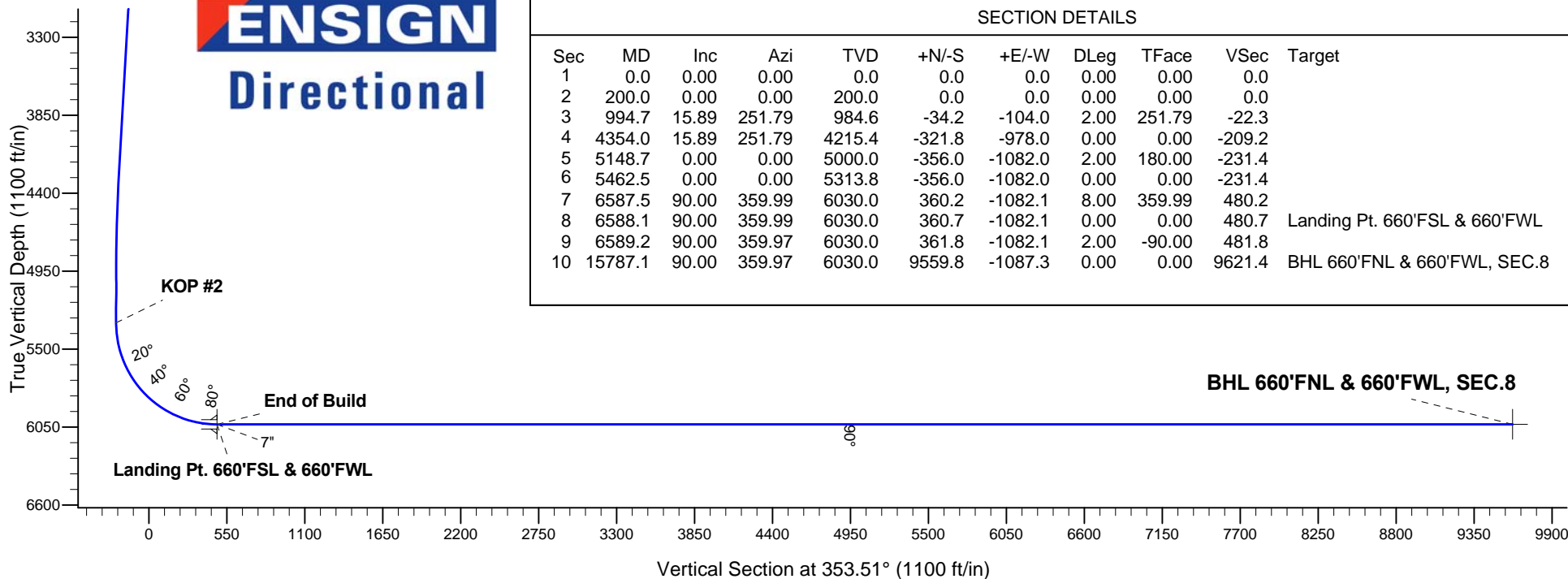
Wickstrom 17-1H Pad Sec.17-T6N-R60W
Wickstrom 17-1H
Plan #2 (7-23-13)
8:58, July 24 2013

ANNOTATIONS

TVD	MD	Annotation
200.0	200.0	KOP #1
5313.8	5462.5	KOP #2
6030.0	6588.1	End of Build



ENSIGN Directional



SECTION DETAILS

Sec	MD	Inc	Azi	TVD	+N/-S	+E/-W	DLeg	TFace	VSec	Target
1	0.0	0.00	0.00	0.0	0.0	0.0	0.00	0.00	0.0	
2	200.0	0.00	0.00	200.0	0.0	0.0	0.00	0.00	0.0	
3	994.7	15.89	251.79	984.6	-34.2	-104.0	2.00	251.79	-22.3	
4	4354.0	15.89	251.79	4215.4	-321.8	-978.0	0.00	0.00	-209.2	
5	5148.7	0.00	0.00	5000.0	-356.0	-1082.0	2.00	180.00	-231.4	
6	5462.5	0.00	0.00	5313.8	-356.0	-1082.0	0.00	0.00	-231.4	
7	6587.5	90.00	359.99	6030.0	360.2	-1082.1	8.00	359.99	480.2	
8	6588.1	90.00	359.99	6030.0	360.7	-1082.1	0.00	0.00	480.7	Landing Pt. 660'FSL & 660'FWL
9	6589.2	90.00	359.97	6030.0	361.8	-1082.1	2.00	-90.00	481.8	
10	15787.1	90.00	359.97	6030.0	9559.8	-1087.3	0.00	0.00	9621.4	BHL 660'FNL & 660'FWL, SEC.8



Condor Energy

SEC.17-T6N-R60W

Wickstrom 17-1H Pad Sec.17-T6N-R60W

Wickstrom 17-1H

Wellbore #1

Plan: Plan #2 (7-23-13)

Standard Planning Report

24 July, 2013

Plan Sections										
Measured Depth (ft)	Inclination (°)	Azimuth (°)	Vertical Depth (ft)	+N/-S (ft)	+E/-W (ft)	Dogleg Rate (°/100ft)	Build Rate (°/100ft)	Turn Rate (°/100ft)	TFO (°)	Target
0.0	0.00	0.00	0.0	0.0	0.0	0.00	0.00	0.00	0.00	
200.0	0.00	0.00	200.0	0.0	0.0	0.00	0.00	0.00	0.00	
994.7	15.89	251.79	984.6	-34.2	-104.0	2.00	2.00	0.00	251.79	
4,354.0	15.89	251.79	4,215.4	-321.8	-978.0	0.00	0.00	0.00	0.00	
5,148.7	0.00	0.00	5,000.0	-356.0	-1,082.0	2.00	-2.00	0.00	180.00	
5,462.5	0.00	0.00	5,313.8	-356.0	-1,082.0	0.00	0.00	0.00	0.00	
6,587.5	90.00	359.99	6,030.0	360.2	-1,082.1	8.00	8.00	0.00	359.99	
6,588.1	90.00	359.99	6,030.0	360.7	-1,082.1	0.00	0.00	0.00	0.00	Landing Pt. 660'FSI
6,589.2	90.00	359.97	6,030.0	361.8	-1,082.1	2.00	0.00	-2.00	-90.00	
15,787.1	90.00	359.97	6,030.0	9,559.8	-1,087.3	0.00	0.00	0.00	0.00	BHL 660'FNL & 660'FSI

Database:	Landmark	Local Co-ordinate Reference:	Well Wickstrom 17-1H
Company:	Condor Energy	TVD Reference:	WELL @ 4683.8ft (Original Well Elev)
Project:	SEC.17-T6N-R60W	MD Reference:	WELL @ 4683.8ft (Original Well Elev)
Site:	Wickstrom 17-1H Pad Sec.17-T6N-R60W	North Reference:	True
Well:	Wickstrom 17-1H	Survey Calculation Method:	Minimum Curvature
Wellbore:	Wellbore #1		
Design:	Plan #2 (7-23-13)		

Planned Survey									
Measured Depth (ft)	Inclination (°)	Azimuth (°)	Vertical Depth (ft)	+N/-S (ft)	+E/-W (ft)	Vertical Section (ft)	Dogleg Rate (°/100ft)	Build Rate (°/100ft)	Turn Rate (°/100ft)
0.0	0.00	0.00	0.0	0.0	0.0	0.0	0.00	0.00	0.00
1.0	0.00	0.00	1.0	0.0	0.0	0.0	0.00	0.00	0.00
SECTION LINE - SHL 310'FSL & 1740'FWL, SEC.17 - HARDLINE 600' SHL									
100.0	0.00	0.00	100.0	0.0	0.0	0.0	0.00	0.00	0.00
200.0	0.00	0.00	200.0	0.0	0.0	0.0	0.00	0.00	0.00
KOP #1									
300.0	2.00	251.79	300.0	-0.5	-1.7	-0.4	2.00	2.00	0.00
400.0	4.00	251.79	399.8	-2.2	-6.6	-1.4	2.00	2.00	0.00
500.0	6.00	251.79	499.5	-4.9	-14.9	-3.2	2.00	2.00	0.00
600.0	8.00	251.79	598.7	-8.7	-26.5	-5.7	2.00	2.00	0.00
700.0	10.00	251.79	697.5	-13.6	-41.3	-8.8	2.00	2.00	0.00
800.0	12.00	251.79	795.6	-19.6	-59.5	-12.7	2.00	2.00	0.00
900.0	14.00	251.79	893.1	-26.6	-80.8	-17.3	2.00	2.00	0.00
994.7	15.89	251.79	984.6	-34.2	-104.0	-22.3	2.00	2.00	0.00
1,000.0	15.89	251.79	989.6	-34.7	-105.4	-22.5	0.00	0.00	0.00
1,100.0	15.89	251.79	1,085.8	-43.2	-131.4	-28.1	0.00	0.00	0.00
1,200.0	15.89	251.79	1,182.0	-51.8	-157.4	-33.7	0.00	0.00	0.00
1,300.0	15.89	251.79	1,278.2	-60.4	-183.5	-39.2	0.00	0.00	0.00
1,400.0	15.89	251.79	1,374.4	-68.9	-209.5	-44.8	0.00	0.00	0.00
1,500.0	15.89	251.79	1,470.5	-77.5	-235.5	-50.4	0.00	0.00	0.00
1,600.0	15.89	251.79	1,566.7	-86.0	-261.5	-55.9	0.00	0.00	0.00
1,700.0	15.89	251.79	1,662.9	-94.6	-287.5	-61.5	0.00	0.00	0.00
1,800.0	15.89	251.79	1,759.1	-103.2	-313.5	-67.1	0.00	0.00	0.00
1,900.0	15.89	251.79	1,855.2	-111.7	-339.5	-72.6	0.00	0.00	0.00
2,000.0	15.89	251.79	1,951.4	-120.3	-365.6	-78.2	0.00	0.00	0.00
2,100.0	15.89	251.79	2,047.6	-128.8	-391.6	-83.8	0.00	0.00	0.00
2,200.0	15.89	251.79	2,143.8	-137.4	-417.6	-89.3	0.00	0.00	0.00
2,300.0	15.89	251.79	2,239.9	-146.0	-443.6	-94.9	0.00	0.00	0.00
2,400.0	15.89	251.79	2,336.1	-154.5	-469.6	-100.5	0.00	0.00	0.00
2,500.0	15.89	251.79	2,432.3	-163.1	-495.6	-106.0	0.00	0.00	0.00
2,600.0	15.89	251.79	2,528.5	-171.6	-521.7	-111.6	0.00	0.00	0.00
2,700.0	15.89	251.79	2,624.6	-180.2	-547.7	-117.1	0.00	0.00	0.00
2,800.0	15.89	251.79	2,720.8	-188.8	-573.7	-122.7	0.00	0.00	0.00
2,900.0	15.89	251.79	2,817.0	-197.3	-599.7	-128.3	0.00	0.00	0.00
3,000.0	15.89	251.79	2,913.2	-205.9	-625.7	-133.8	0.00	0.00	0.00
3,100.0	15.89	251.79	3,009.4	-214.4	-651.7	-139.4	0.00	0.00	0.00
3,200.0	15.89	251.79	3,105.5	-223.0	-677.7	-145.0	0.00	0.00	0.00
3,300.0	15.89	251.79	3,201.7	-231.6	-703.8	-150.5	0.00	0.00	0.00
3,400.0	15.89	251.79	3,297.9	-240.1	-729.8	-156.1	0.00	0.00	0.00
3,500.0	15.89	251.79	3,394.1	-248.7	-755.8	-161.7	0.00	0.00	0.00
3,600.0	15.89	251.79	3,490.2	-257.2	-781.8	-167.2	0.00	0.00	0.00
3,700.0	15.89	251.79	3,586.4	-265.8	-807.8	-172.8	0.00	0.00	0.00
3,800.0	15.89	251.79	3,682.6	-274.3	-833.8	-178.4	0.00	0.00	0.00
3,900.0	15.89	251.79	3,778.8	-282.9	-859.8	-183.9	0.00	0.00	0.00
4,000.0	15.89	251.79	3,874.9	-291.5	-885.9	-189.5	0.00	0.00	0.00
4,100.0	15.89	251.79	3,971.1	-300.0	-911.9	-195.1	0.00	0.00	0.00
4,200.0	15.89	251.79	4,067.3	-308.6	-937.9	-200.6	0.00	0.00	0.00
4,300.0	15.89	251.79	4,163.5	-317.1	-963.9	-206.2	0.00	0.00	0.00
4,354.0	15.89	251.79	4,215.4	-321.8	-978.0	-209.2	0.00	0.00	0.00
4,400.0	14.97	251.79	4,259.8	-325.6	-989.6	-211.7	2.00	-2.00	0.00
4,500.0	12.97	251.79	4,356.8	-333.1	-1,012.5	-216.6	2.00	-2.00	0.00
4,600.0	10.97	251.79	4,454.6	-339.6	-1,032.2	-220.8	2.00	-2.00	0.00
4,700.0	8.97	251.79	4,553.1	-345.0	-1,048.7	-224.3	2.00	-2.00	0.00
4,800.0	6.97	251.79	4,652.1	-349.4	-1,061.9	-227.1	2.00	-2.00	0.00

Database:	Landmark	Local Co-ordinate Reference:	Well Wickstrom 17-1H
Company:	Condor Energy	TVD Reference:	WELL @ 4683.8ft (Original Well Elev)
Project:	SEC.17-T6N-R60W	MD Reference:	WELL @ 4683.8ft (Original Well Elev)
Site:	Wickstrom 17-1H Pad Sec.17-T6N-R60W	North Reference:	True
Well:	Wickstrom 17-1H	Survey Calculation Method:	Minimum Curvature
Wellbore:	Wellbore #1		
Design:	Plan #2 (7-23-13)		

Planned Survey									
Measured Depth (ft)	Inclination (°)	Azimuth (°)	Vertical Depth (ft)	+N/-S (ft)	+E/-W (ft)	Vertical Section (ft)	Dogleg Rate (°/100ft)	Build Rate (°/100ft)	Turn Rate (°/100ft)
4,900.0	4.97	251.79	4,751.6	-352.6	-1,071.7	-229.3	2.00	-2.00	0.00
5,000.0	2.97	251.79	4,851.3	-354.8	-1,078.3	-230.7	2.00	-2.00	0.00
5,100.0	0.97	251.79	4,951.3	-355.9	-1,081.6	-231.4	2.00	-2.00	0.00
5,148.7	0.00	0.00	5,000.0	-356.0	-1,082.0	-231.4	2.00	-2.00	0.00
5,200.0	0.00	0.00	5,051.3	-356.0	-1,082.0	-231.4	0.00	0.00	0.00
5,300.0	0.00	0.00	5,151.3	-356.0	-1,082.0	-231.4	0.00	0.00	0.00
5,400.0	0.00	0.00	5,251.3	-356.0	-1,082.0	-231.4	0.00	0.00	0.00
5,462.5	0.00	0.00	5,313.8	-356.0	-1,082.0	-231.4	0.00	0.00	0.00
KOP #2									
5,500.0	3.00	359.99	5,351.2	-355.0	-1,082.0	-230.5	7.99	7.99	0.00
5,600.0	11.00	359.99	5,450.4	-342.9	-1,082.0	-218.4	8.00	8.00	0.00
5,700.0	19.00	359.99	5,546.9	-317.0	-1,082.0	-192.7	8.00	8.00	0.00
5,800.0	27.00	359.99	5,638.9	-278.0	-1,082.0	-153.9	8.00	8.00	0.00
5,900.0	35.00	359.99	5,724.6	-226.5	-1,082.0	-102.8	8.00	8.00	0.00
6,000.0	43.00	359.99	5,802.2	-163.6	-1,082.0	-40.3	8.00	8.00	0.00
6,100.0	51.00	359.99	5,870.4	-90.6	-1,082.0	32.3	8.00	8.00	0.00
6,200.0	59.00	359.99	5,927.7	-8.7	-1,082.1	113.6	8.00	8.00	0.00
6,300.0	67.00	359.99	5,973.0	80.3	-1,082.1	202.1	8.00	8.00	0.00
6,400.0	75.00	359.99	6,005.6	174.8	-1,082.1	296.0	8.00	8.00	0.00
6,500.0	83.00	359.99	6,024.7	272.9	-1,082.1	393.4	8.00	8.00	0.00
6,587.5	90.00	359.99	6,030.0	360.2	-1,082.1	480.2	8.00	8.00	0.00
6,588.1	90.00	359.99	6,030.0	360.7	-1,082.1	480.7	0.00	0.00	0.00
End of Build - 7" - Landing Pt. 660'FSL & 660'FWL									
6,589.2	90.00	359.97	6,030.0	361.8	-1,082.1	481.8	2.00	0.00	-2.00
6,600.0	90.00	359.97	6,030.0	372.7	-1,082.1	492.6	0.00	0.00	0.00
6,700.0	90.00	359.97	6,030.0	472.7	-1,082.2	591.9	0.00	0.00	0.00
6,800.0	90.00	359.97	6,030.0	572.7	-1,082.2	691.3	0.00	0.00	0.00
6,900.0	90.00	359.97	6,030.0	672.7	-1,082.3	790.6	0.00	0.00	0.00
7,000.0	90.00	359.97	6,030.0	772.7	-1,082.3	890.0	0.00	0.00	0.00
7,100.0	90.00	359.97	6,030.0	872.7	-1,082.4	989.4	0.00	0.00	0.00
7,200.0	90.00	359.97	6,030.0	972.7	-1,082.5	1,088.7	0.00	0.00	0.00
7,300.0	90.00	359.97	6,030.0	1,072.7	-1,082.5	1,188.1	0.00	0.00	0.00
7,400.0	90.00	359.97	6,030.0	1,172.7	-1,082.6	1,287.5	0.00	0.00	0.00
7,500.0	90.00	359.97	6,030.0	1,272.7	-1,082.6	1,386.8	0.00	0.00	0.00
7,600.0	90.00	359.97	6,030.0	1,372.7	-1,082.7	1,486.2	0.00	0.00	0.00
7,700.0	90.00	359.97	6,030.0	1,472.7	-1,082.7	1,585.6	0.00	0.00	0.00
7,800.0	90.00	359.97	6,030.0	1,572.7	-1,082.8	1,684.9	0.00	0.00	0.00
7,900.0	90.00	359.97	6,030.0	1,672.7	-1,082.9	1,784.3	0.00	0.00	0.00
8,000.0	90.00	359.97	6,030.0	1,772.7	-1,082.9	1,883.7	0.00	0.00	0.00
8,100.0	90.00	359.97	6,030.0	1,872.7	-1,083.0	1,983.0	0.00	0.00	0.00
8,200.0	90.00	359.97	6,030.0	1,972.7	-1,083.0	2,082.4	0.00	0.00	0.00
8,300.0	90.00	359.97	6,030.0	2,072.7	-1,083.1	2,181.8	0.00	0.00	0.00
8,400.0	90.00	359.97	6,030.0	2,172.7	-1,083.1	2,281.1	0.00	0.00	0.00
8,500.0	90.00	359.97	6,030.0	2,272.7	-1,083.2	2,380.5	0.00	0.00	0.00
8,600.0	90.00	359.97	6,030.0	2,372.7	-1,083.2	2,479.9	0.00	0.00	0.00
8,700.0	90.00	359.97	6,030.0	2,472.7	-1,083.3	2,579.2	0.00	0.00	0.00
8,800.0	90.00	359.97	6,030.0	2,572.7	-1,083.4	2,678.6	0.00	0.00	0.00
8,900.0	90.00	359.97	6,030.0	2,672.7	-1,083.4	2,778.0	0.00	0.00	0.00
9,000.0	90.00	359.97	6,030.0	2,772.7	-1,083.5	2,877.3	0.00	0.00	0.00
9,100.0	90.00	359.97	6,030.0	2,872.7	-1,083.5	2,976.7	0.00	0.00	0.00
9,200.0	90.00	359.97	6,030.0	2,972.7	-1,083.6	3,076.1	0.00	0.00	0.00
9,300.0	90.00	359.97	6,030.0	3,072.7	-1,083.6	3,175.4	0.00	0.00	0.00
9,400.0	90.00	359.97	6,030.0	3,172.7	-1,083.7	3,274.8	0.00	0.00	0.00
9,500.0	90.00	359.97	6,030.0	3,272.7	-1,083.8	3,374.2	0.00	0.00	0.00

Database:	Landmark	Local Co-ordinate Reference:	Well Wickstrom 17-1H
Company:	Condor Energy	TVD Reference:	WELL @ 4683.8ft (Original Well Elev)
Project:	SEC.17-T6N-R60W	MD Reference:	WELL @ 4683.8ft (Original Well Elev)
Site:	Wickstrom 17-1H Pad Sec.17-T6N-R60W	North Reference:	True
Well:	Wickstrom 17-1H	Survey Calculation Method:	Minimum Curvature
Wellbore:	Wellbore #1		
Design:	Plan #2 (7-23-13)		

Planned Survey									
Measured Depth (ft)	Inclination (°)	Azimuth (°)	Vertical Depth (ft)	+N/-S (ft)	+E/-W (ft)	Vertical Section (ft)	Dogleg Rate (°/100ft)	Build Rate (°/100ft)	Turn Rate (°/100ft)
9,600.0	90.00	359.97	6,030.0	3,372.7	-1,083.8	3,473.5	0.00	0.00	0.00
9,700.0	90.00	359.97	6,030.0	3,472.7	-1,083.9	3,572.9	0.00	0.00	0.00
9,800.0	90.00	359.97	6,030.0	3,572.7	-1,083.9	3,672.3	0.00	0.00	0.00
9,900.0	90.00	359.97	6,030.0	3,672.7	-1,084.0	3,771.6	0.00	0.00	0.00
10,000.0	90.00	359.97	6,030.0	3,772.7	-1,084.0	3,871.0	0.00	0.00	0.00
10,100.0	90.00	359.97	6,030.0	3,872.7	-1,084.1	3,970.4	0.00	0.00	0.00
10,200.0	90.00	359.97	6,030.0	3,972.7	-1,084.1	4,069.7	0.00	0.00	0.00
10,300.0	90.00	359.97	6,030.0	4,072.7	-1,084.2	4,169.1	0.00	0.00	0.00
10,400.0	90.00	359.97	6,030.0	4,172.7	-1,084.3	4,268.4	0.00	0.00	0.00
10,500.0	90.00	359.97	6,030.0	4,272.7	-1,084.3	4,367.8	0.00	0.00	0.00
10,600.0	90.00	359.97	6,030.0	4,372.7	-1,084.4	4,467.2	0.00	0.00	0.00
10,700.0	90.00	359.97	6,030.0	4,472.7	-1,084.4	4,566.5	0.00	0.00	0.00
10,800.0	90.00	359.97	6,030.0	4,572.7	-1,084.5	4,665.9	0.00	0.00	0.00
10,900.0	90.00	359.97	6,030.0	4,672.7	-1,084.5	4,765.3	0.00	0.00	0.00
11,000.0	90.00	359.97	6,030.0	4,772.7	-1,084.6	4,864.6	0.00	0.00	0.00
11,100.0	90.00	359.97	6,030.0	4,872.7	-1,084.6	4,964.0	0.00	0.00	0.00
11,200.0	90.00	359.97	6,030.0	4,972.7	-1,084.7	5,063.4	0.00	0.00	0.00
11,300.0	90.00	359.97	6,030.0	5,072.7	-1,084.8	5,162.7	0.00	0.00	0.00
11,400.0	90.00	359.97	6,030.0	5,172.7	-1,084.8	5,262.1	0.00	0.00	0.00
11,500.0	90.00	359.97	6,030.0	5,272.7	-1,084.9	5,361.5	0.00	0.00	0.00
11,600.0	90.00	359.97	6,030.0	5,372.7	-1,084.9	5,460.8	0.00	0.00	0.00
11,700.0	90.00	359.97	6,030.0	5,472.7	-1,085.0	5,560.2	0.00	0.00	0.00
11,800.0	90.00	359.97	6,030.0	5,572.7	-1,085.0	5,659.6	0.00	0.00	0.00
11,900.0	90.00	359.97	6,030.0	5,672.7	-1,085.1	5,758.9	0.00	0.00	0.00
12,000.0	90.00	359.97	6,030.0	5,772.7	-1,085.2	5,858.3	0.00	0.00	0.00
12,100.0	90.00	359.97	6,030.0	5,872.7	-1,085.2	5,957.7	0.00	0.00	0.00
12,200.0	90.00	359.97	6,030.0	5,972.7	-1,085.3	6,057.0	0.00	0.00	0.00
12,300.0	90.00	359.97	6,030.0	6,072.7	-1,085.3	6,156.4	0.00	0.00	0.00
12,400.0	90.00	359.97	6,030.0	6,172.7	-1,085.4	6,255.8	0.00	0.00	0.00
12,500.0	90.00	359.97	6,030.0	6,272.7	-1,085.4	6,355.1	0.00	0.00	0.00
12,600.0	90.00	359.97	6,030.0	6,372.7	-1,085.5	6,454.5	0.00	0.00	0.00
12,700.0	90.00	359.97	6,030.0	6,472.7	-1,085.5	6,553.9	0.00	0.00	0.00
12,800.0	90.00	359.97	6,030.0	6,572.7	-1,085.6	6,653.2	0.00	0.00	0.00
12,900.0	90.00	359.97	6,030.0	6,672.7	-1,085.7	6,752.6	0.00	0.00	0.00
13,000.0	90.00	359.97	6,030.0	6,772.7	-1,085.7	6,852.0	0.00	0.00	0.00
13,100.0	90.00	359.97	6,030.0	6,872.7	-1,085.8	6,951.3	0.00	0.00	0.00
13,200.0	90.00	359.97	6,030.0	6,972.7	-1,085.8	7,050.7	0.00	0.00	0.00
13,300.0	90.00	359.97	6,030.0	7,072.7	-1,085.9	7,150.1	0.00	0.00	0.00
13,400.0	90.00	359.97	6,030.0	7,172.7	-1,085.9	7,249.4	0.00	0.00	0.00
13,500.0	90.00	359.97	6,030.0	7,272.7	-1,086.0	7,348.8	0.00	0.00	0.00
13,600.0	90.00	359.97	6,030.0	7,372.7	-1,086.1	7,448.2	0.00	0.00	0.00
13,700.0	90.00	359.97	6,030.0	7,472.7	-1,086.1	7,547.5	0.00	0.00	0.00
13,800.0	90.00	359.97	6,030.0	7,572.7	-1,086.2	7,646.9	0.00	0.00	0.00
13,900.0	90.00	359.97	6,030.0	7,672.7	-1,086.2	7,746.3	0.00	0.00	0.00
14,000.0	90.00	359.97	6,030.0	7,772.7	-1,086.3	7,845.6	0.00	0.00	0.00
14,100.0	90.00	359.97	6,030.0	7,872.7	-1,086.3	7,945.0	0.00	0.00	0.00
14,200.0	90.00	359.97	6,030.0	7,972.6	-1,086.4	8,044.3	0.00	0.00	0.00
14,300.0	90.00	359.97	6,030.0	8,072.6	-1,086.4	8,143.7	0.00	0.00	0.00
14,400.0	90.00	359.97	6,030.0	8,172.6	-1,086.5	8,243.1	0.00	0.00	0.00
14,500.0	90.00	359.97	6,030.0	8,272.6	-1,086.6	8,342.4	0.00	0.00	0.00
14,600.0	90.00	359.97	6,030.0	8,372.6	-1,086.6	8,441.8	0.00	0.00	0.00
14,700.0	90.00	359.97	6,030.0	8,472.6	-1,086.7	8,541.2	0.00	0.00	0.00
14,800.0	90.00	359.97	6,030.0	8,572.6	-1,086.7	8,640.5	0.00	0.00	0.00
14,900.0	90.00	359.97	6,030.0	8,672.6	-1,086.8	8,739.9	0.00	0.00	0.00

Database:	Landmark	Local Co-ordinate Reference:	Well Wickstrom 17-1H
Company:	Condor Energy	TVD Reference:	WELL @ 4683.8ft (Original Well Elev)
Project:	SEC.17-T6N-R60W	MD Reference:	WELL @ 4683.8ft (Original Well Elev)
Site:	Wickstrom 17-1H Pad Sec.17-T6N-R60W	North Reference:	True
Well:	Wickstrom 17-1H	Survey Calculation Method:	Minimum Curvature
Wellbore:	Wellbore #1		
Design:	Plan #2 (7-23-13)		

Planned Survey										
Measured Depth (ft)	Inclination (°)	Azimuth (°)	Vertical Depth (ft)	+N/-S (ft)	+E/-W (ft)	Vertical Section (ft)	Dogleg Rate (°/100ft)	Build Rate (°/100ft)	Turn Rate (°/100ft)	
15,000.0	90.00	359.97	6,030.0	8,772.6	-1,086.8	8,839.3	0.00	0.00	0.00	
15,100.0	90.00	359.97	6,030.0	8,872.6	-1,086.9	8,938.6	0.00	0.00	0.00	
15,200.0	90.00	359.97	6,030.0	8,972.6	-1,086.9	9,038.0	0.00	0.00	0.00	
15,300.0	90.00	359.97	6,030.0	9,072.6	-1,087.0	9,137.4	0.00	0.00	0.00	
15,400.0	90.00	359.97	6,030.0	9,172.6	-1,087.1	9,236.7	0.00	0.00	0.00	
15,500.0	90.00	359.97	6,030.0	9,272.6	-1,087.1	9,336.1	0.00	0.00	0.00	
15,600.0	90.00	359.97	6,030.0	9,372.6	-1,087.2	9,435.5	0.00	0.00	0.00	
15,700.0	90.00	359.97	6,030.0	9,472.6	-1,087.2	9,534.8	0.00	0.00	0.00	
15,787.1	90.00	359.97	6,030.0	9,559.8	-1,087.3	9,621.4	0.00	0.00	0.00	
BHL 660'FNL & 660'FWL, SEC.8 - HARDLINE 600' BHL										

Casing Points					
Measured Depth (ft)	Vertical Depth (ft)	Name	Casing Diameter (")	Hole Diameter (")	
6,588.1	6,030.0	7"	7	7-1/2	

Plan Annotations					
Measured Depth (ft)	Vertical Depth (ft)	+N/-S (ft)	+E/-W (ft)	Comment	
200.0	200.0	0.0	0.0	KOP #1	
5,462.5	5,313.8	-356.0	-1,082.0	KOP #2	
6,588.1	6,030.0	360.8	-1,082.1	End of Build	