

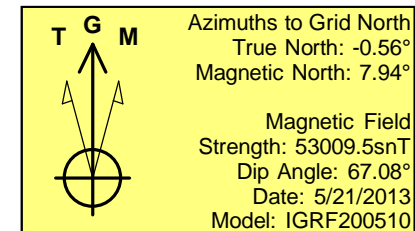
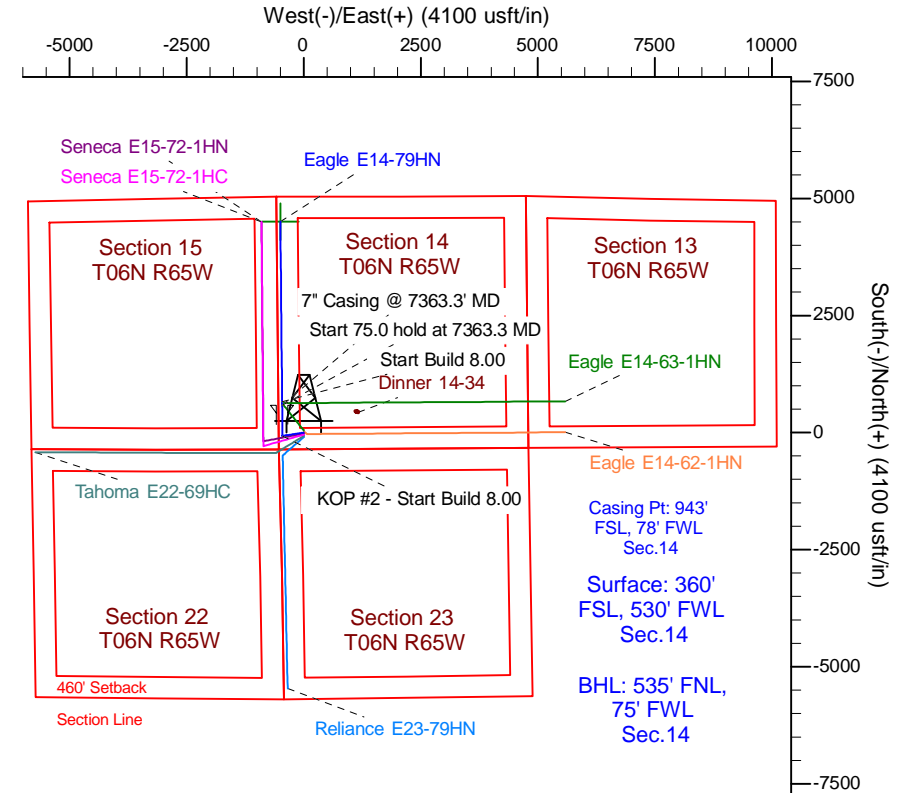
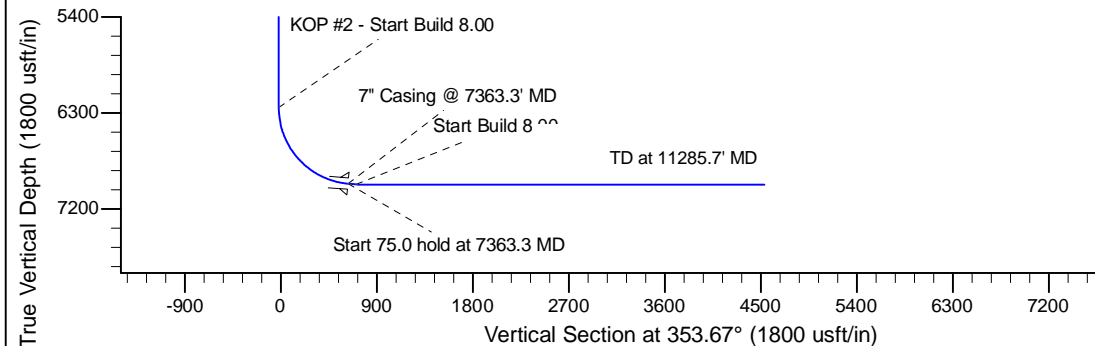
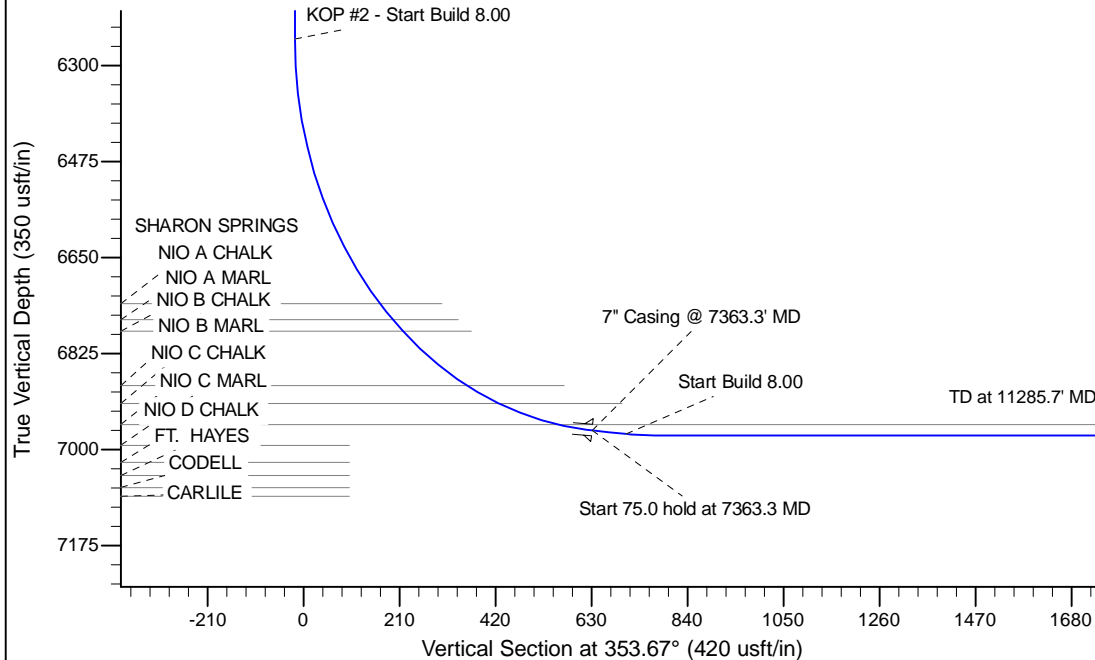
Project: Wattenberg Field
Site: E (Sec.14-T06N-R65W) Weld County, CO
Well: Eagle E14-79HN
Wellbore: Original Drilling
Design: APD - Rev 0

Northern Region Drilling

Geodetic System: US State Plane 1983
Datum: North American Datum 1983
Ellipsoid: GRS 1980
Zone: Colorado Northern Zone
System Datum: Mean Sea Level

SECTION DETAILS

Sec	MD	Inc	Azi	TVD	+N/-S	+E/-W	Dleg	TFace	Vsect	Target
1	0.0	0.00	0.00	0.0	0.0	0.0	0.00	0.00	0.0	
2	2000.0	0.00	0.00	2000.0	0.0	0.0	0.00	0.00	0.0	
3	2699.9	14.00	261.25	2693.0	-12.9	-84.1	2.00	261.25	-3.6	
4	3899.6	14.00	261.25	3857.0	-57.1	-370.9	0.00	0.00	-15.8	
5	4599.5	0.00	0.00	4550.0	-70.0	-455.0	2.00	180.00	-19.4	
6	6300.8	0.00	0.00	6251.3	-70.0	-455.0	0.00	0.00	-19.4	
7	7363.3	85.00	359.44	6964.7	583.7	-461.4	8.00	359.44	631.1	
8	7438.3	85.00	359.44	6971.3	658.5	-462.2	0.00	0.00	705.4	
9	7500.8	90.00	359.44	6974.0	720.9	-462.8	8.00	0.00	767.5	
10	11285.7	90.00	359.44	6974.0	4505.6	-500.0	0.00	0.00	4533.3	Eagle E14-79HN BHL 535'FNL, 75'FWL



WELL DETAILS: Eagle E14-79HN				
Ground Level: 4737.0				
0.0	0.0	1418792.94	3239742.30	-104.638170
Plan: APD - Rev 0 (Eagle E14-79HN/Original Drilling)				
Created By: Shailey Jewell Date: 9:16, May 24 2013				
OK to submit with 2A as per Noble Drilling 5/24/2013 9:42				