

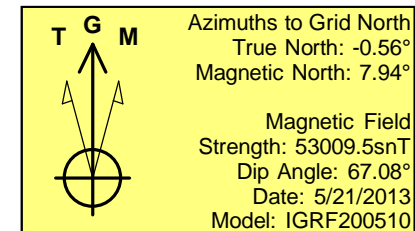
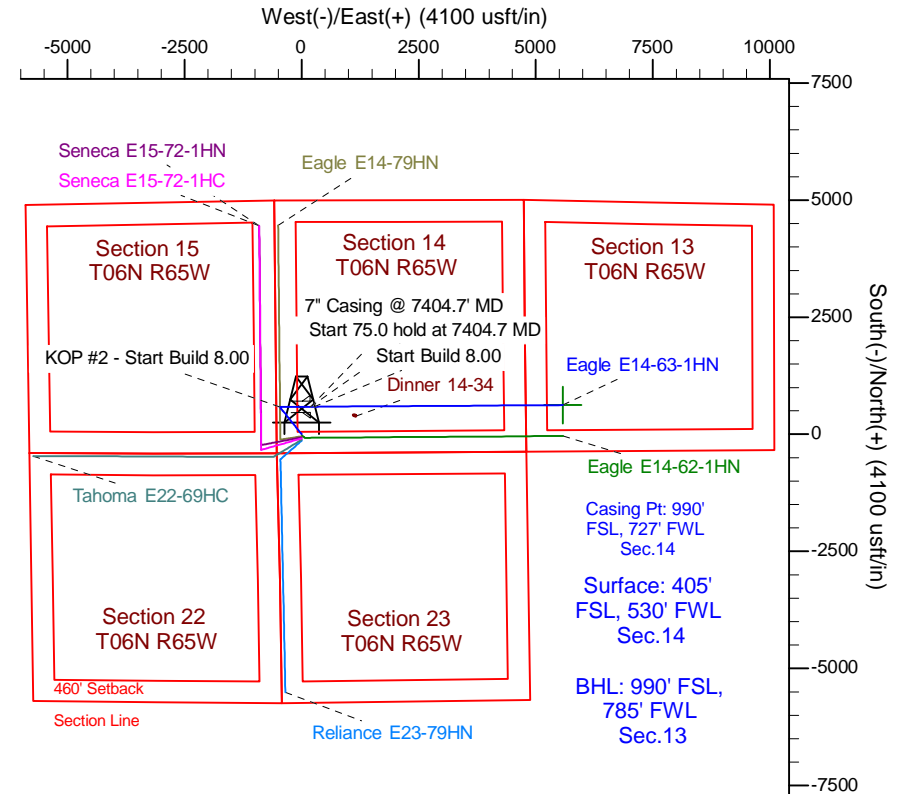
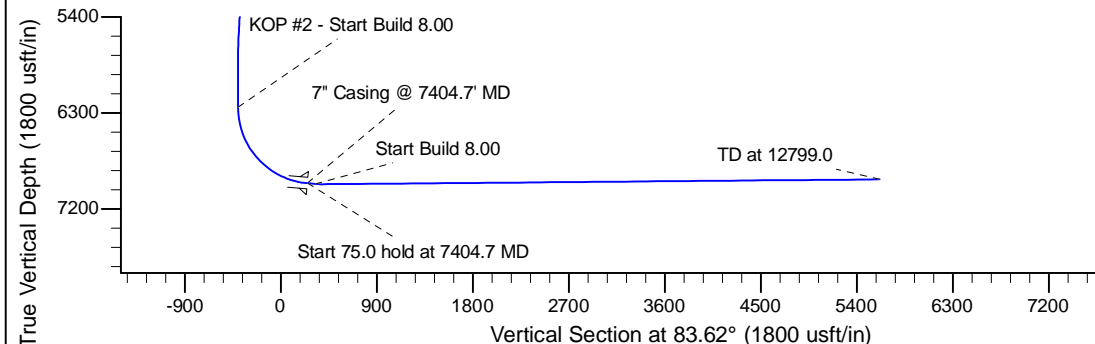
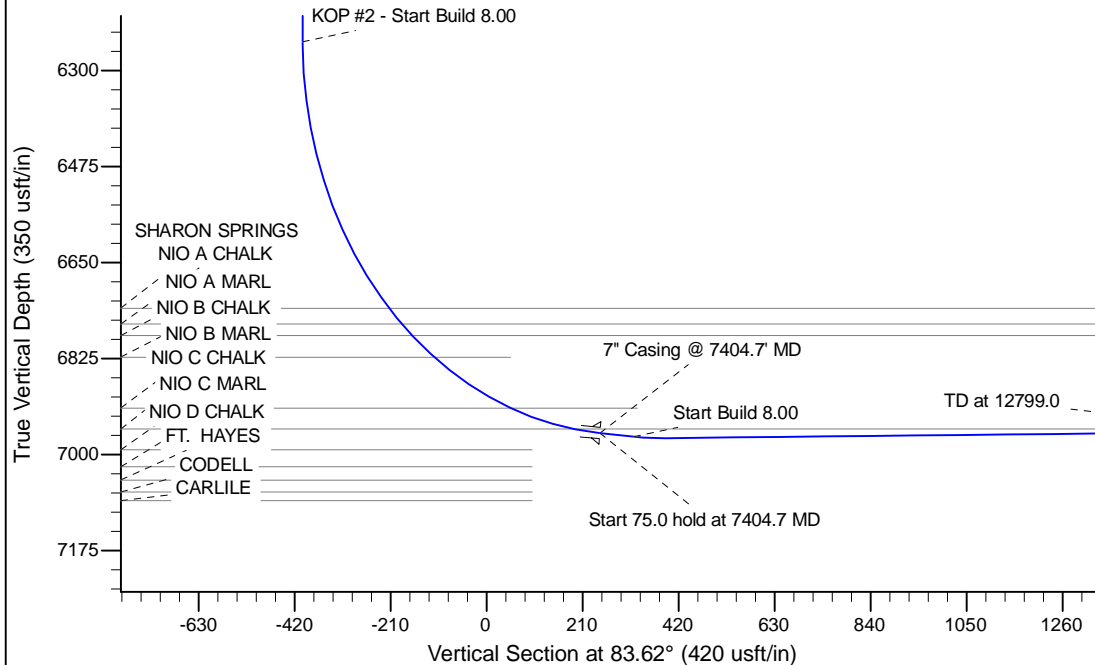
Project: Wattenberg Field
 Site: E (Sec.14-T06N-R65W) Weld County, CO
 Well: Eagle E14-63-1HN
 Wellbore: Original Drilling
 Design: APD - Rev 0

Northern Region Drilling

Geodetic System: US State Plane 1983
 Datum: North American Datum 1983
 Ellipsoid: GRS 1980
 Zone: Colorado Northern Zone
 System Datum: Mean Sea Level

SECTION DETAILS

Sec	MD	Inc	Azi	TVD	+N/-S	+E/-W	Dleg	TFace	VSec	Target
1	0.0	0.00	0.00	0.0	0.0	0.0	0.00	0.00	0.0	
2	2400.0	0.00	0.00	2400.0	0.0	0.0	0.00	0.00	0.0	
3	3200.9	16.02	321.22	3190.5	86.7	-69.7	2.00	321.22	-59.6	
4	5114.1	16.02	321.22	5029.5	498.3	-400.3	0.00	0.00	-342.5	
5	5915.1	0.00	0.00	5820.0	585.0	-470.0	2.00	180.00	-402.1	
6	6342.2	0.00	0.00	6247.1	585.0	-470.0	0.00	0.00	-402.1	
7	7404.7	85.00	89.64	6960.6	589.1	183.8	8.00	89.64	248.0	
8	7479.7	85.00	89.64	6967.1	589.6	258.5	0.00	0.00	322.4	
9	7548.4	90.50	89.64	6969.8	590.0	327.1	8.00	0.00	390.6	
10	12799.0	90.50	89.64	6924.0	623.2	5577.4	0.00	0.00	5612.1	Eagle E14-63-1HN BHL 990'FSL, 785'FWL



WELL DETAILS: Eagle E14-63-1HN					
Ground Level: 4736.0					
0.0	0.0	1418836.68	3239744.66	40.479910	-104.638160
Plan: APD - Rev 0 (Eagle E14-63-1HN/Original Drilling)					
Created By: Shailey Jewell			Date: 9:13, May 24 2013		
OK to submit with 2A as per Noble Drilling 5/24/2013 9:42					