

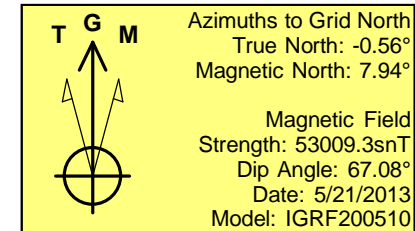
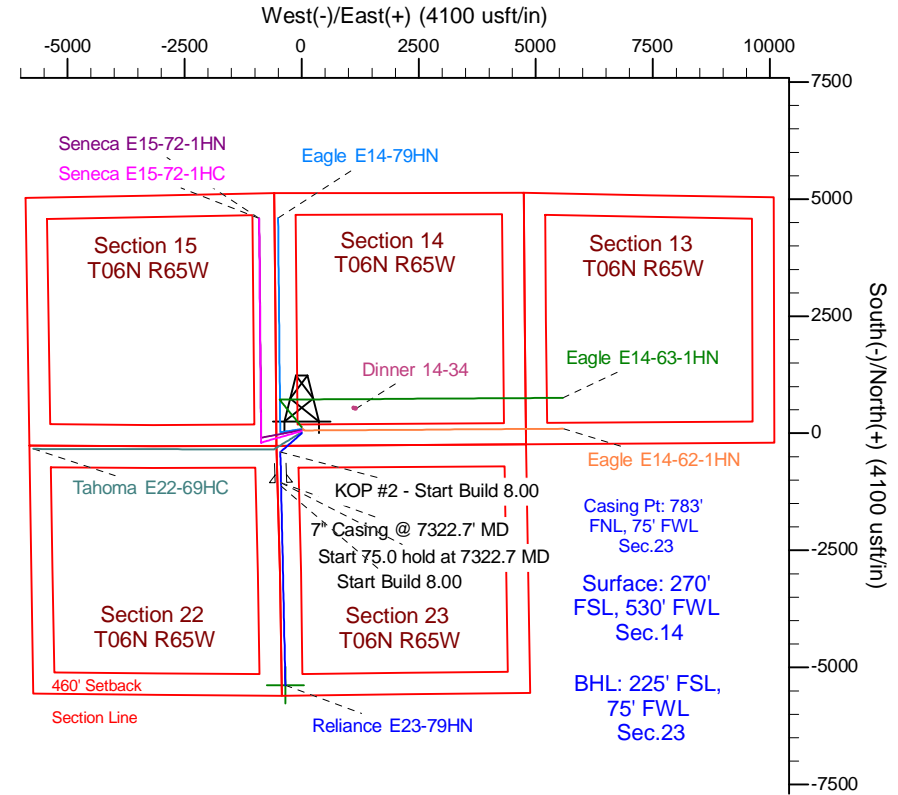
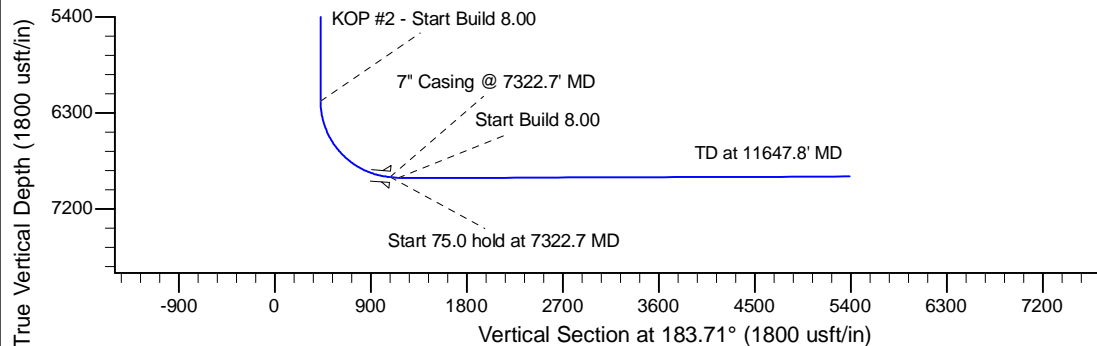
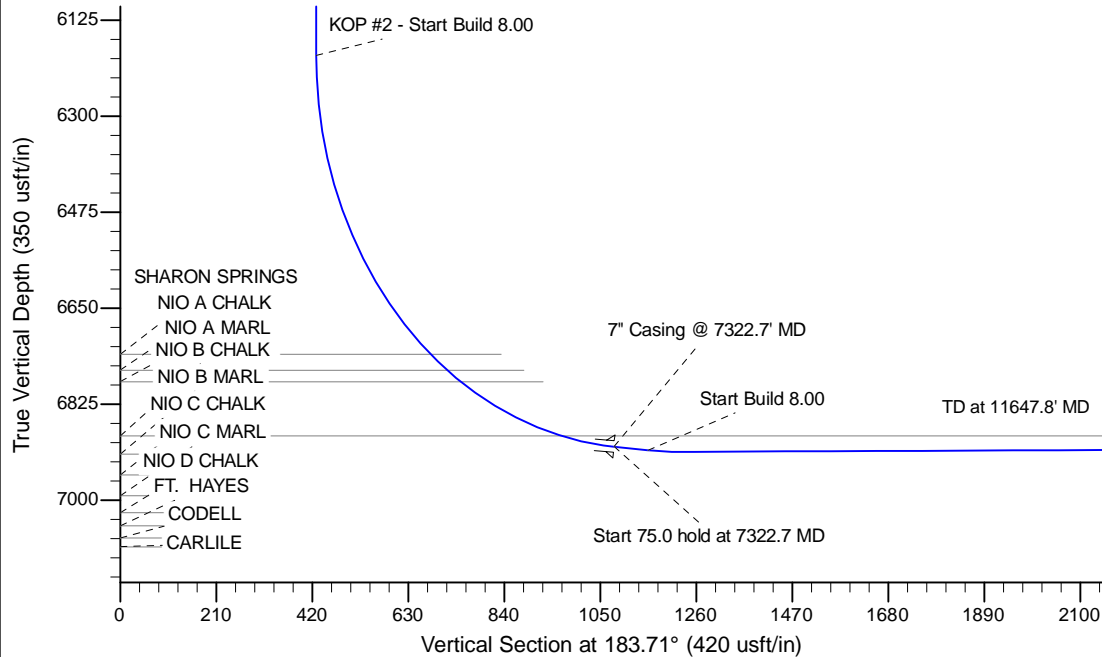
Project: Wattenberg Field  
 Site: E (Sec.14-T06N-R65W) Weld County, CO  
 Well: Reliance E23-79HN  
 Wellbore: Original Drilling  
 Design: APD - Rev 0

# Northern Region Drilling

Geodetic System: US State Plane 1983  
 Datum: North American Datum 1983  
 Ellipsoid: GRS 1980  
 Zone: Colorado Northern Zone  
 System Datum: Mean Sea Level

## SECTION DETAILS

Sec	MD	Inc	Azi	TVD	+N/-S	+E/-W	Dleg	TFace	Vsect	Target
1	0.0	0.00	0.00	0.0	0.0	0.0	0.00	0.00	0.0	
2	1000.0	0.00	0.00	1000.0	0.0	0.0	0.00	0.00	0.0	
3	1750.1	15.00	228.68	1741.6	-64.5	-73.3	2.00	228.68	69.1	
4	3336.0	15.00	228.68	3273.4	-335.5	-381.7	0.00	0.00	359.5	
5	4086.1	0.00	0.00	4015.0	-400.0	-455.0	2.00	180.00	428.6	
6	6260.2	0.00	0.00	6189.1	-400.0	-455.0	0.00	0.00	428.6	
7	7322.7	85.00	178.77	6902.6	-1053.6	-441.0	8.00	178.77	1079.9	
8	7397.7	85.00	178.77	6909.1	-1128.3	-439.4	0.00	0.00	1154.4	
9	7462.7	90.20	178.77	6911.8	-1193.2	-438.0	8.00	0.00	1219.1	
10	11647.8	90.20	178.77	6897.2	-5377.3	-348.4	0.00	0.00	5388.6	Reliance E23-79HN BHL 225'FSL, 75'FWL



WELL DETAILS: Reliance E23-79HN					
Ground Level:4737.0					
0.0	0.0	Northing	Easting	Latitude	Longitude
		1418701.89	3239745.97	40.479540	-104.638160
Plan: APD - Rev 0 (Reliance E23-79HN/Original Drilling)					
Created By: Shailey Jewell			Date: 9:19, May 24 2013		
OK to submit with 2A as per Noble Drilling					
5/24/2013 9:41					