

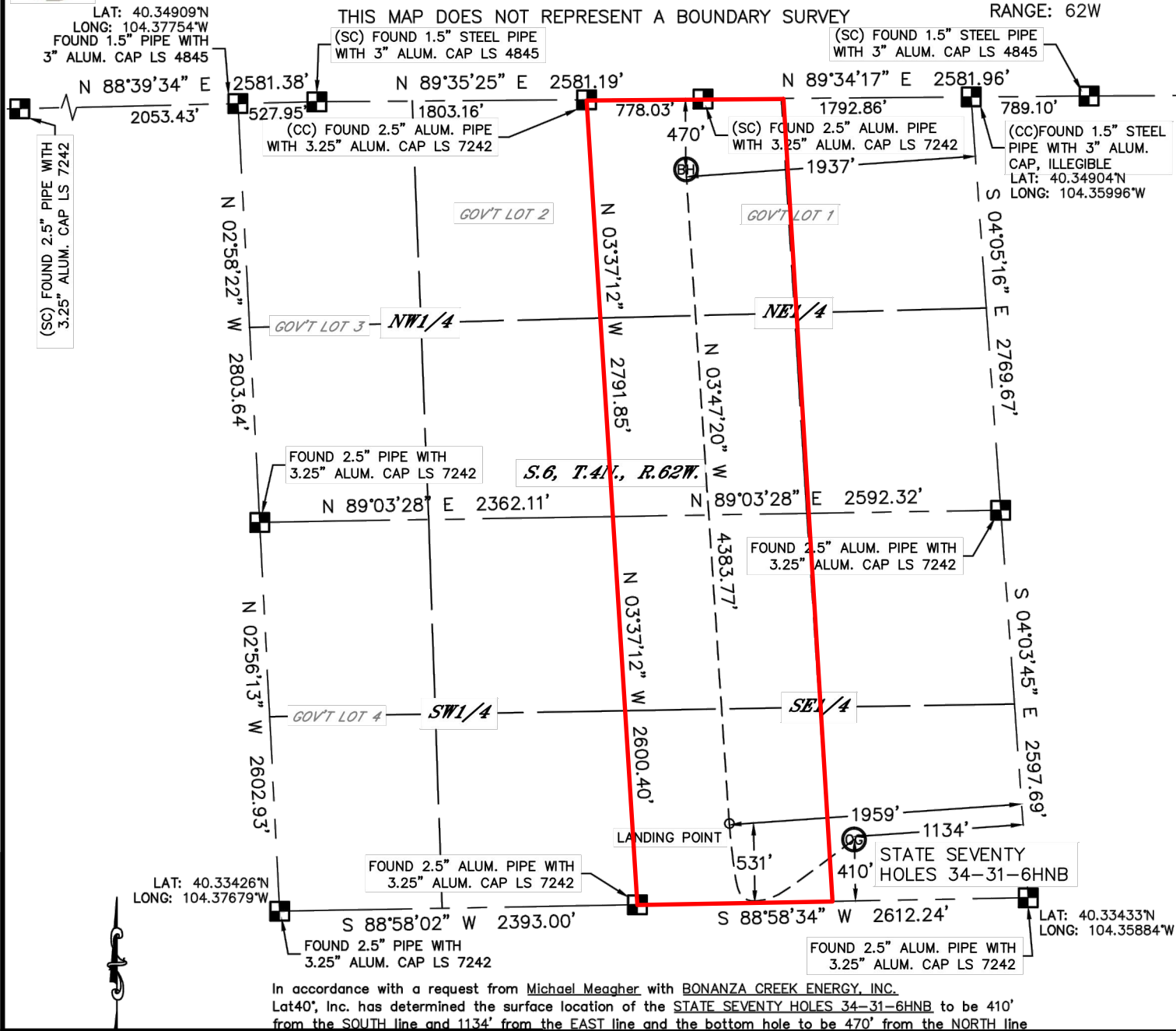


Lat40°, Inc. 1635 Foxtrail Drive, Suite 325 Loveland, CO 970-776-3321

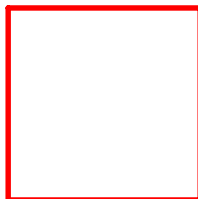
WELL LOCATION CERTIFICATE

SECTION: 6
TOWNSHIP: 4N
RANGE: 62W

THIS MAP DOES NOT REPRESENT A BOUNDARY SURVEY



**BONANZA
CREEK**



Wellbore Spacing Unit Outline



Wellbore Spacing Unit Map

22 July 2013 ksc

State Seventy Holes 34-31-6HNB
W/2 E/2 Sec 06 T4N R62W 6th PM
Weld County, Colorado