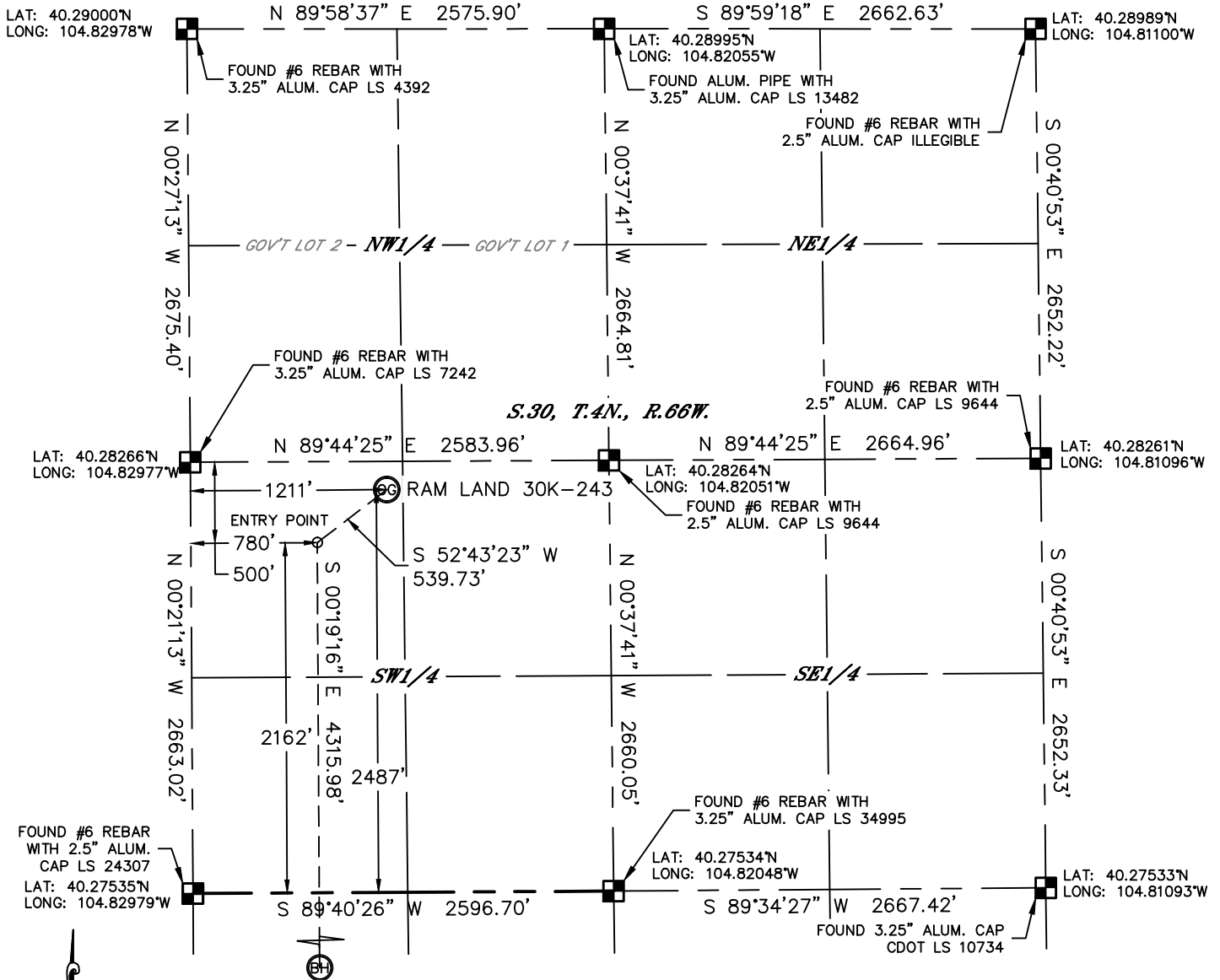




WELL LOCATION CERTIFICATE

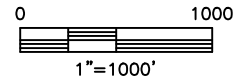
SECTION: 30
TOWNSHIP: 4N
RANGE: 66W

THIS MAP DOES NOT REPRESENT A BOUNDARY SURVEY



In accordance with a request from Mac Neumann with PDC ENERGY, Lat40°, Inc. has determined the surface location of the RAM LAND 30K-243 to be 2487' from the SOUTH line and 1211' from the WEST line as measured at right angles from the section lines of Section 30, Township 4 North, Range 66 West and the bottom hole to be 2154' from the NORTH line and 780' from the WEST line as measured at right angles from the section lines of Section 31, Township 4 North, Range 66 West of the Sixth Principal Meridian, County of Weld, State of Colorado.

I hereby state that this Well Location Certificate was prepared by me, or under my direct supervision, that the fieldwork was completed on 6/7/2013, for and on behalf of PDC ENERGY. That this is not a Land Survey Plat or an Improvement Survey Plat, and that it is not to be relied upon for establishment of fence, building, or other future improvement lines.



NOTE:

- 1) Bearings shown are Grid Bearings of the Colorado State Plane Coordinate System, North Zone, North American Datum 1983/2007. The lineal dimensions as contained herein are based upon the "U.S. Survey Foot."
- 2) Ground elevations are based on an observed GPS elevation (NAVD 1988 DATUM).
- 3) IMPROVEMENTS: See LOCATION DRAWING for all visible improvements within 400' of disturbed area.
- 4) SURFACE USE: CROPLAND
- 5) INSTRUMENT OPERATOR: WYATT HALL

SURFACE LOCATION

LAT: 40.28217°N
LONG: 104.82543°W
PDOP: 2.1
ELEV: 4758'
1/4, 1/4: NW1/4SW1/4
NEAREST PROPERTY LINE: 175' NORTH

ENTRY POINT

LAT: 40.28128°N
LONG: 104.82698°W

BOTTOM HOLE

LAT: 40.26943°N
LONG: 104.82701°W

NOTE

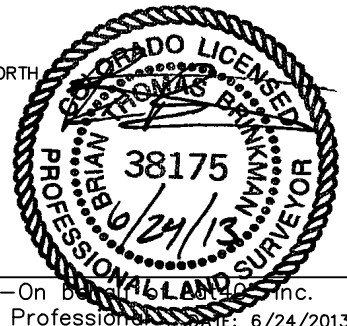
According to Colorado law, you must commence any legal action based upon any defect in this W.L.C. within three years after you discover such defect. In no event, may any action based upon any defect in this survey be commenced more than ten years after the date of the certificate shown hereon. (13-80-105 C.R.S.)

LEGEND

- = ALIQUOT MONUMENT AS DESCRIBED
- = CALCULATED POSITION

SHEET 1 OF 2

Brian T. Brinkman—On behalf of Lat40°, Inc.
Colorado Licensed Professional Land Surveyor
DATE: 6/24/2013
PROJECT#: 2013085





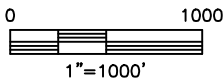
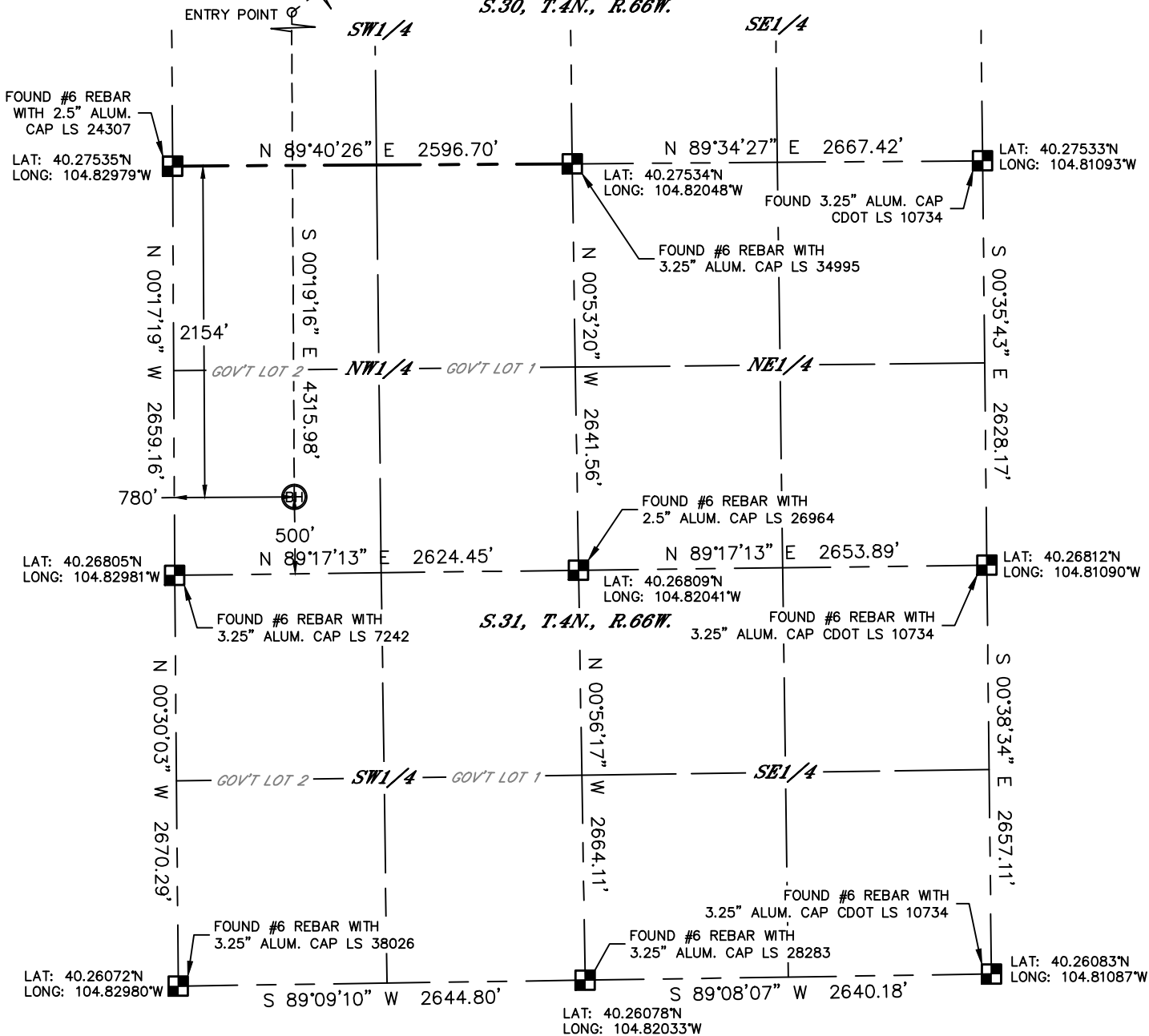
Lat40°, Inc. 1635 Foxtrail Drive, Suite 325 Loveland, CO 970-776-3321

WELL LOCATION CERTIFICATE

SECTION: 30
TOWNSHIP: 4N
RANGE: 66W

THIS MAP DOES NOT REPRESENT A BOUNDARY SURVEY
RAM LAND 30K-243

S.30, T.4N., R.66W.



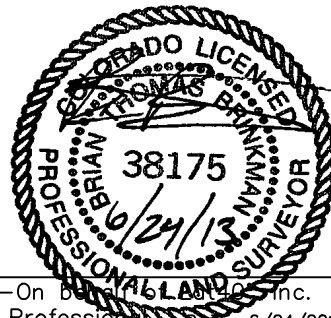
NOTE
 According to Colorado law, you must commence any legal action based upon any defect in this W.L.C. within three years after you discover such defect. In no event, may any action based upon any defect in this survey be commenced more than ten years after the date of the certificate shown hereon. (13-80-105 C.R.S.)

LEGEND

- = ALIQUOT MONUMENT AS DESCRIBED
- = CALCULATED POSITION

SHEET 2 OF 2

Brian T. Brinkman—On behalf of Lat40°, Inc.
 Colorado Licensed Professional Land Surveyor No. 38175
 DATE: 6/24/2013
 PROJECT#: 2013085

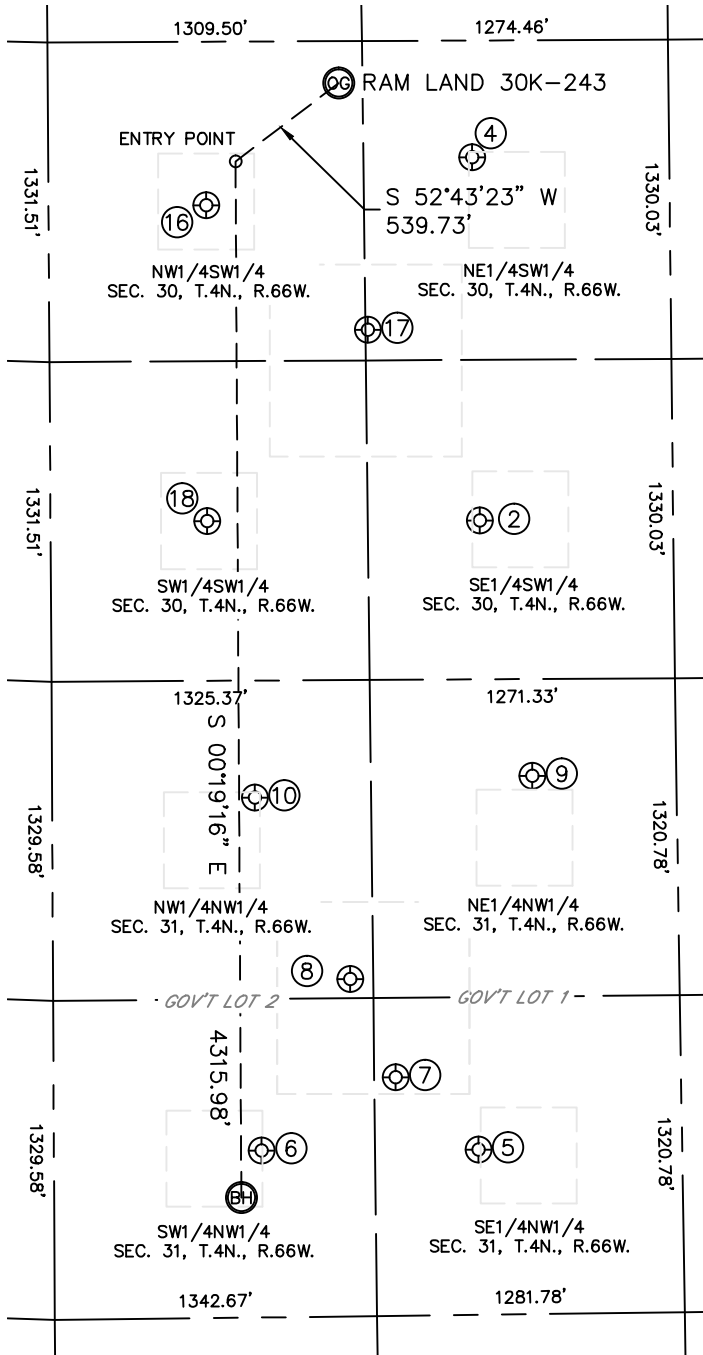




SITE SKETCH

RAM LAND 30K-243

SECTION: 30
TOWNSHIP: 4N
RANGE: 66W



②
LAIR NO. 3
SE1/4SW1/4
661' FSL
1788' FWL
LAT-40.27715°N
LONG-104.82338°W
PDOP:1.6
ELEV: 4762

④
GRESS NO. 23-30
NE1/4SW1/4
2174' FSL
1765' FWL
LAT-40.28131°N
LONG-104.82345°W
PDOP:1.3
ELEV: 4759

⑤
GURLEY 31-24
SE1/4NW1/4
1960' FNL
1769' FWL
LAT-40.26996°N
LONG-104.82347°W
PDOP:2.8
ELEV: 4767'

⑥
GURLEY 31-23
SW1/4NW1/4
1958' FNL
865' FWL
LAT-40.26997°N
LONG-104.82670°W
PDOP:2.8
ELEV: 4767'

⑦
GURLEY 1-31 1
SE1/4NW1/4
1656' FNL
1425' FWL
LAT-40.27080°N
LONG-104.82469°W
PDOP:2.8
ELEV: 4765'

⑧
GURLEY 5
NW1/4NW1/4
1246' FNL
1237' FWL
LAT-40.27192°N
LONG-104.82537°W
PDOP:2.7
ELEV: 4763'

⑨
BRUCE 1
NE1/4NW1/4
404' FNL
2001' FWL
LAT-40.27423°N
LONG-104.82262°W
PDOP:2.0
ELEV: 4765'

⑩
GURLEY 11-31
NW1/4NW1/4
487' FNL
845' FWL
LAT-40.27401°N
LONG-104.82676°W
PDOP:3.2
ELEV: 4764'

⑬
LAIR 1
NW1/4SW1/4
1980' FSL
656' FWL
LAT-40.28078°N
LONG-104.82743°W
PDOP:1.8
ELEV: 4760'

⑰
LAIR 5
NE1/4SW1/4
1458' FSL
1327' FWL
LAT-40.27934°N
LONG-104.82503°W
PDOP:1.7
ELEV: 4760'

⑱
LAIR 2
SW1/4SW1/4
664' FSL
652' FWL
LAT-40.27717°N
LONG-104.82745°W
PDOP:2.0
ELEV: 4764'

