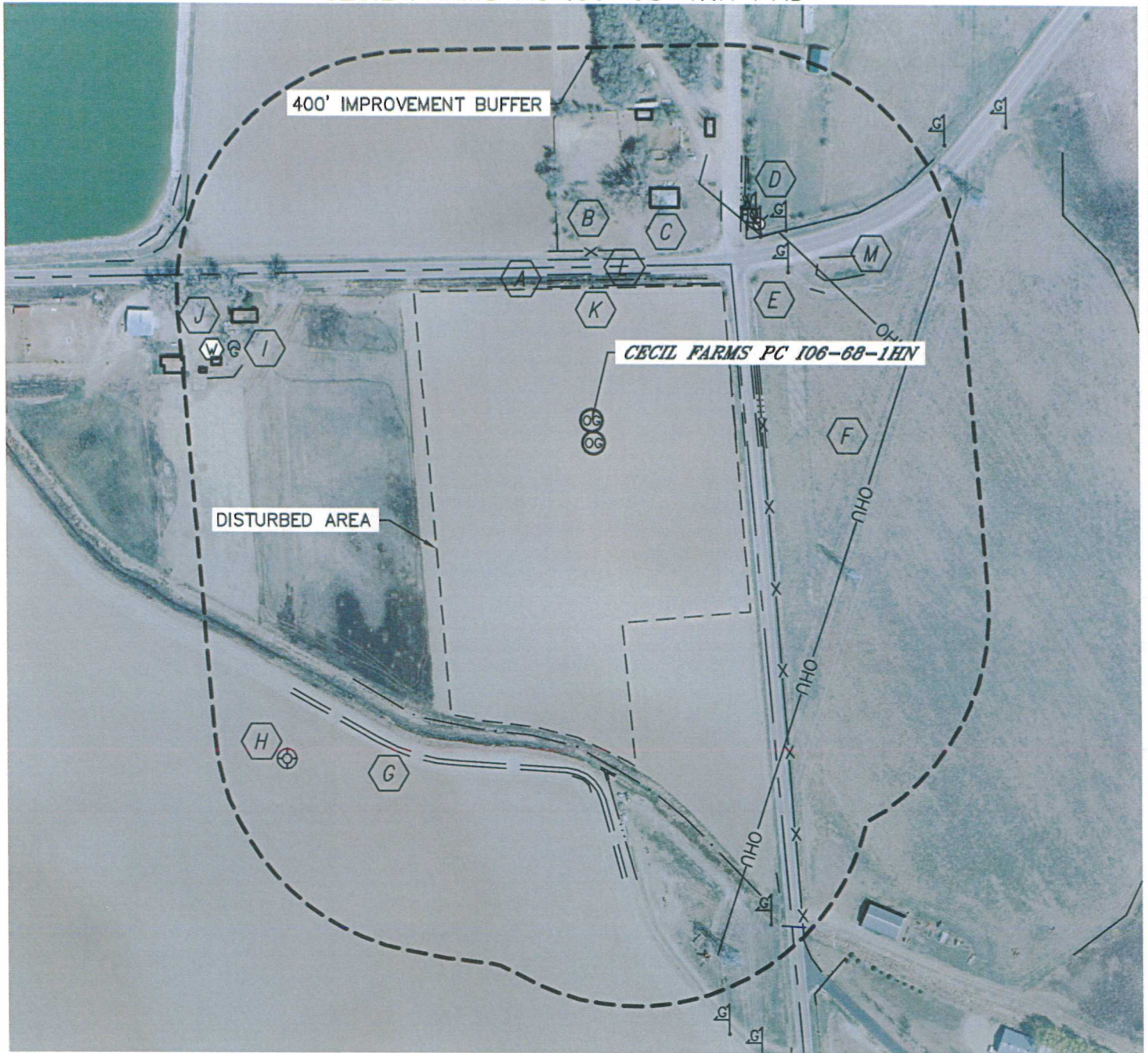


LOCATION DRAWING

CECIL FARMS PC 106-68-1HN PAD

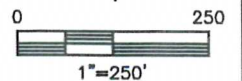
SECTION: 6
TOWNSHIP: 6N
RANGE: 66W



IMPROVEMENTS:

- | | | |
|---|--|-----------------------------|
| (A) COUNTY ROAD 74 243' N
COUNTY ROAD 27 254' E | (G) FIELD ROAD 580' S | (M) LOW AREA 451' NE |
| (B) FENCE 282' N, 402' NE, 286' E | (H) EX. WELLHEAD 764' SW | |
| (C) BUILDING 375', 508', 513', 688' NE,
585', 630', 653', 690' NW | (I) PROPANE TANK 613' NW | |
| (D) WATER MARKER 432' NE
OLD FIRE HYDRANT 434' NE | (J) DOMESTIC WELL 650' NW | |
| (E) GAS LINE MARKER 415', 457' NE | (K) DITCH 223' N, 414', 430' NE, 241', 290' E,
534' SW, 593', 601' S | |
| (F) OVERHEAD UTILITY 476' SE, 422' NE, | (L) BARROW DITCH 234' N, 399' & 404' NE, 282' E | |

NEAREST: BUILDING 375' NE, PUBLIC ROAD 243' N (CR 74),
ABOVE GROUND UTILITY 422' NE, RAILROAD 2890' N (ABANDONED), PROPERTY LINE 255' N



DATE: rev 7/10/2013
PROJECT#: 2012022