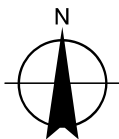


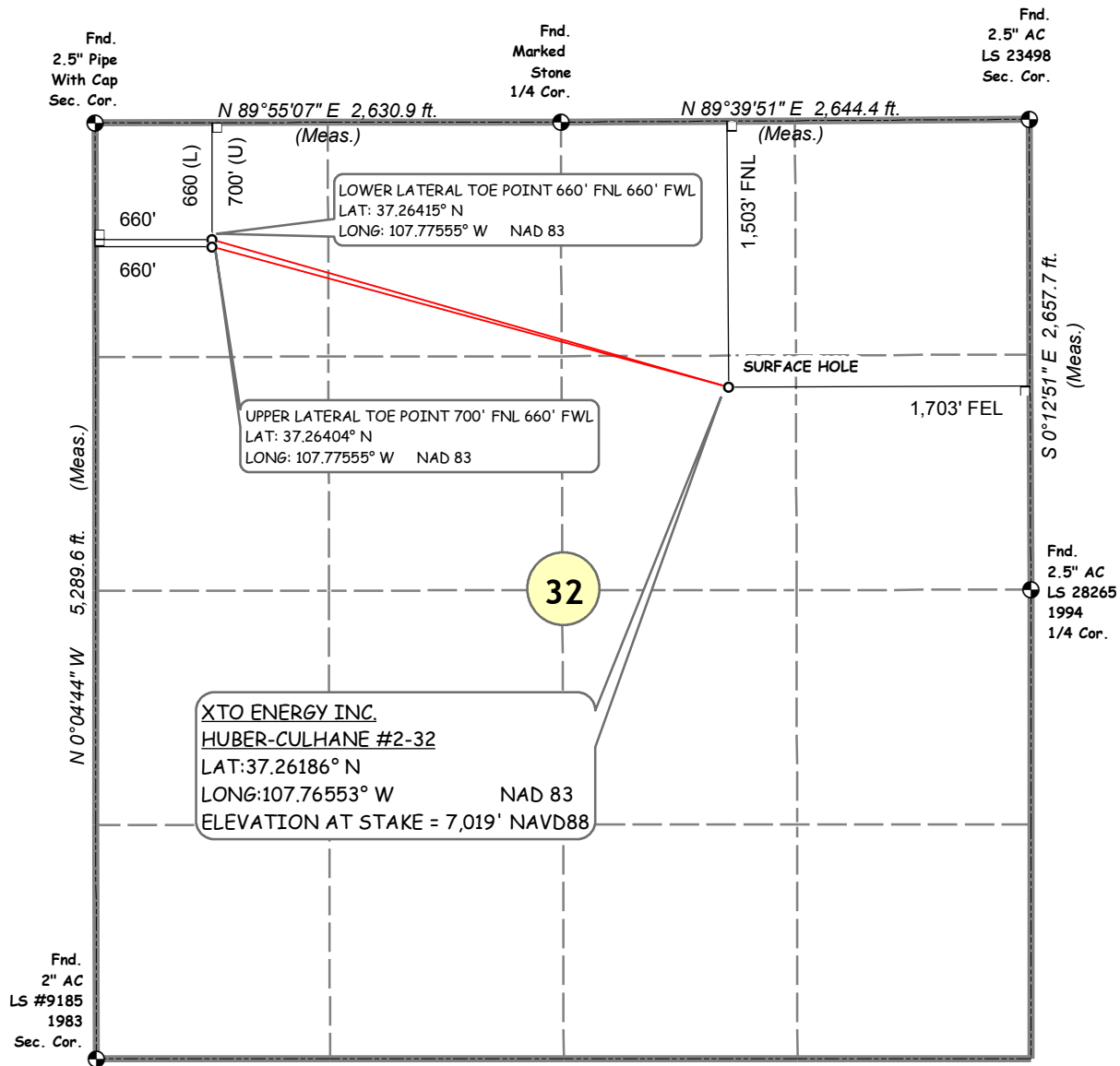
**XTO ENERGY INC.
HUBER-CULHANE #2-32**

1 inch equals 1,000 feet

0 500 1,000
Feet



**SURFACE HOLE: 1,503' FNL, 1,703' FEL
SECTION 32, T-35-N, R-08-W, N.M.P.M.,
LA PLATA COUNTY, COLORADO
LAT: 37.26186° N LONG: 107.76553° W NAD 83
ELEVATION AT STAKE = 7,019' NAVD88**



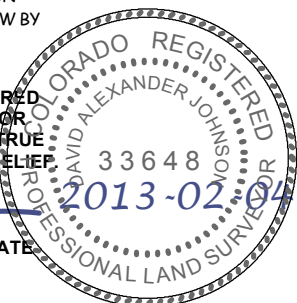
NOTES:

1. SURFACE USE IS EXISTING WELL LOCATION AND GRAZING.
2. SEE ATTACHED ADDENDUM FOR IMPROVEMENTS, AND PROPERTY LINES WITHIN 400' OF PROPOSED WELL.
3. DATE OF SURVEY 22 Oct 2010.
4. BASIS OF ELEVATION = NAVD88 AS PREDICTED BY GEOID09.
5. PDOP OF GPS OBSERVATION OF WELL STAKE = 1.3
6. FOOTAGE DIMENSION FIELD MEASURED AT 90° FROM SECTION LINES.
7. BASIS OF BEARING: BETWEEN MONUMENTS FOUND AT THE SOUTHWEST CORNER AND THE NORTHWEST CORNER OF SECTION 32, T-35-N, R-08-W, N.M.P.M., COLORADO, LINE BEARS N0°04'44\"/>

**THIS IS TO CERTIFY THAT THE ABOVE PLAT WAS PREPARED
FROM FIELD NOTES OF ACTUAL SURVEYS MADE BY ME OR
UNDER MY DIRECT SUPERVISION AND THAT SAME ARE TRUE
AND CORRECT TO THE BEST OF MY KNOWLEDGE AND BELIEF.**

**DAVID ALEXANDER JOHNSON LICENSE NO. 33648
STATE OF COLORADO**

DATE



**LAT: 37°15.7112' N
LONG: 107°45.8945' W
NAD27**

XT0024_SD.mxd 2013_02_04

