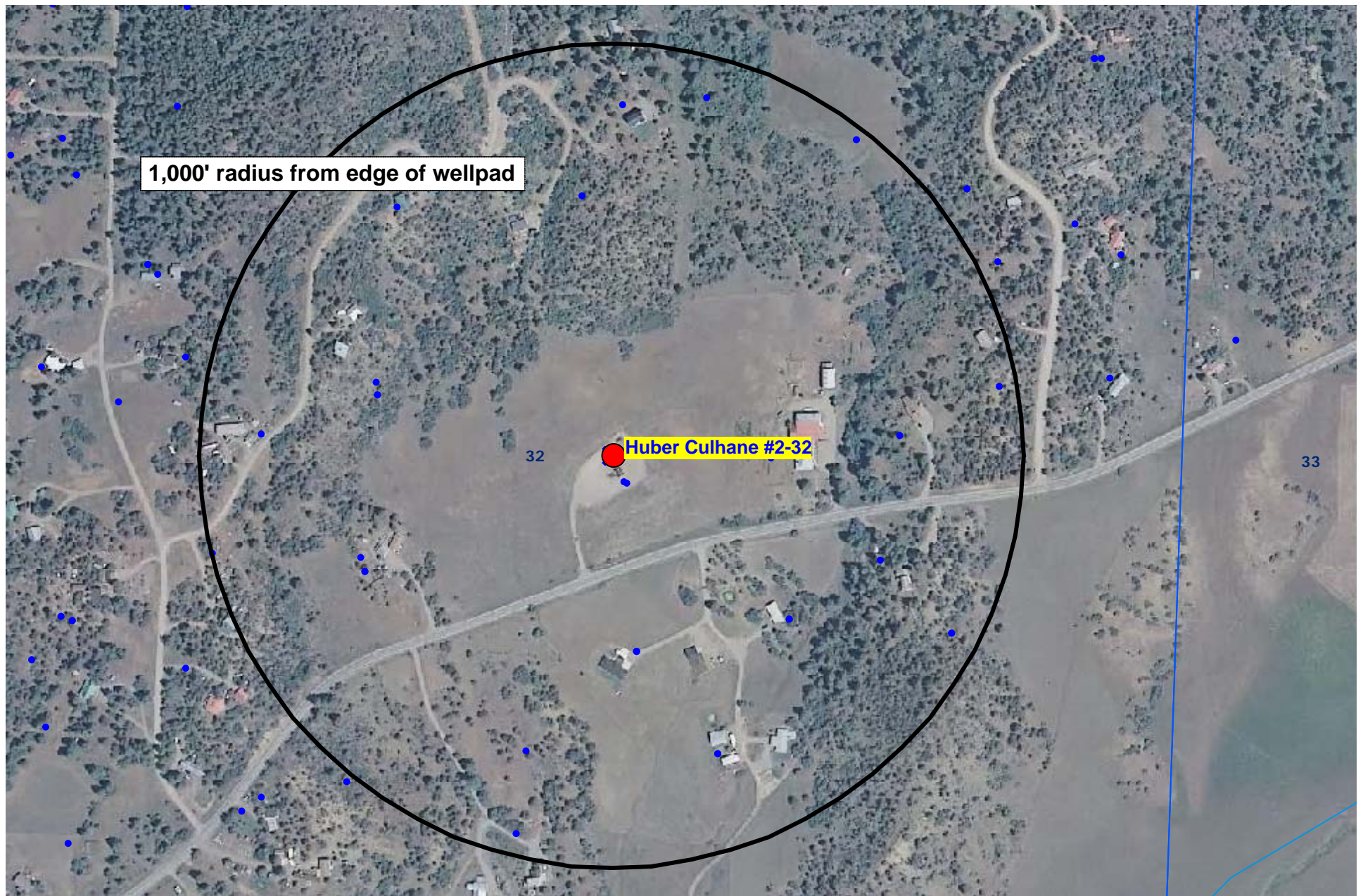


# HYDROLOGY MAP - AERIAL



- Water Wells
- Lakes
- Major Rivers
- Streams
- 300-Foot Stream Buffer

HUBER CULHANE #2-32  
1,503' FNL & 1,703' FEL  
SWNE Sec. 32, T35N, R8W, N.M.P.M  
La Plata County, Colorado

N  
↑  
Scale 1" = 400'