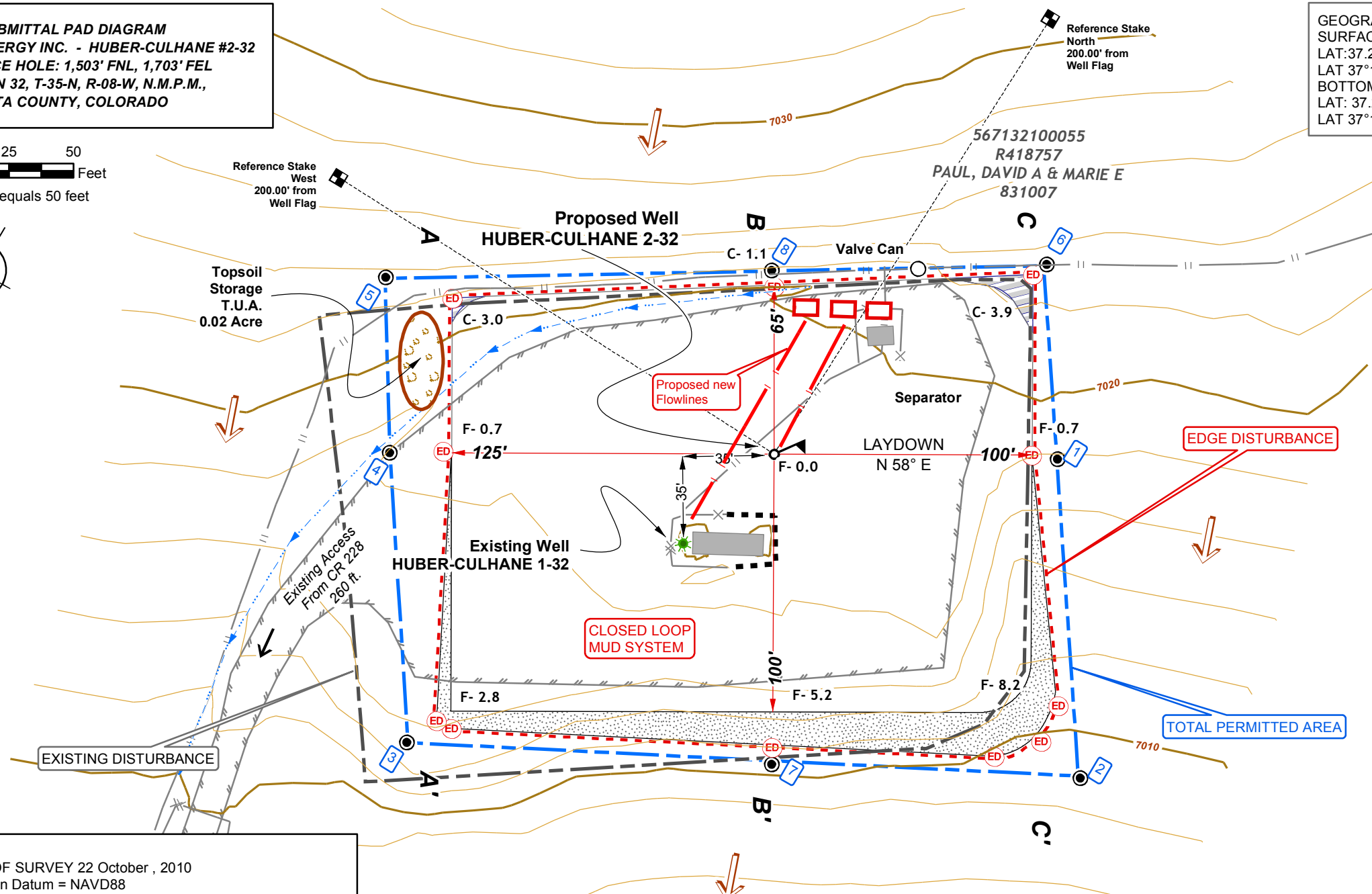


**BLM SUBMITTAL PAD DIAGRAM**  
**XTO ENERGY INC. - HUBER-CULHANE #2-32**  
**SURFACE HOLE: 1,503' FNL, 1,703' FEL**  
**SECTION 32, T-35-N, R-08-W, N.M.P.M.,**  
**LA PLATA COUNTY, COLORADO**

**GEOGRAPHIC POSITIONS**  
**SURFACE**  
 LAT: 37.26186° N LONG: 107.76553° W NAD83  
 LAT 37°15.7112' N LONG 107°45.8945' W NAD27  
**BOTTOM HOLE**  
 LAT: 37.26404° N LONG: 107.77541° W NAD83  
 LAT 37°15.8423' N LONG 107°46.4874' W NAD27

0 25 50  
 Feet  
 1 inch equals 50 feet



**Legend**

- EDGE OF DISTURBANCE CORNERS
- SET CARSONITE MARKER
- SET REFERENCE STAKE
- SLOPE DIRECTION
- VALVE CAN
- WH HUBER CULHANE 1-32
- WF HUBER CULHANE 2-32
- ABATEMENT WALL
- DRAINAGE
- EDGE DRIVING SURFACE
- FENCE
- PAD DIMENSION
- REF\_STAKE
- XTO\_GAS\_AND\_WATER PIPE
- 10 FT INDEX CONTOUR
- 2FT CONTOUR
- EXISTING DRIVING SURFACE
- EXISTING DISTURBANCE
- TOTAL PERMITTED AREA
- EDGE OF DISTURBANCE
- CUT
- FILL
- PAD

**NOTES:**  
 1- DATE OF SURVEY 22 October , 2010  
 2- Elevation Datum = NAVD88  
 3-The locations of underground utilities depicted are approximate, actual locations of underground utilities MUST be field verified prior to construction.  
 4-PROPOSED FLAT PAD SIZE = 0.85 ACRES  
 5-TOTAL DISTURBANCE = 0.93 ACRES  
 6- EXISTING DISTURBANCE= 0.91 ACRES  
 7- PAD SIZE AFTER RECLAMATION = 0.85 ACRE

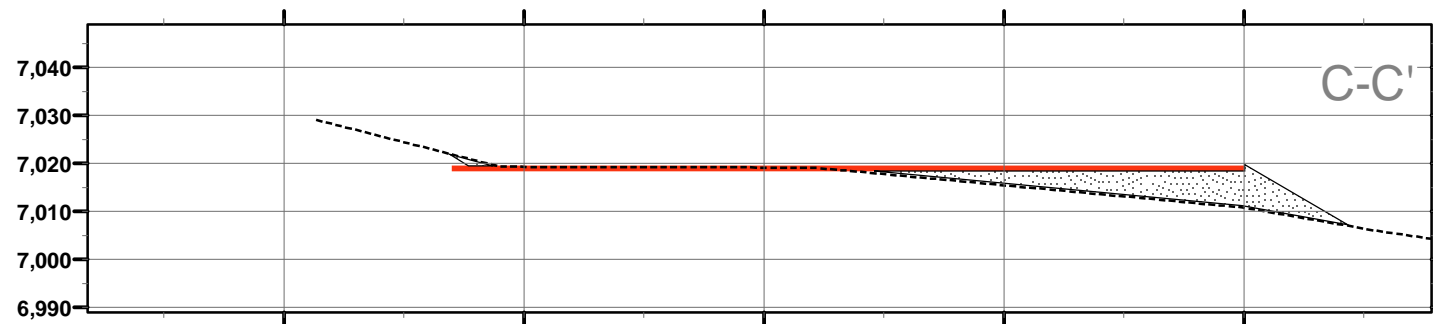
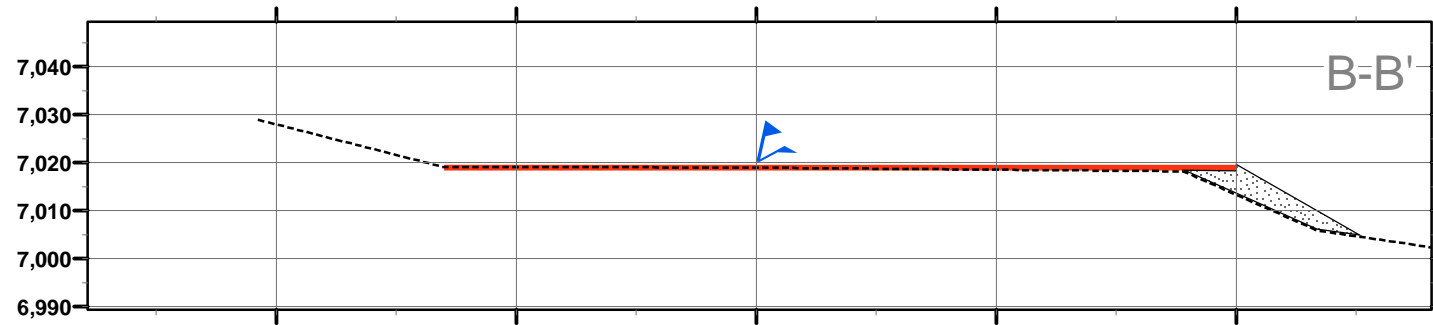
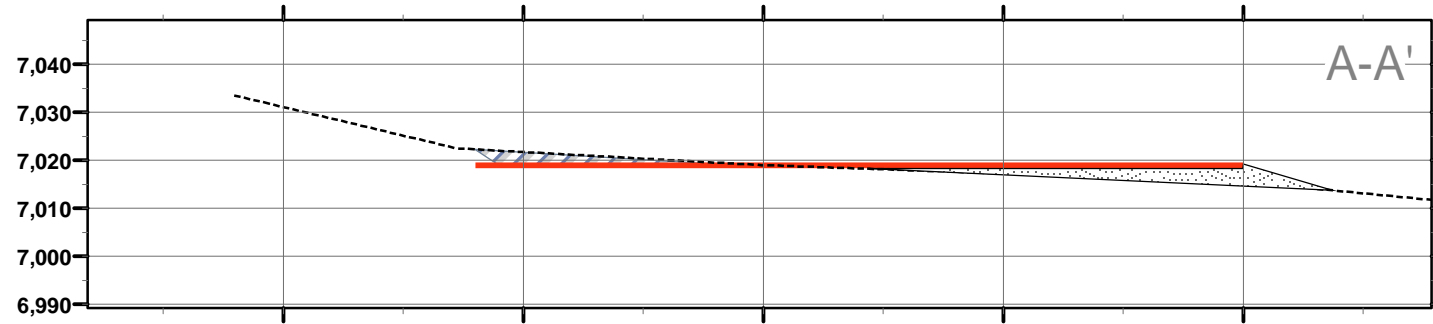
**WELL TO BE DRILLED WITH CLOSED LOOP MUD SYSTEM WITH ABOVE GROUND STEEL CONTAINER**

XTO024\_GND\_PLAN 2010-11-21

**JMAS**  
 JOHNSON MAPPING AND SURVEYING, LLC  
 PO BOX 2174  
 FARMINGTON NM 87499-2174  
 505-360-8029  
 ALEX@JOHNSONMAPPING.BIZ

PROPOSED PAD CROSS SECTIONS  
 X-SECTION PROFILES - 1 inch equals 40 feet

**CUT AND FILL X-SECTIONS**  
**XTO ENERGY INC. HUBER-CULHANE #2-32**  
**SURFACE HOLE: 1,503' FNL, 1,703' FEL**  
**SECTION 32, T-35-N, R-08-W, N.M.P.M.,**  
**LA PLATA COUNTY, COLORADO**



**NAD 83**  
**LAT:37.26186° N**  
**LONG:107.76553° W**

**NAD 27**  
**LAT 37°15.7112' N**  
**LONG 107°45.8945' W**

NOTES:  
 1-DATE OF FIELD SURVEY 8 Jun 2007, 22 Oct 2010  
 2-THE LOCATIONS OF UNDERGROUND UTILITIES DEPICTED ARE APPROXIMATE. ACTUAL LOCATIONS OF UNDERGROUND UTILITIES MUST BE FIELD VERIFIED PRIOR TO CONSTRUCTION.  
 3-ELEVATION DATUM = NAVD88

XTO024\_X-S.MXD 2010\_10\_26

**JMAS**  
 JOHNSON MAPPING  
 AND SURVEYING, LLC  
 PO BOX 2174  
 FARMINGTON NM 87499-2174  
 505-360-8029  
 ALEX@JOHNSONMAPPING.BIZ