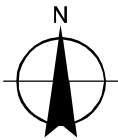
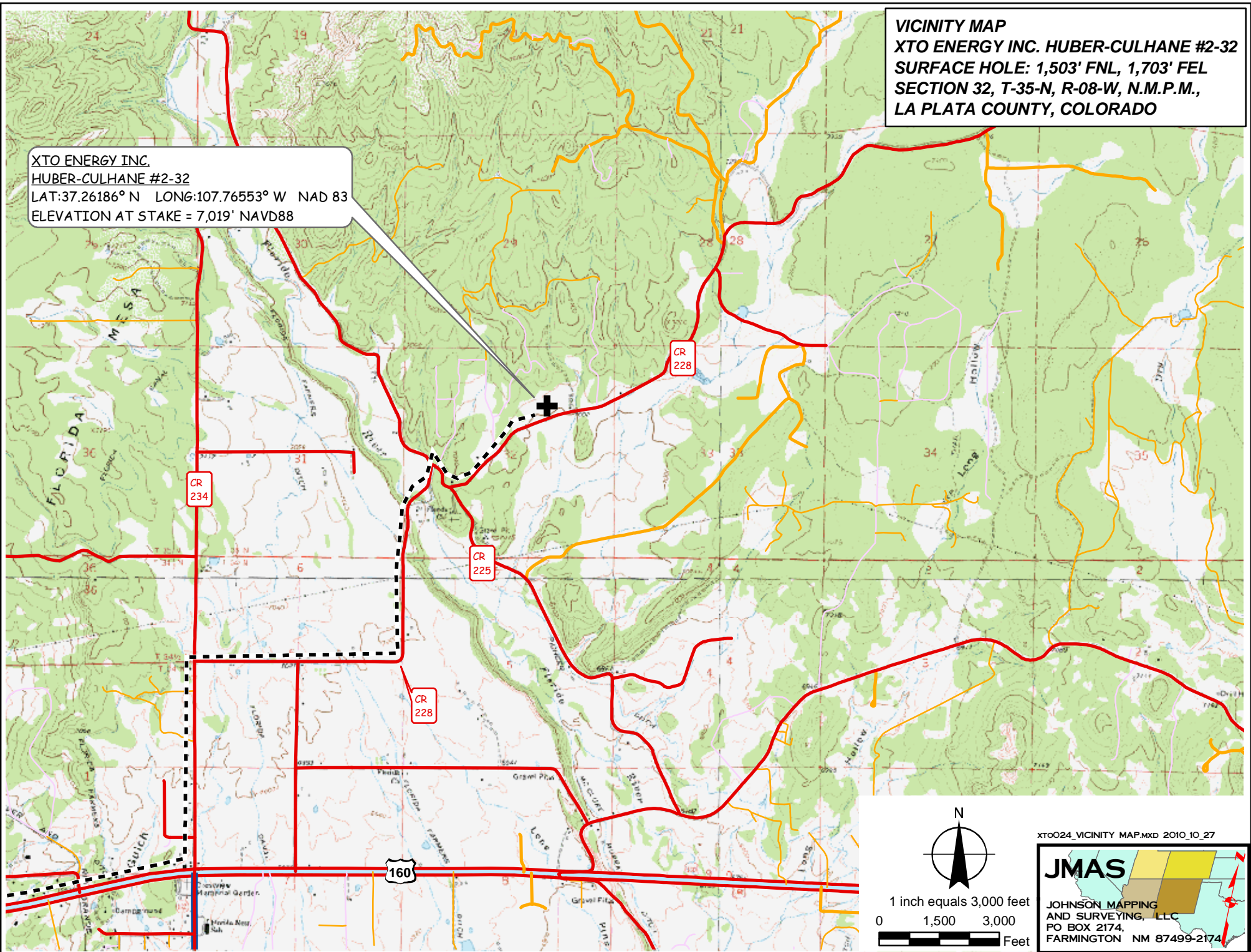


VICINITY MAP
XTO ENERGY INC. HUBER-CULHANE #2-32
SURFACE HOLE: 1,503' FNL, 1,703' FEL
SECTION 32, T-35-N, R-08-W, N.M.P.M.,
LA PLATA COUNTY, COLORADO

XTO ENERGY INC.
HUBER-CULHANE #2-32
LAT:37.26186° N LONG:107.76553° W NAD 83
ELEVATION AT STAKE = 7,019' NAVD88



1 inch equals 3,000 feet
0 1,500 3,000
Feet

xt0024_VICINITY MAP.MXD 2010_10_27

JMAS
JOHNSON MAPPING
AND SURVEYING, LLC
PO BOX 2174,
FARMINGTON NM 87499-2174