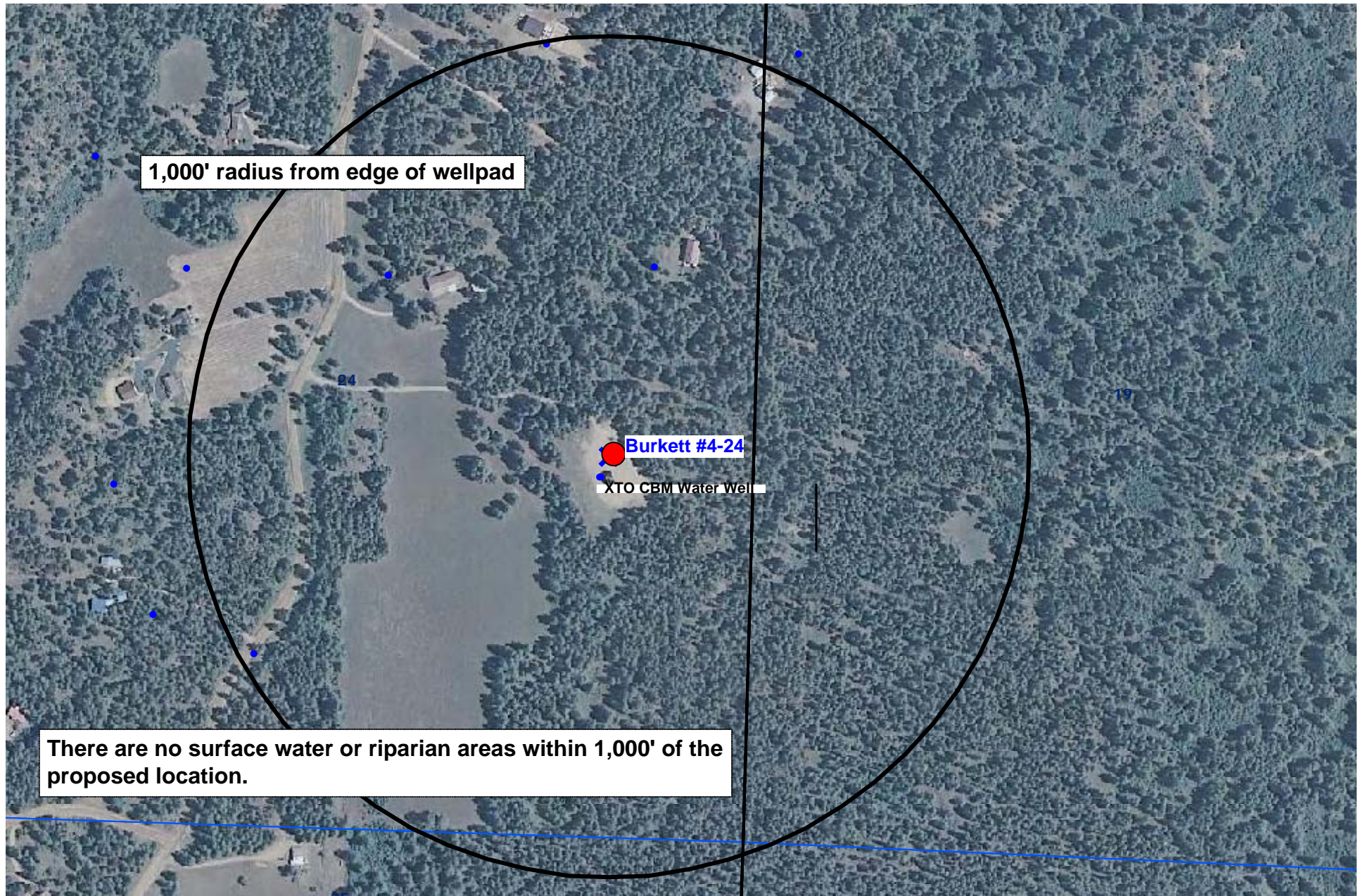


HYDROLOGY MAP - AERIAL



There are no surface water or riparian areas within 1,000' of the proposed location.

- Water Wells
- Lakes
- Major Rivers
- Streams
- 300-Foot Stream Buffer

BURKETT #4-24
1,124' FSL & 421' FEL
SESE Sec. 24, T35N, R8W, N.M.P.M
La Plata County, Colorado

↑ N
Scale 1" = 400'