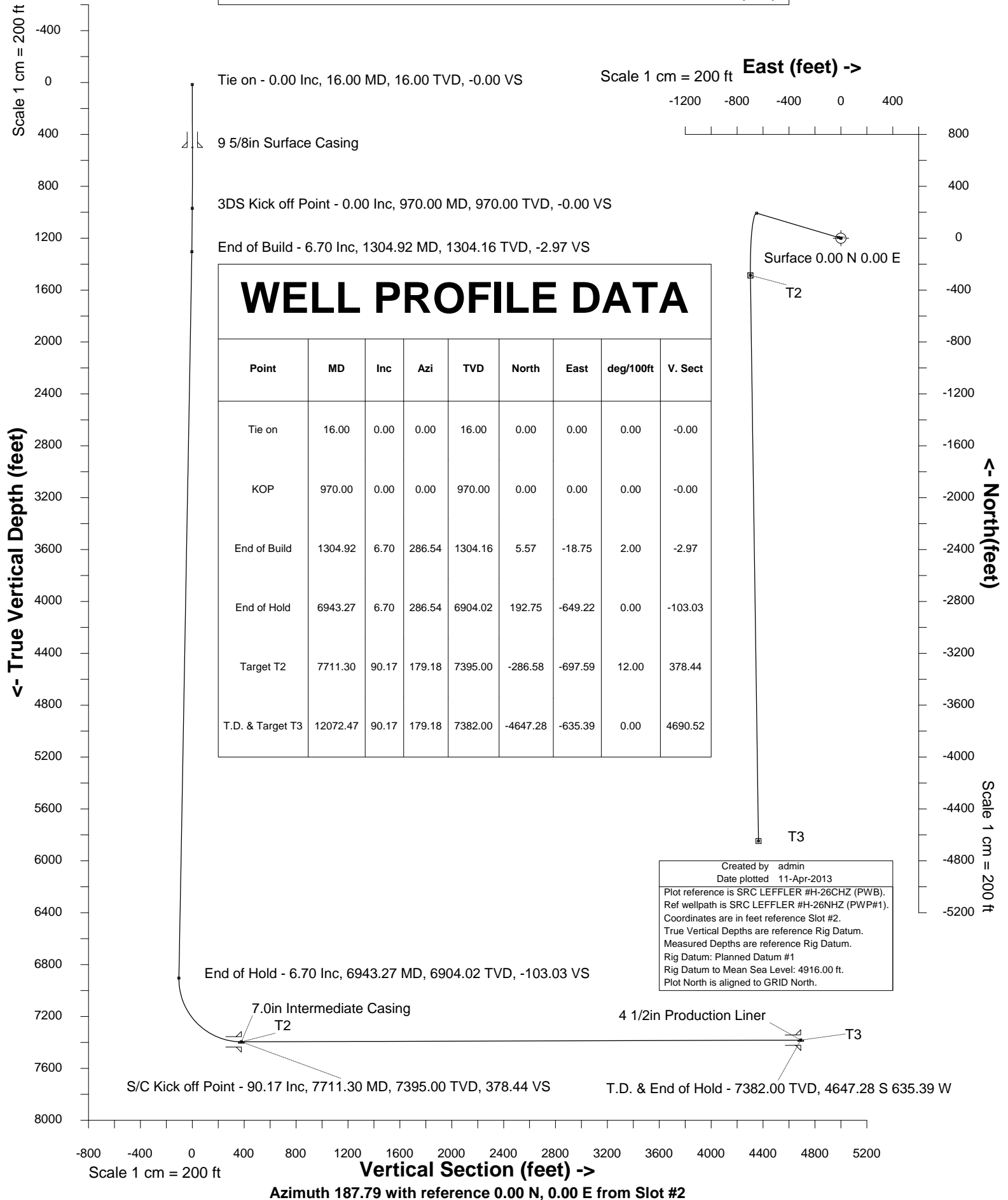


SYNERGY RESOURCES

Location	Weld County, CO, USA(Imported)	Slot	Slot #2
Field	Wattenberg	Well	SRC LEFFLER #H-26CHZ
Installation	SRC LEFFLER	Wellbore	SRC LEFFLER #H-26CHZ (PWB)





SYSDRILL
Well Design Combined Report
Wellbore: SRC LEFFLER #H-26CHZ (PWB)
Wellpath: SRC LEFFLER #H-26NHZ (PWP#1)

Wellhead Details

Name	Northing	Easting	Latitude	Longitude	North	East
Slot #2	1445134.1250	3208163.6520	N40 33 10.3655	W104 45 3.1816	0.53N	22.49E

Site Details

Name	Northing	Easting	Coord System Name	North Alignment
SRC LEFFLER	1445133.5911	3208141.1650	CO83-NF on NORTH AMERICAN DATUM 1983 datum	Grid

Summary Wellpath

MD[ft]	Inc[deg]	Azi[deg]	TVD[ft]	North[ft]	East[ft]	Dogleg [deg/100ft]	Vertical Section[ft]	Northing	Easting
16.00	0.00	0.000	16.00	0.00N	0.00E		0.00	1445134.13	3208163.65
970.00	0.00	0.000	970.00	0.00N	0.00E	==>	0.00	1445134.13	3208163.65
1304.92	6.70	286.540	1304.16	5.57N	18.75W	2.00	-2.97	1445139.69	3208144.91
6943.27	6.70	286.540	6904.02	192.75N	649.22W	==>	-103.03	1445326.87	3207514.45
7711.30	90.17	179.180	7395.00	286.58S	697.59W	12.00	378.44	1444847.55	3207466.08
12072.47	90.17	179.180	7382.00	4647.28S	635.39W	==>	4690.52	1440486.99	3207528.28

Interpolated Wellpath

MD[ft]	Inc[deg]	Azi[deg]	TVD[ft]	North[ft]	East[ft]	Dogleg [deg/100ft]	Vertical Section[ft]	Northing	Easting
0.00	0.00	0.000	0.00	0.00N	0.00E		0.00	1445134.13	3208163.65
16.00	0.00	0.000	16.00	0.00N	0.00E	==>	0.00	1445134.13	3208163.65
100.00	0.00	0.000	100.00	0.00N	0.00E	==>	0.00	1445134.13	3208163.65
200.00	0.00	0.000	200.00	0.00N	0.00E	==>	0.00	1445134.13	3208163.65
300.00	0.00	0.000	300.00	0.00N	0.00E	==>	0.00	1445134.13	3208163.65
400.00	0.00	0.000	400.00	0.00N	0.00E	==>	0.00	1445134.13	3208163.65
500.00	0.00	0.000	500.00	0.00N	0.00E	==>	0.00	1445134.13	3208163.65
600.00	0.00	0.000	600.00	0.00N	0.00E	==>	0.00	1445134.13	3208163.65
700.00	0.00	0.000	700.00	0.00N	0.00E	==>	0.00	1445134.13	3208163.65
800.00	0.00	0.000	800.00	0.00N	0.00E	==>	0.00	1445134.13	3208163.65
900.00	0.00	0.000	900.00	0.00N	0.00E	==>	0.00	1445134.13	3208163.65
954.00	0.00	0.000	954.00	0.00N	0.00E	==>	0.00	1445134.13	3208163.65
970.00	0.00	0.000	970.00	0.00N	0.00E	==>	0.00	1445134.13	3208163.65
1054.00	1.68	286.540	1053.99	0.35N	1.18W	2.00	-0.19	1445134.48	3208162.47
1154.00	3.68	286.540	1153.87	1.68N	5.66W	2.00	-0.90	1445135.81	3208157.99
1254.00	5.68	286.540	1253.54	4.00N	13.48W	2.00	-2.14	1445138.13	3208150.17
1300.00	6.60	286.540	1299.27	5.40N	18.20W	2.00	-2.89	1445139.53	3208145.45
1304.92	6.70	286.540	1304.16	5.57N	18.75W	2.00	-2.97	1445139.69	3208144.91
1400.00	6.70	286.540	1398.59	8.72N	29.38W	==>	-4.66	1445142.85	3208134.27
1500.00	6.70	286.540	1497.91	12.04N	40.56W	==>	-6.44	1445146.17	3208123.09
1600.00	6.70	286.540	1597.22	15.36N	51.74W	==>	-8.21	1445149.49	3208111.91
1700.00	6.70	286.540	1696.54	18.68N	62.92W	==>	-9.99	1445152.81	3208100.73
1800.00	6.70	286.540	1795.86	22.00N	74.11W	==>	-11.76	1445156.13	3208089.55
1900.00	6.70	286.540	1895.18	25.32N	85.29W	==>	-13.53	1445159.45	3208078.37
2000.00	6.70	286.540	1994.49	28.64N	96.47W	==>	-15.31	1445162.77	3208067.19
2100.00	6.70	286.540	2093.81	31.96N	107.65W	==>	-17.08	1445166.08	3208056.00
2200.00	6.70	286.540	2193.13	35.28N	118.83W	==>	-18.86	1445169.40	3208044.82
2300.00	6.70	286.540	2292.45	38.60N	130.02W	==>	-20.63	1445172.72	3208033.64
2400.00	6.70	286.540	2391.76	41.92N	141.20W	==>	-22.41	1445176.04	3208022.46
2500.00	6.70	286.540	2491.08	45.24N	152.38W	==>	-24.18	1445179.36	3208011.28
2600.00	6.70	286.540	2590.40	48.56N	163.56W	==>	-25.96	1445182.68	3208000.10
2700.00	6.70	286.540	2689.71	51.88N	174.74W	==>	-27.73	1445186.00	3207988.91
2800.00	6.70	286.540	2789.03	55.20N	185.92W	==>	-29.51	1445189.32	3207977.73
2900.00	6.70	286.540	2888.35	58.52N	197.11W	==>	-31.28	1445192.64	3207966.55
3000.00	6.70	286.540	2987.67	61.84N	208.29W	==>	-33.05	1445195.96	3207955.37
3100.00	6.70	286.540	3086.98	65.16N	219.47W	==>	-34.83	1445199.28	3207944.19
3200.00	6.70	286.540	3186.30	68.48N	230.65W	==>	-36.60	1445202.60	3207933.01
3300.00	6.70	286.540	3285.62	71.80N	241.83W	==>	-38.38	1445205.92	3207921.83
3400.00	6.70	286.540	3384.94	75.12N	253.02W	==>	-40.15	1445209.24	3207910.64
3500.00	6.70	286.540	3484.25	78.44N	264.20W	==>	-41.93	1445212.56	3207899.46
3600.00	6.70	286.540	3583.57	81.76N	275.38W	==>	-43.70	1445215.88	3207888.28
3700.00	6.70	286.540	3682.89	85.08N	286.56W	==>	-45.48	1445219.20	3207877.10
3800.00	6.70	286.540	3782.21	88.40N	297.74W	==>	-47.25	1445222.52	3207865.92
3900.00	6.70	286.540	3881.52	91.72N	308.92W	==>	-49.02	1445225.84	3207854.74
4000.00	6.70	286.540	3980.84	95.04N	320.11W	==>	-50.80	1445229.16	3207843.56
4100.00	6.70	286.540	4080.16	98.36N	331.29W	==>	-52.57	1445232.48	3207832.37
4200.00	6.70	286.540	4179.48	101.68N	342.47W	==>	-54.35	1445235.80	3207821.19
4300.00	6.70	286.540	4278.79	105.00N	353.65W	==>	-56.12	1445239.12	3207810.01
4400.00	6.70	286.540	4378.11	108.32N	364.83W	==>	-57.90	1445242.44	3207798.83
4500.00	6.70	286.540	4477.43	111.64N	376.02W	==>	-59.67	1445245.76	3207787.65
4600.00	6.70	286.540	4576.75	114.96N	387.20W	==>	-61.45	1445249.08	3207776.47
4700.00	6.70	286.540	4676.06	118.28N	398.38W	==>	-63.22	1445252.40	3207765.28
4800.00	6.70	286.540	4775.38	121.60N	409.56W	==>	-64.99	1445255.72	3207754.10

All data is in Feet unless otherwise stated
Coordinates are from Slot MD's are from Rig and TVD's are from Rig (Planned Datum #1 4916.0ft above Mean Sea Level)
Vertical Section is from 0.00N 0.00E on azimuth 187.790 degrees
Bottom hole distance is 4690.52 Feet on azimuth 187.79 degrees from Wellhead
Calculation method uses Minimum Curvature method
Prepared by Peterson Energy
Date Printed: 11-Apr-2013



SYSDRILL
Well Design Combined Report
Wellbore: SRC LEFFLER #H-26CHZ (PWB)
Wellpath: SRC LEFFLER #H-26NHZ (PWP#1)

Interpolated Wellpath

MD[ft]	Inc[deg]	Azi[deg]	TVD[ft]	North[ft]	East[ft]	Dogleg [deg/100ft]	Vertical Section[ft]	Northing	Easting
4900.00	6.70	286.540	4874.70	124.92N	420.74W	==>	-66.77	1445259.04	3207742.92
5000.00	6.70	286.540	4974.01	128.24N	431.93W	==>	-68.54	1445262.36	3207731.74
5100.00	6.70	286.540	5073.33	131.56N	443.11W	==>	-70.32	1445265.68	3207720.56
5200.00	6.70	286.540	5172.65	134.88N	454.29W	==>	-72.09	1445269.00	3207709.38
5300.00	6.70	286.540	5271.97	138.20N	465.47W	==>	-73.87	1445272.32	3207698.20
5400.00	6.70	286.540	5371.28	141.52N	476.65W	==>	-75.64	1445275.64	3207687.01
5500.00	6.70	286.540	5470.60	144.83N	487.83W	==>	-77.42	1445278.96	3207675.83
5600.00	6.70	286.540	5569.92	148.15N	499.02W	==>	-79.19	1445282.28	3207664.65
5700.00	6.70	286.540	5669.24	151.47N	510.20W	==>	-80.97	1445285.59	3207653.47
5800.00	6.70	286.540	5768.55	154.79N	521.38W	==>	-82.74	1445288.91	3207642.29
5900.00	6.70	286.540	5867.87	158.11N	532.56W	==>	-84.51	1445292.23	3207631.11
6000.00	6.70	286.540	5967.19	161.43N	543.74W	==>	-86.29	1445295.55	3207619.93
6100.00	6.70	286.540	6066.51	164.75N	554.93W	==>	-88.06	1445298.87	3207608.74
6200.00	6.70	286.540	6165.82	168.07N	566.11W	==>	-89.84	1445302.19	3207597.56
6300.00	6.70	286.540	6265.14	171.39N	577.29W	==>	-91.61	1445305.51	3207586.38
6400.00	6.70	286.540	6364.46	174.71N	588.47W	==>	-93.39	1445308.83	3207575.20
6500.00	6.70	286.540	6463.78	178.03N	599.65W	==>	-95.16	1445312.15	3207564.02
6600.00	6.70	286.540	6563.09	181.35N	610.84W	==>	-96.94	1445315.47	3207552.84
6700.00	6.70	286.540	6662.41	184.67N	622.02W	==>	-98.71	1445318.79	3207541.65
6800.00	6.70	286.540	6761.73	187.99N	633.20W	==>	-100.48	1445322.11	3207530.47
6900.00	6.70	286.540	6861.05	191.31N	644.38W	==>	-102.26	1445325.43	3207519.29
6943.27	6.70	286.540	6904.02	192.75N	649.22W	==>	-103.03	1445326.87	3207514.45
7000.00	8.00	232.100	6960.35	191.26N	655.51W	12.00	-100.70	1445325.38	3207508.16
7100.00	17.96	199.440	7057.78	172.38N	666.18W	12.00	-80.55	1445306.50	3207497.50
7200.00	29.46	190.650	7149.21	133.54N	675.89W	12.00	-40.75	1445267.66	3207487.79
7300.00	41.23	186.550	7230.65	76.43N	684.22W	12.00	16.97	1445210.55	3207479.45
7400.00	53.09	184.030	7298.54	3.54N	690.82W	12.00	90.07	1445137.67	3207472.86
7500.00	64.98	182.200	7349.90	81.92S	695.39W	12.00	175.37	1445052.20	3207468.29
7600.00	76.90	180.700	7382.50	176.24S	697.73W	12.00	269.13	1444957.89	3207465.95
7700.00	88.82	179.330	7394.90	275.28S	697.74W	12.00	367.26	1444858.85	3207465.94
7711.30	90.17	179.180	7395.00	286.58S	697.59W	12.00	378.44	1444847.55	3207466.08
7800.00	90.17	179.180	7394.74	375.27S	696.33W	==>	466.14	1444758.87	3207467.35
7900.00	90.17	179.180	7394.44	475.26S	694.90W	==>	565.01	1444658.88	3207468.77
8000.00	90.17	179.180	7394.14	575.25S	693.47W	==>	663.89	1444558.89	3207470.20
8100.00	90.17	179.180	7393.84	675.24S	692.05W	==>	762.76	1444458.91	3207471.63
8200.00	90.17	179.180	7393.54	775.23S	690.62W	==>	861.64	1444358.92	3207473.05
8300.00	90.17	179.180	7393.25	875.22S	689.20W	==>	960.51	1444258.93	3207474.48
8400.00	90.17	179.180	7392.95	975.21S	687.77W	==>	1059.39	1444158.95	3207475.90
8500.00	90.17	179.180	7392.65	1075.20S	686.34W	==>	1158.26	1444058.96	3207477.33
8600.00	90.17	179.180	7392.35	1175.19S	684.92W	==>	1257.14	1443958.98	3207478.76
8700.00	90.17	179.180	7392.05	1275.18S	683.49W	==>	1356.01	1443858.99	3207480.18
8800.00	90.17	179.180	7391.75	1375.17S	682.06W	==>	1454.88	1443759.00	3207481.61
8900.00	90.17	179.180	7391.46	1475.15S	680.64W	==>	1553.76	1443659.02	3207483.03
9000.00	90.17	179.180	7391.16	1575.14S	679.21W	==>	1652.63	1443559.03	3207484.46
9100.00	90.17	179.180	7390.86	1675.13S	677.79W	==>	1751.51	1443459.04	3207485.89
9200.00	90.17	179.180	7390.56	1775.12S	676.36W	==>	1850.38	1443359.06	3207487.31
9300.00	90.17	179.180	7390.26	1875.11S	674.93W	==>	1949.26	1443259.07	3207488.74
9400.00	90.17	179.180	7389.97	1975.10S	673.51W	==>	2048.13	1443159.09	3207490.17
9500.00	90.17	179.180	7389.67	2075.09S	672.08W	==>	2147.01	1443059.10	3207491.59
9600.00	90.17	179.180	7389.37	2175.08S	670.65W	==>	2245.88	1442959.11	3207493.02
9700.00	90.17	179.180	7389.07	2275.07S	669.23W	==>	2344.75	1442859.13	3207494.44
9800.00	90.17	179.180	7388.77	2375.06S	667.80W	==>	2443.63	1442759.14	3207495.87
9900.00	90.17	179.180	7388.48	2475.05S	666.38W	==>	2542.50	1442659.15	3207497.30
10000.00	90.17	179.180	7388.18	2575.04S	664.95W	==>	2641.38	1442559.17	3207498.72
10100.00	90.17	179.180	7387.88	2675.03S	663.52W	==>	2740.25	1442459.18	3207500.15
10200.00	90.17	179.180	7387.58	2775.02S	662.10W	==>	2839.13	1442359.19	3207501.58
10300.00	90.17	179.180	7387.28	2875.01S	660.67W	==>	2938.00	1442259.21	3207503.00
10400.00	90.17	179.180	7386.99	2975.00S	659.24W	==>	3036.88	1442159.22	3207504.43
10500.00	90.17	179.180	7386.69	3074.99S	657.82W	==>	3135.75	1442059.24	3207505.85
10600.00	90.17	179.180	7386.39	3174.97S	656.39W	==>	3234.63	1441959.25	3207507.28
10700.00	90.17	179.180	7386.09	3274.96S	654.97W	==>	3333.50	1441859.26	3207508.71
10800.00	90.17	179.180	7385.79	3374.95S	653.54W	==>	3432.37	1441759.28	3207510.13
10900.00	90.17	179.180	7385.49	3474.94S	652.11W	==>	3531.25	1441659.29	3207511.56
11000.00	90.17	179.180	7385.20	3574.93S	650.69W	==>	3630.12	1441559.30	3207512.98
11100.00	90.17	179.180	7384.90	3674.92S	649.26W	==>	3729.00	1441459.32	3207514.41
11200.00	90.17	179.180	7384.60	3774.91S	647.84W	==>	3827.87	1441359.33	3207515.84
11300.00	90.17	179.180	7384.30	3874.90S	646.41W	==>	3926.75	1441259.35	3207517.26
11400.00	90.17	179.180	7384.00	3974.89S	644.98W	==>	4025.62	1441159.36	3207518.69
11500.00	90.17	179.180	7383.71	4074.88S	643.56W	==>	4124.50	1441059.37	3207520.12
11600.00	90.17	179.180	7383.41	4174.87S	642.13W	==>	4223.37	1440959.39	3207521.54
11700.00	90.17	179.180	7383.11	4274.86S	640.70W	==>	4322.25	1440859.40	3207522.97
11800.00	90.17	179.180	7382.81	4374.85S	639.28W	==>	4421.12	1440759.41	3207524.39
11900.00	90.17	179.180	7382.51	4474.84S	637.85W	==>	4519.99	1440659.43	3207525.82
12000.00	90.17	179.180	7382.22	4574.83S	636.43W	==>	4618.87	1440559.44	3207527.25
12072.47	90.17	179.180	7382.00	4647.28S	635.39W	==>	4690.52	1440486.99	3207528.28

All data is in Feet unless otherwise stated
Coordinates are from Slot MD's are from Rig and TVD's are from Rig (Planned Datum #1 4916.0ft above Mean Sea Level)
Vertical Section is from 0.00N 0.00E on azimuth 187.790 degrees
Bottom hole distance is 4690.52 Feet on azimuth 187.79 degrees from Wellhead
Calculation method uses Minimum Curvature method
Prepared by Peterson Energy
Date Printed: 11-Apr-2013



SYSDRILL
Well Design Combined Report
Wellbore: SRC LEFFLER #H-26CHZ (PWB)
Wellpath: SRC LEFFLER #H-26NHZ (PWP#1)

Hole Sections

Diameter [in]	Start MD[ft]	Start TVD[ft]	Start North[ft]	Start East[ft]	End MD[ft]	End TVD[ft]	End North[ft]	End East[ft]	Wellbore
12 1/4	16.00	16.00	0.00N	0.00E	500.00	500.00	0.00N	0.00E	SRC LEFFLER #H-26CHZ (PWB)
8 5/8	500.00	500.00	0.00N	0.00E	7711.00	7395.00	286.28S	697.60W	SRC LEFFLER #H-26CHZ (PWB)
6 1/8	7711.00	7395.00	286.28S	697.60W	12072.47	7382.00	4647.28S	635.39W	SRC LEFFLER #H-26CHZ (PWB)

Casings

Name	Top MD[ft]	Top TVD[ft]	Top North[ft]	Top East[ft]	Shoe MD[ft]	Shoe TVD[ft]	Shoe North[ft]	Shoe East[ft]	Wellbore
9 5/8in Surface Casing	16.00	16.00	0.00N	0.00E	500.00	500.00	0.00N	0.00E	SRC LEFFLER #H-26CHZ (PWB)
7.0in Intermediate Casing	16.00	16.00	0.00N	0.00E	7711.00	7395.00	286.28S	697.60W	SRC LEFFLER #H-26CHZ (PWB)
4 1/2in Production Liner	6943.00	6903.75	192.74N	649.19W	12072.47	7382.00	4647.28S	635.39W	SRC LEFFLER #H-26CHZ (PWB)

Targets

Name	North[ft]	East[ft]	TVD[ft]	Latitude	Longitude	Northing	Easting	Last Revised
T2	286.58S	697.59W	7395.00	N40 33 7.5920	W104 45 12.2496	1444847.55	3207466.08	8-Apr-2013
T3	4647.28S	635.39W	7382.00	N40 32 24.4985	W104 45 11.9195	1440486.99	3207528.28	8-Apr-2013

Survey Tool Program

Reference	Survey Name	MD[ft]	TVD[ft]	Survey Tool	Error Model
17349	Planned	12072.47	7382.00	WdW Rate Gyro	Standard

Notes

All data is in Feet unless otherwise stated
Coordinates are from Slot MD's are from Rig and TVD's are from Rig (Planned Datum #1 4916.0ft above Mean Sea Level)
Vertical Section is from 0.00N 0.00E on azimuth 187.790 degrees
Bottom hole distance is 4690.52 Feet on azimuth 187.79 degrees from Wellhead
Calculation method uses Minimum Curvature method
Prepared by Peterson Energy
Date Printed: 11-Apr-2013



SYSDRILL
Closest Approach + Clearance Factor Summary Report
Wellbore: SRC LEFFLER #H-26CHZ (PWB)
Wellpath: SRC LEFFLER #H-26NHZ (PWP#1)

Ellipse separations are reported ONLY if BOTH wells have uncertainty data
Only Depth and Magnetic Reference Field error terms are correlated across tie points
Cutoff is calculated on CENTRE to CENTRE distance

Summary data uses Closest Approach clearance calculation for all minima
Hole size/Casings ARE included
Hole size/Casings are NOT subtracted from Centre-Centre distance
Confidence limit of 95.00% / 2.80 SD.

Wellbore

Name	Created	Last Revised
SRC LEFFLER #H-26CHZ (PWB)	28-Mar-2013	10-Apr-2013

Well

Name	Government ID	Last Revised
SRC LEFFLER #H-26CHZ		4-Apr-2013

Slot

Name	Grid Northing	Grid Easting	Latitude	Longitude	North	East
Slot #2	1445134.1250	3208163.6520	N40 33 10.3655	W104 45 3.1816	0.53N	22.49E

Installation

Name	Easting	Northing	Coord System Name	North Alignment
SRC LEFFLER	3208141.1650	1445133.5911	CO83-NF on NORTH AMERICAN DATUM 1983 datum	Grid

Field

Name	Easting	Northing	Coord System Name	North Alignment
Wattenberg	41136929.7567	12284170.6461	CO83-NF on NORTH AMERICAN DATUM 1983 datum	Grid

Clearance Summary

Offset WellName	Offset Wellbore	Offset Slot	Offset Structure	Separation [ft]	MD[ft]	Diverging From[ft]	Ellipse Separation [ft]	Ellipse MD[ft]	Clearance Factor	Clearance MD[ft]
SRC LEFFLER #H-26NHZ	SRC LEFFLER #H-26NHZ (PWB)	Slot #1	SRC LEFFLER	22.49	852.61	12072.47	20.49	852.61	2.93	12072.47
SRC LEFFLER #14-26NHZ	SRC LEFFLER #14-26NHZ (PWB)	Slot #3	SRC LEFFLER	22.50	970.00	12068.00	20.31	970.00	4.47	12056.68
SRC LEFFLER #B-26NAHZ	SRC LEFFLER #B-26NAHZ (PWB)	Slot #4	SRC LEFFLER	44.99	970.00	12056.68	42.80	970.00	9.20	12072.47
SRC LEFFLER #B-26CHZ	SRC LEFFLER #B-26CHZ (PWB)	Slot #5	SRC LEFFLER	67.49	970.00	12056.68	65.30	970.00	14.85	12072.47
SRC LEFFLER #B-26NBHZ	SRC LEFFLER #B-26NBHZ (PWB)	Slot #6	SRC LEFFLER	89.98	970.00	12056.68	87.79	970.00	17.05	12072.47
MAGNUSO N #23I-421	MAGNUSON #23I-421 (AWB)	MAGNUSO N #23I-421	SRC LEFFLER OFFSETS	103.63	5224.32	5224.32	79.81	5248.94	4.34	5298.15
SRC LEFFLER #24-26NHZ	SRC LEFFLER #24-26NHZ (PWB)	Slot #7	SRC LEFFLER	112.47	970.00	970.00	110.29	970.00	21.71	12072.47
SRC LEFFLER #P-26NHZ	SRC LEFFLER #P-26NHZ (PWB)	Slot #8	SRC LEFFLER	134.97	951.04	12056.68	132.81	951.04	25.85	12072.47
SRC LEFFLER P-26CHZ	SRC LEFFLER P-26CHZ (PWB)	Slot #9	SRC LEFFLER	157.46	852.61	12049.70	155.47	852.61	27.69	12072.47
MAGNUSO N #23I-221	MAGNUSON #23I-221 (AWB)	MAGNUSO N #23I-221	SRC LEFFLER OFFSETS	215.87	6727.15	6727.15	187.26	6727.15	7.51	6774.53
MAGNUSO N	MAGNUSON #23L-201	MAGNUSO N #23L-201	SRC LEFFLER	332.20	2927.98	2927.98	319.34	2952.35	23.17	3608.52

All data is in Feet unless otherwise stated
Coordinates are from Slot MD's are from Rig and TVD's are from Rig (Planned Datum #1 4916.0ft above Mean Sea Level)
Vertical Section is from 0.00N 0.00E on azimuth 187.790 degrees
Prepared by Peterson Energy
Date Printed: 11-Apr-2013



SYSDRILL
Closest Approach + Clearance Factor Summary Report
Wellbore: SRC LEFFLER #H-26CHZ (PWB)
Wellpath: SRC LEFFLER #H-26NHZ (PWP#1)

Clearance Summary

Offset WellName	Offset Wellbore	Offset Slot	Offset Structure	Separation [ft]	MD[ft]	Diverging From[ft]	Ellipse Separation [ft]	Ellipse MD[ft]	Clearance Factor	Clearance MD[ft]
#23L-201 MAGNUSO N	(AWB) MAGNUSON #23L-421	MAGNUSO N #23L-421	OFFSETS SRC LEFFLER	378.87	1377.55	1377.55	370.22	1393.95	35.93	1918.89
#23L-421 SRC LEFFLER #14-26D	(AWB) SRC LEFFLER #14-26D	SRC LEFFLER #14-26D	OFFSETS SRC LEFFLER OFFSETS	421.92	11878.95	11878.95	352.28	11876.24	6.04	11859.83
SRC LEFFLER #13-26D	(AWB) SRC LEFFLER #13-26D	SRC LEFFLER #13-26D	SRC LEFFLER OFFSETS	440.66	10604.64	10604.64	385.82	10604.64	8.03	10613.11
MAGNUSS ON #1-23	(AWB) MAGNUSSO N #1-23	MAGNUSS ON #1-23	SRC LEFFLER OFFSETS	661.69	5560.62	5560.62	633.58	5724.66	21.27	6954.98
SRC LEFFLER #24-26D	(AWB) SRC LEFFLER #24-26D	SRC LEFFLER #24-26D	SRC LEFFLER OFFSETS	1693.09	11856.13	11856.13	1622.83	11876.24	23.59	12072.47
SRC LEFFLER #23-26D	(AWB) SRC LEFFLER #23-26D	SRC LEFFLER #23-26D	SRC LEFFLER OFFSETS	1729.34	10583.63	10583.63	1673.08	10583.63	30.73	10580.30
TRACY #23M-203	(AWB) TRACY #23M-203	TRACY #23M-203	SRC LEFFLER OFFSETS	2411.92	6987.78	6987.78	2294.57	6987.78	20.55	7004.19
LEFFLER #26Q-421	(AWB) LEFFLER #26Q-421	LEFFLER #26Q-421	SRC LEFFLER OFFSETS	2978.83	11662.98	11662.98	2877.17	6922.17	23.38	7693.17
SRC LEFLER #23-26DX	(AWB) SRC LEFLER #23-26DX	SRC LEFLER #23-26DX	SRC LEFFLER OFFSETS	3681.09	524.53	11138.05	3678.34	491.72	370.15	12072.47
TRACY #31-23H	(AWB) TRACY #31-23H	TRACY #31-23H	SRC LEFFLER OFFSETS	3696.57	6889.36	6889.36	3573.11	6905.76	29.87	7016.00