

NOTES:

DISTANCES ARE MEASURED PERPENDICULAR TO NEAREST SECTION LINE AND ARE SHOWN ON THE SAME SIDE OF THE SECTION LINE WHERE THE WELL IS LOCATED.

THIS MAP DOES NOT REPRESENT A MONUMENTED BOUNDARY SURVEY.

LAND SURVEYOR'S CERTIFICATION

LAMP, RYNEARSON & ASSOCIATES, INC., OF FT. COLLINS, COLORADO HAS, IN ACCORDANCE WITH A REQUEST FROM COLLIN RICHARDSON, FOR MINERAL RESOURCES, INC., DETERMINED THE SURFACE LOCATION OF THE WELL DESIGNATED AS DT-HABITAT 4-5-6 TO BE 347' FROM THE NORTH LINE AND 1834' FROM THE EAST LINE OF SECTION 5, TOWNSHIP 5 NORTH, RANGE 65 WEST OF THE 6TH P.M., WELD COUNTY, COLORADO.

BASIS OF BEARING:

THE NORTH LINE OF THE NORTHEAST QUARTER OF SECTION 5-T5N-R65W BEARS S85°52'57"E BETWEEN THE NORTH QUARTER CORNER OF SECTION 5 MONUMENTED WITH 3 1/4" A.C. IN R.B. STAMPED "PLS 28259" AND THE NORTHEAST CORNER OF SECTION 5 MONUMENTED WITH A 2 1/2" A.C. IN R.B. STAMPED "LS 17500" BASED ON THE COLORADO NORTH 0501 STATE PLANE COORDINATE SYSTEM.

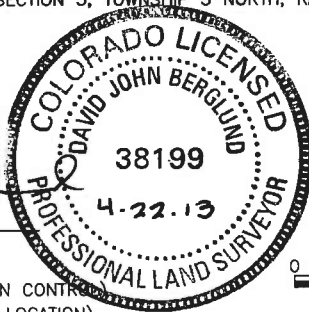
ELEVATIONS ARE BASED ON NAVD 88, AS OBSERVED FROM GPS OBSERVATIONS

LEGEND

- COMPUTED FROM GLO RECORDS
- ALIQUOT CORNER
- A.C. ALUMINUM CAP
- ⊕ BOTTOM HOLE
- R.B. RANGE BOX
- ⊙ PROPOSED WELL
- WELLBORE INFLECTION

DAVID JOHN BERGLUND
COLORADO PLS 38199

DATE OF SURVEY: 8/19/2010 (SECTION CONTROL)
DATE OF SURVEY: 11/12/2012 (WELL LOCATION)



0 500 1000 2000
1"=1000' US SURVEY FEET



**LAMP RYNEARSON
& ASSOCIATES**

4715 Innovation Drive 970.226.0342 | P
Fort Collins, CO 80525 970.226.0879 | F
www.LRA-Inc.com

Proposed Well Location Exhibit
DT-Habitat 4-5-6
1 of 2

drawn by
SSZ

date
4/22/13

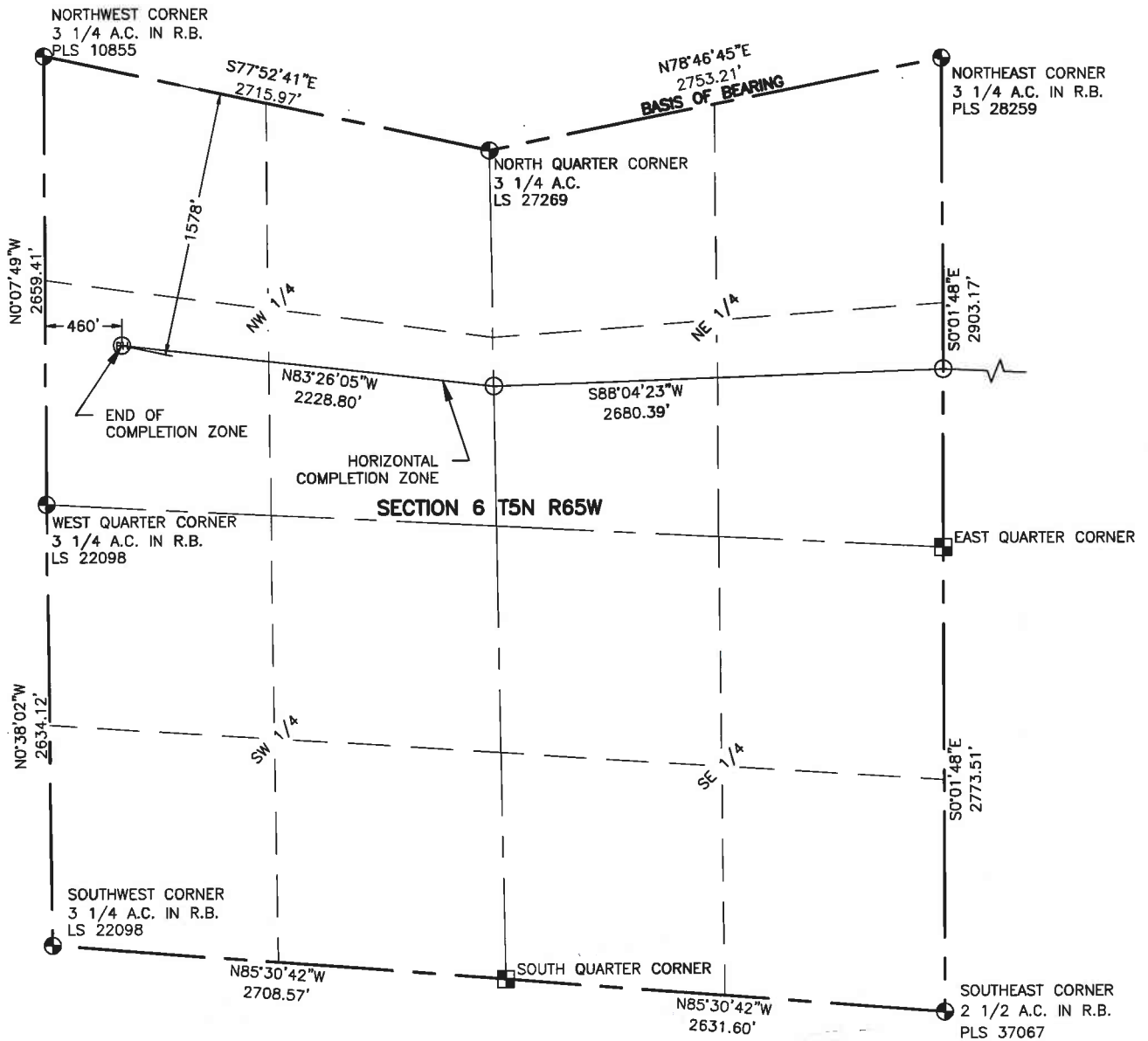
cogcc id

project - task number
0211012.02

book and page
MRI02, 1

surface - location
NW/4 NE/4 SEC 5 T5N R65W

path\filename P:\Engineering\0211012.02\DRAWINGS\EXHIBITS\0211012-02EXWPI.dwg



NOTES:

DISTANCES ARE MEASURED PERPENDICULAR TO NEAREST SECTION LINE AND ARE SHOWN ON THE SAME SIDE OF THE SECTION LINE WHERE THE WELL IS LOCATED.

THIS MAP DOES NOT REPRESENT A MONUMENTED BOUNDARY SURVEY.

BASIS OF BEARING:

THE NORTH LINE OF THE NORTHEAST QUARTER OF SECTION 6-T5N-R65W BEARS N78°46'45"E BETWEEN THE NORTH QUARTER CORNER OF SECTION 6 MONUMENTED WITH A 3 1/4" A.C. STAMPED "LS 27269" AND THE NORTHEAST CORNER OF SECTION 6 MONUMENTED WITH A 3 1/4" A.C. IN R.B. STAMPED "PLS 28259" BASED ON THE COLORADO NORTH 0501 STATE PLANE COORDINATE SYSTEM.

ELEVATIONS ARE BASED ON NAVD 88, AS OBSERVED FROM GPS OBSERVATIONS

LEGEND

- ALIQUOT CORNER
- ⊙ BOTTOM HOLE
- COMPUTED FROM GLO RECORDS
- A.C. ALUMINUM CAP
- R.B. RANGE BOX

0 500 1000 2000
1"=1000' US SURVEY FEET



**LAMP RYNEARSON
& ASSOCIATES**

4715 Innovation Drive 970.226.0342 | P
Fort Collins, CO 80525 970.226.0879 | F
www.LRA-Inc.com

Proposed Well Location Exhibit
DT-Habitat 4-5-6
2 of 2

drawn by
SSZ

date
4/22/13

cogcc id

project - task number
0211012.02

book and page
MRI02, 1

surface - location
NW/4 NE/4 SEC 5 T5N R65W

path\filename P:\Engineering\0211012.02\DRAWINGS\EXHIBITS\0211012-02EXWP1A.dwg