

WELL LOCATION DATA:

LATITUDE: 40.43562°N
 LONGITUDE: 104.68427°W
 ELEVATION: 4643'
 PDOP: 0.7
 OPERATOR: C. HOLMES
 SURFACE USE: INDUSTRIAL
 PROPOSED GROUND ELEVATION: 4641.7'

NOTES:

DISTANCES ARE MEASURED PERPENDICULAR TO NEAREST SECTION LINE AND ARE SHOWN ON THE SAME SIDE OF THE SECTION LINE WHERE THE WELL IS LOCATED.

THIS MAP DOES NOT REPRESENT A MONUMENTED BOUNDARY SURVEY.

LAND SURVEYOR'S CERTIFICATION

LAMP, RYNEARSON & ASSOCIATES, INC., OF FT. COLLINS, COLORADO HAS, IN ACCORDANCE WITH A REQUEST FROM COLLIN RICHARDSON FOR MINERAL RESOURCES, INC., DETERMINED THE SURFACE LOCATION OF THE WELL DESIGNATED AS DT-HABITAT 3-5-6 TO BE 331' FROM THE NORTH LINE AND 1835' FROM THE EAST LINE OF SECTION 5, TOWNSHIP 5 NORTH, RANGE 65 WEST OF THE 6TH P.M., WELD COUNTY, COLORADO.

BASIS OF BEARING:

THE NORTH LINE OF THE NORTHEAST QUARTER OF SECTION 5-T5N-R65W BEARS S85°52'57"E BETWEEN THE NORTH QUARTER CORNER OF SECTION 5 MONUMENTED WITH 3 1/4" A.C. IN R.B. STAMPED "PLS 28259" AND THE NORTHEAST CORNER OF SECTION 5 MONUMENTED WITH A 2 1/2" A.C. IN R.B. STAMPED "LS 17500" BASED ON THE COLORADO NORTH 0501 STATE PLANE COORDINATE SYSTEM.

ELEVATIONS ARE BASED ON NAVD 88, AS OBSERVED FROM GPS OBSERVATIONS

LEGEND

- COMPUTED FROM GLO RECORDS
- ALIQUOT CORNER
- A.C. ALUMINUM CAP
- BOTTOM HOLE
- R.B. RANGE BOX
- PROPOSED WELL
- WELLBORE INFLECTION

DAVID JOHN BERGLUND
 COLORADO PLS 38199

DATE OF SURVEY: 8/19/2010 (SECTION CONTROL)
 DATE OF SURVEY: 11/12/2012 (WELL LOCATION)



500 1000 2000
 1"=1000' US SURVEY FEET

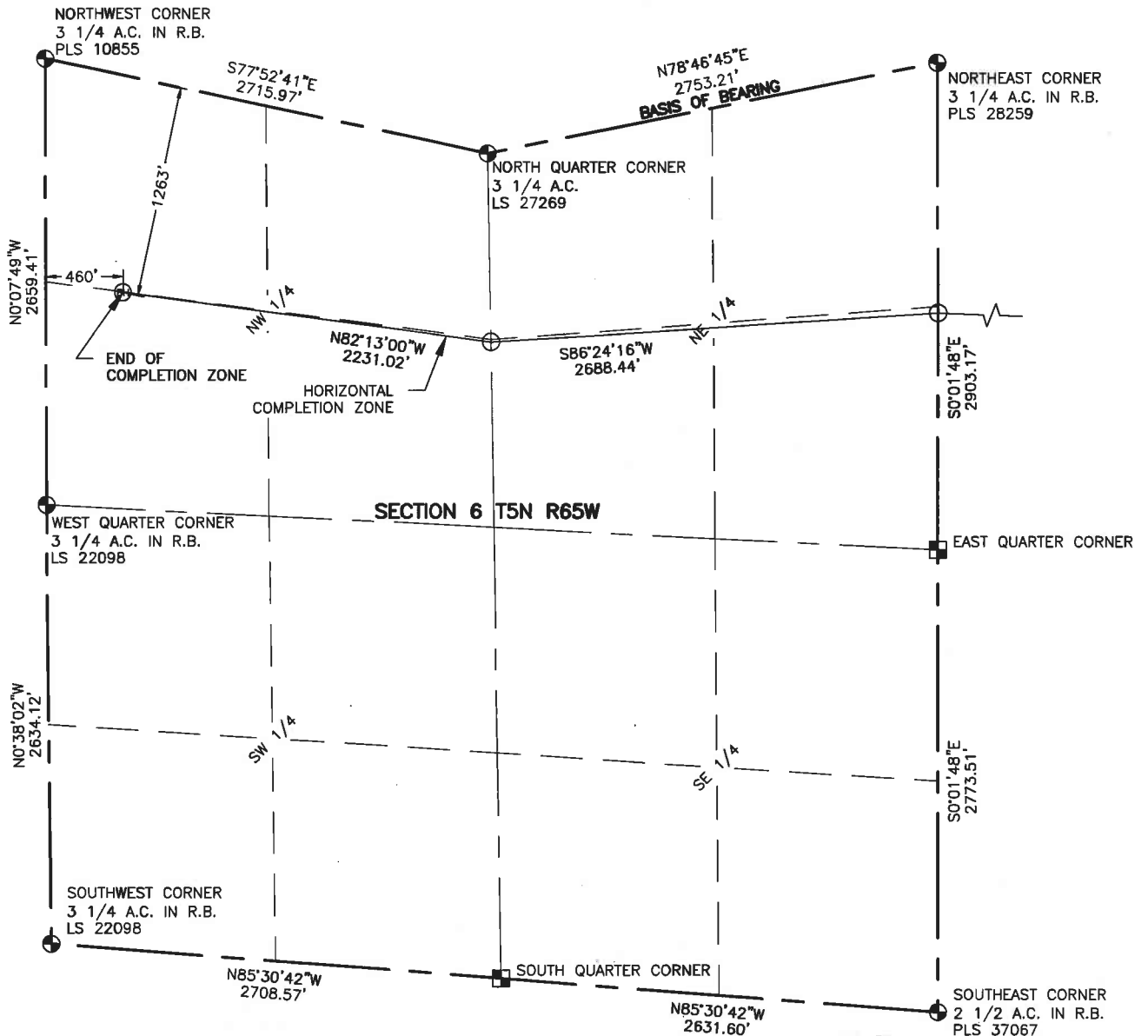


**LAMP RYNEARSON
 & ASSOCIATES**

4715 Innovation Drive 970.226.0342 | P
 Fort Collins, CO 80525 970.226.0879 | F
 www.LRA-Inc.com

Proposed Well Location Exhibit
 DT-Habitat 3-5-6
 1 of 2

drawn by	date	cogcc id	project - task number	book and page	surface - location
SSZ	4/22/13		0211012.02	MRI02, 1	NW/4 NE/4 SEC 5 T5N R65W
path\filename P:_Engineering\0211012.02\DRAWINGS\EXHIBITS\0211012-02EXWPH.dwg					



NOTES:

DISTANCES ARE MEASURED PERPENDICULAR TO NEAREST SECTION LINE AND ARE SHOWN ON THE SAME SIDE OF THE SECTION LINE WHERE THE WELL IS LOCATED.

THIS MAP DOES NOT REPRESENT A MONUMENTED BOUNDARY SURVEY.

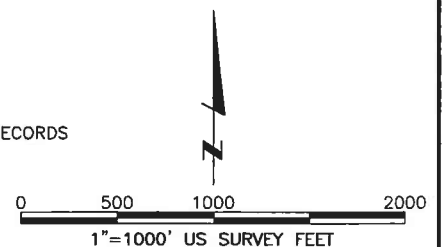
BASIS OF BEARING:

THE NORTH LINE OF THE NORTHEAST QUARTER OF SECTION 6-T5N-R65W BEARS N78°46'45"E BETWEEN THE NORTH QUARTER CORNER OF SECTION 6 MONUMENTED WITH A 3 1/4" A.C. STAMPED "LS 27269" AND THE NORTHEAST CORNER OF SECTION 6 MONUMENTED WITH A 3 1/4" A.C. IN R.B. STAMPED "PLS 28259" BASED ON THE COLORADO NORTH 0501 STATE PLANE COORDINATE SYSTEM.

ELEVATIONS ARE BASED ON NAVD 88, AS OBSERVED FROM GPS OBSERVATIONS

LEGEND

- ALIQUOT CORNER
- ⊕ BOTTOM HOLE
- COMPUTED FROM GLO RECORDS
- A.C. ALUMINUM CAP
- R.B. RANGE BOX



4715 Innovation Drive 970.226.0342 | P
Fort Collins, CO 80525 970.226.0879 | F
www.LRA-Inc.com

Proposed Well Location Exhibit
DT-Habitat 3-5-6
2 of 2

drawn by SSZ	date 4/22/13	cogcc id	project - task number 0211012.02	book and page MRI02, 1	surface - location NW/4 NE/4 SEC 5 T5N R65W
path\filename P:_Engineering\0211012.02\DRAWINGS\EXHIBITS\0211012-02EXWPHA.dwg					