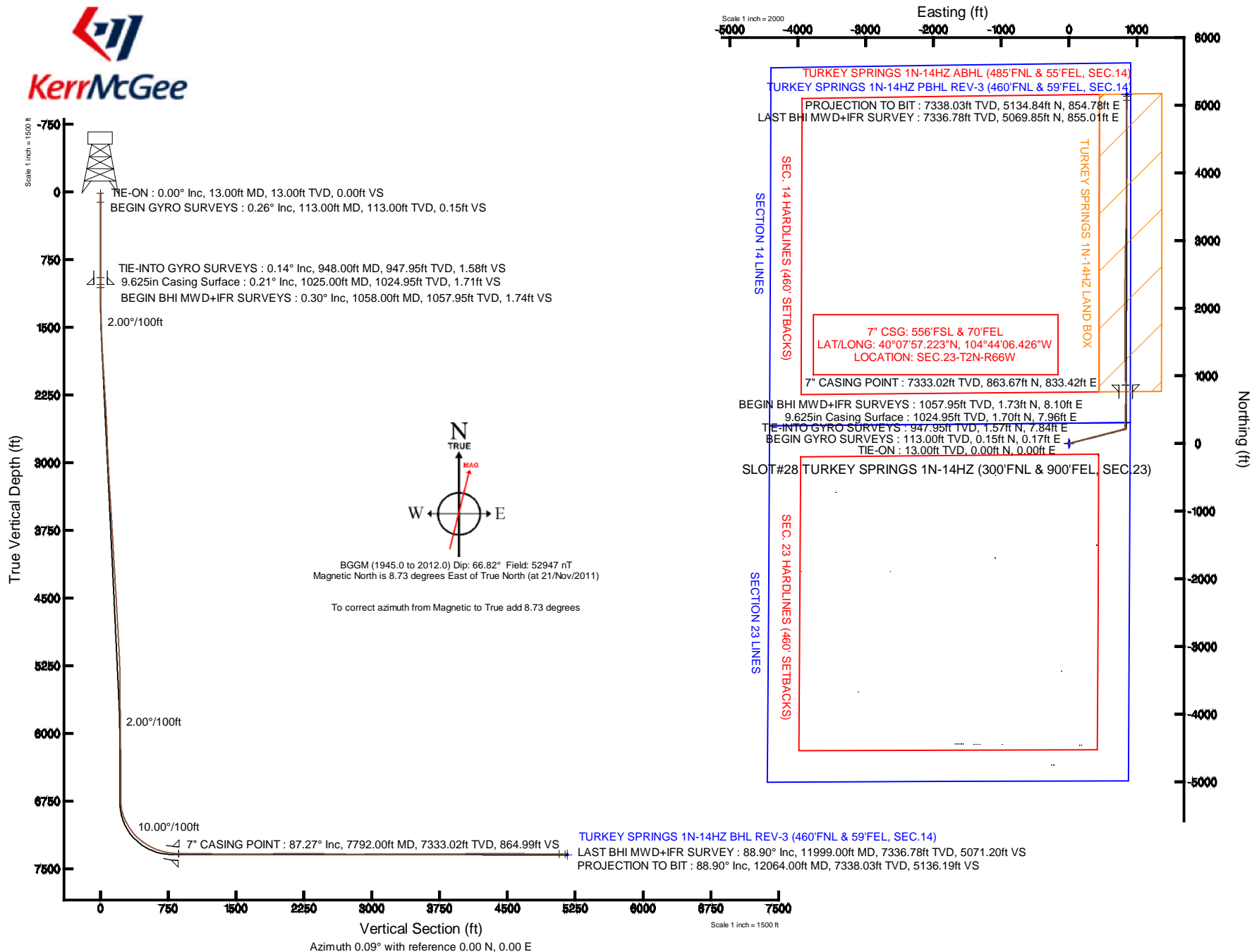


|           |                          |           |  |
|-----------|--------------------------|-----------|--|
| Location: | COLORADO                 | Slot:     | SLOT#28 TURKEY SPRINGS 1N-14HZ (300'FNL & 900'FEL, SEC.23) |
| Field:    | WELD COUNTY (KERR MCGEE) | Well:     | TURKEY SPRINGS 1N-14HZ                                     |
| Facility: | SEC.23-T2N-R66W          | Wellbore: | TURKEY SPRINGS 1N-14HZ PWB                                 |

|  |  |
|--|--|
| Plot reference wellpath is TURKEY SPRINGS 1N-14HZ (REV-B.0) PWP  |  |
| True vertical depths are referenced to ENSGIN 138 (RKB)  | Grid System: NAD83 / Lambert Colorado SP. Northern Zone (501), US feet |
| Measured depths are referenced to ENSGIN 138 (RKB)   | North Reference: True north  |
| ENSGIN 138 (RKB) to Mean Sea Level: 5115 feet  | Scale: True distance   |
| Mean Sea Level to Mud line (At Slot: SLOT#28 TURKEY SPRINGS 1N-14HZ (300FNL & 900FEL, SEC.23)): 0 feet | Depths are in feet   |
| Coordinates are in feet referenced to Slot   | Created by: rcdiale01 on 17/Jun/2013                                   |





# Actual Wellpath Report

TURKEY SPRINGS 1N-14HZ AWP

Page 1 of 6



## REFERENCE WELLPATH IDENTIFICATION

|          |                                 |          |  |
|----------|---------------------------------|----------|--|
| Operator | KERR-MCGEE OIL & GAS ONSHORE LP | Slot     | SLOT#28 TURKEY SPRINGS 1N-14HZ (300'FNL & 900'FEL, SEC.23) |
| Area     | COLORADO                        | Well     | TURKEY SPRINGS 1N-14HZ                                     |
| Field    | WELD COUNTY (KERR MCGEE)        | Wellbore | TURKEY SPRINGS 1N-14HZ AWB                                 |
| Facility | SEC.23-T2N-R66W                 |          |  |

## REPORT SETUP INFORMATION

|                     |   |                      |  |
|---------------------|---|----------------------|--|
| Projection System   | NAD83 / Lambert Colorado SP, Northern Zone (501), US feet | Software System      | WellArchitect® 4.0.0                       |
| North Reference     | True  | User                 | Robiale01                                  |
| Scale               | 0.999959  | Report Generated     | 17/Jun/2013 at 10:24                       |
| Convergence at slot | n/a   | Database/Source file | WA_ANADARKO/TURKEY_SPRINGS_1N-14HZ_AWB.xml |

## WELLPATH LOCATION

|                       | Local coordinates |          | Grid coordinates |                 | Geographic coordinates |                 |
|-----------------------|-------------------|----------|------------------|-----------------|------------------------|-----------------|
|                       | North[ft]         | East[ft] | Easting[US ft]   | Northing[US ft] | Latitude               | Longitude       |
| Slot Location         | 4750.71           | 225.72   | 3213039.23       | 1291187.62      | 40°07'48.688"N         | 104°44'17.156"W |
| Facility Reference Pt |                   |          | 3212854.29       | 1286435.36      | 40°07'01.741"N         | 104°44'20.062"W |
| Field Reference Pt    |                   |          | 3197771.84       | 1268891.29      | 40°04'09.600"N         | 104°47'36.000"W |

## WELLPATH DATUM

|                          |                   |   |                   |
|--------------------------|-------------------|---|-------------------|
| Calculation method       | Minimum curvature | ENSGIN 138 (RKB) to Facility Vertical Datum   | 5115.00ft         |
| Horizontal Reference Pt  | Slot              | ENSGIN 138 (RKB) to Mean Sea Level  | 5115.00ft         |
| Vertical Reference Pt    | ENSGIN 138 (RKB)  | ENSGIN 138 (RKB) to Mud Line at Slot (SLOT#28 TURKEY SPRINGS 1N-14HZ (300'FNL & 900'FEL, SEC.23)) | 5115.00ft         |
| MD Reference Pt          | ENSGIN 138 (RKB)  | Section Origin  | N 0.00, E 0.00 ft |
| Field Vertical Reference | Mean Sea Level    | Section Azimuth   | 9.45°             |



# Actual Wellpath Report

TURKEY SPRINGS 1N-14HZ AWP

Page 2 of 6



| REFERENCE WELLPATH IDENTIFICATION |                                 |          |  |
|-----------------------------------|---------------------------------|----------|--|
| Operator                          | KERR-MCGEE OIL & GAS ONSHORE LP | Slot     | SLOT#28 TURKEY SPRINGS 1N-14HZ (300'FNL & 900'FEL, SEC.23) |
| Area                              | COLORADO                        | Well     | TURKEY SPRINGS 1N-14HZ                                     |
| Field                             | WELD COUNTY (KERR MCGEE)        | Wellbore | TURKEY SPRINGS 1N-14HZ AWP                                 |
| Facility                          | SEC.23-T2N-R66W                 |          |  |

## WELLPATH DATA (120 stations) † = interpolated/extrapolated station

| MD<br>[ft] | Inclination<br>[°] | Azimuth<br>[°] | TVD<br>[ft] | Vert Sect<br>[ft] | North<br>[ft] | East<br>[ft] | Latitude       | Longitude       | DLS<br>[°/100ft] | Comments                  |
|------------|--------------------|----------------|-------------|-------------------|---------------|--------------|----------------|-----------------|------------------|---------------------------|
| 0.00†      | 0.000              | 48.790         | 0.00        | 0.00              | 0.00          | 0.00         | 40°07'48.688"N | 104°44'17.156"W | 0.00             |                           |
| 13.00      | 0.000              | 48.790         | 13.00       | 0.00              | 0.00          | 0.00         | 40°07'48.688"N | 104°44'17.156"W | 0.00             | TIE-ON                    |
| 113.00     | 0.260              | 48.790         | 113.00      | 0.18              | 0.15          | 0.17         | 40°07'48.689"N | 104°44'17.154"W | 0.26             | BEGIN GYRO SURVEYS        |
| 213.00     | 0.420              | 41.560         | 213.00      | 0.66              | 0.57          | 0.58         | 40°07'48.694"N | 104°44'17.148"W | 0.17             |                           |
| 313.00     | 0.620              | 48.570         | 312.99      | 1.39              | 1.21          | 1.23         | 40°07'48.700"N | 104°44'17.140"W | 0.21             |                           |
| 413.00     | 0.660              | 83.280         | 412.99      | 1.97              | 1.63          | 2.21         | 40°07'48.704"N | 104°44'17.128"W | 0.38             |                           |
| 513.00     | 0.860              | 95.490         | 512.98      | 2.18              | 1.63          | 3.53         | 40°07'48.704"N | 104°44'17.111"W | 0.26             |                           |
| 613.00     | 0.710              | 81.090         | 612.97      | 2.43              | 1.65          | 4.89         | 40°07'48.704"N | 104°44'17.093"W | 0.25             |                           |
| 713.00     | 0.640              | 84.360         | 712.96      | 2.77              | 1.80          | 6.06         | 40°07'48.706"N | 104°44'17.078"W | 0.08             |                           |
| 813.00     | 0.520              | 86.820         | 812.96      | 3.02              | 1.88          | 7.07         | 40°07'48.707"N | 104°44'17.065"W | 0.12             |                           |
| 913.00     | 0.430              | 138.610        | 912.95      | 2.88              | 1.63          | 7.77         | 40°07'48.704"N | 104°44'17.056"W | 0.42             |                           |
| 948.00     | 0.140              | 347.780        | 947.95      | 2.84              | 1.57          | 7.84         | 40°07'48.703"N | 104°44'17.055"W | 1.59             | TIE-INTO GYRO SURVEYS     |
| 1058.00    | 0.300              | 84.200         | 1057.95     | 3.04              | 1.73          | 8.10         | 40°07'48.705"N | 104°44'17.052"W | 0.31             | BEGIN BHI MWD+IFR SURVEYS |
| 1149.00    | 1.800              | 74.700         | 1148.94     | 3.70              | 2.13          | 9.72         | 40°07'48.709"N | 104°44'17.031"W | 1.65             |                           |
| 1240.00    | 4.300              | 76.400         | 1239.80     | 5.63              | 3.31          | 14.41        | 40°07'48.721"N | 104°44'16.970"W | 2.75             |                           |
| 1331.00    | 5.400              | 75.500         | 1330.47     | 8.71              | 5.18          | 21.88        | 40°07'48.739"N | 104°44'16.874"W | 1.21             |                           |
| 1423.00    | 7.300              | 75.600         | 1421.90     | 12.83             | 7.72          | 31.73        | 40°07'48.764"N | 104°44'16.748"W | 2.07             |                           |
| 1514.00    | 8.900              | 78.300         | 1511.99     | 17.71             | 10.59         | 44.22        | 40°07'48.793"N | 104°44'16.587"W | 1.81             |                           |
| 1606.00    | 10.800             | 77.600         | 1602.63     | 23.48             | 13.88         | 59.61        | 40°07'48.825"N | 104°44'16.389"W | 2.07             |                           |
| 1697.00    | 12.100             | 76.500         | 1691.82     | 30.37             | 17.94         | 77.21        | 40°07'48.865"N | 104°44'16.162"W | 1.45             |                           |
| 1787.00    | 12.800             | 75.400         | 1779.70     | 38.12             | 22.65         | 96.03        | 40°07'48.912"N | 104°44'15.920"W | 0.82             |                           |
| 1877.00    | 12.800             | 74.600         | 1867.47     | 46.37             | 27.81         | 115.29       | 40°07'48.963"N | 104°44'15.672"W | 0.20             |                           |
| 1972.00    | 12.400             | 73.400         | 1960.18     | 55.27             | 33.52         | 135.21       | 40°07'49.019"N | 104°44'15.415"W | 0.50             |                           |
| 2067.00    | 12.300             | 74.800         | 2052.98     | 63.97             | 39.09         | 154.75       | 40°07'49.074"N | 104°44'15.164"W | 0.33             |                           |
| 2161.00    | 12.500             | 75.700         | 2144.79     | 72.24             | 44.23         | 174.27       | 40°07'49.125"N | 104°44'14.912"W | 0.30             |                           |
| 2256.00    | 12.700             | 73.900         | 2237.50     | 80.89             | 49.66         | 194.27       | 40°07'49.179"N | 104°44'14.655"W | 0.46             |                           |
| 2351.00    | 11.800             | 73.700         | 2330.34     | 89.61             | 55.29         | 213.63       | 40°07'49.234"N | 104°44'14.406"W | 0.95             |                           |
| 2446.00    | 12.100             | 74.200         | 2423.28     | 98.08             | 60.72         | 232.53       | 40°07'49.288"N | 104°44'14.162"W | 0.33             |                           |
| 2541.00    | 11.400             | 75.500         | 2516.29     | 106.14            | 65.79         | 251.20       | 40°07'49.338"N | 104°44'13.922"W | 0.79             |                           |
| 2636.00    | 11.500             | 76.800         | 2609.40     | 113.60            | 70.30         | 269.51       | 40°07'49.383"N | 104°44'13.686"W | 0.29             |                           |
| 2730.00    | 11.300             | 82.900         | 2701.55     | 119.83            | 73.58         | 287.77       | 40°07'49.415"N | 104°44'13.451"W | 1.30             |                           |
| 2825.00    | 11.700             | 79.200         | 2794.64     | 125.82            | 76.53         | 306.47       | 40°07'49.444"N | 104°44'13.210"W | 0.88             |                           |
| 2919.00    | 11.200             | 77.600         | 2886.77     | 132.51            | 80.28         | 324.75       | 40°07'49.481"N | 104°44'12.975"W | 0.63             |                           |
| 3014.00    | 11.700             | 75.400         | 2979.88     | 139.87            | 84.69         | 343.08       | 40°07'49.525"N | 104°44'12.739"W | 0.70             |                           |
| 3109.00    | 11.700             | 76.700         | 3072.90     | 147.53            | 89.33         | 361.78       | 40°07'49.571"N | 104°44'12.498"W | 0.28             |                           |
| 3203.00    | 12.400             | 75.000         | 3164.83     | 155.39            | 94.14         | 380.80       | 40°07'49.618"N | 104°44'12.254"W | 0.83             |                           |
| 3297.00    | 12.200             | 74.200         | 3256.67     | 163.80            | 99.45         | 400.11       | 40°07'49.671"N | 104°44'12.005"W | 0.28             |                           |
| 3393.00    | 12.000             | 73.300         | 3350.54     | 172.53            | 105.08        | 419.43       | 40°07'49.726"N | 104°44'11.756"W | 0.29             |                           |
| 3488.00    | 11.700             | 71.400         | 3443.52     | 181.41            | 110.99        | 438.01       | 40°07'49.785"N | 104°44'11.517"W | 0.52             |                           |
| 3583.00    | 11.800             | 72.100         | 3536.53     | 190.40            | 117.05        | 456.39       | 40°07'49.845"N | 104°44'11.280"W | 0.18             |                           |
| 3678.00    | 11.600             | 73.300         | 3629.55     | 199.08            | 122.78        | 474.78       | 40°07'49.901"N | 104°44'11.044"W | 0.33             |                           |
| 3772.00    | 11.600             | 73.900         | 3721.63     | 207.32            | 128.12        | 492.91       | 40°07'49.954"N | 104°44'10.810"W | 0.13             |                           |
| 3867.00    | 11.800             | 74.400         | 3814.66     | 215.55            | 133.38        | 511.44       | 40°07'50.006"N | 104°44'10.572"W | 0.24             |                           |
| 3962.00    | 12.300             | 75.000         | 3907.57     | 223.85            | 138.61        | 530.57       | 40°07'50.058"N | 104°44'10.325"W | 0.54             |                           |
| 4056.00    | 11.900             | 75.100         | 3999.48     | 231.99            | 143.69        | 549.61       | 40°07'50.108"N | 104°44'10.080"W | 0.43             |                           |



# Actual Wellpath Report

TURKEY SPRINGS 1N-14HZ AWP

Page 3 of 6



| REFERENCE WELLPATH IDENTIFICATION |                                 |          |  |
|-----------------------------------|---------------------------------|----------|--|
| Operator                          | KERR-MCGEE OIL & GAS ONSHORE LP | Slot     | SLOT#28 TURKEY SPRINGS 1N-14HZ (300'FNL & 900'FEL, SEC.23) |
| Area                              | COLORADO                        | Well     | TURKEY SPRINGS 1N-14HZ                                     |
| Field                             | WELD COUNTY (KERR MCGEE)        | Wellbore | TURKEY SPRINGS 1N-14HZ AWB                                 |
| Facility                          | SEC.23-T2N-R66W                 |          |  |

## WELLPATH DATA (120 stations) † = interpolated/extrapolated station

| MD<br>[ft] | Inclination<br>[°] | Azimuth<br>[°] | TVD<br>[ft] | Vert Sect<br>[ft] | North<br>[ft] | East<br>[ft] | Latitude       | Longitude       | DLS<br>[°/100ft] | Comments        |
|------------|--------------------|----------------|-------------|-------------------|---------------|--------------|----------------|-----------------|------------------|-----------------|
| 4150.00    | 11.900             | 72.900         | 4091.46     | 240.32            | 149.03        | 568.24       | 40°07'50.161"N | 104°44'09.840"W | 0.48             |                 |
| 4245.00    | 12.300             | 75.500         | 4184.35     | 248.81            | 154.45        | 587.40       | 40°07'50.214"N | 104°44'09.594"W | 0.71             |                 |
| 4342.00    | 12.800             | 76.200         | 4279.03     | 257.24            | 159.60        | 607.84       | 40°07'50.265"N | 104°44'09.331"W | 0.54             |                 |
| 4436.00    | 14.100             | 75.900         | 4370.45     | 265.93            | 164.87        | 629.05       | 40°07'50.317"N | 104°44'09.057"W | 1.38             |                 |
| 4531.00    | 13.200             | 74.700         | 4462.77     | 275.09            | 170.55        | 650.74       | 40°07'50.373"N | 104°44'08.778"W | 0.99             |                 |
| 4626.00    | 13.000             | 75.800         | 4555.29     | 283.92            | 176.04        | 671.56       | 40°07'50.428"N | 104°44'08.510"W | 0.34             |                 |
| 4721.00    | 13.600             | 76.500         | 4647.75     | 292.56            | 181.27        | 692.78       | 40°07'50.479"N | 104°44'08.237"W | 0.65             |                 |
| 4816.00    | 13.800             | 77.400         | 4740.04     | 301.17            | 186.34        | 714.70       | 40°07'50.529"N | 104°44'07.955"W | 0.31             |                 |
| 4911.00    | 13.100             | 75.000         | 4832.44     | 309.88            | 191.60        | 736.15       | 40°07'50.581"N | 104°44'07.679"W | 0.94             |                 |
| 5006.00    | 11.500             | 72.900         | 4925.25     | 318.57            | 197.17        | 755.61       | 40°07'50.636"N | 104°44'07.428"W | 1.75             |                 |
| 5100.00    | 9.000              | 74.600         | 5017.75     | 325.85            | 201.88        | 771.65       | 40°07'50.683"N | 104°44'07.222"W | 2.68             |                 |
| 5197.00    | 8.400              | 71.400         | 5113.63     | 332.37            | 206.16        | 785.68       | 40°07'50.725"N | 104°44'07.041"W | 0.79             |                 |
| 5291.00    | 7.400              | 69.300         | 5206.74     | 338.64            | 210.49        | 797.85       | 40°07'50.768"N | 104°44'06.884"W | 1.11             |                 |
| 5386.00    | 6.500              | 73.000         | 5301.04     | 344.11            | 214.22        | 808.72       | 40°07'50.805"N | 104°44'06.744"W | 1.06             |                 |
| 5479.00    | 5.500              | 83.300         | 5393.53     | 347.70            | 216.28        | 818.18       | 40°07'50.825"N | 104°44'06.623"W | 1.58             |                 |
| 5574.00    | 4.400              | 94.200         | 5488.18     | 349.30            | 216.54        | 826.34       | 40°07'50.828"N | 104°44'06.518"W | 1.52             |                 |
| 5668.00    | 2.600              | 83.000         | 5582.00     | 350.23            | 216.54        | 832.05       | 40°07'50.828"N | 104°44'06.444"W | 2.04             |                 |
| 5763.00    | 2.300              | 79.000         | 5676.91     | 351.51            | 217.17        | 836.06       | 40°07'50.834"N | 104°44'06.392"W | 0.36             |                 |
| 5858.00    | 0.500              | 45.800         | 5771.88     | 352.51            | 217.82        | 838.23       | 40°07'50.840"N | 104°44'06.364"W | 2.00             |                 |
| 6244.00    | 1.100              | 329.800        | 6157.85     | 356.72            | 222.20        | 837.57       | 40°07'50.884"N | 104°44'06.373"W | 0.28             |                 |
| 6338.00    | 1.300              | 314.700        | 6251.83     | 358.03            | 223.73        | 836.36       | 40°07'50.899"N | 104°44'06.389"W | 0.40             |                 |
| 6433.00    | 0.100              | 292.800        | 6346.82     | 358.67            | 224.52        | 835.52       | 40°07'50.907"N | 104°44'06.399"W | 1.27             |                 |
| 6790.00    | 1.300              | 272.700        | 6703.79     | 358.26            | 224.83        | 831.18       | 40°07'50.910"N | 104°44'06.455"W | 0.34             |                 |
| 6854.00    | 2.600              | 306.500        | 6767.75     | 358.84            | 225.73        | 829.29       | 40°07'50.919"N | 104°44'06.479"W | 2.63             |                 |
| 6901.00    | 7.100              | 344.700        | 6814.58     | 361.96            | 229.16        | 827.67       | 40°07'50.952"N | 104°44'06.500"W | 11.29            |                 |
| 6948.00    | 13.300             | 348.200        | 6860.82     | 369.65            | 237.27        | 825.79       | 40°07'51.033"N | 104°44'06.525"W | 13.25            |                 |
| 6995.00    | 19.000             | 353.800        | 6905.94     | 382.06            | 250.17        | 823.86       | 40°07'51.160"N | 104°44'06.549"W | 12.56            |                 |
| 7042.00    | 24.500             | 358.300        | 6949.58     | 399.01            | 267.54        | 822.74       | 40°07'51.332"N | 104°44'06.564"W | 12.22            |                 |
| 7090.00    | 28.400             | 2.400          | 6992.56     | 420.11            | 288.90        | 822.93       | 40°07'51.543"N | 104°44'06.561"W | 8.97             |                 |
| 7137.00    | 31.700             | 5.800          | 7033.24     | 443.53            | 312.36        | 824.64       | 40°07'51.775"N | 104°44'06.539"W | 7.90             |                 |
| 7185.00    | 35.800             | 6.100          | 7073.14     | 470.15            | 338.88        | 827.41       | 40°07'52.037"N | 104°44'06.504"W | 8.55             |                 |
| 7232.00    | 40.200             | 4.800          | 7110.17     | 499.00            | 367.68        | 830.14       | 40°07'52.321"N | 104°44'06.468"W | 9.51             |                 |
| 7279.00    | 44.900             | 0.900          | 7144.79     | 530.55            | 399.40        | 831.67       | 40°07'52.635"N | 104°44'06.449"W | 11.46            |                 |
| 7326.00    | 49.800             | 358.800        | 7176.62     | 564.61            | 433.96        | 831.56       | 40°07'52.976"N | 104°44'06.450"W | 10.93            |                 |
| 7375.00    | 54.600             | 359.500        | 7206.65     | 602.70            | 472.66        | 830.99       | 40°07'53.359"N | 104°44'06.458"W | 9.86             |                 |
| 7422.00    | 58.700             | 0.400          | 7232.48     | 641.41            | 511.91        | 830.96       | 40°07'53.747"N | 104°44'06.458"W | 8.87             |                 |
| 7470.00    | 62.900             | 0.900          | 7255.89     | 682.81            | 553.80        | 831.44       | 40°07'54.161"N | 104°44'06.452"W | 8.80             |                 |
| 7517.00    | 66.400             | 0.900          | 7276.01     | 724.80            | 596.26        | 832.11       | 40°07'54.580"N | 104°44'06.443"W | 7.45             |                 |
| 7565.00    | 70.700             | 2.000          | 7293.56     | 769.03            | 640.91        | 833.25       | 40°07'55.021"N | 104°44'06.428"W | 9.21             |                 |
| 7612.00    | 75.200             | 1.200          | 7307.34     | 813.53            | 685.81        | 834.50       | 40°07'55.465"N | 104°44'06.412"W | 9.71             |                 |
| 7661.00    | 79.700             | 0.100          | 7317.98     | 860.79            | 733.63        | 835.04       | 40°07'55.938"N | 104°44'06.405"W | 9.44             |                 |
| 7708.00    | 82.800             | 359.200        | 7325.13     | 906.56            | 780.07        | 834.75       | 40°07'56.397"N | 104°44'06.409"W | 6.86             |                 |
| 7754.00    | 84.400             | 359.200        | 7330.26     | 951.54            | 825.78        | 834.11       | 40°07'56.848"N | 104°44'06.417"W | 3.48             |                 |
| 7792.00†   | 87.274             | 358.712        | 7333.02     | 988.80            | 863.67        | 833.42       | 40°07'57.223"N | 104°44'06.426"W | 7.67             | 7" CASING POINT |
| 7832.00    | 90.300             | 358.200        | 7333.86     | 1028.05           | 903.64        | 832.34       | 40°07'57.618"N | 104°44'06.440"W | 7.67             |                 |



# Actual Wellpath Report

TURKEY SPRINGS 1N-14HZ AWP

Page 4 of 6



## REFERENCE WELLPATH IDENTIFICATION

|          |                                 |          |  |
|----------|---------------------------------|----------|--|
| Operator | KERR-MCGEE OIL & GAS ONSHORE LP | Slot     | SLOT#28 TURKEY SPRINGS 1N-14HZ (300'FNL & 900'FEL, SEC.23) |
| Area     | COLORADO                        | Well     | TURKEY SPRINGS 1N-14HZ                                     |
| Field    | WELD COUNTY (KERR MCGEE)        | Wellbore | TURKEY SPRINGS 1N-14HZ AWB                                 |
| Facility | SEC.23-T2N-R66W                 |          |  |

## WELLPATH DATA (120 stations)

| MD [ft]  | Inclination [°] | Azimuth [°] | TVD [ft] | Vert Sect [ft] | North [ft] | East [ft] | Latitude       | Longitude       | DLS [°/100ft] | Comments                |
|----------|-----------------|-------------|----------|----------------|------------|-----------|----------------|-----------------|---------------|-------------------------|
| 7896.00  | 90.800          | 357.900     | 7333.25  | 1090.79        | 967.60     | 830.17    | 40°07'58.250"N | 104°44'06.468"W | 0.91          |                         |
| 7990.00  | 90.600          | 359.300     | 7332.10  | 1183.10        | 1061.56    | 827.87    | 40°07'59.178"N | 104°44'06.497"W | 1.50          |                         |
| 8085.00  | 88.800          | 358.900     | 7332.60  | 1276.54        | 1156.55    | 826.38    | 40°08'00.117"N | 104°44'06.517"W | 1.94          |                         |
| 8179.00  | 88.600          | 359.000     | 7334.73  | 1368.95        | 1250.51    | 824.66    | 40°08'01.045"N | 104°44'06.539"W | 0.24          |                         |
| 8275.00  | 89.800          | 359.800     | 7336.07  | 1463.46        | 1346.49    | 823.65    | 40°08'01.994"N | 104°44'06.552"W | 1.50          |                         |
| 8464.00  | 89.300          | 359.500     | 7337.56  | 1649.70        | 1535.48    | 822.50    | 40°08'03.862"N | 104°44'06.566"W | 0.31          |                         |
| 8559.00  | 90.000          | 359.400     | 7338.14  | 1743.25        | 1630.47    | 821.58    | 40°08'04.800"N | 104°44'06.578"W | 0.74          |                         |
| 8748.00  | 91.400          | 0.200       | 7335.83  | 1929.55        | 1819.45    | 820.92    | 40°08'06.668"N | 104°44'06.587"W | 0.85          |                         |
| 8843.00  | 90.800          | 0.200       | 7334.00  | 2023.30        | 1914.43    | 821.26    | 40°08'07.606"N | 104°44'06.582"W | 0.63          |                         |
| 9032.00  | 89.800          | 359.900     | 7333.01  | 2209.76        | 2103.43    | 821.42    | 40°08'09.474"N | 104°44'06.580"W | 0.55          |                         |
| 9222.00  | 90.300          | 1.100       | 7332.85  | 2397.44        | 2293.42    | 823.08    | 40°08'11.352"N | 104°44'06.559"W | 0.68          |                         |
| 9412.00  | 88.800          | 0.700       | 7334.34  | 2585.32        | 2483.38    | 826.06    | 40°08'13.229"N | 104°44'06.520"W | 0.82          |                         |
| 9601.00  | 88.800          | 0.600       | 7338.30  | 2772.05        | 2672.33    | 828.21    | 40°08'15.096"N | 104°44'06.492"W | 0.05          |                         |
| 9696.00  | 89.500          | 0.200       | 7339.71  | 2865.86        | 2767.31    | 828.87    | 40°08'16.035"N | 104°44'06.484"W | 0.85          |                         |
| 9791.00  | 90.500          | 1.600       | 7339.71  | 2959.80        | 2862.30    | 830.36    | 40°08'16.973"N | 104°44'06.465"W | 1.81          |                         |
| 9885.00  | 90.600          | 1.300       | 7338.81  | 3052.88        | 2956.26    | 832.74    | 40°08'17.902"N | 104°44'06.434"W | 0.34          |                         |
| 10073.00 | 90.100          | 1.900       | 7337.66  | 3239.11        | 3144.18    | 837.99    | 40°08'19.759"N | 104°44'06.366"W | 0.42          |                         |
| 10264.00 | 90.100          | 0.900       | 7337.32  | 3428.22        | 3335.12    | 842.66    | 40°08'21.646"N | 104°44'06.306"W | 0.52          |                         |
| 10454.00 | 90.400          | 0.600       | 7336.49  | 3616.03        | 3525.11    | 845.14    | 40°08'23.523"N | 104°44'06.274"W | 0.22          |                         |
| 10644.00 | 89.500          | 1.900       | 7336.66  | 3804.09        | 3715.06    | 849.29    | 40°08'25.400"N | 104°44'06.221"W | 0.83          |                         |
| 10739.00 | 90.500          | 0.400       | 7336.66  | 3898.09        | 3810.03    | 851.19    | 40°08'26.339"N | 104°44'06.196"W | 1.90          |                         |
| 10928.00 | 90.800          | 0.600       | 7334.52  | 4084.77        | 3999.01    | 852.84    | 40°08'28.206"N | 104°44'06.175"W | 0.19          |                         |
| 11119.00 | 90.200          | 0.100       | 7332.85  | 4273.36        | 4190.00    | 854.01    | 40°08'30.094"N | 104°44'06.160"W | 0.41          |                         |
| 11307.00 | 89.800          | 0.300       | 7332.85  | 4458.91        | 4378.00    | 854.67    | 40°08'31.952"N | 104°44'06.151"W | 0.24          |                         |
| 11496.00 | 90.000          | 358.800     | 7333.18  | 4645.09        | 4566.99    | 853.18    | 40°08'33.819"N | 104°44'06.170"W | 0.80          |                         |
| 11686.00 | 88.700          | 359.500     | 7335.33  | 4832.01        | 4756.95    | 850.36    | 40°08'35.696"N | 104°44'06.206"W | 0.78          |                         |
| 11782.00 | 90.600          | 0.100       | 7335.92  | 4926.65        | 4852.94    | 850.03    | 40°08'36.645"N | 104°44'06.210"W | 2.08          |                         |
| 11877.00 | 89.900          | 2.700       | 7335.51  | 5020.70        | 4947.90    | 852.35    | 40°08'37.583"N | 104°44'06.181"W | 2.83          |                         |
| 11999.00 | 88.900          | 359.800     | 7336.78  | 5141.43        | 5069.85    | 855.01    | 40°08'38.789"N | 104°44'06.146"W | 2.51          | LAST BHI MWD+IFR SURVEY |
| 12064.00 | 88.900          | 359.800     | 7338.03  | 5205.50        | 5134.84    | 854.78    | 40°08'39.431"N | 104°44'06.149"W | 0.00          | PROJECTION TO BIT       |

## HOLE & CASING SECTIONS - Ref Wellbore: TURKEY SPRINGS 1N-14HZ AWP Ref Wellpath: TURKEY SPRINGS 1N-14HZ AWP

| String/Diameter         | Start MD [ft] | End MD [ft] | Interval [ft] | Start TVD [ft] | End TVD [ft] | Start N/S [ft] | Start E/W [ft] | End N/S [ft] | End E/W [ft] |
|-------------------------|---------------|-------------|---------------|----------------|--------------|----------------|----------------|--------------|--------------|
| 12.25in Open Hole       | 13.00         | 948.00      | 935.00        | 13.00          | 947.95       | 0.00           | 0.00           | 1.57         | 7.84         |
| 9.625in Casing Surface  | 13.00         | 1025.00     | 1012.00       | 13.00          | 1024.95      | 0.00           | 0.00           | 1.70         | 7.96         |
| 8.75in Open Hole        | 1025.00       | 7806.00     | 6781.00       | 1024.95        | 7333.55      | 1.70           | 7.96           | 877.65       | 833.08       |
| 7in Casing Intermediate | 13.00         | 7792.00     | 7779.00       | 13.00          | 7333.02      | 0.00           | 0.00           | 863.67       | 833.42       |
| 6.125in Open Hole       | 7806.00       | 12064.00    | 4258.00       | 7333.55        | 7338.03      | 877.65         | 833.08         | 5134.84      | 854.78       |



# Actual Wellpath Report

TURKEY SPRINGS 1N-14HZ AWP

Page 5 of 6



| REFERENCE WELLPATH IDENTIFICATION |                                 |          |  |
|-----------------------------------|---------------------------------|----------|--|
| Operator                          | KERR-MCGEE OIL & GAS ONSHORE LP | Slot     | SLOT#28 TURKEY SPRINGS 1N-14HZ (300'FNL & 900'FEL, SEC.23) |
| Area                              | COLORADO                        | Well     | TURKEY SPRINGS 1N-14HZ                                     |
| Field                             | WELD COUNTY (KERR MCGEE)        | Wellbore | TURKEY SPRINGS 1N-14HZ AWB                                 |
| Facility                          | SEC.23-T2N-R66W                 |          |  |

| TARGETS  |         |          |            |           |                   |                    |                |                 |         |
|--|---------|----------|------------|-----------|-------------------|--------------------|----------------|-----------------|---------|
| Name   | MD [ft] | TVD [ft] | North [ft] | East [ft] | Grid East [US ft] | Grid North [US ft] | Latitude       | Longitude       | Shape   |
| SECTION 14 LINES   |         | 0.00     | 0.00       | 0.00      | 3213039.23        | 1291187.62         | 40°07'48.688"N | 104°44'17.156"W | polygon |
| SECTION 23 LINES   |         | 0.00     | 0.00       | 0.00      | 3213039.23        | 1291187.62         | 40°07'48.688"N | 104°44'17.156"W | polygon |
| SEC. 14 HARDLINES (460' SETBACKS)                                    |         | 7000.00  | 0.00       | 0.00      | 3213039.23        | 1291187.62         | 40°07'48.688"N | 104°44'17.156"W | polygon |
| SEC. 23 HARDLINES (460' SETBACKS)                                    |         | 7000.00  | 0.00       | 0.00      | 3213039.23        | 1291187.62         | 40°07'48.688"N | 104°44'17.156"W | polygon |
| TURKEY SPRINGS 1N-14HZ BHL ON PLAT REV-1 (460'FNL & 409'FEL, SEC.14) |         | 7325.00  | 5159.84    | 500.43    | 3213495.29        | 1296351.35         | 40°08'39.678"N | 104°44'10.712"W | point   |
| TURKEY SPRINGS 1N-14HZ BHL REV-3 (460'FNL & 59'FEL, SEC.14)          |         | 7345.00  | 5159.84    | 850.43    | 3213845.26        | 1296354.36         | 40°08'39.678"N | 104°44'06.205"W | point   |
| TURKEY SPRINGS 1N-14HZ BHL REV-2 (460'FNL & 59'FEL, SEC.14)          |         | 7367.00  | 5159.84    | 850.43    | 3213845.26        | 1296354.36         | 40°08'39.678"N | 104°44'06.205"W | point   |
| TURKEY SPRINGS 1N-14HZ LAND BOX                                      |         | 8000.00  | 0.00       | 0.00      | 3213039.23        | 1291187.62         | 40°07'48.688"N | 104°44'17.156"W | polygon |

| WELLPATH COMPOSITION - Ref Wellbore: TURKEY SPRINGS 1N-14HZ AWB |             |                                      |  |  | Ref Wellpath: TURKEY SPRINGS 1N-14HZ AWP |  |
|---|-------------|--------------------------------------|--|--|--|--|
| Start MD [ft]   | End MD [ft] | Positional Uncertainty Model         | Log Name/Comment                             |  | Wellbore                                 |  |
| 13.00   | 948.00      | Generic gyro - continuous (Standard) | MS GYRO SURVEYS <113-948>                    |  | TURKEY SPRINGS 1N-14HZ AWB               |  |
| 948.00  | 6790.00     | NaviTrak (MAGCORR,IFR)               | BHI MWD+IFR SURVEYS 8 3/4" HOLE <1058-6790>  |  | TURKEY SPRINGS 1N-14HZ AWB               |  |
| 6790.00   | 11999.00    | NaviTrak (MAGCORR,IFR)               | BHI MWD+IFR SURVEYS 6 1/8" HOLE <6854-11999> |  | TURKEY SPRINGS 1N-14HZ AWB               |  |
| 11999.00  | 12064.00    | Blind Drilling (std)                 | Projection to bit                            |  | TURKEY SPRINGS 1N-14HZ AWB               |  |





# Actual Wellpath Report

TURKEY SPRINGS 1N-14HZ AWP

Page 6 of 6



| REFERENCE WELLPATH IDENTIFICATION |                                 |          |  |  |
|-----------------------------------|---------------------------------|----------|--|--|
| Operator                          | KERR-MCGEE OIL & GAS ONSHORE LP | Slot     | SLOT#28 TURKEY SPRINGS 1N-14HZ (300'FNL & 900'FEL, SEC.23) |  |
| Area                              | COLORADO                        | Well     | TURKEY SPRINGS 1N-14HZ                                     |  |
| Field                             | WELD COUNTY (KERR MCGEE)        | Wellbore | TURKEY SPRINGS 1N-14HZ AWP                                 |  |
| Facility                          | SEC.23-T2N-R66W                 |          |  |  |

| WELLPATH COMMENTS |                    |                |             |                           |
|-------------------|--------------------|----------------|-------------|---------------------------|
| MD<br>[ft]        | Inclination<br>[°] | Azimuth<br>[°] | TVD<br>[ft] | Comment                   |
| 13.00             | 0.000              | 48.790         | 13.00       | TIE-ON                    |
| 113.00            | 0.260              | 48.790         | 113.00      | BEGIN GYRO SURVEYS        |
| 948.00            | 0.140              | 347.780        | 947.95      | TIE-INTO GYRO SURVEYS     |
| 1058.00           | 0.300              | 84.200         | 1057.95     | BEGIN BHI MWD+IFR SURVEYS |
| 7792.00           | 87.274             | 358.712        | 7333.02     | 7" CASING POINT           |
| 11999.00          | 88.900             | 359.800        | 7336.78     | LAST BHI MWD+IFR SURVEY   |
| 12064.00          | 88.900             | 359.800        | 7338.03     | PROJECTION TO BIT         |