



06/27/2013

VIA ELECTRONIC TRANSMITTAL

Colorado Oil and Gas Conservation Commission
Attn: Matt Lepore, Director
1120 Lincoln Street, Suite 801
Denver, CO 80203

RE: 30-Day Affidavit and Certification Letter

DT-Habitat #1-5-6 Well: 299' FNL, 1835' FEL, Sec. 5-T5N-R65W, Weld County, Colorado
DT-Habitat #2-5-6 Well: 315' FNL, 1835' FEL, Sec. 5-T5N-R65W, Weld County, Colorado
DT-Habitat #3-5-6 Well: 331' FNL, 1835' FEL, Sec. 5-T5N-R65W, Weld County, Colorado
DT-Habitat #4-5-6 Well: 347' FNL, 1834' FEL, Sec. 5-T5N-R65W, Weld County, Colorado
DT-Habitat #5-5-6 Well: 363' FNL, 1834' FEL, Sec. 5-T5N-R65W, Weld County, Colorado

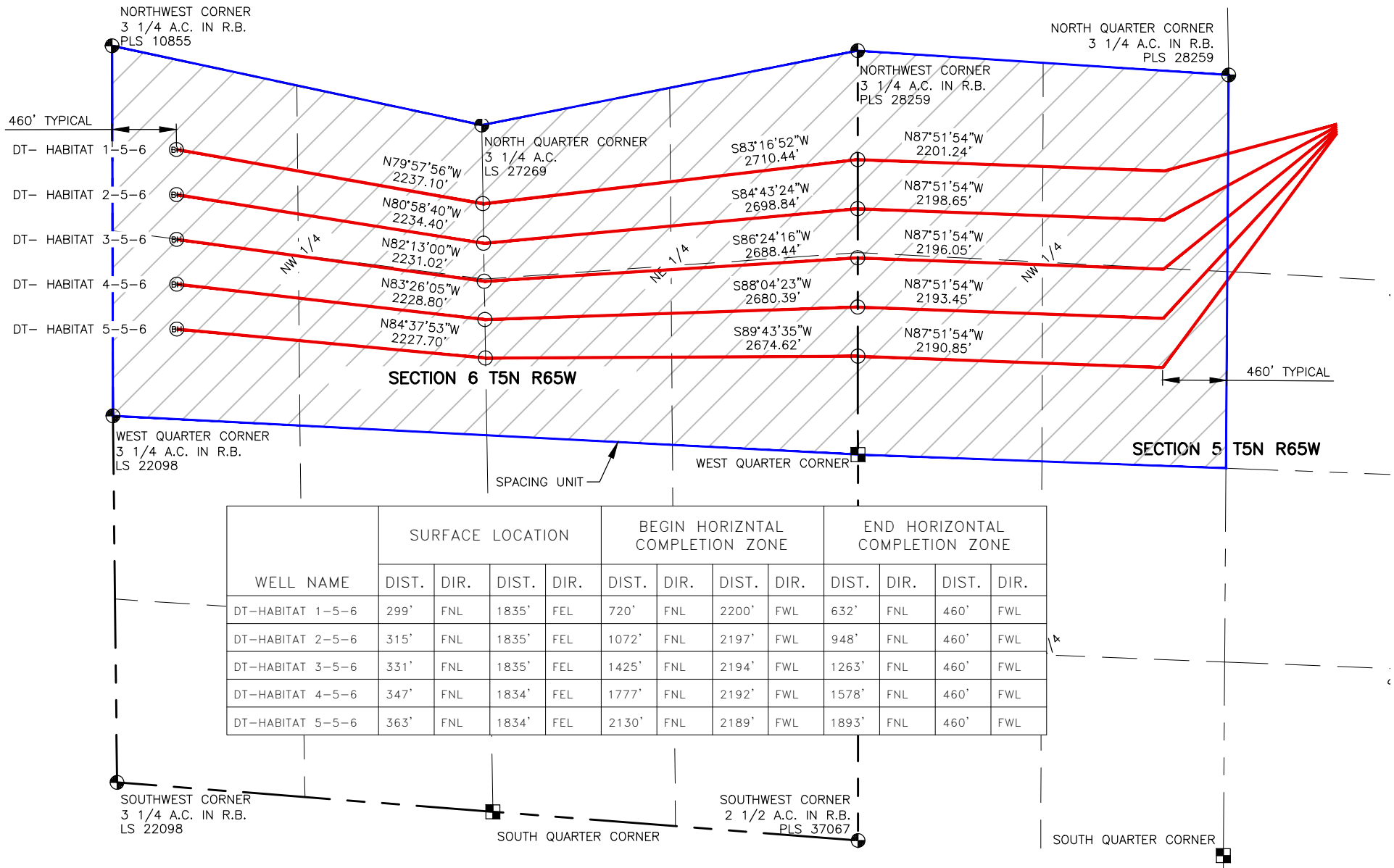
Dear Mr. Lepore,

Mineral Resources, Inc. (MRI) hereby certifies that thirty (30) day notice has been given to all owners in the proposed wellbore spacing unit in accordance with Rule 318A.e(6). The notices were sent on 05/01/13. MRI has received no objections to the subject well locations, proposed spacing units, or additional producing information from any owner as described in C.R.S. §34-60-103(7). The thirty (30) day objection period has expired. MRI respectfully requests that the Director approve the wells. Should you have any questions or concerns please contact the undersigned at 303-216-0703.

Sincerely,

Clayton L. Doke
Senior Engineer
Peterson Energy, a Division of IPT
Consultants to Tekton Windsor, LLC

NAME: HABITAT SPACING UNIT: NW/4, & NE/4, SEC 6, T5N, 65W; & NW/4, SEC 5, T5N, 65W; UNIT ACREAGE: 480



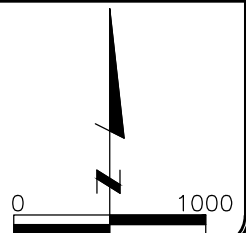
LAMP RYNEARSON
& ASSOCIATES

4715 Innovation Drive 970.226.0342 | P
Fort Collins, CO 80525 970.226.0879 | F
www.LRA-Inc.com

Proposed Well Location Exhibit
Downtown Directional Project
Habitat Spacing Unit

LEGEND

- ALIQUOT CORNER
- BOTTOM HOLE
- COMPUTED FROM GLO RECORDS
- A.C. ALUMINUM CAP
- R.B. RANGE BOX



drawn by
SSZ
path\filename

date
4/29/13

cogcc id
432599

project - task number
0211012.02-502

book and page
MRI02, 1

surface - location
NW/4 NE/4 SEC 5 T5N R65W

P:_Engineering\0211012.02\DRAWINGS\EXHIBITS\0211012-02PSUE- HABITAT.dwg