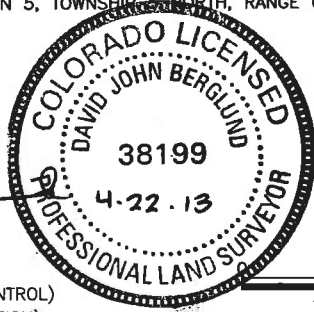


DAVID JOHN BERGLUND  
 COLORADO PLS 38199

DATE OF SURVEY: 8/19/2010 (SECTION CONTROL)  
 DATE OF SURVEY: 11/12/2012 (WELL LOCATION)



500 1000 2000  
 1"=1000' US SURVEY FEET



**LAMP RYNEARSON  
 & ASSOCIATES**

4715 Innovation Drive 970.226.0342 | P  
 Fort Collins, CO 80525 970.226.0879 | F  
 www.LRA-Inc.com

Proposed Well Location Exhibit  
 DT-Habitat 1-5-6  
 1 of 2

drawn by  
 SSZ

date  
 4/9/2013

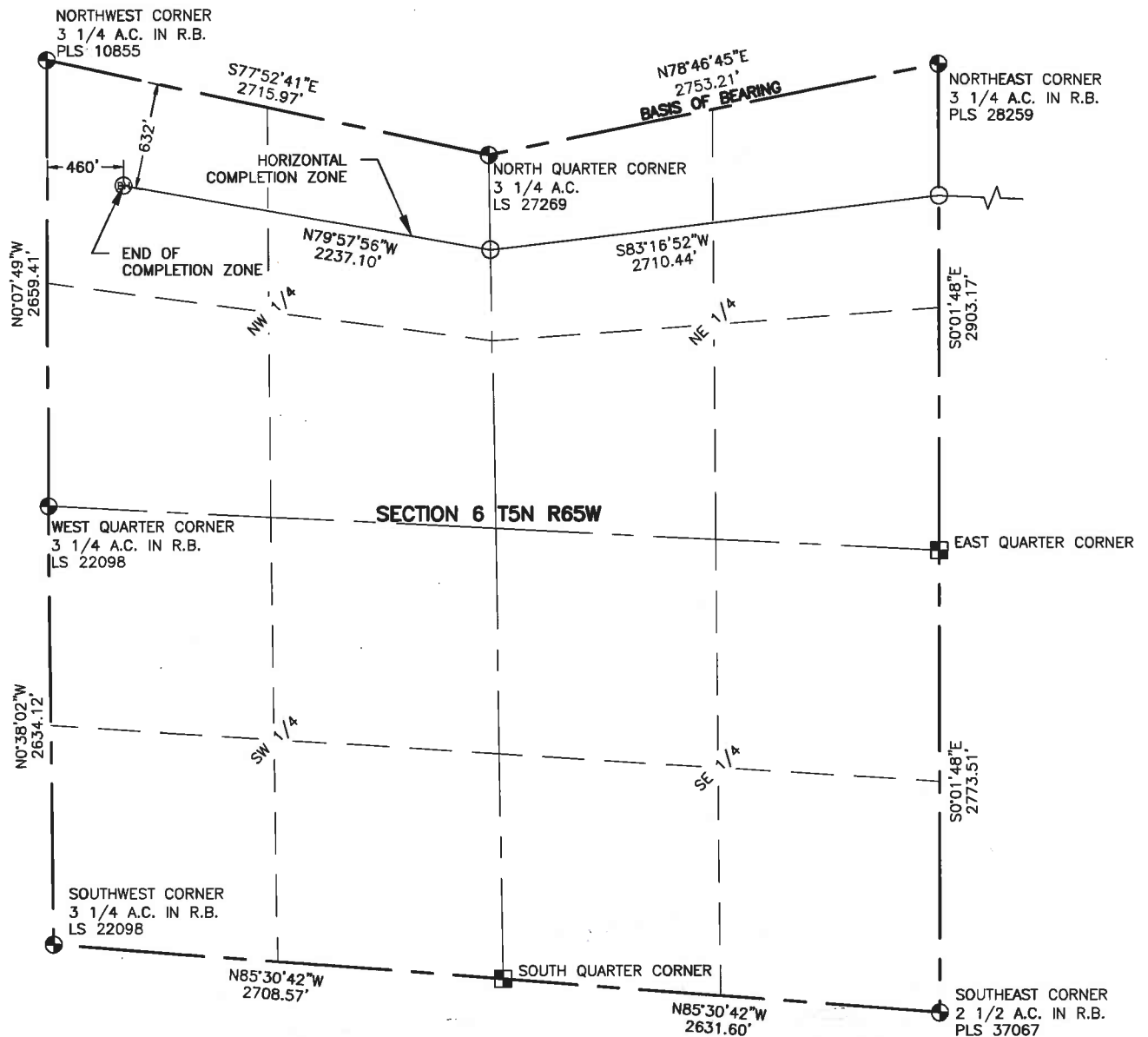
cogcc id

project - task number  
 0211012.02

book and page  
 MRI02, 1

surface - location  
 NW/4 NE/4 SEC 5 T5N R65W

path\filename P:\\_Engineering\0211012.02\DRAWINGS\EXHIBITS\0211012-02EXWPF.dwg



#### NOTES:

DISTANCES ARE MEASURED PERPENDICULAR TO NEAREST SECTION LINE AND ARE SHOWN ON THE SAME SIDE OF THE SECTION LINE WHERE THE WELL IS LOCATED.

THIS MAP DOES NOT REPRESENT A MONUMENTED BOUNDARY SURVEY.

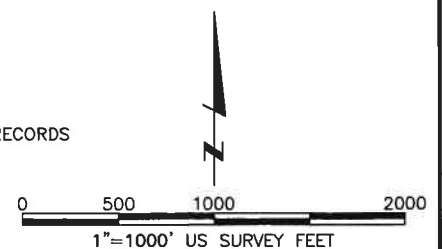
#### BASIS OF BEARING:

THE NORTH LINE OF THE NORTHEAST QUARTER OF SECTION 6-T5N-R65W BEARS N78°46'45"E BETWEEN THE NORTH QUARTER CORNER OF SECTION 6 MONUMENTED WITH A 3 1/4" A.C. STAMPED "LS 27269" AND THE NORTHEAST CORNER OF SECTION 6 MONUMENTED WITH A 3 1/4" A.C. IN R.B. STAMPED "PLS 28259" BASED ON THE COLORADO NORTH 0501 STATE PLANE COORDINATE SYSTEM.

ELEVATIONS ARE BASED ON NAVD 88, AS OBSERVED FROM GPS OBSERVATIONS

#### LEGEND

- ALIQUOT CORNER
- ⊕ BOTTOM HOLE
- COMPUTED FROM GLO RECORDS
- A.C. ALUMINUM CAP
- R.B. RANGE BOX



**LAMP RYNEARSON  
& ASSOCIATES**

4715 Innovation Drive 970.226.0342 | P  
Fort Collins, CO 80525 970.226.0879 | F  
www.LRA-inc.com

Proposed Well Location Exhibit  
DT-Habitat 1-5-6  
2 of 2

drawn by  
SSZ

date  
4/22/13

cogcc id

project - task number  
0211012.02

book and page  
MRI02, 1

surface - location  
NW/4 NE/4 SEC 5 T5N R65W

path\filename P:\Engineering\0211012.02\DRAWINGS\EXHIBITS\0211012-02EXWPFA.dwg