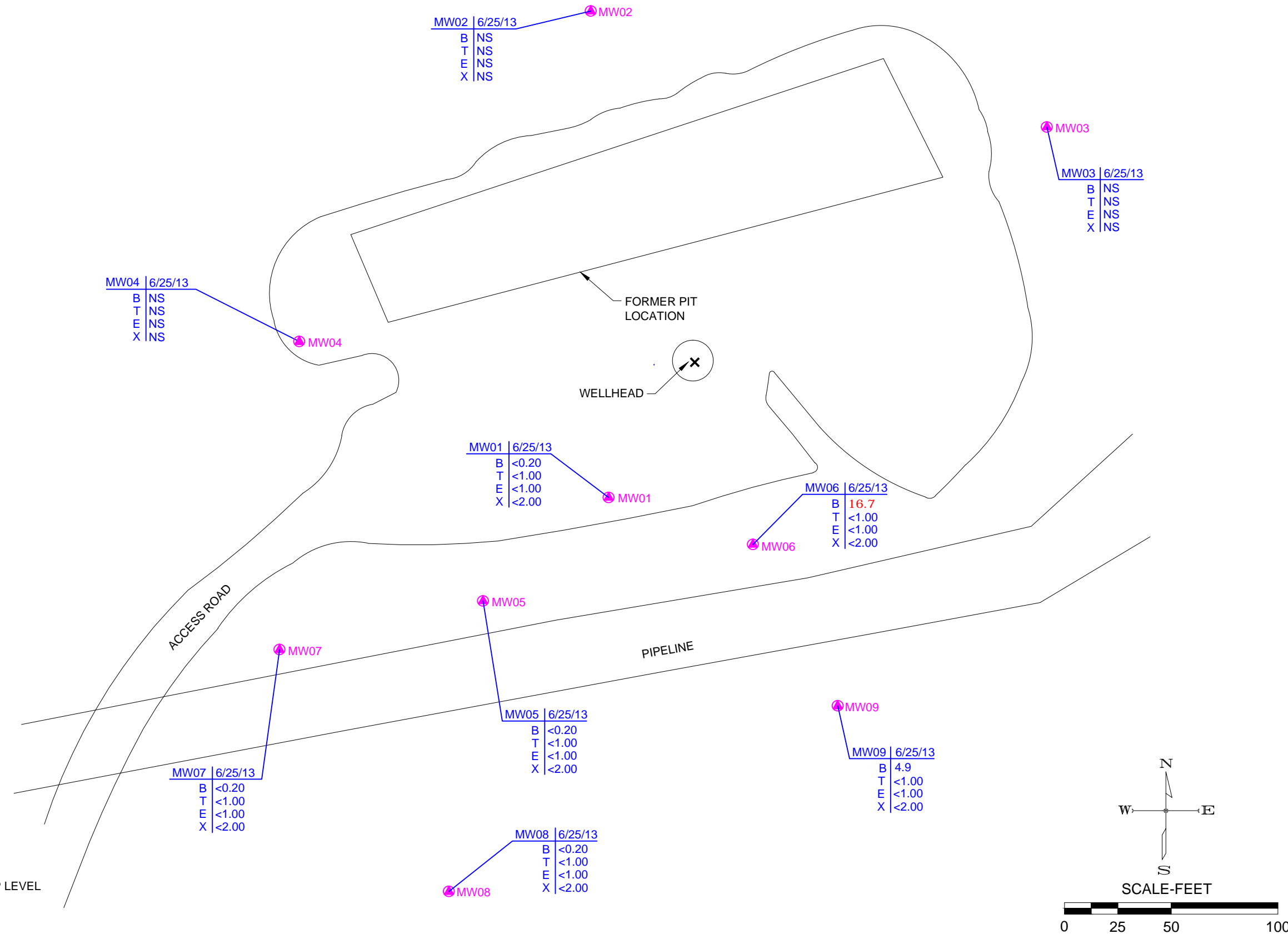


F:\Projects\012-1539\_GJ\_RMV\_216-21\CMMR\Exhibits\2013\2013\_02\121539\_02\_2013\_GWA.dwg Layout: GWA

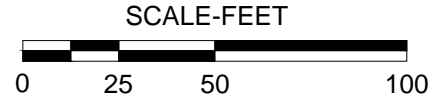
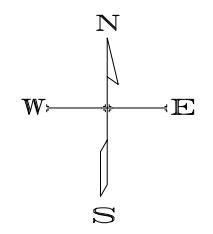


**LEGEND:**

MW01 MONITORING WELL/BOREHOLE

CHEMICAL DATA

- B = BENZENE (ug/l)
- T = TOLUENE (ug/l)
- E = ETHYLBENZENE (ug/l)
- X = XYLENES (ug/l)
- BOLD** = EXCEEDS COGCC GROUNDWATER CLEANUP LEVEL
- NS = NOT SAMPLED



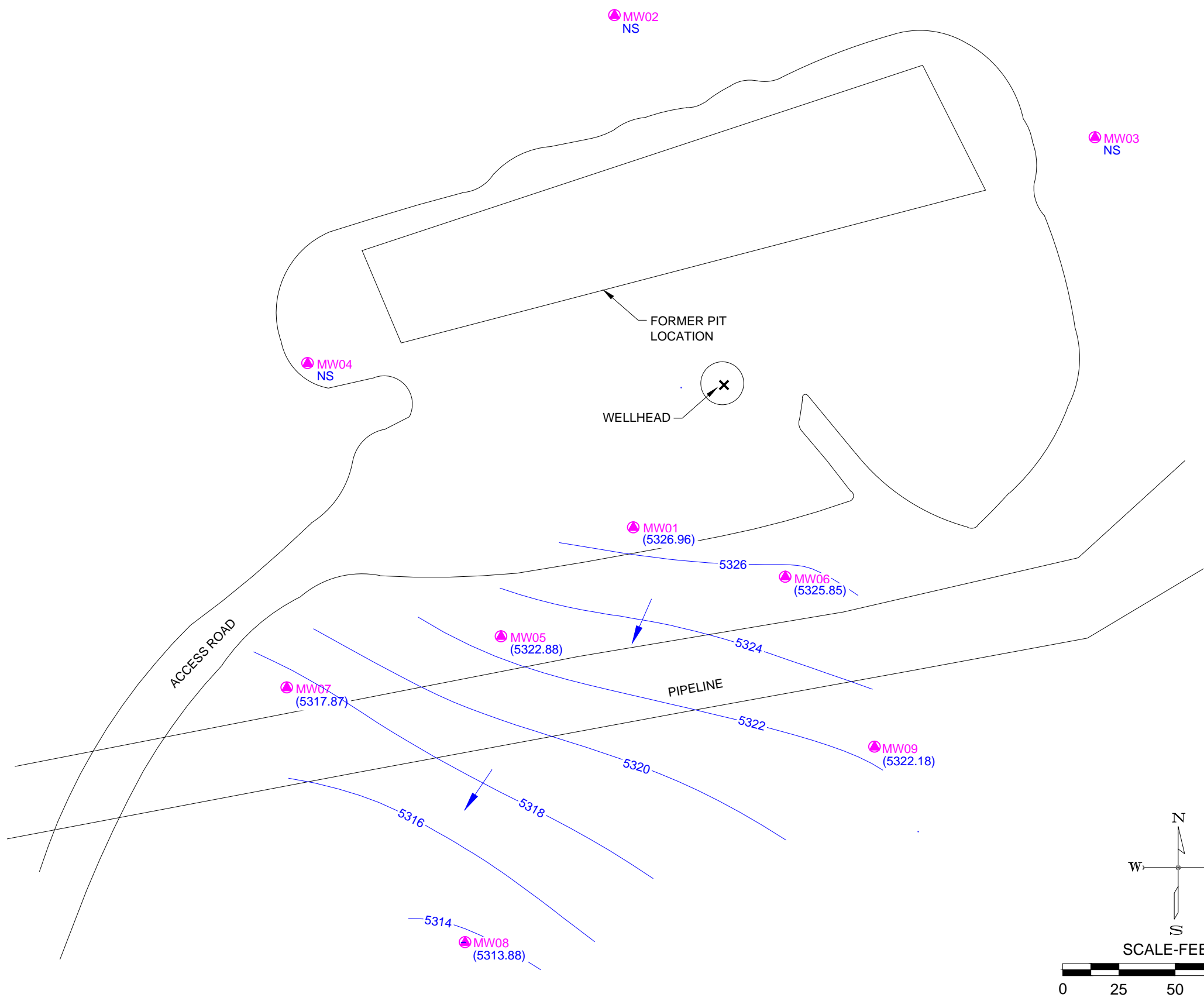
PROJECT NO:	012-1539
DRAWN BY:	sds
DATE:	07.18.2013

GROUNDWATER ANALYTICAL RESULTS - JUNE 2013  
 WPX RMV 216-21  
 WPX ENERGY ROCKY MOUNTAIN, LLC  
 GARFIELD COUNTY, COLORADO

**OLSSON ASSOCIATES**  
 760 Horizon Drive, Ste. 102  
 Grand Junction, CO 81506  
 TEL 970.263.7800  
 FAX 970.263.7456

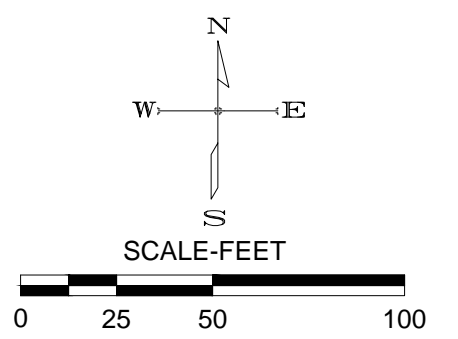
FIGURE  
**3**

F:\Projects\012-1539\_GJ\_RMV\_216-21\CMM\Exhibits\2013\2013\_02\121539\_02\_2013\_PS.dwg Layout: P\_SJRF



**LEGEND:**

- MW01 MONITORING WELL/BOREHOLE
- 5325.0 GROUNDWATER ELEVATION CONTOUR (FT-MSL)
- (5325.55) GROUNDWATER ELEVATION (FT-MSL)
- GROUNDWATER FLOW DIRECTION
- NS NOT SAMPLED



PROJECT NO:	012-1539
DRAWN BY:	sds
DATE:	07.18.2013

POTENTIOMETRIC SURFACE MAP - JUNE 2013  
 WPX RMV 216-21  
 WPX ENERGY ROCKY MOUNTAIN, LLC  
 GARFIELD COUNTY, COLORADO

**OLSSON ASSOCIATES**  
 760 Horizon Drive, Ste. 102  
 Grand Junction, CO 81506  
 TEL 970.263.7800  
 FAX 970.263.7456

FIGURE	2
--------	---

**Table 1**  
**RMV 216-21 Groundwater Monitoring**  
**2013 Water Quality Data Summary**

SAMPLE SUMMARY	
Location Description	RMV 216-21 GW Monitoring
Sample Type	Groundwater

LABORATORY DATA SUMMARY									
Sample ID	CDPHE Regulation 41 Standards	COGCC Table 910-1 Standards	UNITS	RMV 216-21 MW1	RMV 216-21 MW1	RMV 216-21 MW2	RMV 216-21 MW2	RMV 216-21 MW3	RMV 216-21 MW3
Depth to Water (feet)				84.45	84.54	79.2	NS	68.14	NS
Sample Date				3/7/2013	6/25/2013	3/7/2013	6/25/2013	3/7/2013	6/25/2013
Analytical Parameters									

BTEX									
Benzene	5	5	ug/l	<0.20	<0.20	<0.20	NS	<0.20	NS
Toluene	560 to 1000	560 to 1000	ug/l	<1.0	<1.0	<1.0	NS	<1.0	NS
Ethylbenzene	700	700	ug/l	<1.0	<1.0	<1.0	NS	<1.0	NS
Xylene (total)	1400 to 10000	1400 to 10000	ug/l	<2.0	<2.0	<2.0	NS	<2.0	NS

Metals									
Calcium	NA	NA	mg/l	212	214	209	NS	222	NS
Iron	0.3	NA	mg/l	<0.07	<0.07	<0.07	NS	<0.07	NS
Magnesium	NA	NA	mg/l	213	201	171	NS	184	NS
Manganese	0.05	NA	mg/l	0.369	0.378	0.0488	NS	0.137	NS
Potassium	23	NA	mg/l	6.34	5.24	6.43	NS	6.62	NS
Selenium	0.05	NA	mg/l	<0.05	<0.05	<0.05	NS	<0.05	NS
Sodium	390	NA	mg/l	446	391	343	NS	358	NS

General Chemistry									
Alkalinity, Bicarbonate as CaCO3	NA	NA	mg/l	726	577	638	NS	567	NS
Alkalinity, Carbonate	NA	NA	mg/l	<5.0	<5.0	<5.0	NS	<5.0	NS
Alkalinity, Total as CaCO3	NA	NA	mg/l	729	577	638	NS	567	NS
Chloride	250	1.25 x bkgd	mg/l	225	213	17	NS	29.2	NS
Nitrogen, Nitrate	10	NA	mg/l	31.1	32	25.9	NS	44.9	NS
Nitrogen Nitrite	1.0	NA	mg/l	0.15	0.16	<0.020 <sup>b</sup>	NS	0.04	NS
Solids, Total Dissolved	10,000	NA	mg/l	3210	3230	2780	NS	2890	NS
Sulfate	250	1.25 x bkgd	mg/l	1390	1460	1350	NS	1400	NS
pH	NA	NA	su	7.04	7.2	7.13	NS	7.16	NS

Field Readings									
Temperature	NA	NA	deg. C	14.34	14.20	14.20	NS	14.53	NS
Specific Conductivity	NA	NA	mS/cm	3.91	3.852	2.94	NS	3.36	NS
Dissolved Oxygen	NA	NA	mg/l	1.05	1.26	0.81	NS	1.48	NS
pH	NA	NA	su	7.60	7.29	7.04	NS	7.67	NS
Solids, Total Dissolved	NA	NA	mg/l	2.5	2.5	1.9	NS	2.2	NS
Turbidity	NA	NA	NTU	5999	NT	5999	NS	1509	NS

ug/l -micrograms per liter  
mg/l -milligrams per liter  
J - indicates an estimated value  
umhos/cm - micromhos per centimeter  
mS/cm - millisiemens per centimeter  
su - standard units  
NA - not applicable  
NTU - nephelometric turbidity units  
NT - not tested

a - Dilution required due to matrix interference  
b - Elevated detection limit due to matrix interference  
c - Elevated detection limit due to dilution required for possible matrix interference

<b>SAMPLE SUMMARY</b>
Location Description
Sample Type

**LABORATORY DATA SUMMARY**

Sample ID	RMV 216-21 MW4	RMV 216-21 MW4	RMV 216-21 MW5	RMV 216-21 MWX	RMV 216-21 MW5	RMV 216-21 MW6	RMV 216-21 MW6	RMV 216-21 MW7
Depth to Water (feet)	85.69	NS	85.81	MW5 Duplicate	85.95	81.79	82.89	90.79
Sample Date	3/7/2013	6/25/2013	3/7/2013	3/7/2013	6/25/2013	3/7/2013	6/25/2013	3/7/2013
Analytical Parameters								

<b>BTEX</b>								
Benzene	<0.20	NS	<0.20	<0.20	<0.20	17.3	16.7	<0.20
Toluene	<1.0	NS	<1.0	<1.0	<1.0	<1.0	<1.0	<1.0
Ethylbenzene	<1.0	NS	<1.0	<1.0	<1.0	<1.0	<1.0	<1.0
Xylene (total)	<2.0	NS	<2.0	<2.0	<2.0	<2.0	<2.0	<2.0

<b>Metals</b>								
Calcium	225	NS	221	221	222	217	212	224
Iron	<0.07	NS	<0.07	<0.07	<0.07	<0.07	<0.07	<0.07
Magnesium	183	NS	234	234	227	252	234	219
Manganese	<0.005	NS	0.123	0.124	0.113	0.182	0.171	0.0076
Potassium	6.59	NS	6.51	6.29	5.17	7.07	5.45	6.46
Selenium	<0.05	NS	<0.05	<0.05	<0.05	<0.05	<0.05	<0.05
Sodium	345	NS	500	490	446	593	513	464

<b>General Chemistry</b>								
Alkalinity, Bicarbonate as CaCO3	577	NS	565	548	525	1050	827	727
Alkalinity, Carbonate	<5.0	NS	<5.0	<5.0	<5.0	<5.0	<5.0	<5.0
Alkalinity, Total as CaCO3	577	NS	565	548	525	1050	827	727
Chloride	15.6	NS	325	331	325	493	466	215
Nitrogen, Nitrate	19.7	NS	33.1	33.4	33.7	35	35.3	24.6
Nitrogen Nitrite	<0.020 <sup>b</sup>	NS	0.031	0.043	<0.040	4.5	4.1	0.024
Solids, Total Dissolved	2980	NS	3470	3470	3530	3830	3570	3330
Sulfate	1480	NS	1480	1480	1490	1460	1440	1490
pH	7.14	NS	7.07	7.12	7.47	7.04	7.23	7.15

<b>Field Readings</b>								
Temperature	14.37	NS	26.37	26.37	14.10	18.93	15.10	13.77
Specific Conductivity	3.24	NS	4.24	4.24	4.166	4.93	4.687	3.94
Dissolved Oxygen	2.21	NS	1.65	1.65	0.58	1.3	0.2	2.17
pH	7.00	NS	6.97	6.97	7.22	6.95	7.13	7.60
Solids, Total Dissolved	2.1	NS	2.8	2.8	2.7	3.2	3.0	2.5
Turbidity	2000	NS	11.3	11.3	NT	859	NT	1834

ug/l -micrograms per liter  
mg/l -milligrams per liter  
J - indicates an estimated value  
umhos/cm - micromhos per centimeter  
mS/cm - millisiemens per centimeter  
su - standard units  
NA - not applicable  
NTU - nephelometric turbidity units  
NT - not tested

**Table 1**  
**RMV 216-21 Groundwater Monitoring**  
**2013 Water Quality Data Summary**

<b>SAMPLE SUMMARY</b>
Location Description
Sample Type

<b>LABORATORY DATA SUMMARY</b>					
Sample ID	RMV 216-21 MW7	RMV 216-21 MW8	RMV 216-21 MW8	RMV 216-21 MW9	RMV 216-21 MW9
Depth to Water (feet)	90.95	88.23	88.34	81.54	81.66
Sample Date	6/25/2013	3/7/2013	6/25/2013	3/7/2013	6/25/2013
<b>Analytical Parameters</b>					
<b>BTEX</b>					
Benzene	<0.20	<0.20	<0.20	2.9	4.9
Toluene	<1.0	<1.0	<1.0	<1.0	<1.0
Ethylbenzene	<1.0	<1.0	<1.0	<1.0	<1.0
Xylene (total)	<2.0	<2.0	<2.0	<2.0	<2.0
<b>Metals</b>					
Calcium	220	202	199	256	236
Iron	<0.07	<0.07	<0.07	<0.07	<0.07
Magnesium	206	248	236	266	245
Manganese	0.0069	0.0133	0.0168	0.0933	0.1340
Potassium	5.39	6.67	5.5	7.73	6.2
Selenium	<0.05	<0.05	<0.05	<0.05	<0.05
Sodium	403	494	4.41	502	457
<b>General Chemistry</b>					
Alkalinity, Bicarbonate as CaCO3	615	822	541	975	576
Alkalinity, Carbonate	<5.0	<5.0	<5.0	<5.0	<5.0
Alkalinity, Total as CaCO3	615	822	541	975	576
Chloride	192	319	296	427	383
Nitrogen, Nitrate	25.9	33.9	33.4	46.8	45.8
Nitrogen Nitrite	<0.040	<0.020 <sup>D</sup>	<0.040	3.3	2.7
Solids, Total Dissolved	3270	3490	3490	3830	3710
Sulfate	1530	1500	1440	1560	1540
pH	7.29	7.17	7.25	7.03	7.28
<b>Field Readings</b>					
Temperature	14.40	17.48	14.30	14.31	15.30
Specific Conductivity	3.802	4.13	4.146	4.79	4.47
Dissolved Oxygen	2.01	1.6	0.78	0.92	0.52
pH	7.26	7.01	7.25	7.62	7.17
Solids, Total Dissolved	2.5	2.7	2.7	3.1	2.9
Turbidity	NT	568	NT	2000	NT

ug/l -micrograms per liter  
mg/l -milligrams per liter  
J - indicates an estimated value  
umhos/cm - micromhos per centimeter  
mS/cm - millisiemens per centimeter  
su - standard units  
NA - not applicable  
NTU - nephelometric turbidity units  
NT - not tested