



Bringelson Ranch #3-33-9-58

TVD
2":100'

Company: Carrizo Oil & Gas, Inc.

State: CO

Well Name: Bringelson Ranch #3-33-9-58

County/Parish: Weld

UWI: 5-123-36331-00

Survey Company: PDSI

Rig Id: Xtreme 19

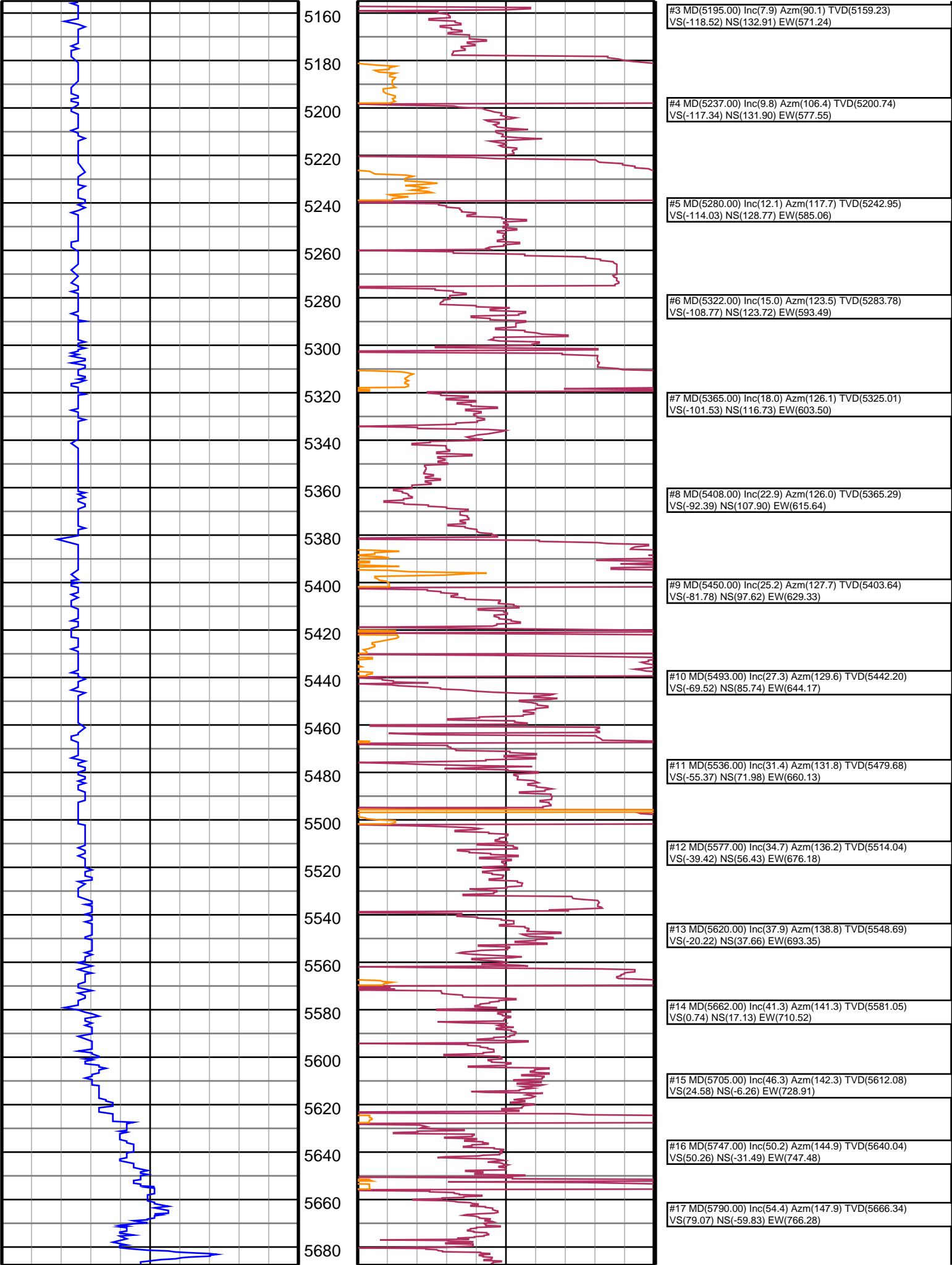
Job number: DL1536

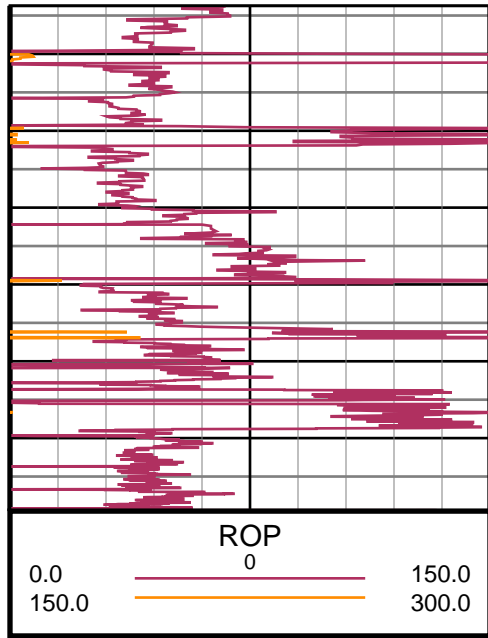
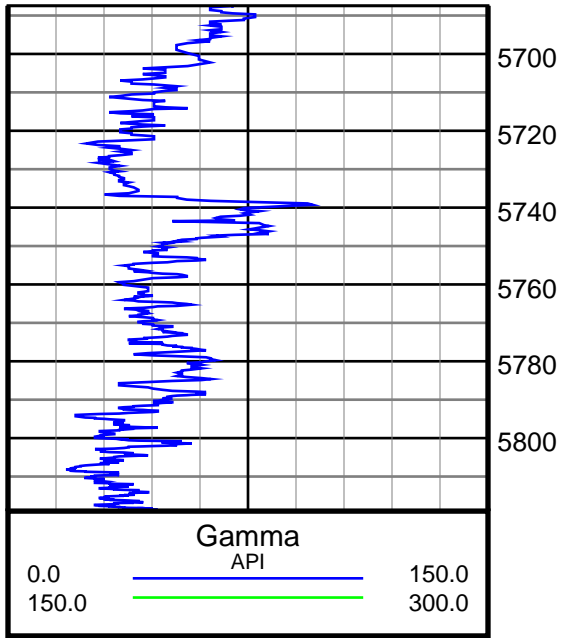
Gamma
API

0.0	_____	150.0
150.0	_____	300.0

ROP
0

0.0	_____	150.0
150.0	_____	300.0





#18 MD(5833.00) Inc(59.1) Azm(151.4) TVD(5689.91)
VS(110.54) NS(-90.86) EW(784.42)

#19 MD(5875.00) Inc(63.0) Azm(155.0) TVD(5710.24)
VS(143.75) NS(-123.66) EW(800.96)

#20 MD(5899.00) Inc(64.6) Azm(156.6) TVD(5720.84)
VS(163.60) NS(-143.30) EW(809.78)

#21 MD(5947.00) Inc(68.8) Azm(159.0) TVD(5739.82)
VS(204.82) NS(-184.11) EW(826.42)

#22 MD(5989.00) Inc(71.8) Azm(163.0) TVD(5753.99)
VS(242.51) NS(-221.49) EW(839.28)

#23 MD(6032.00) Inc(74.3) Azm(165.7) TVD(5766.52)
VS(282.38) NS(-261.09) EW(850.37)

#25 MD(6117.00) Inc(78.1) Azm(170.3) TVD(5786.52)
VS(363.55) NS(-341.86) EW(867.54)

#27 MD(6202.00) Inc(79.4) Azm(173.6) TVD(5803.88)
VS(446.09) NS(-424.11) EW(880.03)

#31 MD(6373.00) Inc(90.0) Azm(181.9) TVD(5818.94)
VS(615.97) NS(-593.95) EW(883.82)