



Bringelson Ranch #3-33-9-58

MD
2":100'

Company: Carrizo Oil & Gas, Inc.

State: CO

Well Name: Bringelson Ranch #3-33-9-58

County/Parish: Weld

UWI: 5-123-36331-00

Survey Company: PDSI

Rig Id: Xtreme 19

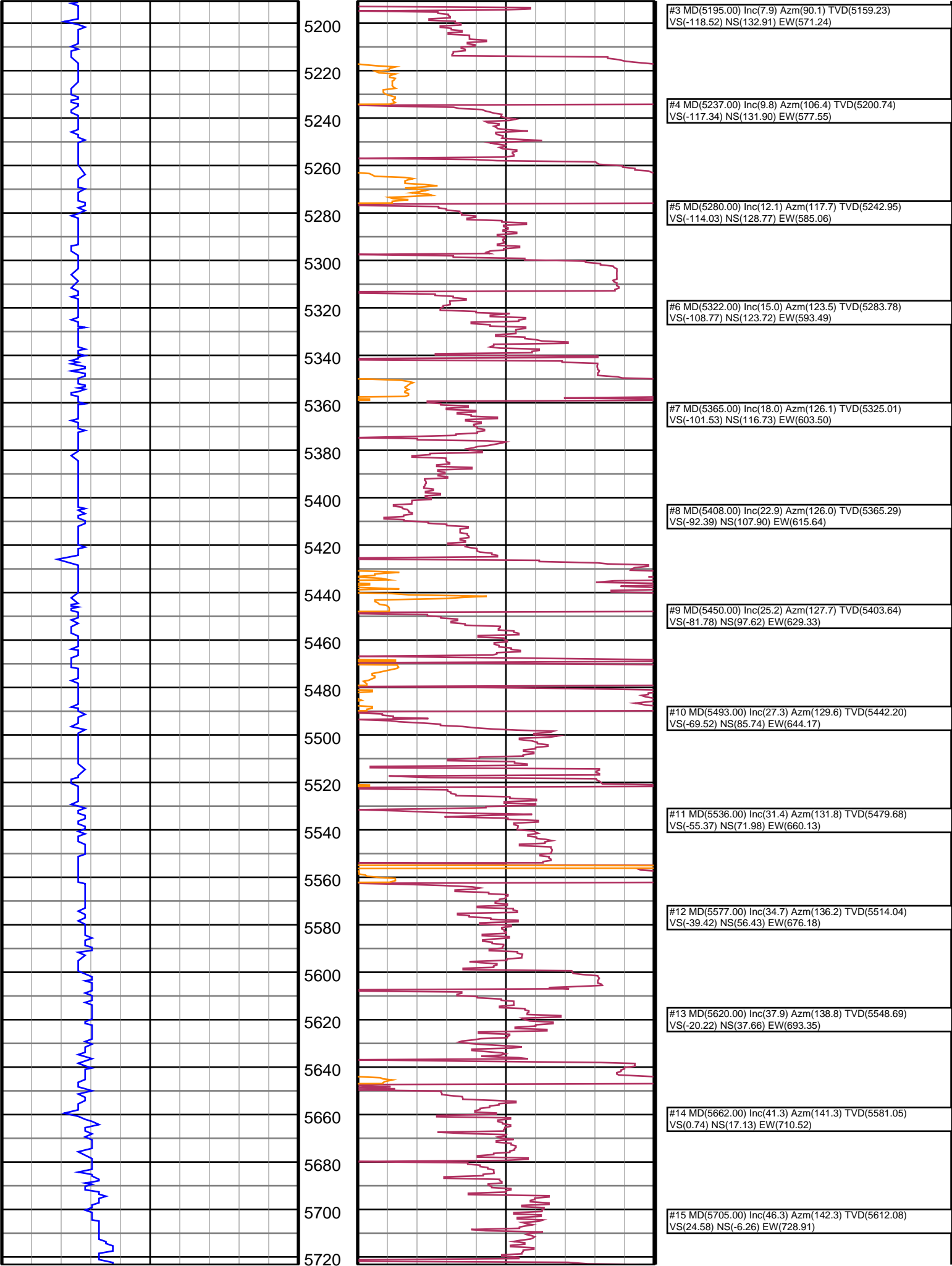
Job number: DL1536

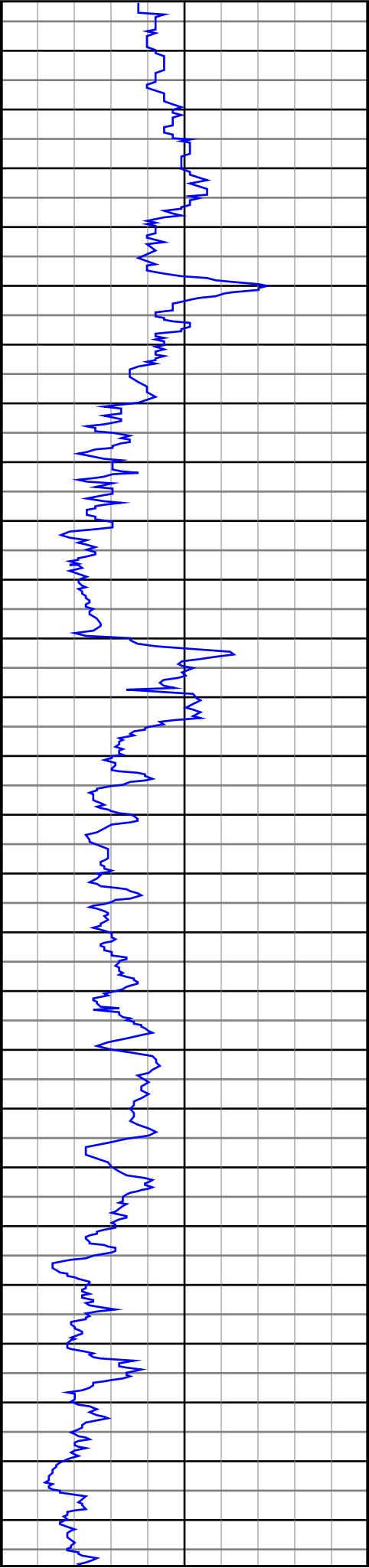
Gamma
API

0.0	_____	150.0
150.0	_____	300.0

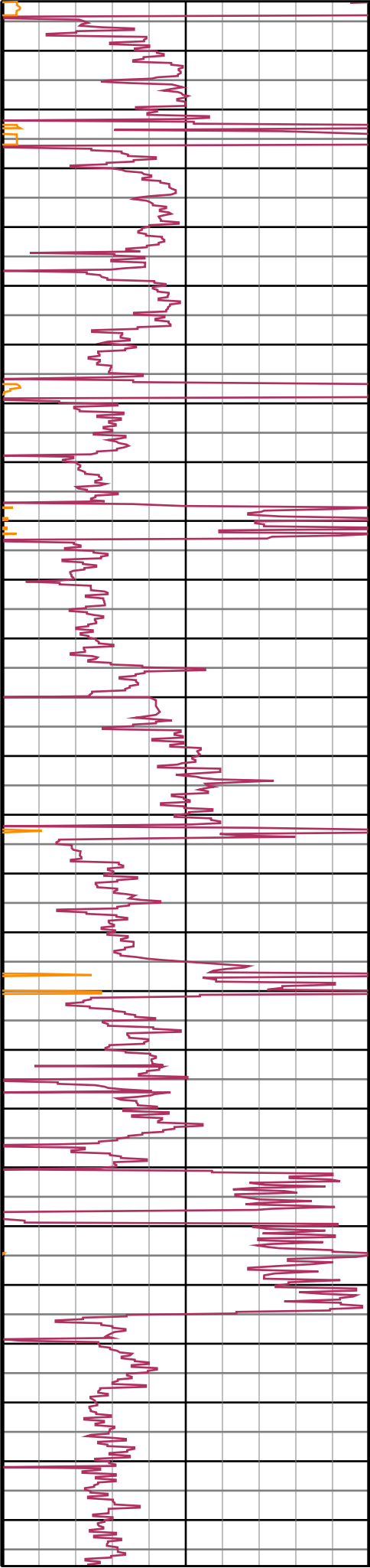
ROP
0

0.0	_____	150.0
150.0	_____	300.0

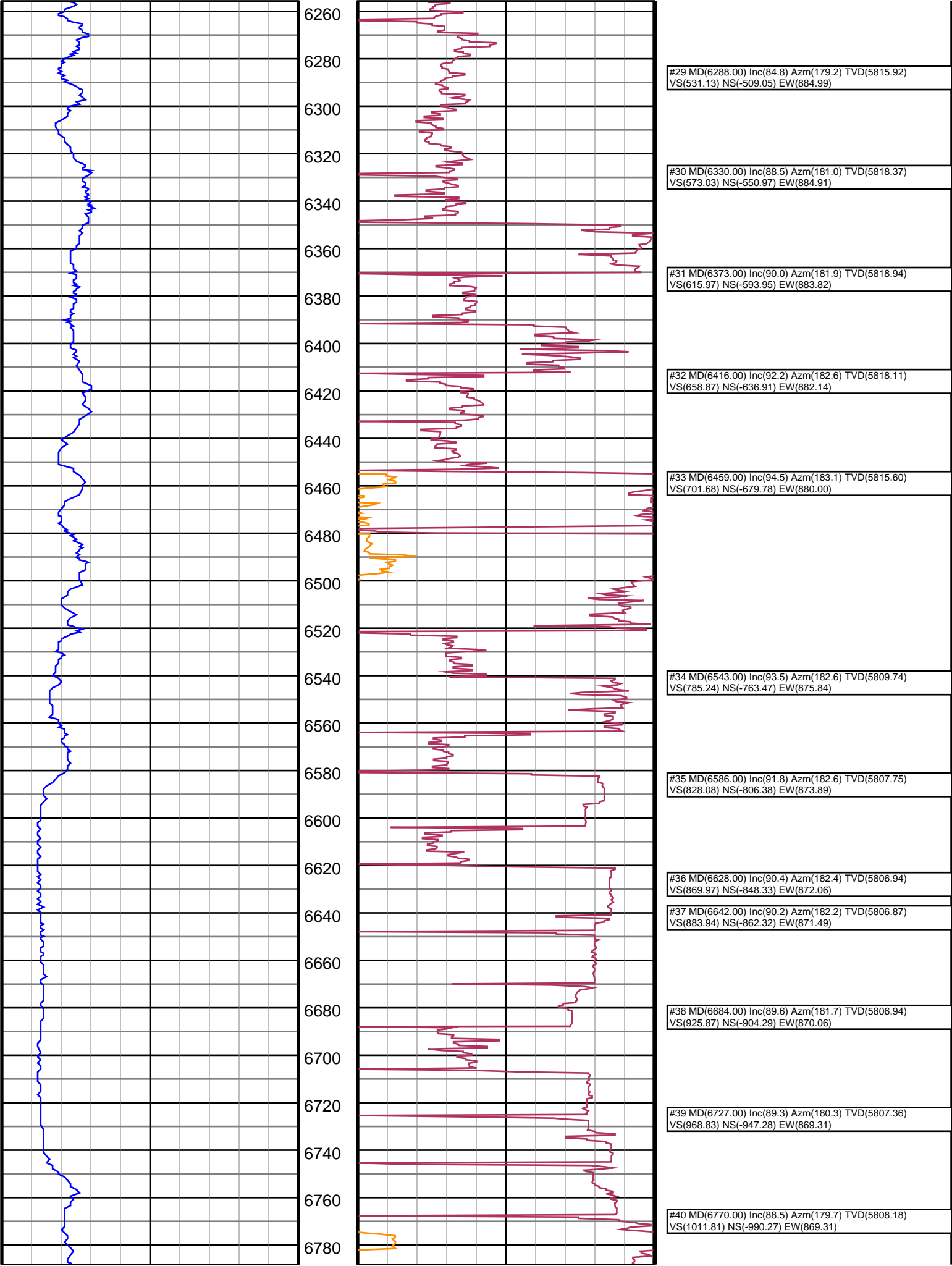


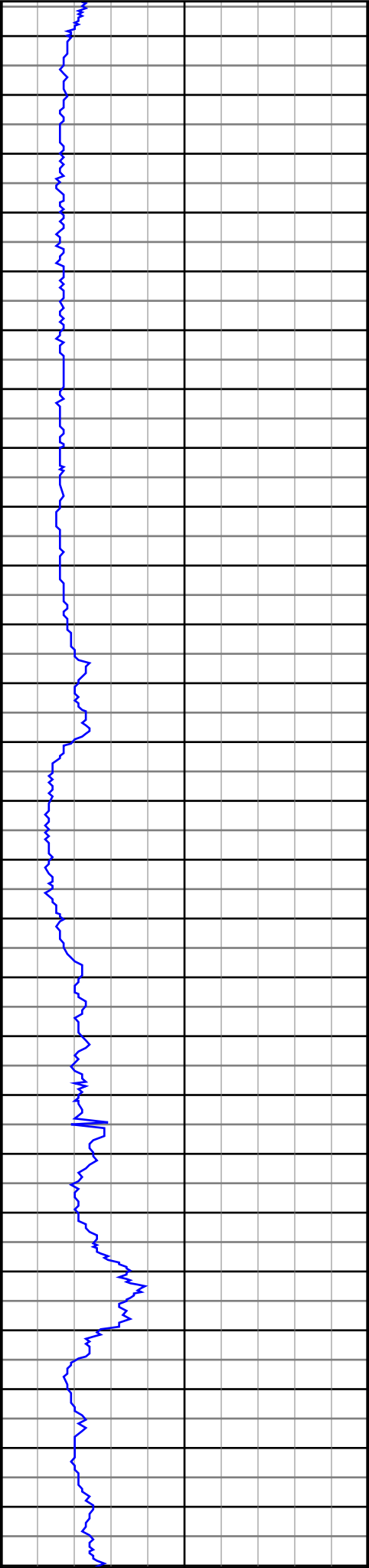


5740
5760
5780
5800
5820
5840
5860
5880
5900
5920
5940
5960
5980
6000
6020
6040
6060
6080
6100
6120
6140
6160
6180
6200
6220
6240

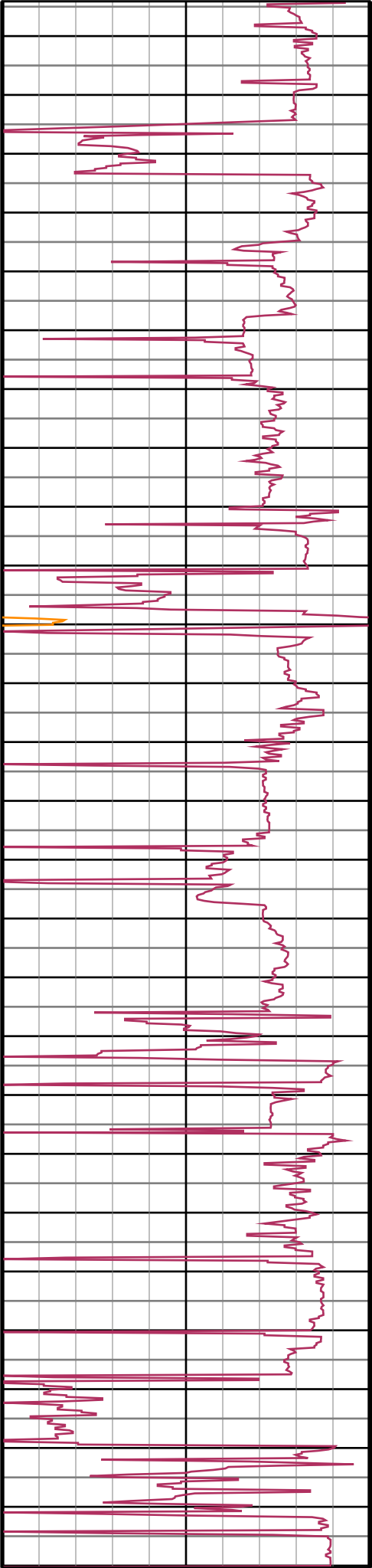


#16 MD(5747.00) Inc(50.2) Azm(144.9) TVD(5640.04) VS(50.26) NS(-31.49) EW(747.48)
#17 MD(5790.00) Inc(54.4) Azm(147.9) TVD(5666.34) VS(79.07) NS(-59.83) EW(766.28)
#18 MD(5833.00) Inc(59.1) Azm(151.4) TVD(5689.91) VS(110.54) NS(-90.86) EW(784.42)
#19 MD(5875.00) Inc(63.0) Azm(155.0) TVD(5710.24) VS(143.75) NS(-123.66) EW(800.96)
#20 MD(5899.00) Inc(64.6) Azm(156.6) TVD(5720.84) VS(163.60) NS(-143.30) EW(809.78)
#21 MD(5947.00) Inc(68.8) Azm(159.0) TVD(5739.82) VS(204.82) NS(-184.11) EW(826.42)
#22 MD(5989.00) Inc(71.8) Azm(163.0) TVD(5753.99) VS(242.51) NS(-221.49) EW(839.28)
#23 MD(6032.00) Inc(74.3) Azm(165.7) TVD(5766.52) VS(282.38) NS(-261.09) EW(850.37)
#24 MD(6075.00) Inc(76.6) Azm(168.0) TVD(5777.33) VS(323.13) NS(-301.61) EW(859.83)
#25 MD(6117.00) Inc(78.1) Azm(170.3) TVD(5786.52) VS(363.55) NS(-341.86) EW(867.54)
#26 MD(6160.00) Inc(77.7) Azm(170.8) TVD(5795.54) VS(405.19) NS(-383.33) EW(874.44)
#27 MD(6202.00) Inc(79.4) Azm(173.6) TVD(5803.88) VS(446.09) NS(-424.11) EW(880.03)
#28 MD(6245.00) Inc(81.8) Azm(176.9) TVD(5810.90) VS(488.43) NS(-466.38) EW(883.54)





6800
6820
6840
6860
6880
6900
6920
6940
6960
6980
7000
7020
7040
7060
7080
7100
7120
7140
7160
7180
7200
7220
7240
7260
7280
7300
7320



#41 MD(6812.00) Inc(89.1) Azm(179.6) TVD(5809.06)
VS(1053.79) NS(-1032.26) EW(869.57)

#42 MD(6855.00) Inc(90.1) Azm(178.9) TVD(5809.36)
VS(1096.78) NS(-1075.26) EW(870.13)

#43 MD(6897.00) Inc(90.0) Azm(178.2) TVD(5809.33)
VS(1138.78) NS(-1117.24) EW(871.20)

#44 MD(6940.00) Inc(89.6) Azm(177.1) TVD(5809.48)
VS(1181.78) NS(-1160.21) EW(872.96)

#45 MD(6982.00) Inc(90.5) Azm(176.6) TVD(5809.44)
VS(1223.76) NS(-1202.14) EW(875.27)

#46 MD(7025.00) Inc(91.3) Azm(176.4) TVD(5808.76)
VS(1266.72) NS(-1245.06) EW(877.89)

#47 MD(7068.00) Inc(91.2) Azm(176.1) TVD(5807.83)
VS(1309.68) NS(-1287.95) EW(880.70)

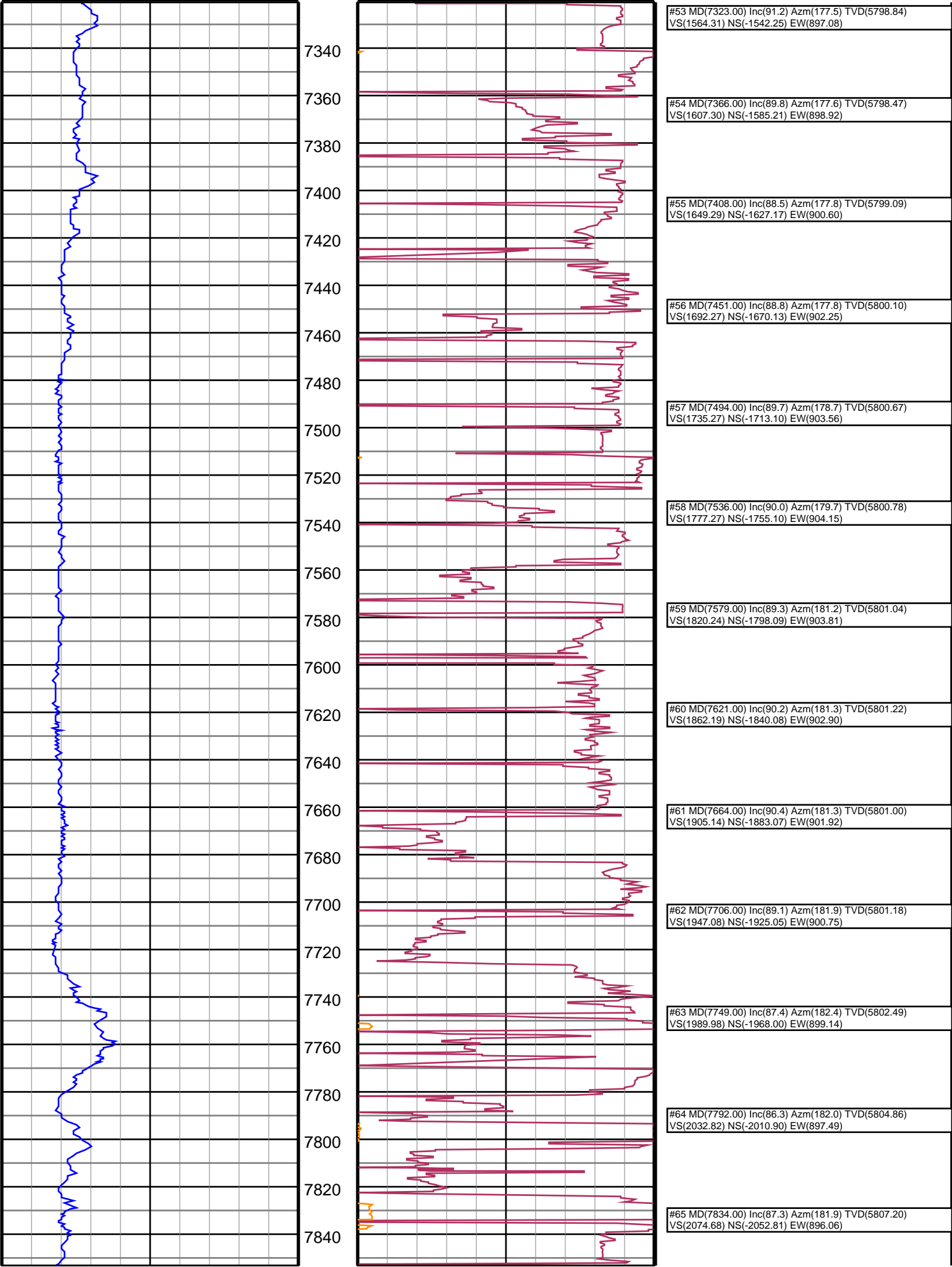
#48 MD(7110.00) Inc(91.5) Azm(175.7) TVD(5806.84)
VS(1351.62) NS(-1329.84) EW(883.71)

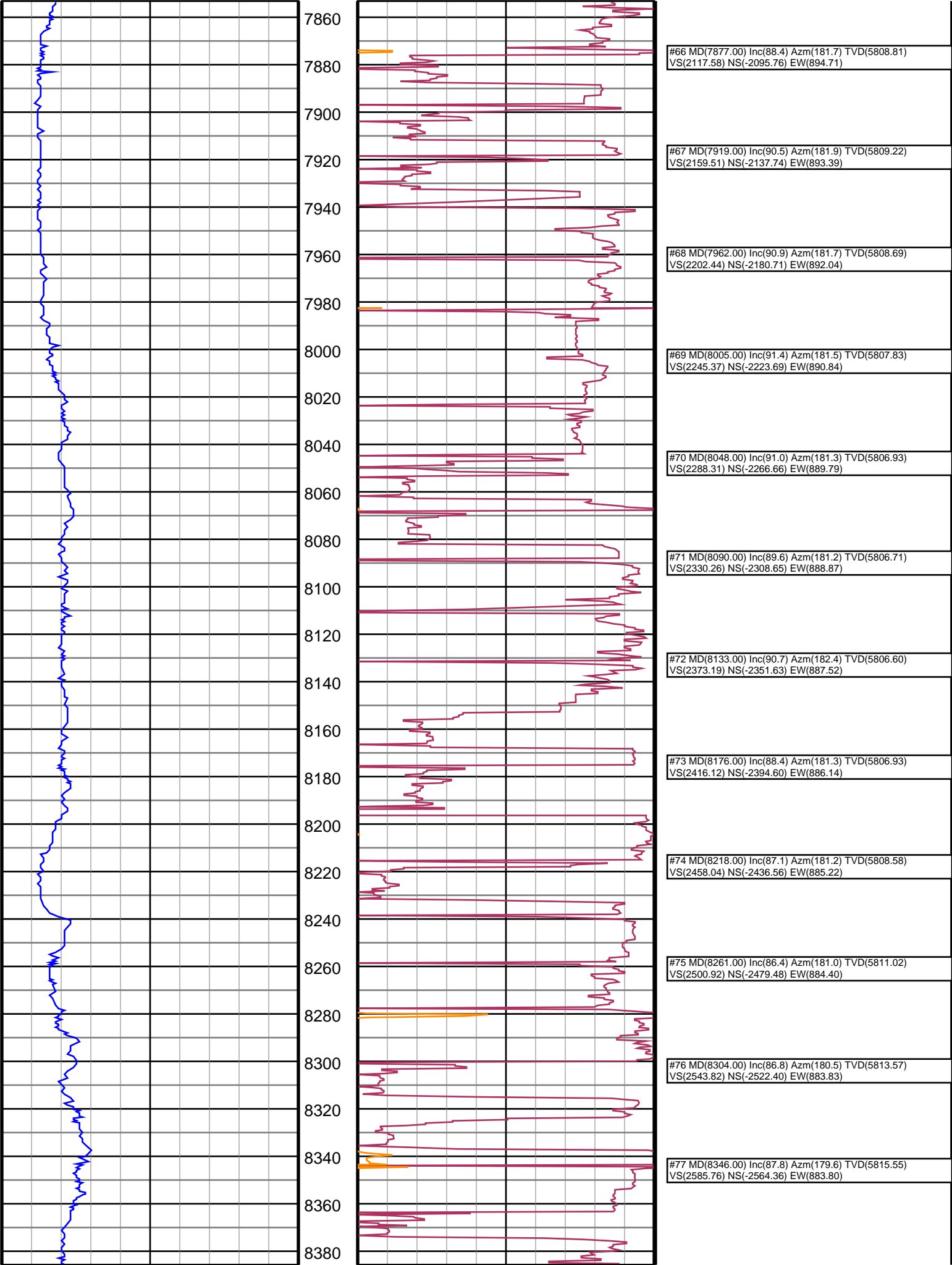
#49 MD(7153.00) Inc(92.2) Azm(176.4) TVD(5805.45)
VS(1394.56) NS(-1372.71) EW(886.67)

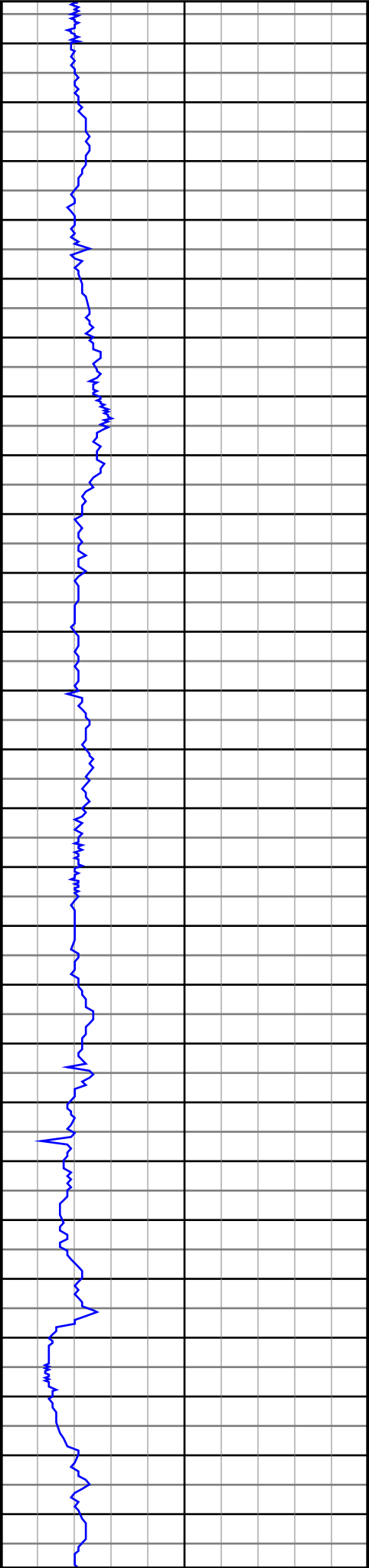
#50 MD(7196.00) Inc(92.4) Azm(176.4) TVD(5803.72)
VS(1437.49) NS(-1415.59) EW(889.36)

#51 MD(7238.00) Inc(92.7) Azm(175.7) TVD(5801.85)
VS(1479.41) NS(-1457.45) EW(892.25)

#52 MD(7281.00) Inc(92.1) Azm(176.9) TVD(5800.05)
VS(1522.34) NS(-1500.32) EW(895.03)







8400

8420

8440

8460

8480

8500

8520

8540

8560

8580

8600

8620

8640

8660

8680

8700

8720

8740

8760

8780

8800

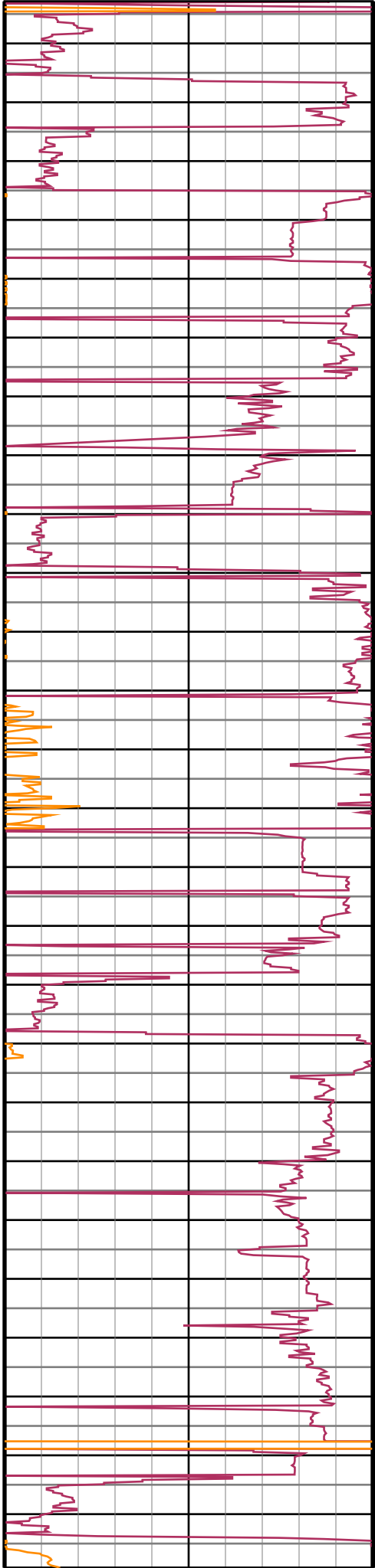
8820

8840

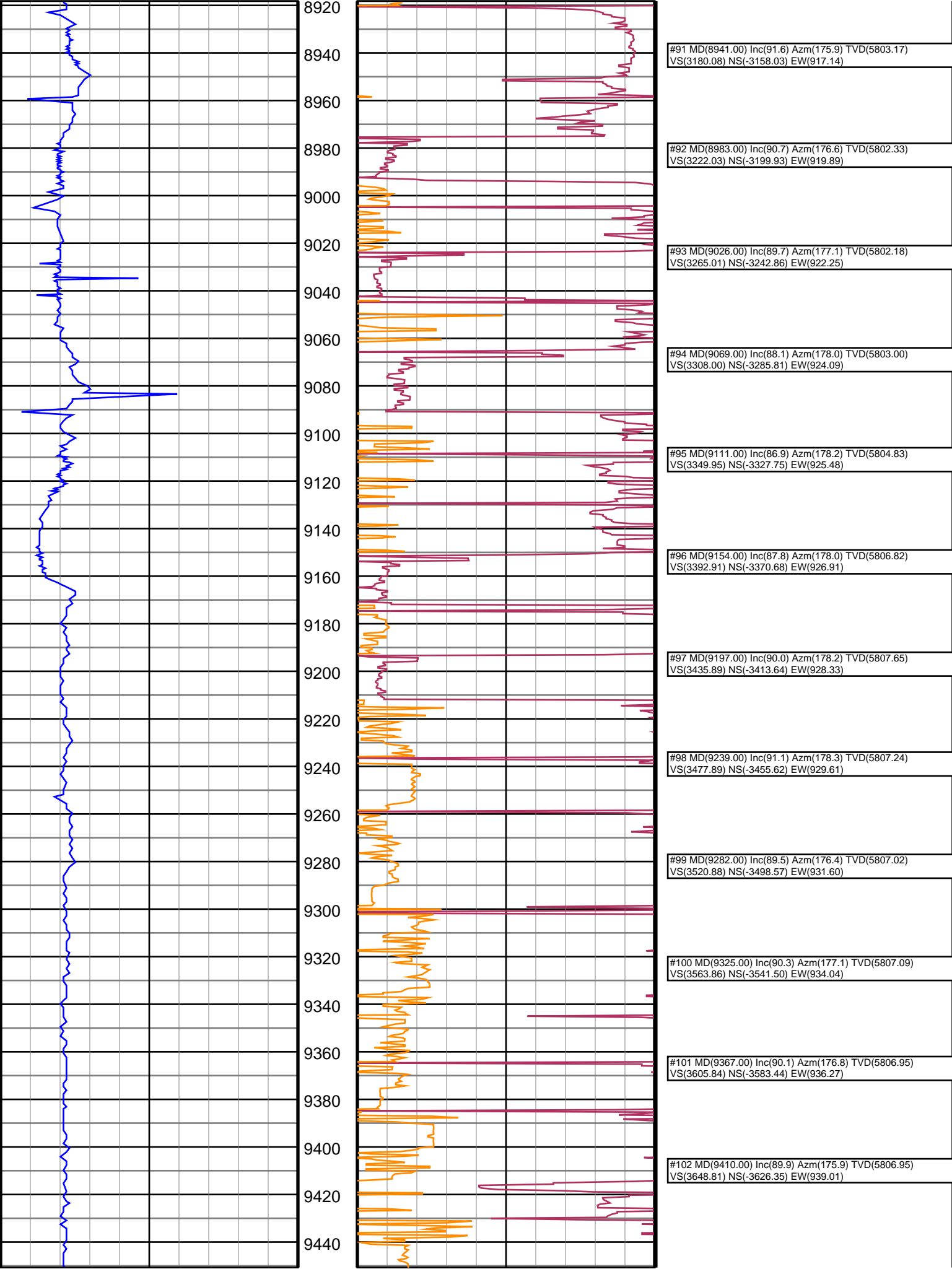
8860

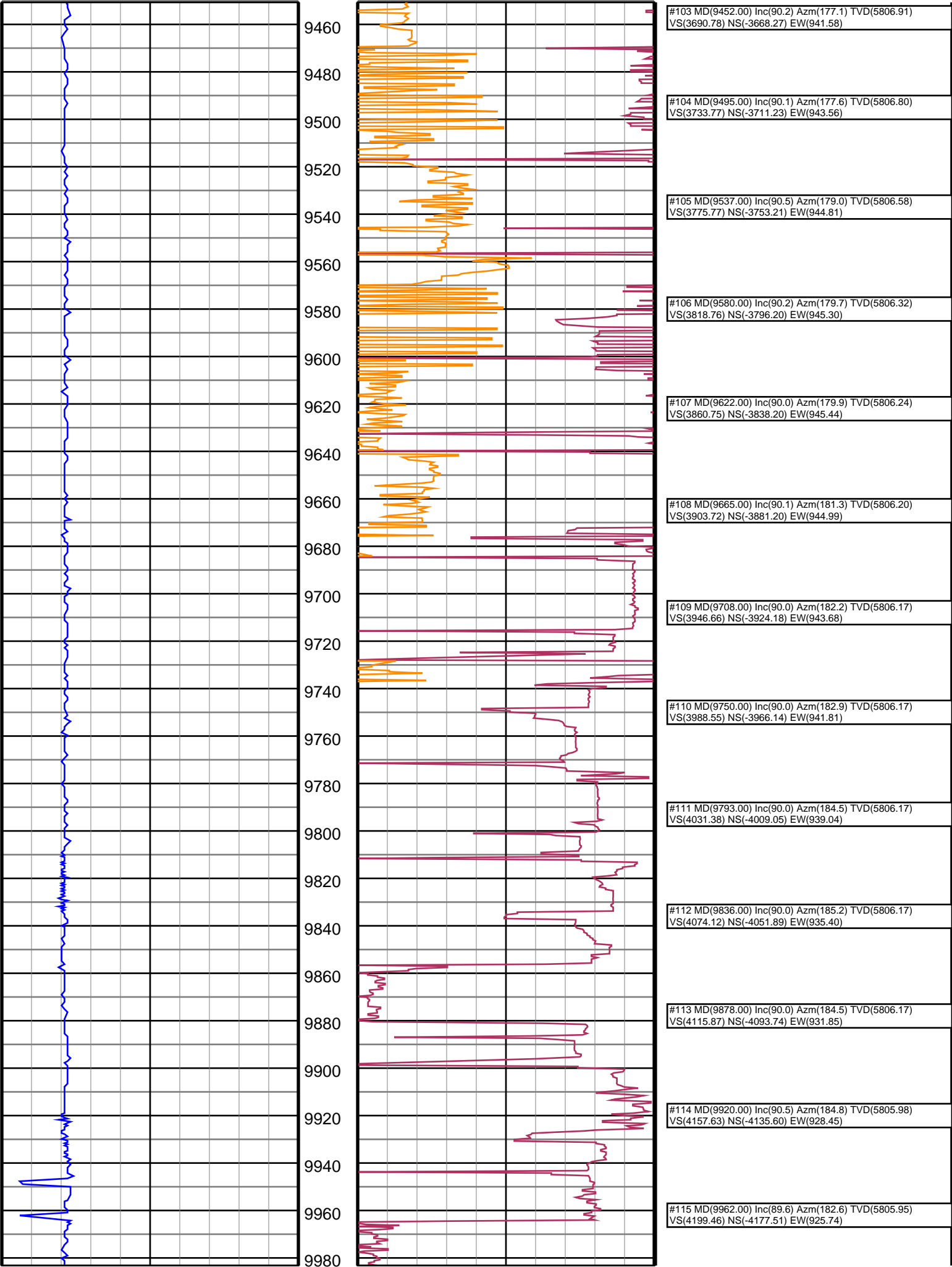
8880

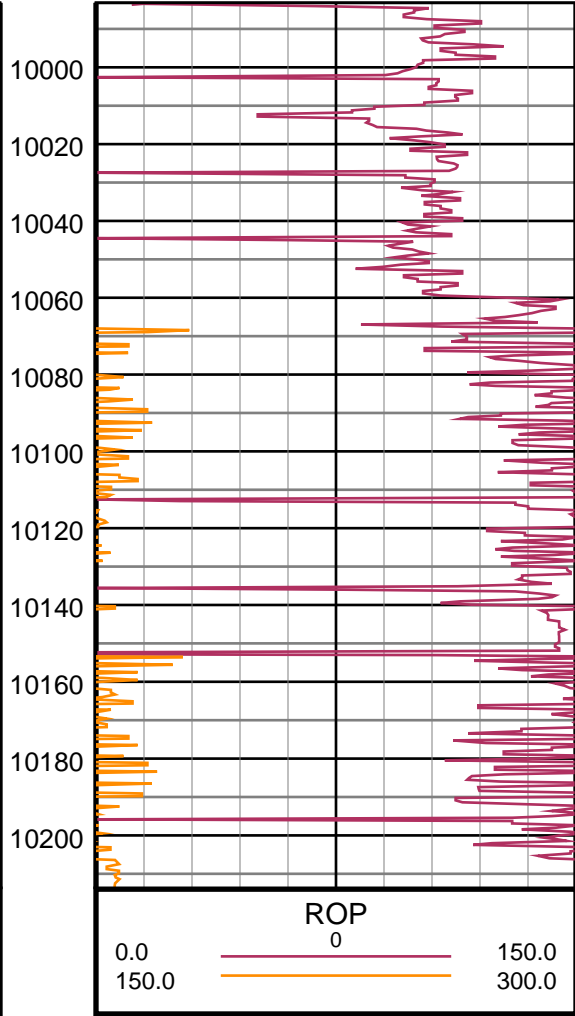
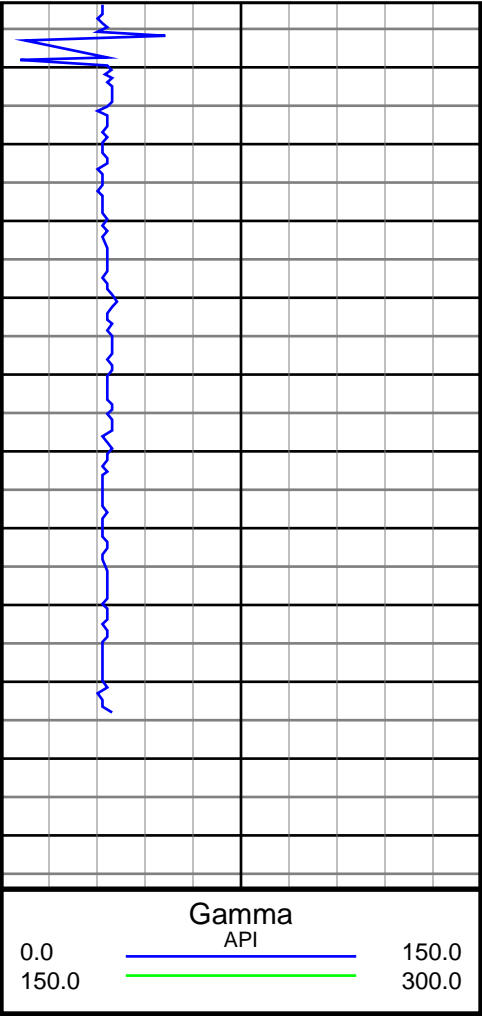
8900



#78 MD(8389.00) Inc(89.0) Azm(179.0) TVD(5816.75) VS(2628.73) NS(-2607.33) EW(884.32)
#79 MD(8432.00) Inc(91.0) Azm(178.2) TVD(5816.75) VS(2671.73) NS(-2650.32) EW(885.37)
#80 MD(8474.00) Inc(91.8) Azm(177.8) TVD(5815.72) VS(2713.72) NS(-2692.28) EW(886.84)
#81 MD(8517.00) Inc(92.0) Azm(177.1) TVD(5814.30) VS(2756.68) NS(-2735.21) EW(888.75)
#82 MD(8559.00) Inc(90.9) Azm(176.9) TVD(5813.24) VS(2798.65) NS(-2777.14) EW(890.95)
#83 MD(8602.00) Inc(90.7) Azm(177.5) TVD(5812.63) VS(2841.64) NS(-2820.09) EW(893.05)
#84 MD(8644.00) Inc(90.0) Azm(176.6) TVD(5812.38) VS(2883.62) NS(-2862.03) EW(895.21)
#85 MD(8686.00) Inc(90.1) Azm(175.9) TVD(5812.34) VS(2925.59) NS(-2903.94) EW(897.96)
#86 MD(8728.00) Inc(91.8) Azm(176.4) TVD(5811.65) VS(2967.54) NS(-2945.84) EW(900.78)
#87 MD(8770.00) Inc(92.2) Azm(175.9) TVD(5810.18) VS(3009.48) NS(-2987.72) EW(903.59)
#88 MD(8813.00) Inc(92.7) Azm(175.4) TVD(5808.34) VS(3052.39) NS(-3030.55) EW(906.85)
#89 MD(8856.00) Inc(92.9) Azm(174.6) TVD(5806.24) VS(3095.25) NS(-3073.34) EW(910.60)
#90 MD(8898.00) Inc(91.9) Azm(175.9) TVD(5804.48) VS(3137.14) NS(-3115.16) EW(914.07)







#116 MD(10005.00) Inc(90.1) Azm(182.0) TVD(5806.06)
VS(4242.37) NS(-4220.48) EW(924.01)

#117 MD(10047.00) Inc(90.5) Azm(182.0) TVD(5805.84)
VS(4284.29) NS(-4262.45) EW(922.54)

#118 MD(10090.00) Inc(89.8) Azm(179.6) TVD(5805.73)
VS(4327.25) NS(-4305.44) EW(921.94)

#119 MD(10132.00) Inc(90.1) Azm(180.5) TVD(5805.76)
VS(4369.24) NS(-4347.44) EW(921.91)

#120 MD(10152.00) Inc(90.3) Azm(180.5) TVD(5805.69)
VS(4389.23) NS(-4367.44) EW(921.73)

#121 MD(10213.90) Inc(90.3) Azm(180.5) TVD(5805.37)
VS(4451.09) NS(-4429.34) EW(921.19)