



Bringelson Ranch #2-33-9-58

TVD
5":100'

Company: Carrizo Oil & Gas, Inc.

State: CO

Well Name: Bringelson Ranch #2-33-9-58

County/Parish: Weld

UWI: 05-123-36332

Survey Company: PDSI

Rig Id: Xtreme 19

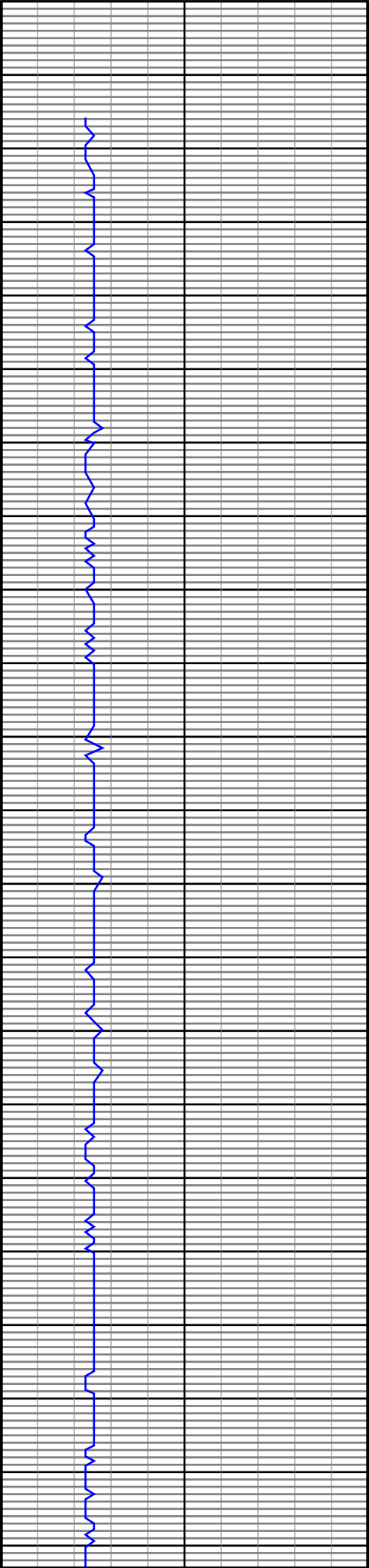
Job number: DL1505

Gamma
API

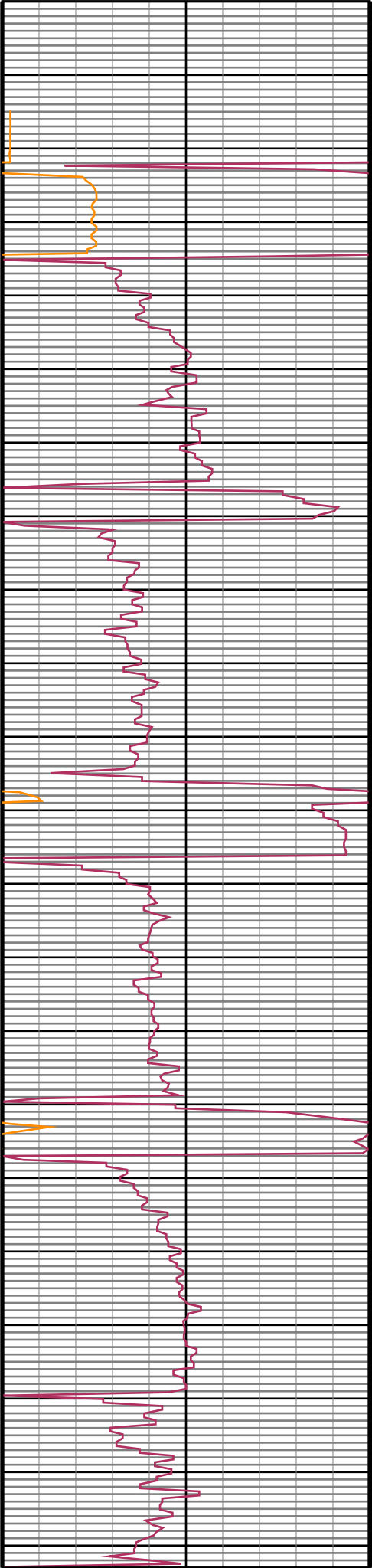
0.0	_____	150.0
150.0	_____	300.0

ROP
0

0.0	_____	150.0
150.0	_____	300.0



5190
5200
5210
5220
5230
5240
5250
5260
5270
5280
5290
5300
5310
5320
5330
5340
5350
5360
5370
5380
5390

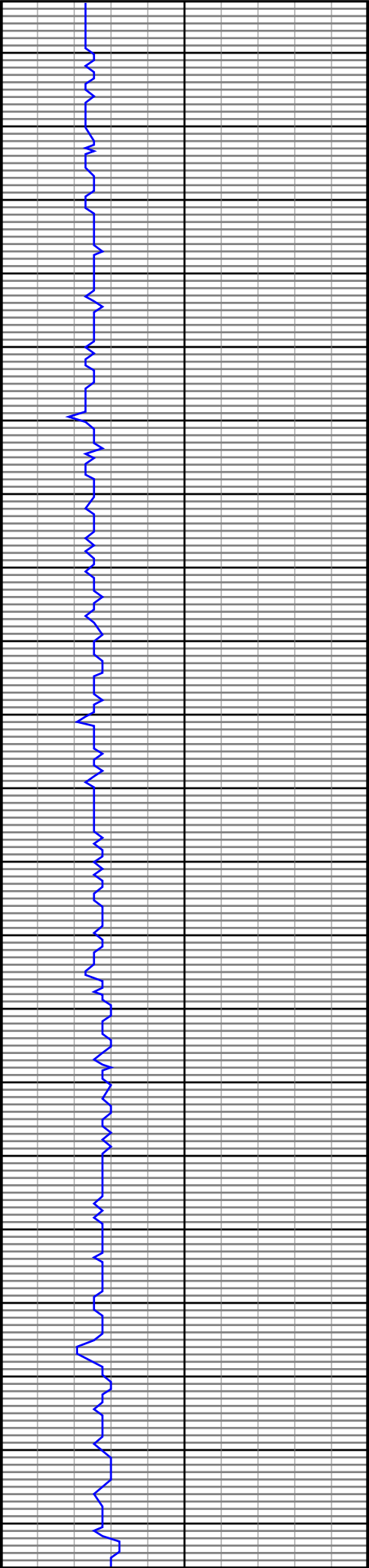


#3 MD(5233.00) Inc(2.5) Azm(121.4) TVD(5227.39)
VS(-136.92) NS(141.33) EW(173.60)

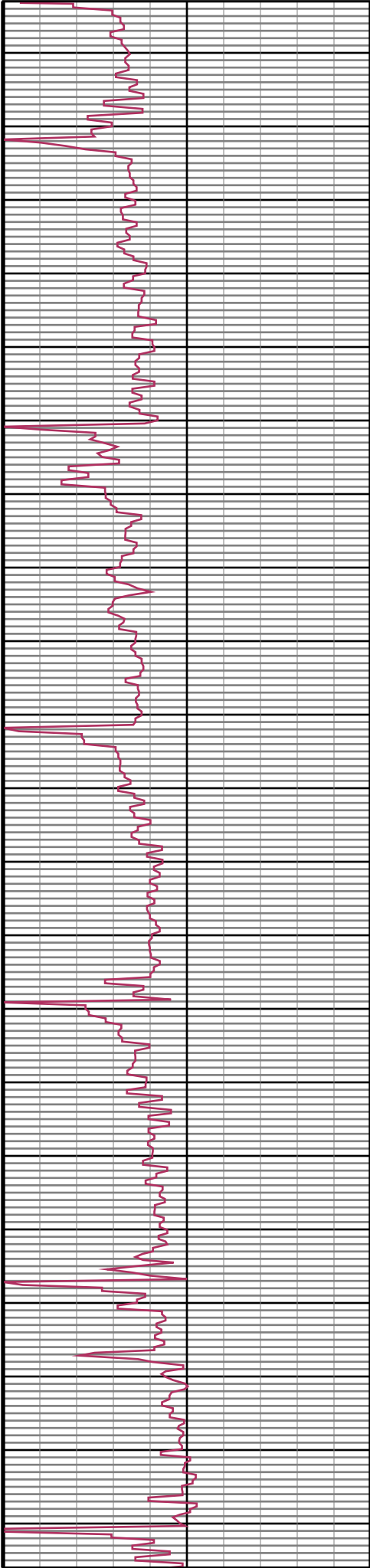
#4 MD(5275.00) Inc(5.4) Azm(155.5) TVD(5269.29)
VS(-134.61) NS(139.05) EW(175.20)

#5 MD(5318.00) Inc(8.7) Azm(151.8) TVD(5311.96)
VS(-129.84) NS(134.34) EW(177.58)

#6 MD(5361.00) Inc(12.6) Azm(153.4) TVD(5354.21)
VS(-122.69) NS(127.28) EW(181.21)



5400
5410
5420
5430
5440
5450
5460
5470
5480
5490
5500
5510
5520
5530
5540
5550
5560
5570
5580
5590
5600



#7 MD(5403.00) Inc(15.9) Azm(158.4) TVD(5394.91)
VS(-113.14) NS(117.83) EW(185.38)

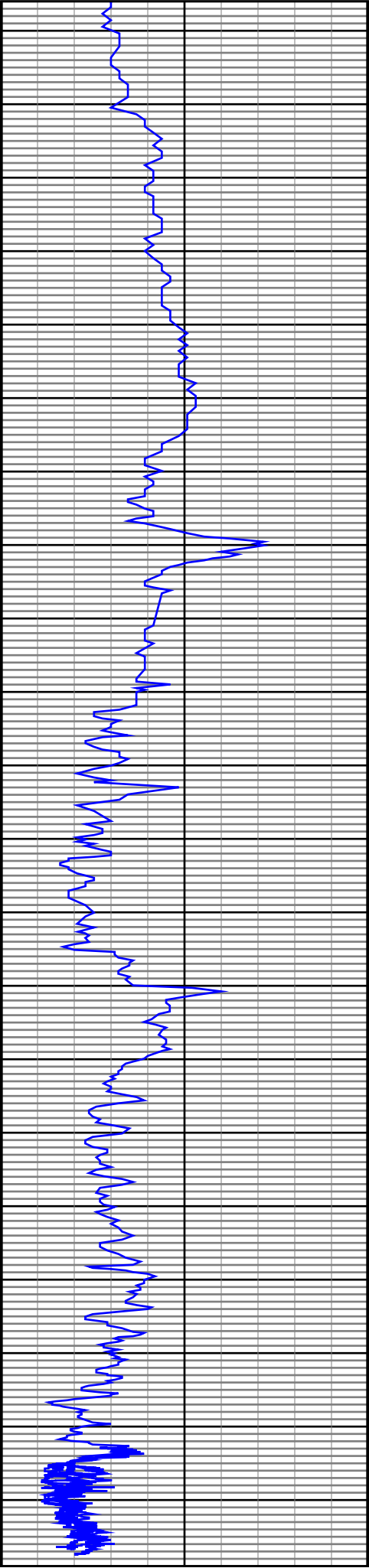
#8 MD(5446.00) Inc(17.9) Azm(170.1) TVD(5436.06)
VS(-101.07) NS(105.84) EW(188.69)

#9 MD(5488.00) Inc(21.4) Azm(174.2) TVD(5475.61)
VS(-87.04) NS(91.86) EW(190.57)

#10 MD(5531.00) Inc(25.6) Azm(173.8) TVD(5515.04)
VS(-69.95) NS(74.81) EW(192.37)

#11 MD(5574.00) Inc(30.2) Azm(174.7) TVD(5553.03)
VS(-49.89) NS(54.79) EW(194.38)

#12 MD(5616.00) Inc(35.5) Azm(175.6) TVD(5588.30)
VS(-27.16) NS(32.10) EW(196.29)



5610

5620

5630

5640

5650

5660

5670

5680

5690

5700

5710

5720

5730

5740

5750

5760

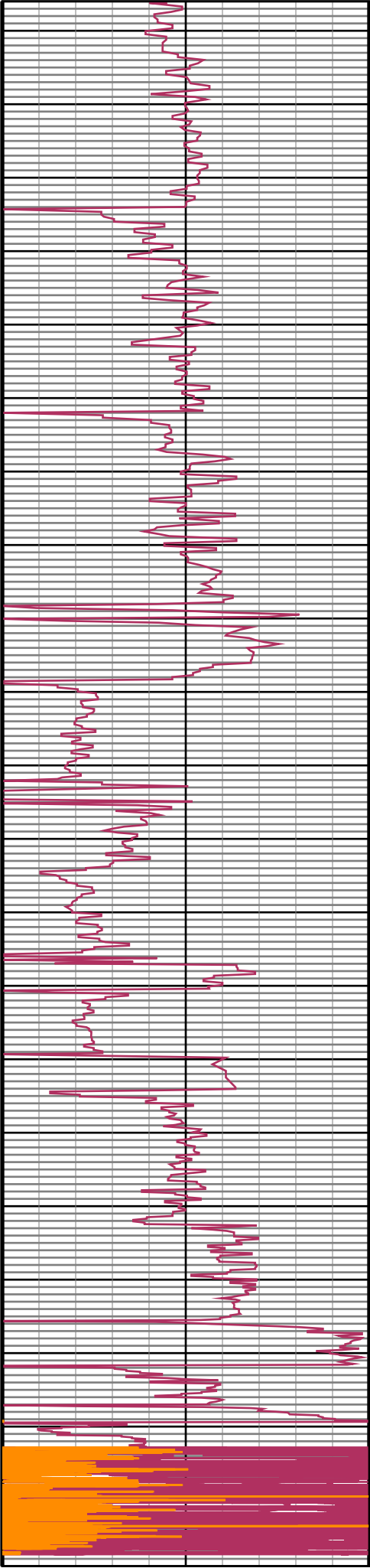
5770

5780

5790

5800

5810



#13 MD(5659.00) Inc(41.1) Azm(176.5) TVD(5622.03) VS(-0.54) NS(5.52) EW(198.11)
#14 MD(5701.00) Inc(47.1) Azm(176.1) TVD(5652.18) VS(28.65) NS(-23.63) EW(200.00)
#15 MD(5744.00) Inc(53.2) Azm(176.6) TVD(5679.72) VS(61.62) NS(-56.56) EW(202.09)
#16 MD(5787.00) Inc(56.4) Azm(177.0) TVD(5704.51) VS(96.74) NS(-91.64) EW(204.05)
#17 MD(5814.00) Inc(57.9) Azm(177.5) TVD(5719.15) VS(119.41) NS(-114.29) EW(205.14)
#18 MD(5868.00) Inc(62.2) Azm(177.9) TVD(5746.10) VS(166.19) NS(-161.03) EW(207.01)
#19 MD(5910.00) Inc(66.7) Azm(178.7) TVD(5764.21) VS(204.07) NS(-198.90) EW(208.13)
#20 MD(5953.00) Inc(71.5) Azm(180.1) TVD(5779.55) VS(244.22) NS(-239.06) EW(208.55)
#21 MD(5996.00) Inc(73.6) Azm(180.9) TVD(5792.44) VS(285.22) NS(-280.07) EW(208.19)
#54 MD(7401.00) Inc(89.9) Azm(179.3) TVD(5804.93) VS(1687.06) NS(-1681.23) EW(252.90)
#115 MD(9994.00) Inc(89.0) Azm(181.0) TVD(5809.00) VS(4278.75) NS(-4273.12) EW(277.82)
#119 MD(10153.00) Inc(88.3) Azm(180.9) TVD(5813.28) VS(4437.57) NS(-4432.04) EW(275.78)

Gamma
API

0.0

150.0

150.0

300.0

ROP
0

0.0

150.0

150.0

300.0