

LEGEND:

 PROPOSED LOCATION



EE3 LLC.

**HEBRON CENTRAL FACILITY
OFF-SITE TANK PAD**
 SECTION 7, T7N, R80W, 6th P.M.
 SW 1/4 NE 1/4



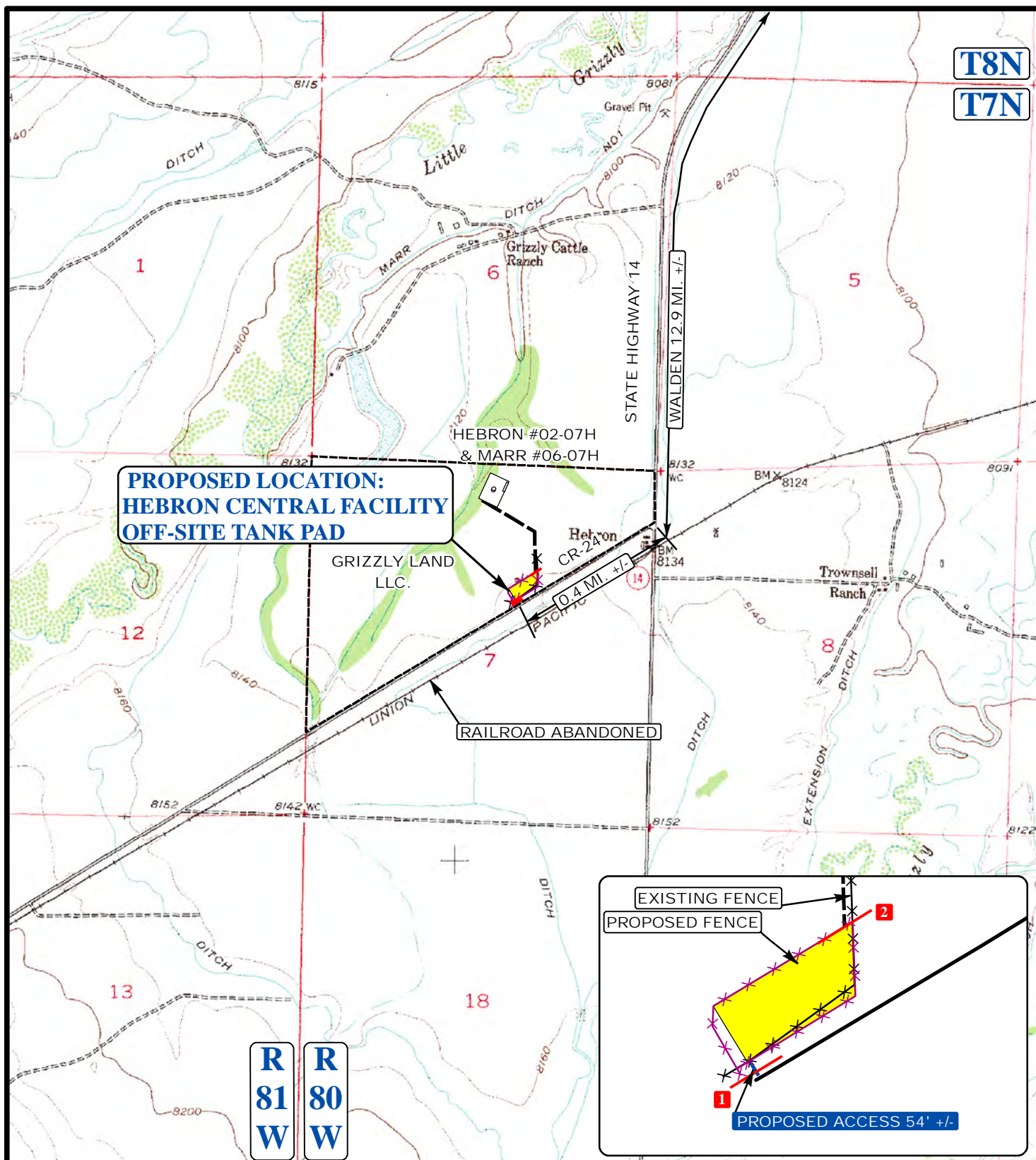
Uintah Engineering & Land Surveying
 85 South 200 East Vernal, Utah 84078
 (435) 789-1017 * FAX (435) 789-1813

**ACCESS ROAD
MAP**

05 14 13
 MONTH DAY YEAR

SCALE: 1:100,000 DRAWN BY: J.L.H. REVISED: 06-14-13





LEGEND:

- EXISTING ROADS
- PROPOSED ACCESS ROAD
- 1 18' CMP REQUIRED
- 2 INSTALL CATTLE GAURD



Utah Engineering & Land Surveying
 85 South 200 East Vernal, Utah 84078
 (435) 789-1017 * FAX (435) 789-1813



EE3 LLC.

**HEBRON CENTRAL FACILITY
 OFF-SITE TANK PAD
 SECTION 7, T7N, R80W, 6th P.M.
 SW 1/4 NE 1/4**

**ACCESS ROAD
 MAP**

05 14 13
 MONTH DAY YEAR

SCALE: 1"=2000' DRAWN BY: J.L.H. REVISED: 06-14-13

**B
 TOPO**