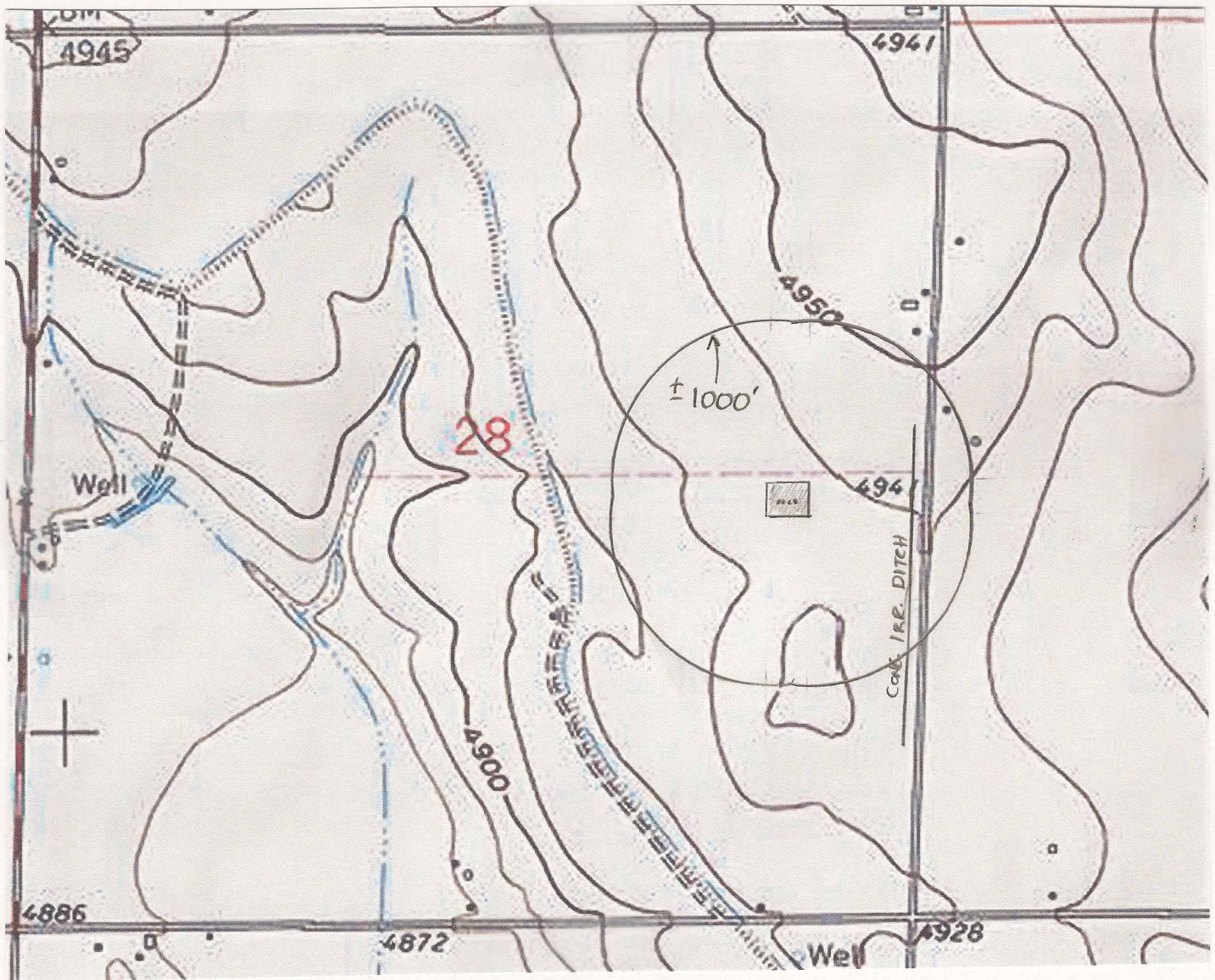


HYDROLOGY / TOPOGRAPHY MAP

E1/2 SEC. 28 T7N R66W, 6TH P.M.



APPROX. SCALE
1" = 1000'

(DISTANCES FROM THE 28W-103 LOCATION)

A CONCRETE IRRIGATION DITCH IS 762' E.

NO OTHER VISIBLE WATER FEATURES WITHIN 1000' OF DISTURBANCES.

PREPARED BY:

HORSESHOE SURVEYING, LLC
PO BOX 150458
LAKEWOOD, CO 80215
(720)872-0196

DRAWING DATE:

5-4-13

FIELD DATE:

4-26-13

BY:

TGC

THORNTON 28SW-HZ Pad

28W-103, 28W-443, 28S-223, 28S-403,

LOCATION:

WELD COUNTY, CO

E1/2, SEC. 28, T7N, R66W, 6TH P.M.