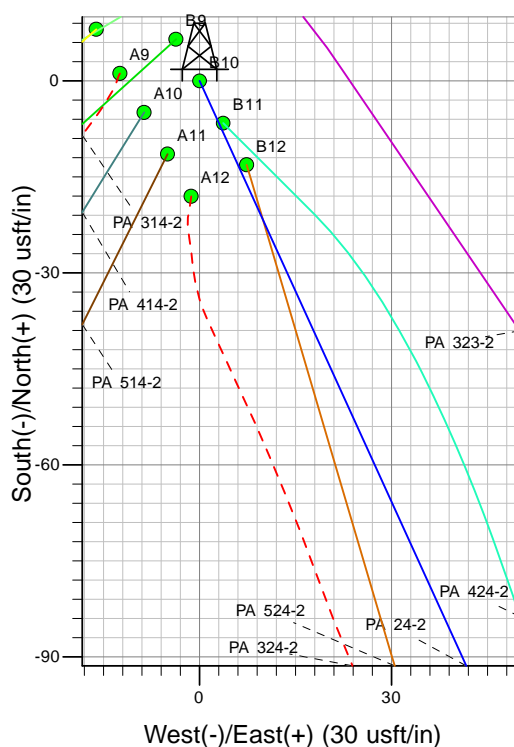
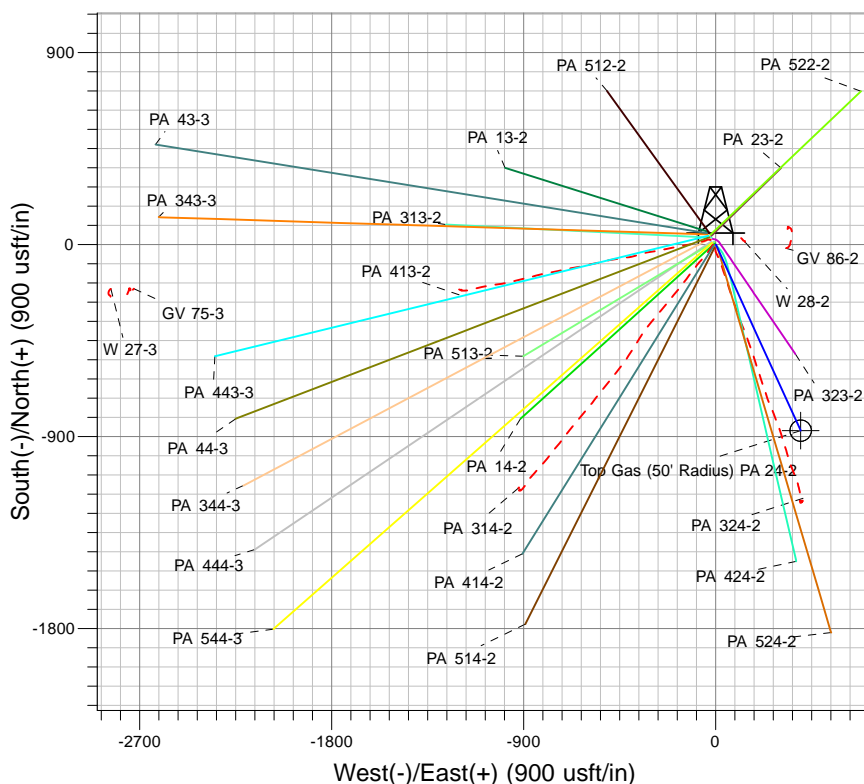
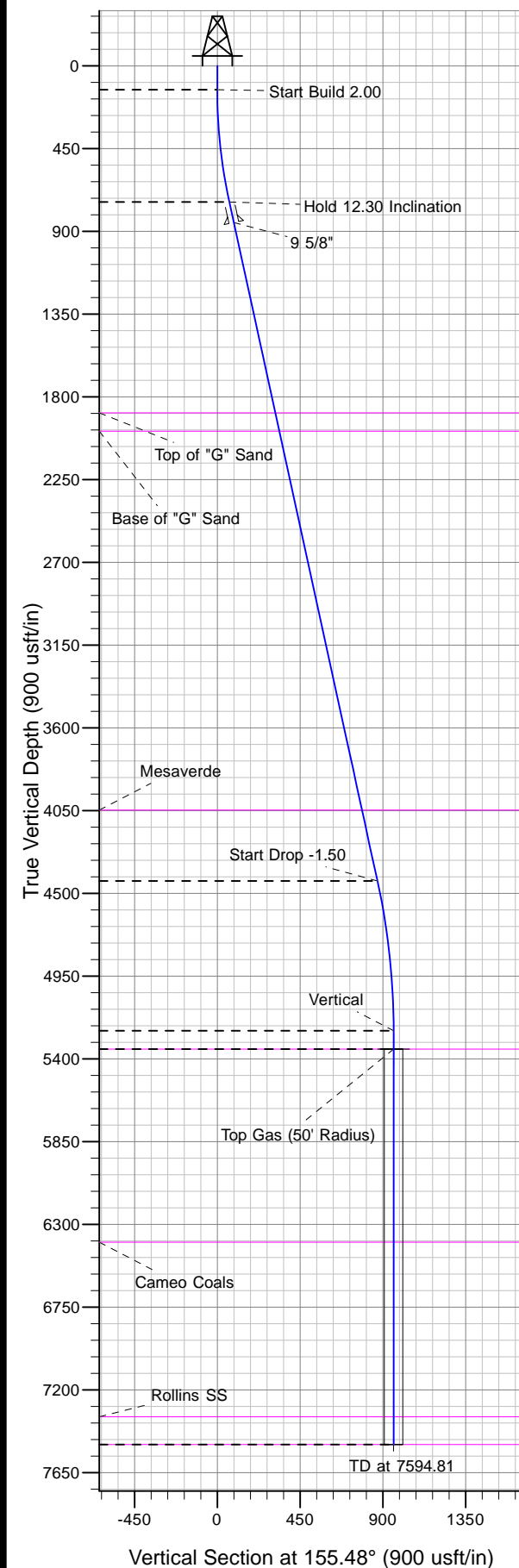




Well Name: PA 24-2
Surface Location: GV 86-2 Pad
North American Datum 1983 , US State Plane 1983, Colorado Central Zone
Ground Elevation: 5821.00

+N/-S	+E/-W	Northing	Easting	Latitude	Longitude	Slot
0.00	0.00	1603733.70	2302954.90	39.46501	-107.96925	B10

KELLY BUSHING @ 5847.00usft (Nabors 577 (26' RKB) kjs)



Project: PA 02-07S-095W
Site: GV 86-2 Pad
Well: PA 24-2
Plan #2 12Feb13 kjs



Azimuths to True North
Magnetic North: 10.78°
Magnetic Field
Strength: 52624.2snT
Dip Angle: 65.82°
Date: 10/31/2007
Model: IGRF2005-10

ANNOTATIONS

MD	Inc	Azi	TVD	+N/-S	+E/-W	Vsect	Departure	Annotation
130.00	0.00	0.00	130.00	0.00	0.00	0.00	0.00	Start Build 2.00
745.17	12.30	155.48	740.45	-59.86	27.30	65.80	65.80	Hold 12.30 Inclination
4524.58	12.30	155.48	4433.06	-792.61	361.47	871.14	871.14	Start Drop -1.50
5344.81	0.00	0.00	5247.00	-872.43	397.87	958.87	958.87	Vertical
5444.81	0.00	0.00	5347.00	-872.43	397.87	958.87	958.87	Top Gas
7594.81	0.00	0.00	7497.00	-872.43	397.87	958.87	958.87	TD at 7594.81