

*The Road to Excellence Starts with Safety*

Sold To #: 300721	Ship To #: 2986866	Quote #:	Sales Order #: 900238756
Customer: WPX ENERGY ROCKY MOUNTAIN LLC-EBUS		Customer Rep: Hartl, Al	
Well Name: RWF	Well #: 43-36	API/UWI #:	
Field: RULISON	City (SAP): RIFLE	County/Parish: Garfield	State: Colorado
Lat: N 39.482 deg. OR N 39 deg. 28 min. 56.644 secs.		Long: W 107.836 deg. OR W -108 deg. 9 min. 50.85 secs.	
Contractor: NABORS 576	Rig/Platform Name/Num: NABORS 576		
Job Purpose: Cement Surface Casing			
Well Type: Development Well		Job Type: Cement Surface Casing	
Sales Person: MAYO, MARK		Srvc Supervisor: KUKUS, CHRISTOPHER	MBU ID Emp #: 413952

**Job Personnel**

HES Emp Name	Exp Hrs	Emp #	HES Emp Name	Exp Hrs	Emp #	HES Emp Name	Exp Hrs	Emp #
GOWEN, WESLEY M	5	496205	KUKUS, CHRISTOPHER A	5	413952	ROSE, BENJAMIN Keith	3	487022

**Equipment**

HES Unit #	Distance-1 way	HES Unit #	Distance-1 way	HES Unit #	Distance-1 way	HES Unit #	Distance-1 way
10025118	60 mile	10296152C	60 mile	11360881	60 mile	11583931	60 mile
11808849	60 mile						

**Job Hours**

Date	On Location Hours	Operating Hours	Date	On Location Hours	Operating Hours	Date	On Location Hours	Operating Hours
03/15/2013	5	2						

**TOTAL** Total is the sum of each column separately

Job				Job Times			
Formation Name	Formation Depth (MD)	Top	Bottom	Called Out	Date	Time	Time Zone
Form Type			BHST	On Location	15 - Mar - 2013	05:30	MST
Job depth MD	1140. ft		Job Depth TVD	Job Started	15 - Mar - 2013	08:08	MST
Water Depth			Wk Ht Above Floor	Job Completed	15 - Mar - 2013	09:00	MST
Perforation Depth (MD)	From		To	Departed Loc	15 - Mar - 2013	10:30	MST

**Well Data**

Description	New / Used	Max pressure psig	Size in	ID in	Weight lbm/ft	Thread	Grade	Top MD ft	Bottom MD ft	Top TVD ft	Bottom TVD ft
OPEN HOLE				13.5					1140.		
SURFACE CASING	New		9.625	9.001	32.3		I-80		1122.3		

**Sales/Rental/3<sup>rd</sup> Party (HES)**

Description	Qty	Qty uom	Depth	Supplier
PLUG,CMTG, TOP, 9 5/8, HWE, 8.16 MIN/9.06 MA	1	EA		

**Tools and Accessories**

Type	Size	Qty	Make	Depth	Type	Size	Qty	Make	Depth	Type	Size	Qty	Make
Guide Shoe					Packer					Top Plug	9 5/8	1	HES
Float Shoe	9 5/8	1		1122.28	Bridge Plug					Bottom Plug			
Float Collar	9 5/8	1		1078.41	Retainer					SSR plug set			
Insert Float										Plug Container	9 5/8	1	HES
Stage Tool										Centralizers			

**Miscellaneous Materials**

Gelling Agt	Conc	Surfactant	Conc	Acid Type	Qty	Conc %
Treatment Fld	Conc	Inhibitor	Conc	Sand Type	Size	Qty

**Fluid Data**

Stage/Plug #: 1
-----------------

Fluid #	Stage Type	Fluid Name	Qty	Qty uom	Mixing Density lbm/gal	Yield ft <sup>3</sup> /sk	Mix Fluid Gal/sk	Rate bbl/min	Total Mix Fluid Gal/sk
1	Water Spacer		20.00	bbl	8.33	.0	.0	4	
2	Lead Cement	VERSACEM (TM) SYSTEM (452010)	160.0	sacks	12.3	2.38	13.75	7	13.75
		13.75 Gal FRESH WATER							
3	Tail Cement	VERSACEM (TM) SYSTEM (452010)	160.0	sacks	12.8	2.11	11.75	7	11.75
4	Displacement		84.90	bbl	8.33	.0	.0	10	
Calculated Values		Pressures		Volumes					
Displacement	84.9	Shut In: Instant		Lost Returns	0	Cement Slurry	127.9	Pad	
Top Of Cement	SURFACE	5 Min		Cement Returns	24	Actual Displacement	84.9	Treatment	
Frac Gradient		15 Min		Spacers	20	Load and Breakdown		Total Job	232.8
Rates									
Circulating		Mixing	7	Displacement	10	Avg. Job			7
Cement Left In Pipe	Amount	43.8 ft	Reason	Shoe Joint					
Frac Ring # 1 @	ID	Frac ring # 2 @	ID	Frac Ring # 3 @	ID	Frac Ring # 4 @	ID		
The Information Stated Herein Is Correct				Customer Representative Signature					



The Road to Excellence Starts with Safety

Sold To #: 300721	Ship To #: 2986866	Quote #:	Sales Order #: 900238756
Customer: WPX ENERGY ROCKY MOUNTAIN LLC-EBUS		Customer Rep: Hartl, Al	
Well Name: RWF	Well #: 43-36	API/UWI #:	
Field: RULISON	City (SAP): RIFLE	County/Parish: Garfield	State: Colorado
<b>Legal Description:</b>			
Lat: N 39.482 deg. OR N 39 deg. 28 min. 56.644 secs.		Long: W 107.836 deg. OR W -108 deg. 9 min. 50.85 secs.	
Contractor: NABORS 576		Rig/Platform Name/Num: NABORS 576	
Job Purpose: Cement Surface Casing			Ticket Amount:
Well Type: Development Well		Job Type: Cement Surface Casing	
Sales Person: MAYO, MARK		Srv Supervisor: KUKUS, CHRISTOPHER	MBU ID Emp #: 413952

Activity Description	Date/Time	Cht #	Rate bbl/min	Volume bbl		Pressure psig		Comments
				Stage	Total	Tubing	Casing	
Call Out	03/15/2013 01:00							ELITE # 9
Depart Yard Safety Meeting	03/15/2013 04:30							ALL HES EMPLOYEES
Arrive At Loc	03/15/2013 05:30							RIG RUNNING CASING HES CREW ARRIVED ON TIME AND WAS ASKED TO SPOT EQUIPMENT AND RIG UP PER CO REP REQUEST THE TIMES ON THE CEMENT CHART ARE WRONG THE JOB LOG TIMES ARE RIGHT
Assessment Of Location Safety Meeting	03/15/2013 05:40							ALL HES EMPLOYEES
Pre-Rig Up Safety Meeting	03/15/2013 05:50							ALL HES EMPLOYEES
Rig-Up Equipment	03/15/2013 06:00							1 F-550 PICKUP 1 HT- 400 PUMP TRUCK 1 660 BULK TRUCK IRON TO STAND PIPE, SUCTION HOSE TO FRESH WATER SUPPLY, BULK HOSE TO BULK TRUCK
Pre-Job Safety Meeting	03/15/2013 07:50							ALL HES EMPLOYEES AND RIG CREW
Activity Description	Date/Time	Cht #	Rate bbl/min	Volume bbl		Pressure psig		Comments
				Stage	Total	Tubing	Casing	

Start Job	03/15/2013 08:08								TD: 1140 TP: 1122.28 SJ: 43.87 CSG: 9 5/8 32.3# OH: 13 1/2 MUD WT 10 VISC: 100 RIG GOING TO CIRCULATE FOR 1 HOUR BEFORE CEMENT JOB
Test Lines	03/15/2013 08:11					4593. 0			PRESSURE TEST OK
Pump Spacer	03/15/2013 08:17		4	20	20		132.0		FRESH WATER SPACER
Pump Lead Cement	03/15/2013 08:24		7	67.8	67.8		310.0		160 SKS 12.3 PPG 2.38 YEILD 13.75 GAL / SK LEAD CEMENT WEIGHT VERIFIED VIA MUD SCALES THROUGH OUT LEAD CEMENT
Pump Tail Cement	03/15/2013 08:34		7	60.1	60.1		330.0		160 SKS 12.8 PPG 2.11 YEILD 11.75 GAL / SK TAIL CEMENT WEIGHT VERIFIED VIA MUD SCALES THROUGH OUT TAIL CEMENT
Shutdown	03/15/2013 08:42								SHUTDOWN END CEMENT WASH TUB READY FOR DISPLACEMENT
Drop Plug	03/15/2013 08:45								PLUG AWAY NO PROBLEMS
Pump Displacement	03/15/2013 08:46		10	74.9	74.9		660.0		FRESH WATER DISPLACEMENT HES WASHED UP ON TOP PLUG PER CO-REP REQUEST
Slow Rate	03/15/2013 08:55		2	10	10		254.0		SLOW RATE TO BUMP PLUG
Bump Plug	03/15/2013 08:58		2	84.9	84.9		275.0		BUMP PLUG @ 275 AND TOOK PRESSURE UP TO 844 PSI
Check Floats	03/15/2013 08:59								FLOATS HELD .5 BBL BACK TO DISPLACEMENT TANKS
Activity Description	Date/Time	Cht #	Rate bbl/ min	Volume bbl		Pressure psig		Comments	
				Stage	Total	Tubing	Casing		

# HALLIBURTON

## Cementing Job Log

End Job	03/15/2013 09:00							WELL HAD GOOD CIRCULATION THROUGH OUT CEMENT JOB GOT 24 BBLS OF CEMENT TO SURFACE RIG USED 20 LBS OF SUGAR TICKET CHANGES: TOOK ADD HOURS, DERRICK CHARGE, SUGAR TO 20LBS, NO SWEAGE CHARGE
Pre-Rig Down Safety Meeting	03/15/2013 09:20							ALL HES EMPLOYEES
Rig-Down Equipment	03/15/2013 09:30							RIG FLOOR, IRON, SUCTION HOSE, BULK HOSE, WASH AND BLOW DOWN PUMP TRUCK
Pre-Convoy Safety Meeting	03/15/2013 10:20							ALL HES EMPLOYEES
Crew Leave Location	03/15/2013 10:30							THANKS FOR USING HALLIBURTON CEMENT CHRIS KUKUS AND CREW

Sold To # : 300721

Ship To # : 2986866

Quote # :

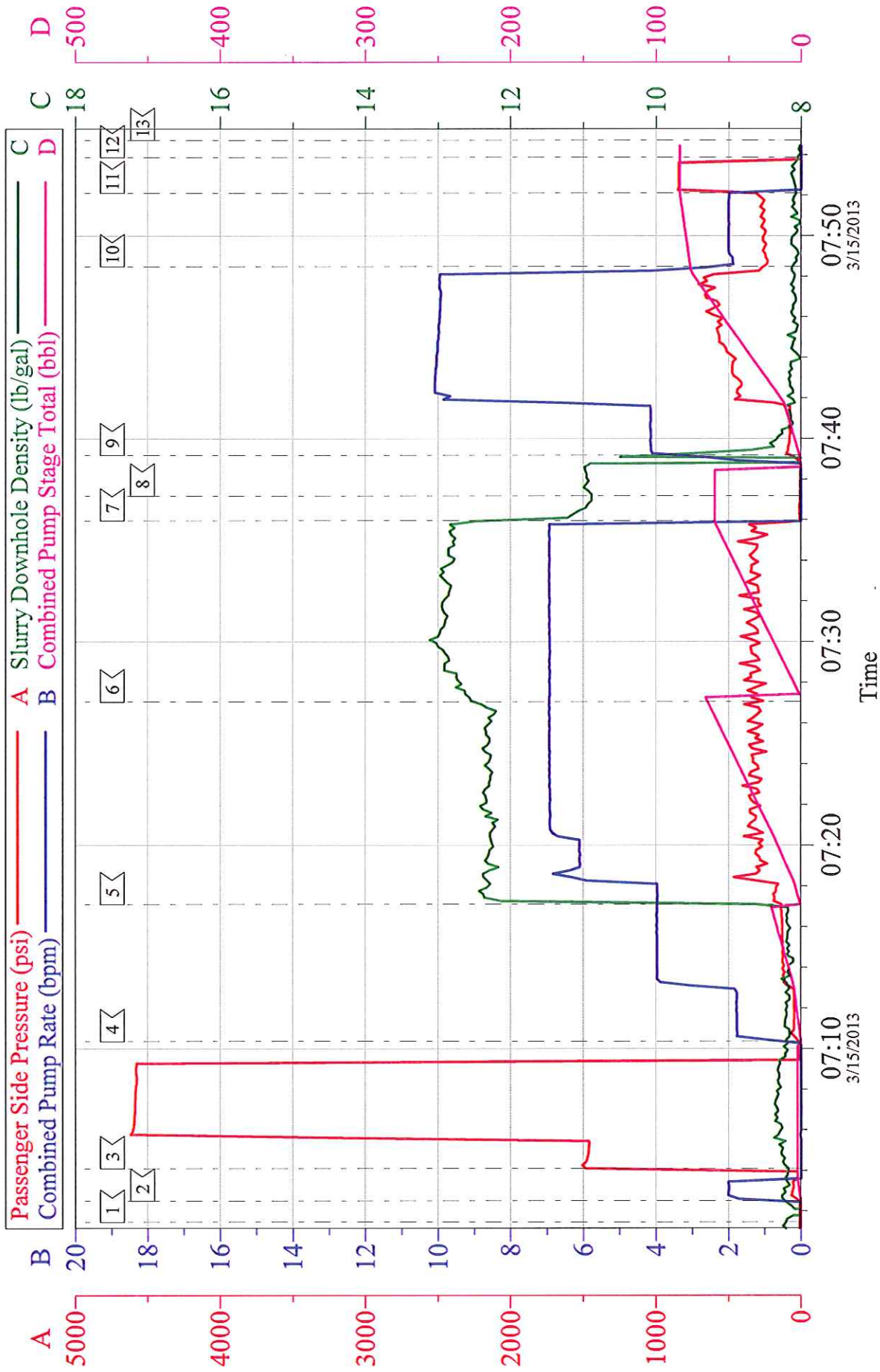
Sales Order # : 900238756

SUMMIT Version: 7.3.0078

Tuesday, March 19, 2013 02:45:00



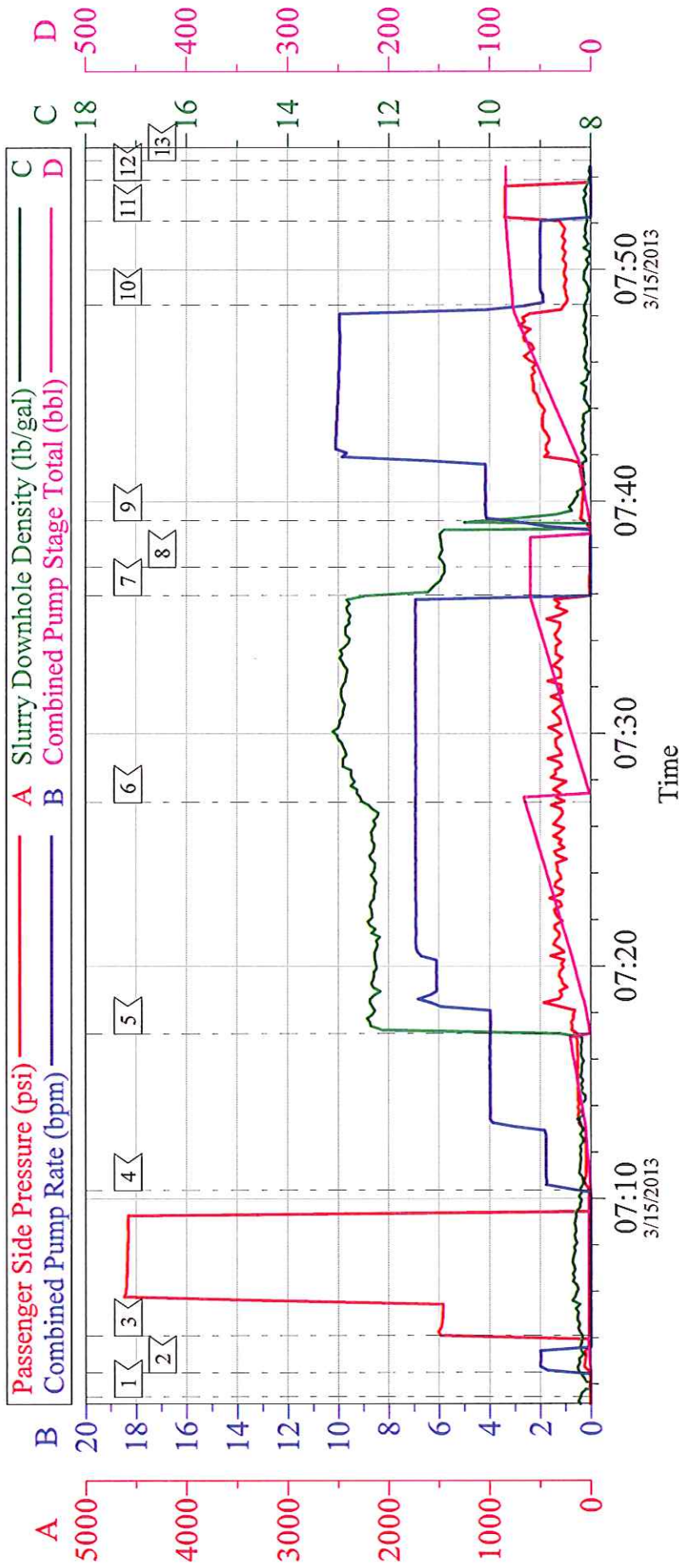
# WPX ENERGY / RWF 43-23 9 5/8 SURFACE



Customer: WPX ENERGY	Job Date: 15-Mar-2013	Sales Order #: 06:56:56
Well Description: RWF 43-23	Job Type: SURFACE	ADC Used: YES
Company Rep: AL HARTL	Cement Supervisor: CHRIS KUKUS	Elite # 9: WESLY GOWEN

# WPX ENERGY / RWF 43-23

## 9 5/8 SURFACE



Local Event Log	
1	FILL LINES
2	START JOB
3	TEST LINES
4	PUMP FRESH WATER SPACER
5	PUMP LEAD CEMENT
6	PUMP TAIL CEMENT
7	SHUTDOWN
8	DROP PLUG
9	PUMP FRESH WATER DISPLACEMENT
10	SLOW RATE
11	BUMP PLUG
12	CHECK FLOATS
13	END JOB

Customer:	WPX ENERGY	Job Date:	15-Mar-2013	Sales Order #:	06:56:56
Well Description:	RWF 43-23	Job Type:	SURFACE	ADC Used:	YES
Company Rep:	AL HARTL	Cement Supervisor:	CHRIS KUKUS	Elite # 9:	WESLY GOWEN