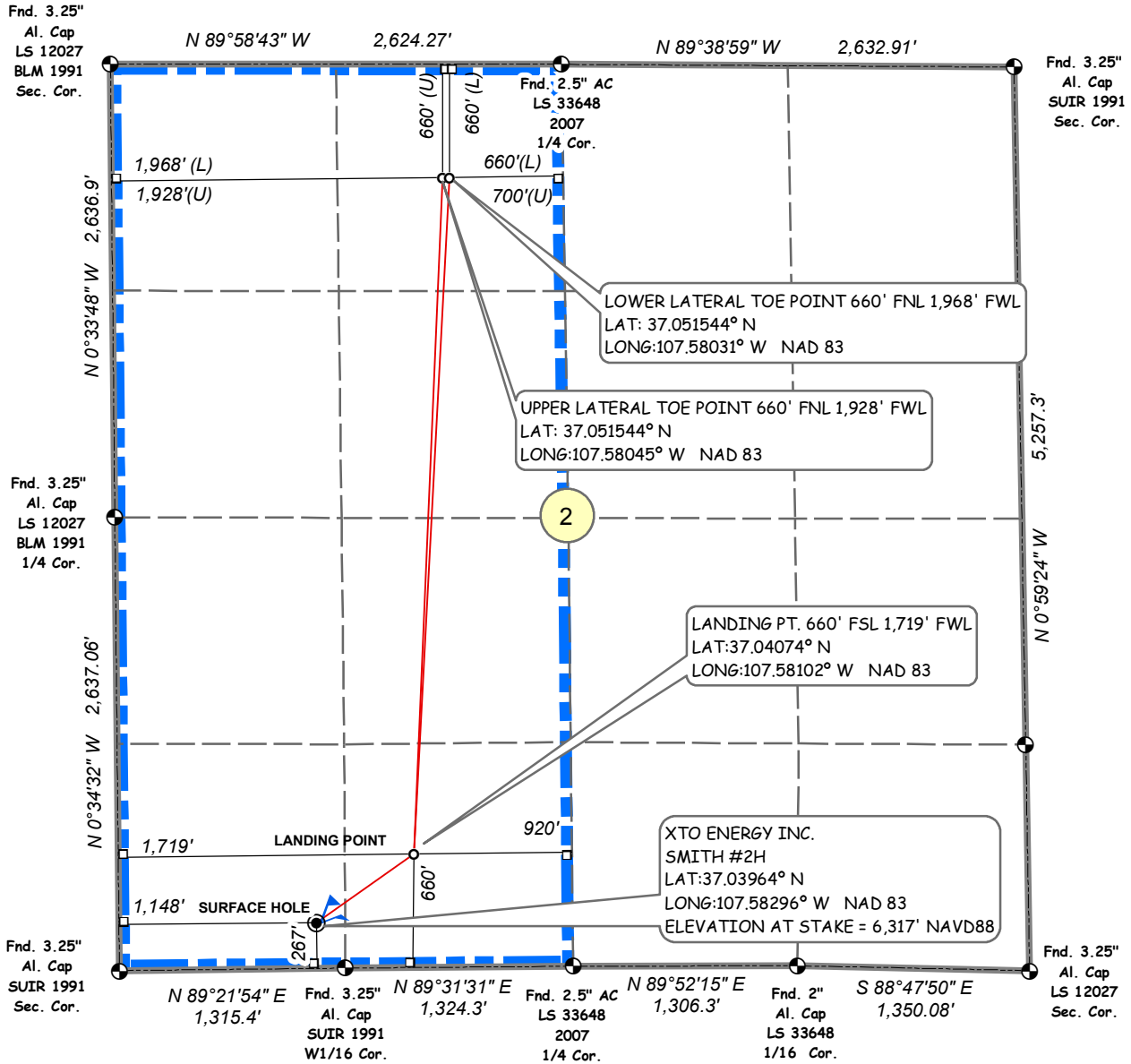


**XTO ENERGY INC.
SMITH #2H**

**SURFACE HOLE: 267' FSL, 1,148' FWL
SECTION 2, T-32-N, R-07-W, N.M.P.M.,
LA PLATA COUNTY, COLORADO
LAT:37.03964° N LONG:107.58296° W NAD 83
ELEVATION AT STAKE = 6,317' NAVD88**

LAT: 37°02.3784' N
LONG: 107°34.9410' W
NAD27

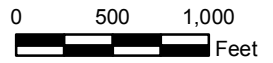
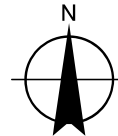
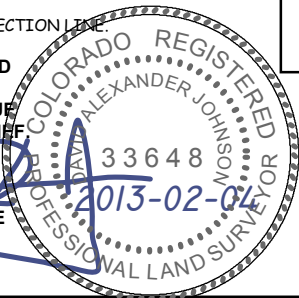


NOTES:

1. SURFACE USE IS GRAZING AND AGRICULTURAL.
2. SEE ATTACHED ADDENDUM FOR IMPROVEMENTS, AND PROPERTY LINES WITHIN 200' OF BORE.
3. DATE OF SURVEY 4/9/2012
4. BASIS OF ELEVATION = NAVD88 AS PREDICTED BY GEOID03.
5. GPS POSITIONS COLLECTED AT PDOP VALUE OF 6 OR LESS.
6. LOCATION OFFSETS TO SECTION LINE MEASURED AT 90° TO SECTION LINE.

THIS IS TO CERTIFY THAT THE ABOVE PLAT WAS PREPARED FROM FIELD NOTES OF ACTUAL SURVEYS MADE BY ME OR UNDER MY DIRECT SUPERVISION AND THAT SAME ARE TRUE AND CORRECT TO THE BEST OF MY KNOWLEDGE AND BELIEF

DAVID ALEXANDER JOHNSON LICENSE NO. 33648 DATE 2013-02-04
STATE OF COLORADO



1 inch equals 1,000 feet

Legend

- DRILL PATH NODE
- OFFSET DIMENSION
- WF SMITH 2H
- LEASE_AREA
- SECTION
- QUARTER; SIXTEENTH
- DRILL PATH

SMITH2H.SD.MXD 2013_01_31

JMAS
JOHNSON MAPPING AND SURVEYING, LLC
PO BOX 2174
FARMINGTON NM 87499-2174
505-360-8029
ALEX@JOHNSONMAPPING.BIZ