

*The Road to Excellence Starts with Safety*

Sold To #: 300721	Ship To #: 300721	Quote #:	Sales Order #: 900347225
Customer: WPX ENERGY ROCKY MOUNTAIN LLC-EBUS	Customer Rep: Towers, Ron		
Well Name: RWF	Well #: 313-29	API/UWI #: 05-045-21664	
Field: RULISON	City (SAP): TULSA	County/Parish: Garfield	State: Colorado
Lat: N 39.49 deg. OR N 39 deg. 29 min. 24.63 secs.	Long: W 107.919 deg. OR W -108 deg. 4 min. 52.709 secs.		
Contractor: NABORS 577	Rig/Platform Name/Num: NABORS 577		
Job Purpose: Cement Surface Casing			
Well Type: Development Well	Job Type: Cement Surface Casing		
Sales Person: MAYO, MARK	Srvc Supervisor: ARNOLD, EDWARD	MBU ID Emp #: 439784	

**Job Personnel**

HES Emp Name	Exp Hrs	Emp #	HES Emp Name	Exp Hrs	Emp #	HES Emp Name	Exp Hrs	Emp #
ARNOLD, EDWARD John	10.5	439784	KEANE, JOHN Donovon	10.5	486519	SIMINEO, JEROD M	10.5	479954

**Equipment**

HES Unit #	Distance-1 way	HES Unit #	Distance-1 way	HES Unit #	Distance-1 way	HES Unit #	Distance-1 way
10744549	60 mile	10872429	60 mile	10995027	60 mile	11259882	60 mile
11808847	60 mile						

**Job Hours**

Date	On Location Hours	Operating Hours	Date	On Location Hours	Operating Hours	Date	On Location Hours	Operating Hours
4-9-2013	2.5	0	4-10-2013	8	3			

<b>TOTAL</b>	Total is the sum of each column separately							
--------------	--	--	--	--	--	--	--	--

**Job**

Formation Name	Formation Depth (MD)	Top	Bottom	Job Type	Job depth MD	Job Depth TVD	Water Depth	Perforation Depth (MD)	From	To
				BHST	1135. ft	1135. ft				
							Wk Ht Above Floor			3. ft

**Well Data**

Description	New / Used	Max pressure psig	Size in	ID in	Weight lbm/ft	Thread	Grade	Top MD ft	Bottom MD ft	Top TVD ft	Bottom TVD ft
-------------	------------	-------------------	---------	-------	---------------	--------	-------	-----------	--------------	------------	---------------

**Sales/Rental/3<sup>rd</sup> Party (HES)**

Description	Qty	Qty uom	Depth	Supplier
PLUG,CMTG,TOP,9 5/8,HWE,8.16 MIN/9.06 MA	1	EA		

**Tools and Accessories**

Type	Size	Qty	Make	Depth	Type	Size	Qty	Make	Depth	Type	Size	Qty	Make
Guide Shoe					Packer					Top Plug	95/8"	1	HES
Float Shoe					Bridge Plug					Bottom Plug			
Float Collar					Retainer					SSR plug set			
Insert Float										Plug Container	9 5/8"	1	HES
Stage Tool										Centralizers			

**Miscellaneous Materials**

Gelling Agt	Conc	Surfactant	Conc	Acid Type	Qty	Conc	%
Treatment Fld	Conc	Inhibitor	Conc	Sand Type	Size	Qty	

**Fluid Data**

Stage/Plug #: 1	Fluid #	Stage Type	Fluid Name	Qty	Qty uom	Mixing Density lbm/gal	Yield ft <sup>3</sup> /sk	Mix Fluid Gal/sk	Rate bbl/min	Total Mix Fluid Gal/sk
-----------------	---------	------------	------------	-----	---------	------------------------	---------------------------	------------------	--------------	------------------------

Stage/Plug #: 1

Stage/Plug #: 1									
Fluid #	Stage Type	Fluid Name	Qty	Qty uom	Mixing Density lbm/gal	Yield ft <sup>3</sup> /sk	Mix Fluid Gal/sk	Rate bbl/min	Total Mix Fluid Gal/sk
1	Fresh Water Spacer		20.00	bbl	.	.0	.0	4	
2	VersaCem GJ1 Lead Cement	VERSACEM (TM) SYSTEM (452010)	160.0	sacks	12.3	2.38	13.75	7	13.75
		13.75 Gal FRESH WATER							
3	VersaCem GJ1 Tail Cement	VERSACEM (TM) SYSTEM (452010)	160.0	sacks	12.8	2.11	11.75	7	11.75
		11.75 Gal FRESH WATER							
4	Fresh Water Displacement		85.00	bbl	.	.0	.0	10	
Calculated Values		Pressures		Volumes					
Displacement	84.9	Shut In: Instant		Lost Returns		Cement Slurry	127.9	Pad	
Top Of Cement	SURFACE	5 Min		Cement Returns	32	Actual Displacement	84.9	Treatment	
Frac Gradient		15 Min		Spacers	20	Load and Breakdown		Total Job	232.8
Rates									
Circulating	RIG	Mixing	7	Displacement	10	8			
Cement Left In Pipe	Amount	44 ft	Reason	Shoe Joint					
Frac Ring # 1 @	ID	Frac ring # 2 @	ID	Frac Ring # 3 @	ID	Frac Ring # 4 @	ID		
The Information Stated Herein Is Correct				Customer Representative Signature					



*The Road to Excellence Starts with Safety*

Sold To #: 300721	Ship To #: 300721	Quote #:	Sales Order #: 900347225
Customer: WPX ENERGY ROCKY MOUNTAIN LLC-EBUS	Customer Rep: Towers, Ron		
Well Name: RWF	Well #: 313-29	API/UWI #: 05-045-21664	
Field: RULISON	City (SAP): TULSA	County/Parish: Garfield	State: Colorado
Legal Description:			
Lat: N 39.49 deg. OR N 39 deg. 29 min. 24.63 secs.		Long: W 107.919 deg. OR W -108 deg. 4 min. 52.709 secs.	
Contractor: NABORS 577	Rig/Platform Name/Num: NABORS 577		
Job Purpose: Cement Surface Casing	Ticket Amount:		
Well Type: Development Well	Job Type: Cement Surface Casing		
Sales Person: MAYO, MARK	Srv Supervisor: ARNOLD, EDWARD	MBU ID Emp #: 439784	

Activity Description	Date/Time	Cht #	Rate bbl/min	Volume bbl		Pressure psig		Comments
				Stage	Total	Tubing	Casing	
Call Out	04/09/2013 18:00							Crew called out.
Pre-Convoy Safety Meeting	04/09/2013 19:45							Including entire cement crew, discuss hazards, route, and safety.
Crew Leave Yard	04/09/2013 20:00							Leave yard for location.
Arrive At Loc	04/09/2013 21:30							Requested on location at 22:00. Rig still pulling drill pipe.
Assessment Of Location Safety Meeting	04/10/2013 04:00							Including entire cement crew, discussed hazards, and rig up.
Pre-Rig Up Safety Meeting	04/10/2013 04:10							
Rig-Up Equipment	04/10/2013 04:15							1 Elite # ; 1 660 Bulk Truck; 1 hard line to rig floor; 1 line to rig tank; 1 line to upright; 1 9 5/8" compact head.
Rig-Up Completed	04/10/2013 05:10							
Pre-Job Safety Meeting	04/10/2013 05:30							Including everyone on location. Discussed hazards, emergency situations, and job procedure.
Start Job	04/10/2013 05:39							TD 1135; TP 1123; SJ 44; OH 13 1/2"; CASING 9 5/8" 32.3# H-40; MUD 10.4 PPG.
Pump Water	04/10/2013 05:40		2	2			92.0	Fresh water ahead to fill lines.
Test Lines	04/10/2013 05:42					4190.0		Test line to psi, Found no leaks, good test.

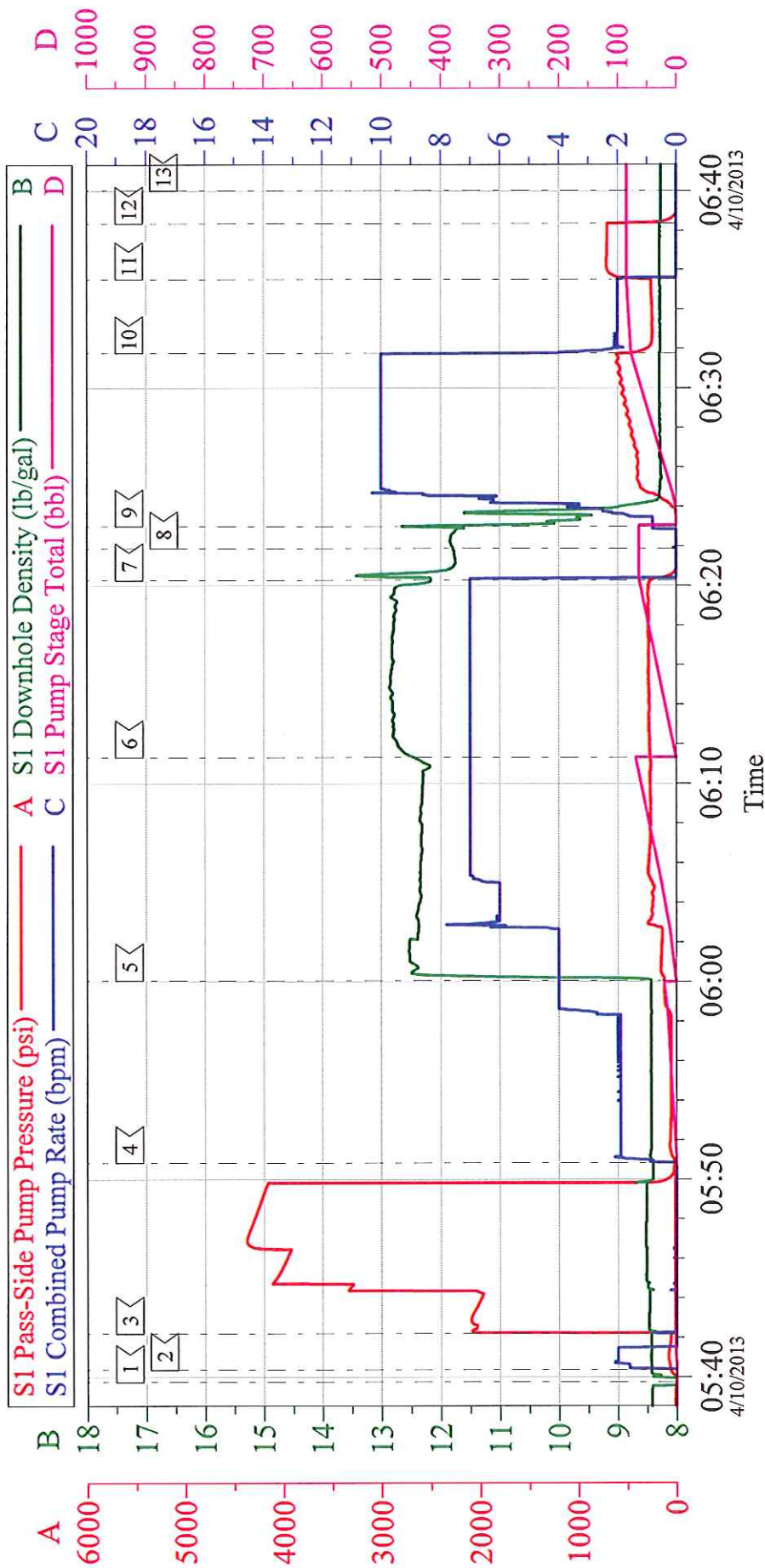
## Cementing Job Log

Activity Description	Date/Time	Cht #	Rate bbl/min	Volume bbl		Pressure psig		Comments
				Stage	Total	Tubing	Casing	
Pump Spacer 1	04/10/2013 05:50		4	20			119.0	20 BBL's fresh water.
Pump Lead Cement	04/10/2013 06:00		7	67.8			268.0	160 sks Lead cement, 12.3 ppg, 2.38 cf3, 13.75 gal/sk.
Pump Tail Cement	04/10/2013 06:11		7	60.1			282.0	160 sks Tail cement, 12.8 ppg, 2.11 cf3, 11.75 gal/sk.
Shutdown	04/10/2013 06:20							
Drop Plug	04/10/2013 06:21							Plug left Container.
Pump Displacement	04/10/2013 06:23		10	75.9			615.0	Fresh water displacement.
Slow Rate	04/10/2013 06:31		2	10			260.0	Slow rate last 10 BBL's of displacement prior to bumping the plug.
Bump Plug	04/10/2013 06:35				85.9		709.0	Plug landed. Took to psi.
Check Floats	04/10/2013 06:38							Floats Held. BBL's back. 32 BBL's of good cement to surface.
Pre-Rig Down Safety Meeting	04/10/2013 06:40							Including entire cement crew, discussed hazards and safety.
Rig-Down Equipment	04/10/2013 06:45							
Pre-Convoy Safety Meeting	04/10/2013 07:45							Including entire cement crew, discussed hazards, route, and safety.
Crew Leave Location	04/10/2013 08:00							
Other	04/10/2013 08:00							Thank You for using Halliburton, Ed Arnold and Crew.



# WPX - RWF 313-29

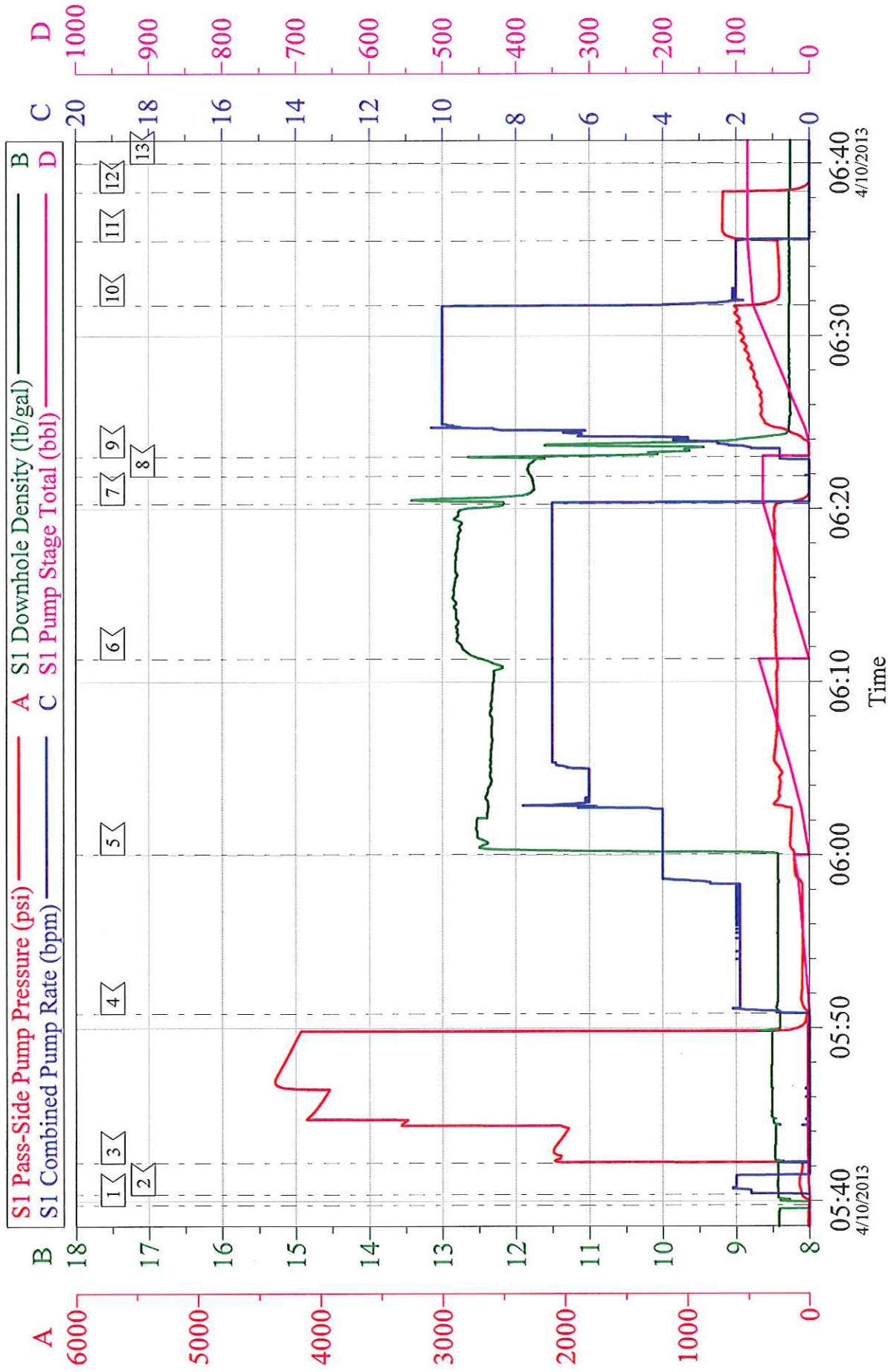
9 5/8" SURFACE



Customer: WPX	Job Date: 10-Apr-2013	Sales Order #: 900347225
Well Description: RWF 313-29	Job Type: SURFACE	ADC Used: YES
Company Rep: RON TOWERS	Cement Supervisor: ED ARNOLD	Elite #7: JEROD SIMINEO

# WPX - RWF 313-29

9 5/8" SURFACE



Customer: WPX	Job Date: 10-Apr-2013	Sales Order #: 900347225
Well Description: RWF 313-29	Job Type: SURFACE	ADC Used: YES
Company Rep: RON TOWERS	Cement Supervisor: ED ARNOLD	Elite #: JEROD SIMINEO